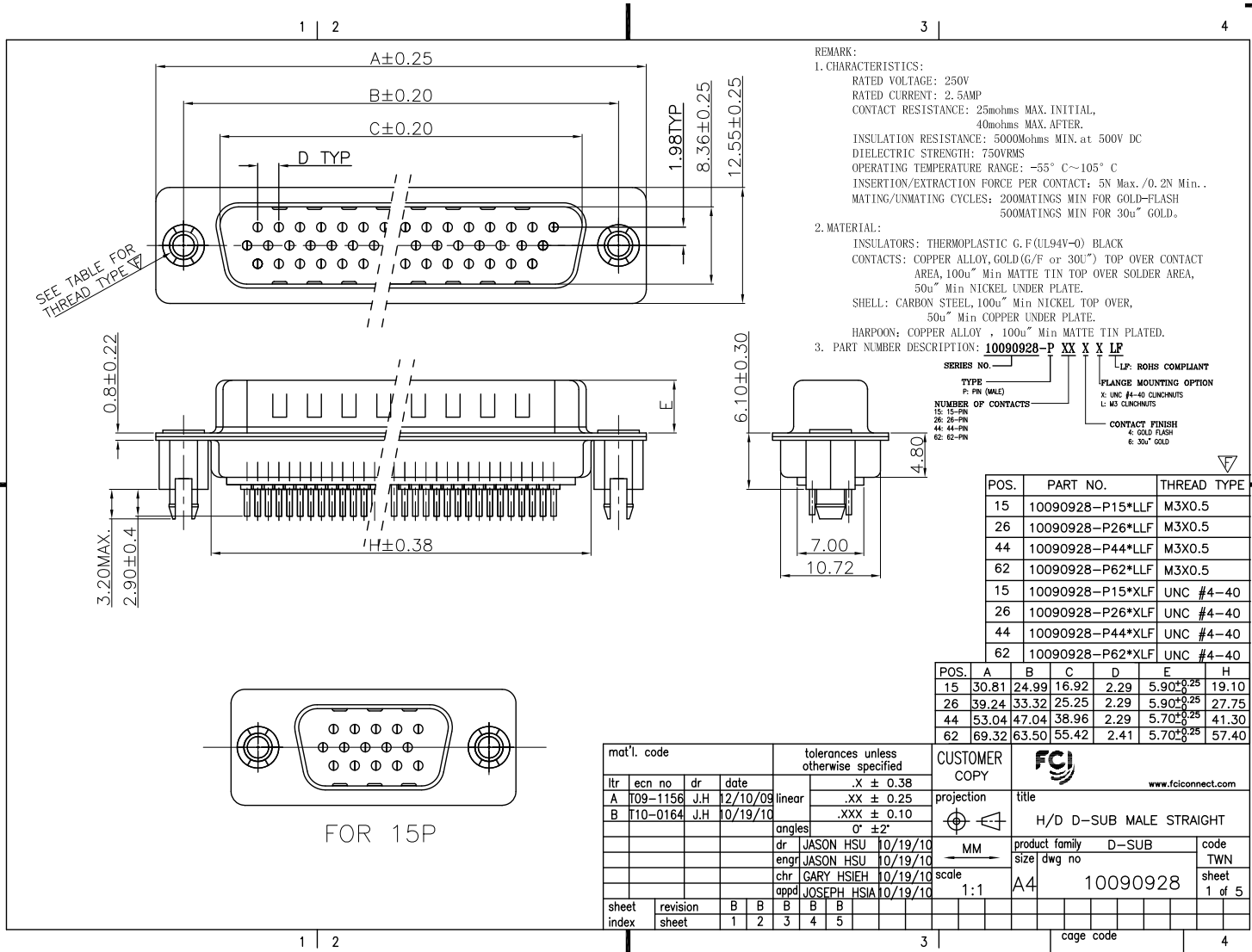


Tous droits strictement réservés. Reproduction ou communication a des tiers interdite sous quelque forme que ce soit sans autorisation écrite du propriétaire. Property of FCJ. Droits de reproduction FCJ.



All rights strictly reserved. Reproduction or issue to third parties in any form whatever is not permitted without written authority from the proprietor. Property of FCJ. Copyright FCJ.



REMARK:
 1. CHARACTERISTICS:
 RATED VOLTAGE: 250V
 RATED CURRENT: 2.5AMP
 CONTACT RESISTANCE: 25mohms MAX. INITIAL, 40mohms MAX. AFTER.
 INSULATION RESISTANCE: 5000Mohms MIN. at 500V DC
 DIELECTRIC STRENGTH: 750VRMS
 OPERATING TEMPERATURE RANGE: -55° C~105° C
 INSERTION/EXTRACTION FORCE PER CONTACT: 5N Max./0.2N Min.
 MATING/UNMATING CYCLES: 200MATINGS MIN FOR GOLD-FLASH 500MATINGS MIN FOR 30u" GOLD.
 2. MATERIAL:
 INSULATORS: THERMOPLASTIC G.F(UL94V-0) BLACK
 CONTACTS: COPPER ALLOY, GOLD(G/F or 30u") TOP OVER CONTACT AREA, 100u" Min MATTE TIN TOP OVER SOLDER AREA, 50u" Min NICKEL UNDER PLATE.
 SHELL: CARBON STEEL, 100u" Min NICKEL TOP OVER, 50u" Min COPPER UNDER PLATE.
 HARPOON: COPPER ALLOY, 100u" Min MATTE TIN PLATED.
 3. PART NUMBER DESCRIPTION: **10090928-P XX X X LF**

SERIES NO. LP: ROHS COMPLIANT
 TYPE P: FN (MALE)
 NUMBER OF CONTACTS X: UNC #4-40 CLINCHMUT L: M3 CLINCHMUT
 CONTACT FINISH 4: GOLD FLASH 5: 30U" GOLD

POS.	PART NO.	THREAD TYPE
15	10090928-P15*LLF	M3X0.5
26	10090928-P26*LLF	M3X0.5
44	10090928-P44*LLF	M3X0.5
62	10090928-P62*LLF	M3X0.5
15	10090928-P15*XLF	UNC #4-40
26	10090928-P26*XLF	UNC #4-40
44	10090928-P44*XLF	UNC #4-40
62	10090928-P62*XLF	UNC #4-40

POS.	A	B	C	D	E	H
15	30.81	24.99	16.92	2.29	5.90 ^{+0.25}	19.10
26	39.24	33.32	25.25	2.29	5.90 ^{+0.25}	27.75
44	53.04	47.04	38.96	2.29	5.70 ^{+0.25}	41.30
62	69.32	63.50	55.42	2.41	5.70 ^{+0.25}	57.40

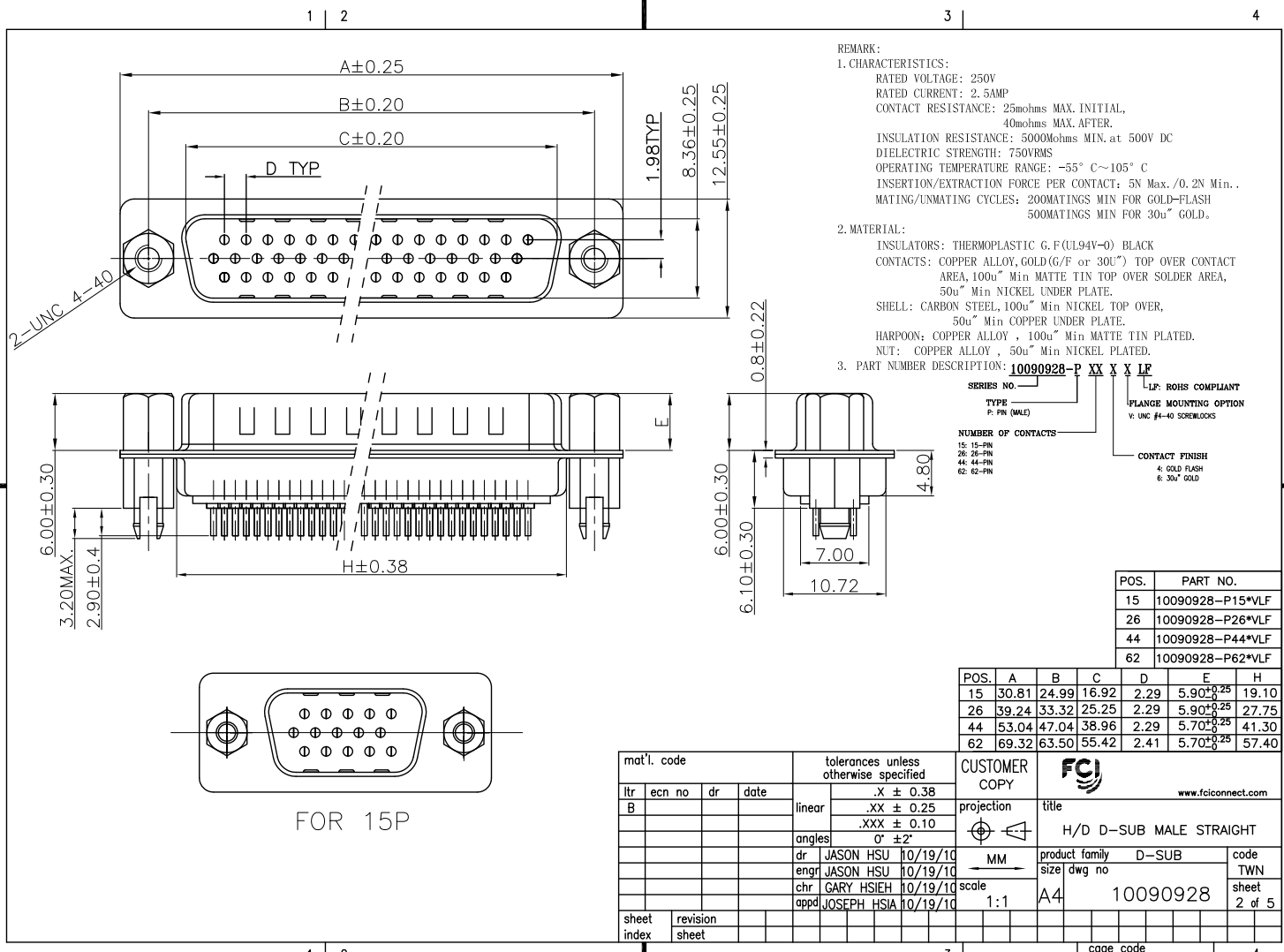
mat'l. code				tolerances unless otherwise specified			
lfr	ecn no	dr	date	linear	.X ± 0.38	projection	
A	T09-1156	J.H	12/10/09		.XX ± 0.25		
B	T10-0164	J.H	10/19/10	angles	.XXX ± 0.10		
				dr	0° ±2°		
				enrg	JASON HSU 10/19/10	MM	
				chr	JASON HSU 10/19/10	scale	
				appd	GARY HSIEH 10/19/10	1:1	
					JOSEPH HSIA 10/19/10		
sheet index	revision sheet	B	B	B	B	B	B
		1	2	3	4	5	

CUSTOMER COPY		FCJ	
title	H/D D-SUB MALE STRAIGHT	product family	D-SUB
size	A4	dwg no	10090928
code		code	TWN
		sheet	1 of 5

Tous droits strictement réservés. Reproduction ou communication a des tiers interdite sous quelque forme que ce soit sans autorisation écrite du propriétaire. Propriété de c. FCI. Droits de reproduction FCI.



All rights strictly reserved. Reproduction or issue to third parties in any form whatever is not permitted without written authority from the proprietor. Property of FCI. Copyright FCI.

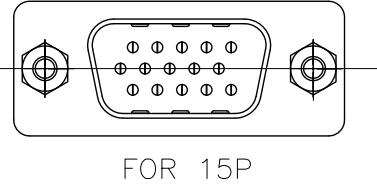


REMARK:
 1. CHARACTERISTICS:
 RATED VOLTAGE: 250V
 RATED CURRENT: 2.5AMP
 CONTACT RESISTANCE: 25mohms MAX. INITIAL, 40mohms MAX. AFTER.
 INSULATION RESISTANCE: 5000mohms MIN. at 500V DC
 DIELECTRIC STRENGTH: 750VRMS
 OPERATING TEMPERATURE RANGE: -55° C~105° C
 INSERTION/EXTRACTION FORCE PER CONTACT: 5N Max./0.2N Min.
 MATING/UNMATING CYCLES: 200MATINGS MIN FOR GOLD-FLASH 500MATINGS MIN FOR 30u" GOLD.
 2. MATERIAL:
 INSULATORS: THERMOPLASTIC G.F.(UL94V-0) BLACK
 CONTACTS: COPPER ALLOY, GOLD(G/F or 30u") TOP OVER CONTACT AREA, 100u" Min MATTE TIN TOP OVER SOLDER AREA, 50u" Min NICKEL UNDER PLATE.
 SHELL: CARBON STEEL, 100u" Min NICKEL TOP OVER, 50u" Min COPPER UNDER PLATE.
 HARPOON: COPPER ALLOY, 100u" Min MATTE TIN PLATED.
 NUT: COPPER ALLOY, 50u" Min NICKEL PLATED.
 3. PART NUMBER DESCRIPTION: **10090928-P XX X X LF**

SERIES NO. _____
 TYPE _____
 P: FN (MALE)
 NUMBER OF CONTACTS _____
 15: 15-PIN
 26: 26-PIN
 44: 44-PIN
 62: 62-PIN
 L.P. ROHS COMPLIANT
 FLANGE MOUNTING OPTION
 V: UNC #1-40 SOLDERLOCKS
 CONTACT FINISH
 4: GOLD FLASH
 8: 30u" GOLD

POS.	PART NO.
15	10090928-P15*VLF
26	10090928-P26*VLF
44	10090928-P44*VLF
62	10090928-P62*VLF

POS.	A	B	C	D	E	H
15	30.81	24.99	16.92	2.29	5.90 ^{+0.25}	19.10
26	39.24	33.32	25.25	2.29	5.90 ^{+0.25}	27.75
44	53.04	47.04	38.96	2.29	5.70 ^{+0.25}	41.30
62	69.32	63.50	55.42	2.41	5.70 ^{+0.25}	57.40

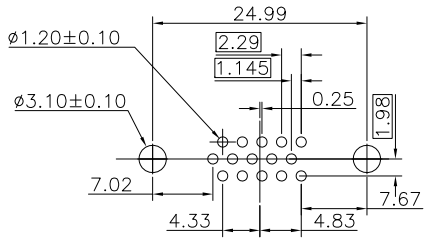


mat'l. code				tolerances unless otherwise specified				CUSTOMER COPY		FCI		www.fciconnect.com	
ltr	ecn no	dr	date	linear	.X ± 0.38	projection	title		product family	D-SUB	code	TWN	
B				angles	.XXX ± 0.10		H/D D-SUB MALE STRAIGHT						
				dr	0° ±2'	MM	size	D-SUB	code	TWN	sheet	2 of 5	
				enrg	JASON HSU 10/19/10	scale	1:1	A4	10090928				
				chr	GARY HSIEH 10/19/10								
				appd	JOSEPH HSIA 10/19/10								
sheet index	revision	sheet											

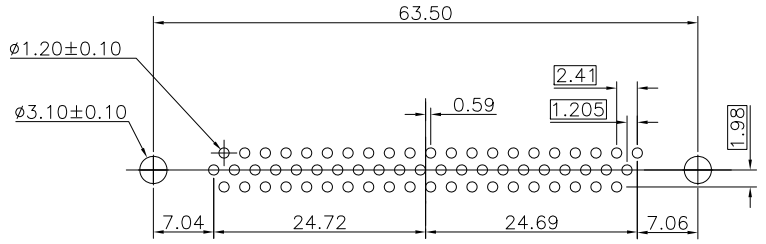
Tous droits strictement réservés. Reproduction ou communication à des tiers interdite sous quelque forme que ce soit sans autorisation écrite du propriétaire. Propriété de c. FCI. Droits de reproduction FCI.



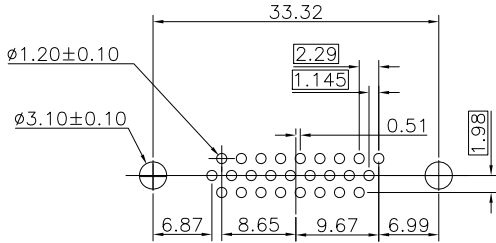
All rights strictly reserved. Reproduction or issue to third parties in any form whatever is not permitted without written authority from the proprietor. Property of FCI. Copyright FCI.



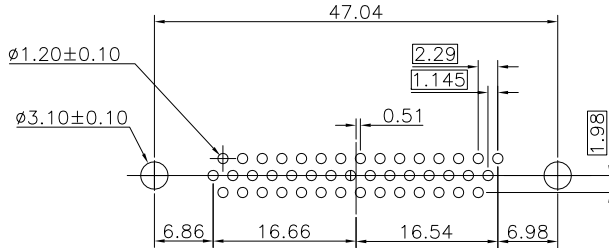
P.C.B LAYOUT(FOR 15P)



P.C.B LAYOUT(FOR 62P)



P.C.B LAYOUT(FOR 26P)



P.C.B LAYOUT(FOR 44P)

mat'l. code				tolerances unless otherwise specified			CUSTOMER COPY		FCI	
ltr	ecn no	dr	date	linear	.X ± 0.38	projection	title			
B					.XX ± 0.25		H/D D-SUB MALE STRAIGHT PCB			
				angles	.XXX ± 0.10		product family	D-SUB		code
				dr	0° ± 2°	MM	size		TWN	
				enrg	JASON HSU 10/19/10	scale	10090928		sheet	
				chr	JASON HSU 10/19/10	1:1	A4		3 of 5	
				appd	GARY HSIEH 10/19/10					
					JOSEPH HSIA 10/19/10					
sheet index	revision sheet						cage code			

ACAD

PDM: Rev:B

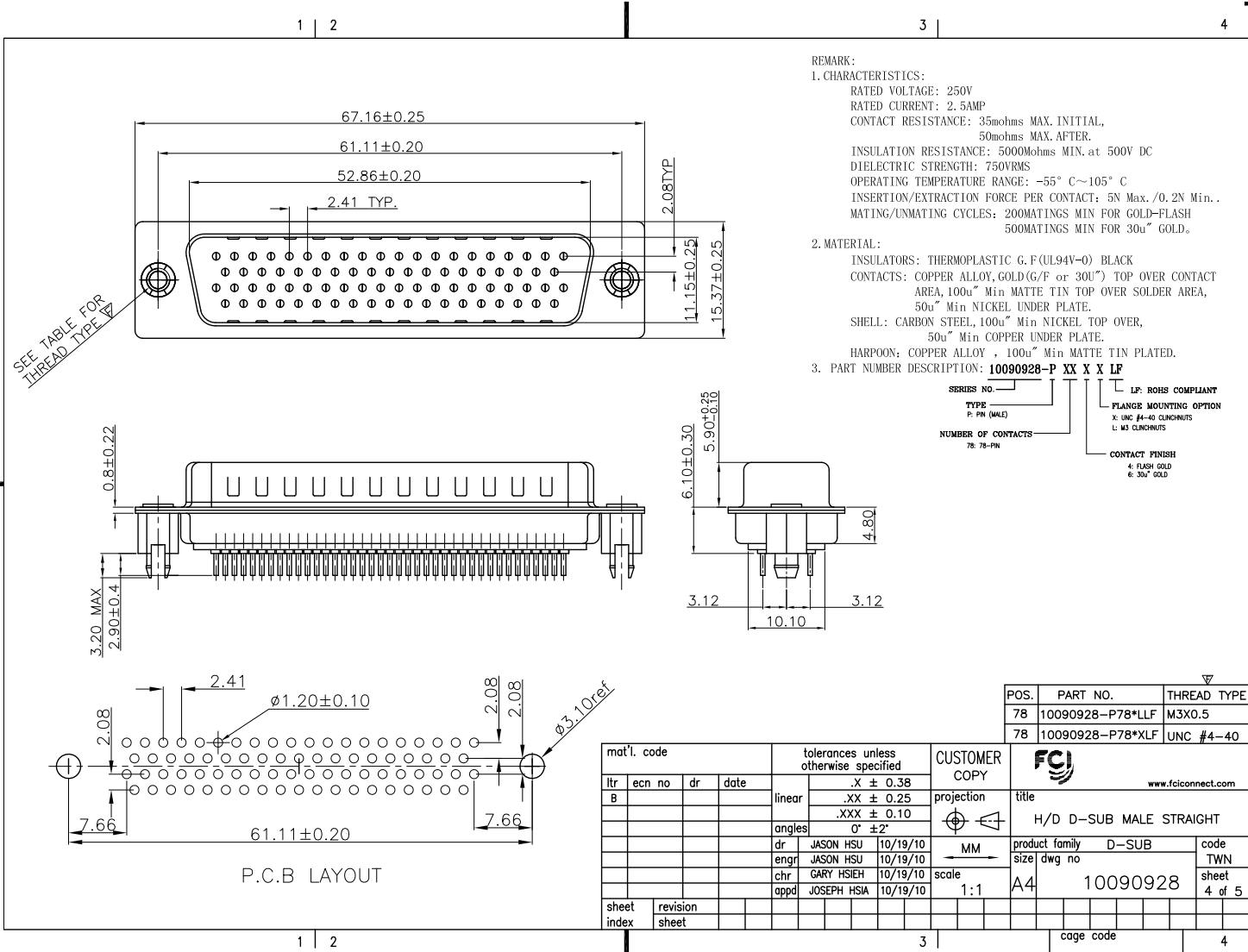
STATUS:Released

Printed: Nov 02, 2010

Tous droits strictement réservés. Reproduction ou communication à des tiers interdite sous quelque forme que ce soit sans autorisation écrite du propriétaire. Property of FCJ. Copyright FCJ. Droits de reproduction FCJ.



All rights strictly reserved. Reproduction or issue to third parties in any form whatever is not permitted without written authority from the proprietor. Property of FCJ. Copyright FCJ.



REMARK:
 1. CHARACTERISTICS:
 RATED VOLTAGE: 250V
 RATED CURRENT: 2.5AMP
 CONTACT RESISTANCE: 35mohms MAX. INITIAL, 50mohms MAX. AFTER.
 INSULATION RESISTANCE: 5000Mohms MIN. at 500V DC
 DIELECTRIC STRENGTH: 750VRMS
 OPERATING TEMPERATURE RANGE: -55° C~105° C
 INSERTION/EXTRACTION FORCE PER CONTACT: 5N Max. /0.2N Min.
 MATING/UNMATING CYCLES: 200MATINGS MIN FOR GOLD-FLASH 500MATINGS MIN FOR 30u" GOLD.

2. MATERIAL:
 INSULATORS: THERMOPLASTIC G.F.(UL94V-0) BLACK
 CONTACTS: COPPER ALLOY, GOLD(G/F or 30u") TOP OVER CONTACT AREA, 100u" Min MATTE TIN TOP OVER SOLDER AREA, 50u" Min NICKEL UNDER PLATE.
 SHELL: CARBON STEEL, 100u" Min NICKEL TOP OVER, 50u" Min COPPER UNDER PLATE.
 HARPOON: COPPER ALLOY, 100u" Min MATTE TIN PLATED.

3. PART NUMBER DESCRIPTION: **10090928-P XX X X LF**

SERIES NO.		LF: ROHS COMPLIANT
TYPE	P: PIN (MALE)	X: UNC #4-40 CLINCHNUTS
NUMBER OF CONTACTS	78: 78-PIN	L: M3 CLINCHNUTS
		C: CONTACT FINISH
		4: FLASH GOLD
		6: 30u" GOLD

POS.	PART NO.	THREAD TYPE
78	10090928-P78*LLF	M3X0.5
78	10090928-P78*XL	UNC #4-40

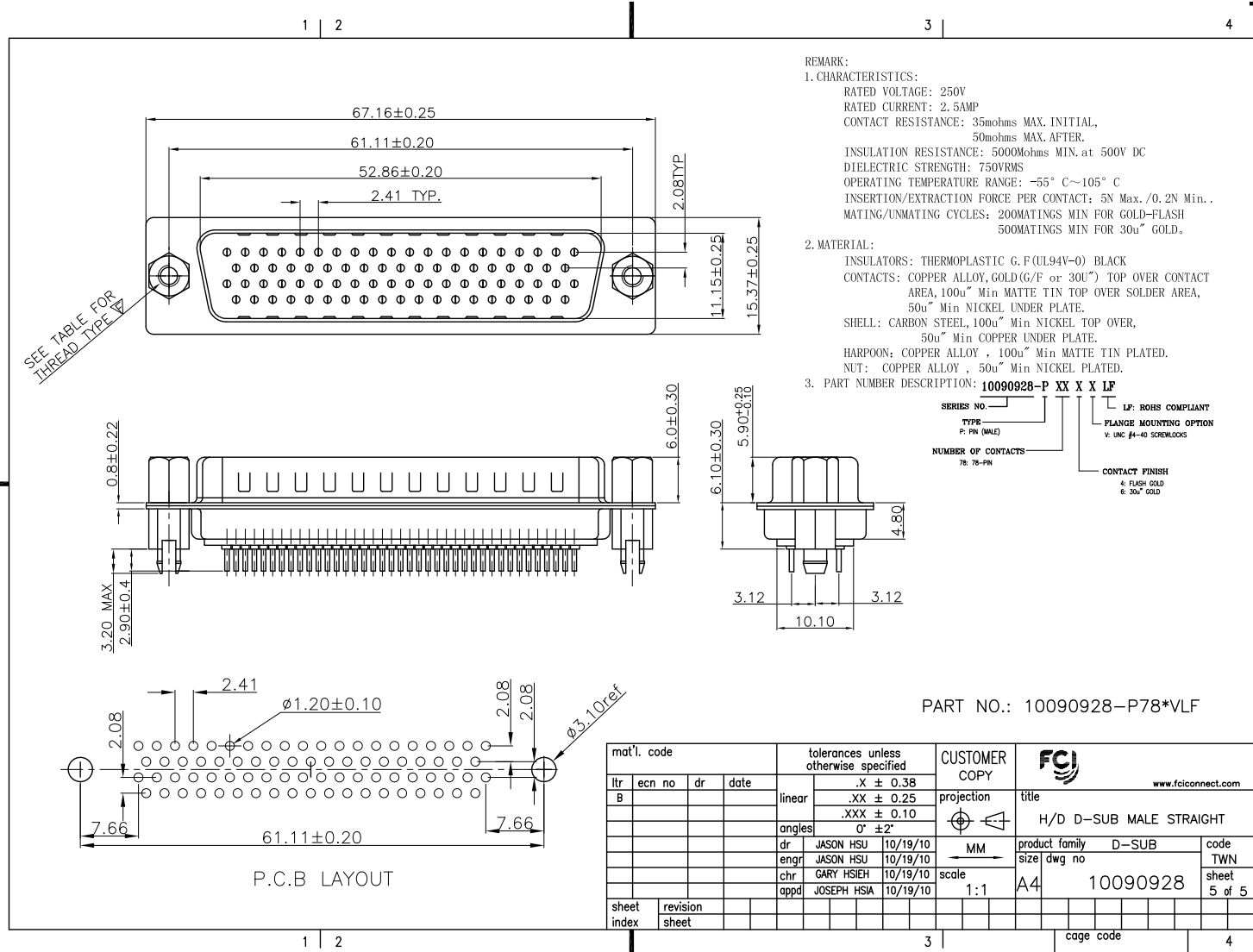
mat'l. code		tolerances unless otherwise specified		CUSTOMER COPY			
ltr	ecn no	dr	date	projection	title		
B							
		linear	.X ± 0.38	 MM	product family D-SUB		
			.XX ± 0.25			size A4	code TWN
		angles	.XXX ± 0.10				
		dr	0° ±2'	scale 1:1	10090928		
		enrg	JASON HSU 10/19/10				
		chr	JASON HSU 10/19/10				
		appd	GARY HSIEH 10/19/10				
			JOSEPH HSIA 10/19/10				
sheet index	revision sheet						

ACAD **PDM: Rev:B** STATUS:Released Printed: Nov 02, 2010

Tous droits strictement réservés. Reproduction ou communication a des tiers interdite sous quelque forme que ce soit sans autorisation écrite du propriétaire. Propriété de c. FCI. Droits de reproduction FCI.



All rights strictly reserved. Reproduction or issue to third parties in any form whatever is not permitted without written authority from the proprietor. Property of FCI. Copyright FCI.



mat'l. code				tolerances unless otherwise specified		CUSTOMER COPY		FCI	
ltr	ecn no	dr	date	linear	.X ± 0.38	projection	title	www.fciconnect.com	
B					.XX ± 0.25		H/D D-SUB MALE STRAIGHT	product family D-SUB	
				angles	.XXX ± 0.10			size	dwg no
				dr	0° ± 2'	MM	10090928	TWN	
				enrg		scale	A4	sheet	5 of 5
				chr	JASON HSU 10/19/10	1:1			
				appd	JASON HSU 10/19/10				
sheet index	revision								
	sheet								