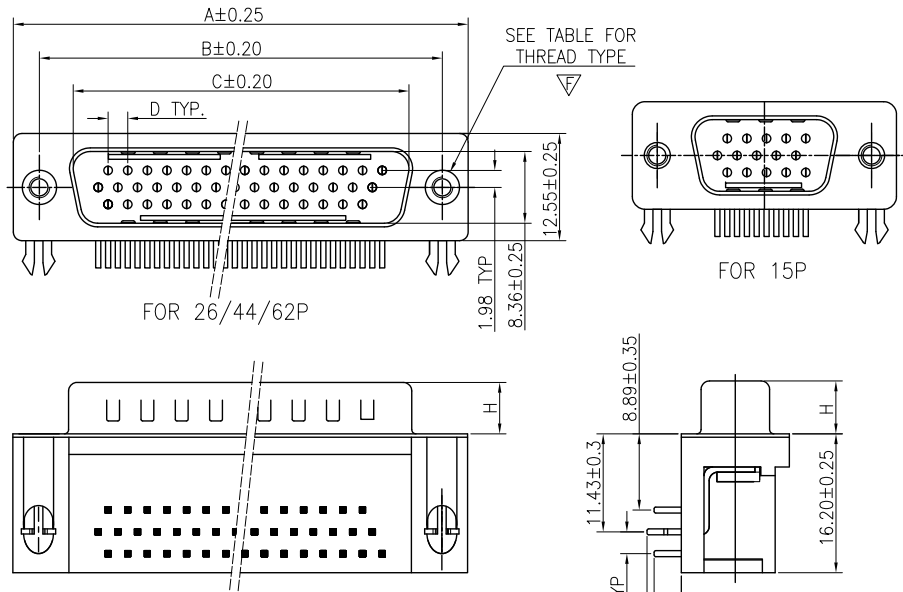


Tous droits strictement réservés. Reproduction ou communication à des tiers interdite sous quelque forme que ce soit sans autorisation écrite du propriétaire. Propriété de c FCI. Droits de reproduction FCI.



All rights strictly reserved. Reproduction or issue to third parties in any form whatever is not permitted without written authority from the proprietor. Property of FCI. Copyright FCI.



FOR 26/44/62P

FOR 15P

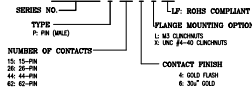
REMARK:

- CHARACTERISTICS:
  - RATED VOLTAGE: 250V
  - RATED CURRENT: 2.5AMP
  - CONTACT RESISTANCE: 25mohms MAX(40mohms MAX FOR AFTER TEST).
  - INSULATION RESISTANCE: 5000mohms MIN.at 500V DC
  - DIELECTRIC STRENGTH: 750V/RMS
  - OPERATING TEMPERATURE RANGE: -55° C-105° C
  - INSERTION/EXTRACTION FORCE PER CONTACT: 5N Max./0.2N Min.
  - MATING/UNMATING CYCLES: 200MATINGs MIN FOR GOLD-FLASH 500MATINGs MIN FOR 30u" GOLD.

2. MATERIAL:

- INSULATORS: THERMOPLASTIC G.F(UL94V-0) BLACK
- CONTACTS: COPPER ALLOY, GOLD(G/F or 30u") TOP OVER CONTACT AREA, 100u" Min MATTE TIN TOP OVER SOLDER AREA, 50u" Min NICKEL UNDER PLATE.
- SHELL: CARBON STEEL, 100u" Min NICKEL TOP OVER, 50u" Min COPPER UNDER PLATE.
- Z BRACKET: COPPER ALLOY, 100u" Min MATTE TIN PLATED.
- SCREW LOCK: COPPER ALLOY - 50u" Min NICKEL PLATED.

3. PART NUMBER DESCRIPTION: 10090926-P XX X X LP



POS.	PART NO.	THREAD TYPE
15P	10090926-P15*LLF	M3*0.5
26P	10090926-P26*LLF	M3*0.5
44P	10090926-P44*LLF	M3*0.5
62P	10090926-P62*LLF	M3*0.5
15P	10090926-P15*XLF	UNC #4-40
26P	10090926-P26*XLF	UNC #4-40
44P	10090926-P44*XLF	UNC #4-40
62P	10090926-P62*XLF	UNC #4-40

POS.	A	B	C	D	E	F	H
15P	30.81	24.99	16.92	2.29	8.19	7.68	5.90±0.25
26P	39.24	33.32	25.25	2.29	8.01	7.02	5.90±0.25
44P	53.04	47.04	38.96	2.29	8.02	7.01	5.70±0.25
62P	69.32	63.50	55.42	2.41	8.21	7.03	5.70±0.25

mat'l. code				tolerances unless otherwise specified		CUSTOMER COPY		FCI	
lfr	ecn no	dr	date	linear	.X ± 0.38	projection	title	www.fciconnect.com	
A	T09-1156	J.H	12/10/09		.XX ± 0.25		H/D D-SUB MALE RIGHT-ANGLE	product family	D-SUB
B	T10-0164	J.H	10/19/10	angles	.XXX ± 0.10				
				dr	0° ±2°	MM	size	D-SUB	sheet
				engr		scale	dwg no	10090926	1 of 5
				chr	JASON HSU 10/19/10	1:1			
				appd	JASON HSU 10/19/10				
					GARY HSIEH 10/19/10				
					JOSEPH HSIA 10/19/10				
sheet index	revision	B	B	B	B		cage code		
	sheet	1	2	3	4	5			

ACAD

PDM: Rev:B

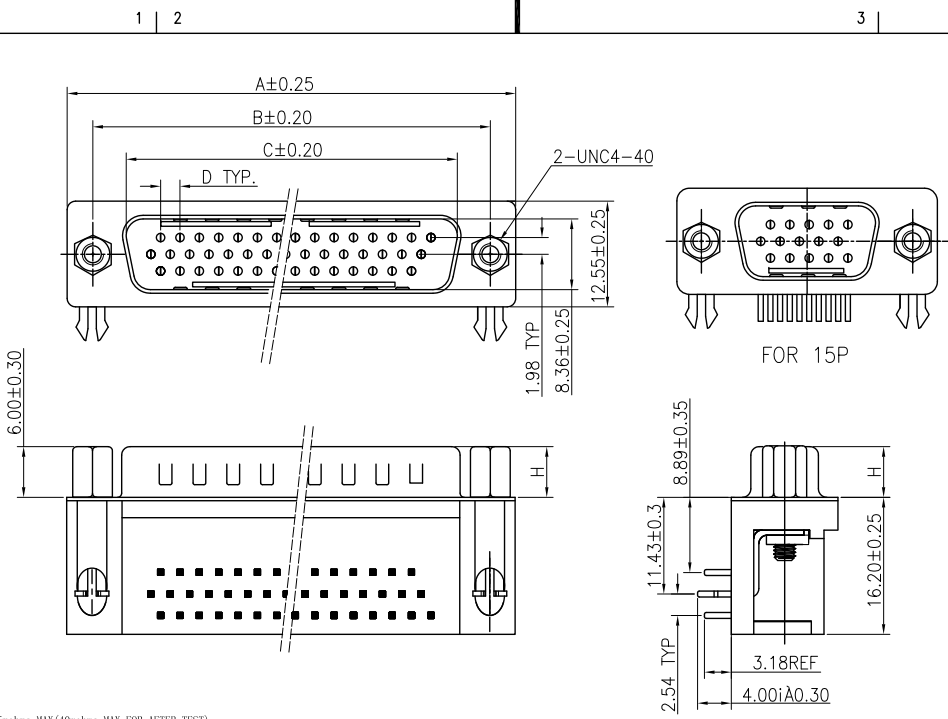
STATUS:Released

Printed: Nov 02, 2010

Tous droits strictement réservés. Reproduction ou communication à des tiers interdite sous quelque forme que ce soit sans autorisation écrite du propriétaire. Propriété de c FCI. Droits de reproduction FCI.



All rights strictly reserved. Reproduction or issue to third parties in any form whatever is not permitted without written authority from the proprietor. Property of FCI. Copyright FCI.



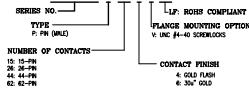
REMARK:

- CHARACTERISTICS:
  - RATED VOLTAGE: 250V
  - RATED CURRENT: 2.5AMP
  - CONTACT RESISTANCE: 25mohms MAX(40mohms MAX FOR AFTER TEST).
  - INSULATION RESISTANCE: 5000Mohms MIN.at 500V DC
  - DIELECTRIC STRENGTH: 750VRMS
  - OPERATING TEMPERATURE RANGE: -55° C~+105° C
  - INSERTION/EXTRACTION FORCE PER CONTACT: 5N Max./0.2N Min.
  - MATING/UNMATING CYCLES: 200MATINGS MIN FOR GOLD-FLASH 500MATINGS MIN FOR 30u" GOLD.

2. MATERIAL:

- INSULATORS: THERMOPLASTIC G.F.(UL94V-0) BLACK
- CONTACTS: COPPER ALLOY(G/F or 30u")TOP OVER CONTACT AREA, 100u" Min MATTE TIN TOP OVER SOLDER AREA, 50u" Min NICKEL UNDER PLATE.
- SHELL: CARBON STEEL, 100u" Min NICKEL TOP OVER, 50u" Min COPPER UNDER PLATE.
- Z BRACKET: COPPER ALLOY, 100u" Min MATTE TIN PLATED.
- SCREW LOCK: COPPER ALLOY, 50u" Min NICKEL PLATED.
- NUT: COPPER ALLOY, 50u" Min NICKEL PLATED.

3. PART NUMBER DESCRIPTION: 10090926-P XX X X LP



POS.	PART NO.	A	B	C	D	E	F	H
15P	10090926-P15*VLF	30.81	24.99	16.92	2.29	8.19	7.68	5.90 <sup>±0.25</sup>
26P	10090926-P26*VLF	39.24	33.32	25.25	2.29	8.01	7.02	5.90 <sup>±0.25</sup>
44P	10090926-P44*VLF	53.04	47.04	38.96	2.29	8.02	7.01	5.90 <sup>±0.25</sup>
62P	10090926-P62*VLF	69.32	63.50	55.42	2.41	8.21	7.03	5.90 <sup>±0.25</sup>

mat'l. code		tolerances unless otherwise specified		CUSTOMER COPY		FCI	
ltr	ecn no	dr	date	.X ± 0.38	projection	www.fciconnect.com	
B				.XX ± 0.25	title		
				.XXX ± 0.10	H/D D-SUB MALE RIGHT-ANGLE		
				0° ±2°	product family	D-SUB	code
				angles	size	dwg no	TWN
				dr JASON HSU 10/19/10	MM	10090926	sheet
				enrg JASON HSU 10/19/10	scale		2 of 5
				chr GARY HSIEH 10/19/10	1:1		
				appd JOSEPH HSIA 10/19/10			
sheet index	revision sheet						

ACAD

PDM: Rev:B

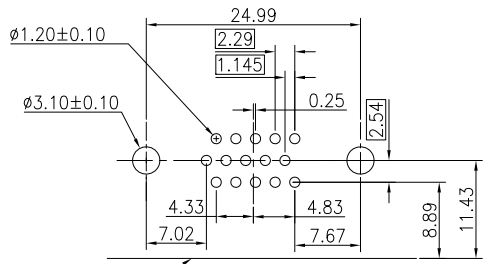
STATUS:Released

Printed: Nov 02, 2010

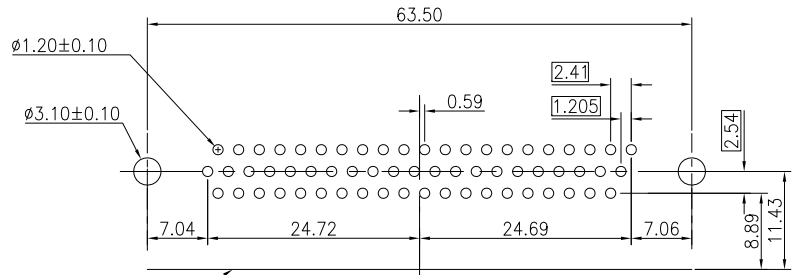
Tous droits strictement réservés. Reproduction ou communication à des tiers interdite sous quelque forme que ce soit sans autorisation écrite du propriétaire. Propriété de c FCI. Droits de reproduction FCI.



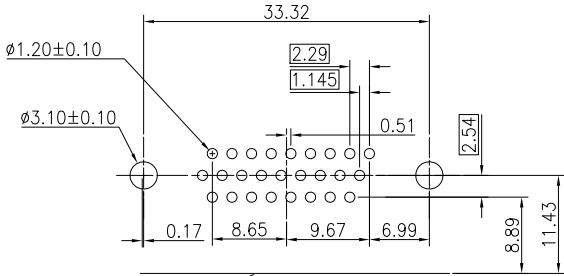
All rights strictly reserved. Reproduction or issue to third parties in any form whatever is not permitted without written authority from the proprietor. Property of FCI. Copyright FCI.



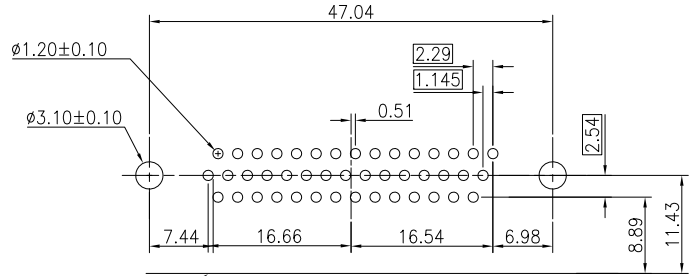
P.C.B LAYOUT(FOR 15P)



P.C.B LAYOUT(FOR 62P)



P.C.B LAYOUT(FOR 26P)



P.C.B LAYOUT(FOR 44P)

mat'l. code				tolerances unless otherwise specified			CUSTOMER COPY		FCI		www.fciconnect.com	
ltr	ecn no	dr	date	linear	.X ± 0.38	projection	title					
B					.XX ± 0.25		H/D D-SUB MALE RIGHT-ANGLE PCB					
				angles	.XXX ± 0.10		product family	D-SUB		code		
				dr	0° ± 2°	MM	size		D-SUB		TWN	
				enrg		scale	dwg no		10090926		sheet	
				chr	JASON HSU 10/19/10	1:1	A4				3 of 5	
				appd	JASON HSU 10/19/10						4	
sheet index	revision											
	sheet											

ACAD

PDM: Rev:B

STATUS:Released

Printed: Nov 02, 2010

Tous droits strictement réservés. Reproduction ou communication à des tiers interdite sous quelque forme que ce soit sans autorisation écrite du propriétaire. Propriété de c FCI. Droits de reproduction FCI.

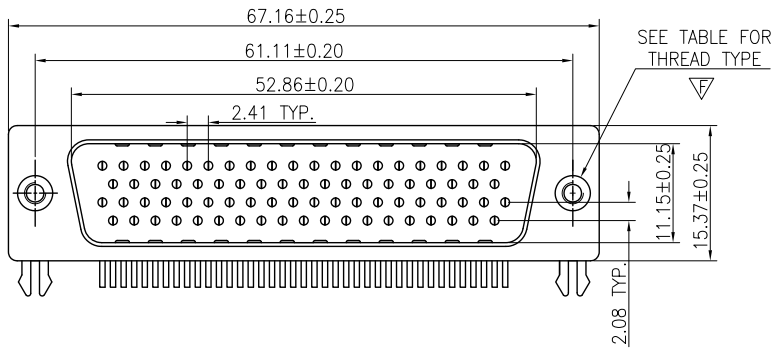


All rights strictly reserved. Reproduction or issue to third parties in any form whatever is not permitted without written authority from the proprietor. Property of FCI. Copyright FCI.

1 | 2

3

4

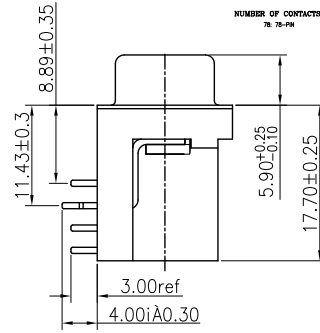
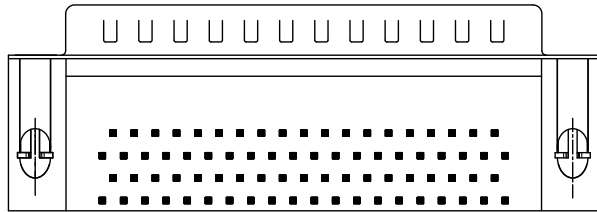


REMARK:  
 1. CHARACTERISTICS:  
 RATED VOLTAGE: 250V  
 RATED CURRENT: 2.5AMP  
 CONTACT RESISTANCE: 35mohms MAX(50mohms MAX FOR AFTER TEST).  
 INSULATION RESISTANCE: 5000Mohms MIN. at 500V DC  
 DIELECTRIC STRENGTH: 750VRMS  
 OPERATING TEMPERATURE RANGE: -55° C~105° C  
 INSERTION/EXTRACTION FORCE PER CONTACT: 5N Max./0.2N Min.  
 MATING/UNMATING CYCLES: 200MATINGS MIN FOR GOLD-FLASH  
 500MATINGS MIN FOR 30u" GOLD.

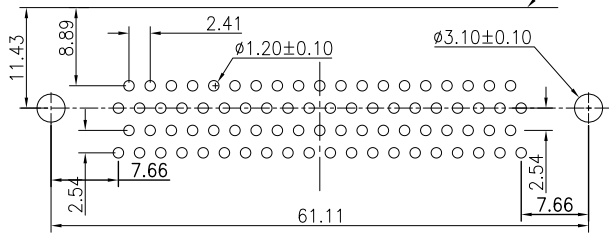
2. MATERIAL:  
 INSULATORS: THERMOPLASTIC G.F.(UL94V-0) BLACK  
 CONTACTS: COPPER ALLOY, GOLD(G/F or 30u")TOP OVER CONTACT AREA,  
 100u" Min MATTE TIN TOP OVER SOLDER AREA,  
 50u" Min NICKEL UNDER PLATE.  
 SHELL: CARBON STEEL, 100u" Min NICKEL TOP OVER,  
 50u" Min COPPER UNDER PLATE.  
 Z BRACKET: COPPER ALLOY, 100u" Min MATTE TIN PLATED.  
 SCREW LOCK: COPPER ALLOY, 50u" Min NICKEL PLATED.

3. PART NUMBER DESCRIPTION: **10090926-P XX X X LF**

SERIES NO. \_\_\_\_\_  
 TYPE P. PR (MUC) \_\_\_\_\_  
 NUMBER OF CONTACTS 78-PM \_\_\_\_\_  
 L.P. BOHS COMPLIANT  
 L1 NO CLAMPING  
 L2 INC #4-40 CONTACTS  
 CONTACT FINISH  
 4. GOLD FLASH  
 6. 50V GOLD



P.C.B EDGE



P.C.B LAYOUT

1 | 2

3

4

POS.	PART NO.	THREAD TYPE
78P	10090926-P78*LLF	M3*0.5
78P	10090926-P78*XLf	UNC #4-40

mat'l. code		tolerances unless otherwise specified		CUSTOMER COPY	
ltr	ecn no	dr	date	linear	projection
B				.X ± 0.38	title
				.XX ± 0.25	H/D D-SUB MALE RIGHT-ANGLE
				.XXX ± 0.10	product family D-SUB
				angles 0° ±2°	size dwg no
				dr JASON HSU 10/19/10	A4 10090926
				enrg JASON HSU 10/19/10	code TWN
				chr GARY HSIEH 10/19/10	4 of 5
				appd JOSEPH HSIA 10/19/10	
sheet index	revision sheet			scale 1:1	

ACAD

PDM: Rev:B

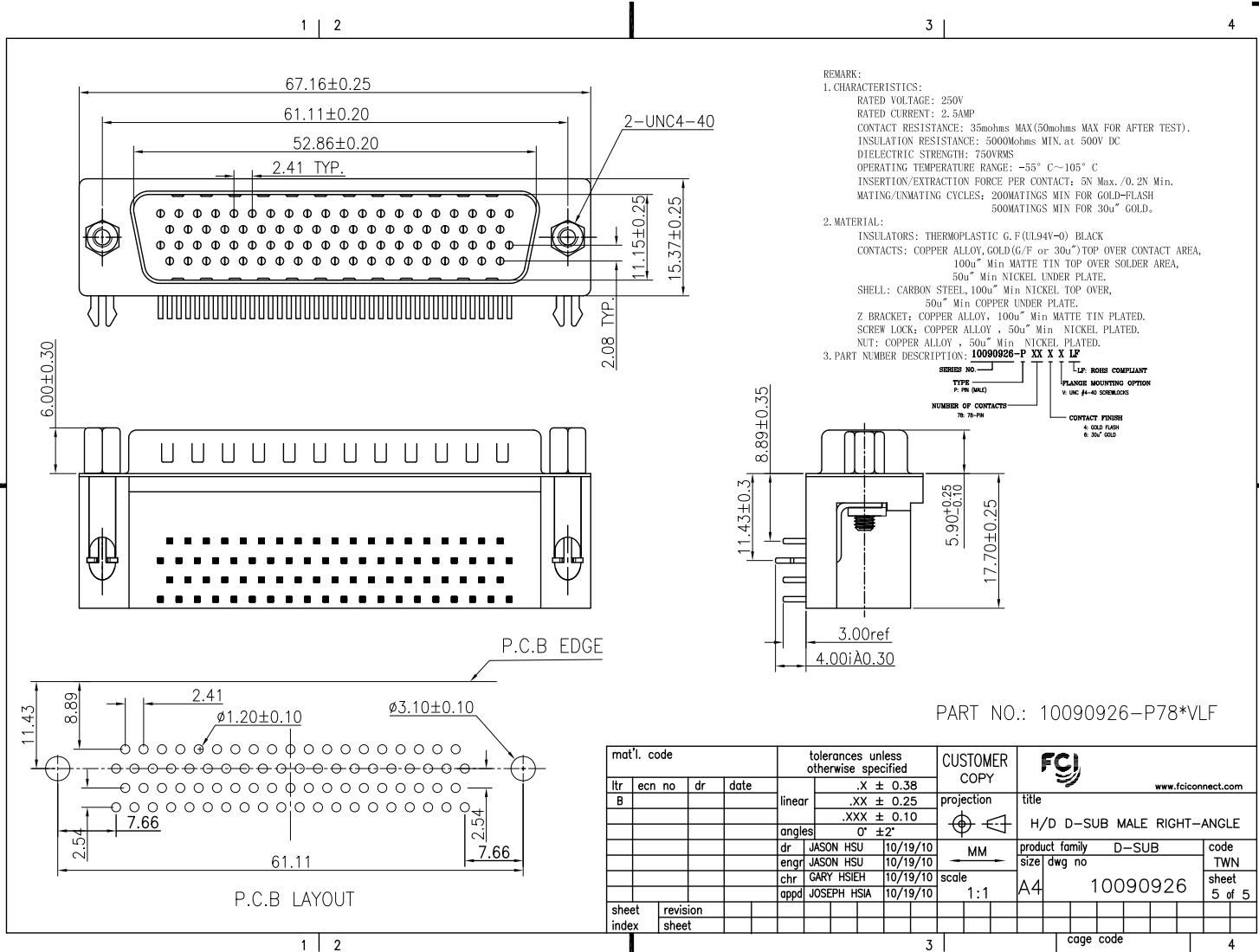
STATUS:Released

Printed: Nov 02, 2010

Tous droits strictement réservés. Reproduction ou communication à des tiers  
interdite sous quelque forme que ce soit sans autorisation écrite du propriétaire.  
Propriété de c FCI. Droits de reproduction FCI.



All rights strictly reserved. Reproduction or issue to third parties in any  
form whatever is not permitted without written authority from the proprietor.  
Property of FCI. Copyright FCI.



REMARK:

- CHARACTERISTICS:
  - RATED VOLTAGE: 250V
  - RATED CURRENT: 2.5AMP
  - CONTACT RESISTANCE: 35mohms MAX(50mohms MAX FOR AFTER TEST).
  - INSULATION RESISTANCE: 5000Mohms MIN.at 500V DC
  - DIELECTRIC STRENGTH: 750VRMS
  - OPERATING TEMPERATURE RANGE: -55° C~105° C
  - INSERTION/EXTRACTION FORCE PER CONTACT: 5N Max./0.2N Min.
  - MATING/UNMATING CYCLES: 200MATINGS MIN FOR GOLD-FLASH  
500MATINGS MIN FOR 30u" GOLD.
- MATERIAL:
  - INSULATORS: THERMOPLASTIC G.F(UL94V-0) BLACK
  - CONTACTS: COPPER ALLOY, GOLD(G/F or 30u")TOP OVER CONTACT AREA,  
100u" Min MATTE TIN TOP OVER SOLDER AREA,  
50u" Min NICKEL UNDER PLATE.
  - SHELL: CARBON STEEL, 100u" Min NICKEL TOP OVER,  
50u" Min COPPER UNDER PLATE.
  - Z BRACKET: COPPER ALLOY, 100u" Min MATTE TIN PLATED.
  - SCREW LOCK: COPPER ALLOY, 50u" Min NICKEL PLATED.
  - NUT: COPPER ALLOY, 50u" Min NICKEL PLATED.
- PART NUMBER DESCRIPTION: **10090926-P XX X X LF**
  - SERIES NO. \_\_\_\_\_
  - TYPE \_\_\_\_\_
  - P. PIN (MALE) \_\_\_\_\_
  - NUMBER OF CONTACTS \_\_\_\_\_
  - REF. BOHS COMPLIANT
  - FLANGE MOUNTING OPTION
  - X. UNC #4-40 SCREWS/LOCS
  - CONTACT FINISH
  - a. GOLD FLASH
  - b. 30u" GOLD

PART NO.: 10090926-P78\*VLF

mat'l. code				tolerances unless otherwise specified		CUSTOMER COPY		FCI	
ltr	ecn no	dr	date	linear	.X ± 0.38	projection	title	www.fciconnect.com	
B					.XX ± 0.25		H/D D-SUB MALE RIGHT-ANGLE		
				angles	.XXX ± 0.10		product family	D-SUB	code
				dr	0° ±2'	MM	size	DWG no	TWN
				enrg		scale	10090926	sheet	5 of 5
				chr	JASON HSU 10/19/10	1:1			
				appd	JASON HSU 10/19/10				
sheet index	revision								
	sheet								