

FCI CONFIDENTIAL



This document is the property of and embodies CONFIDENTIAL and PROPRIETARY information of FCI. No part of the information shown on this document may be used in any way or disclosed to others without the written consent of FCI. Copyright FCI

PRODUCT NUMBER  
20020008-XXXIB01LF

20020008- □ □ □ 1 B 0 1 L F

PITCH

C: 3.50 mm  
D: 3.81 mm  
G: 5.00 mm  
H: 5.08 mm

POLES

02: 2 POLES  
03: 3 POLES  
04: 4 POLES  
—  
24: 24 POLES

PROPERTY TABLE

FCI SERIES NAME	02-350	02-381	02-500	02-508
PITCH (mm)	3.50	3.81	5.00	5.08
VOLTAGE RATING (VAC)	300	300	300	300
CURRENT RATING (A)	8	8	12	12
SOLID/STRANDED WIRE (AWG)	16~28	16~28	12~24	12~24
WIRE CROSS SECTION (mm×mm)	1.5~0.15	1.5~0.15	4.0~0.2	4.0~0.2
WIRE STRIP LENGTH(mm)	6~7	6~7	6~7	6~7
TORQUE (N·m/Lb·in)	0.19/1.7	0.19/1.7	0.4/3.5	0.4/3.5
SCREW	M2	M2	M3	M3
WITHSTANDING VOLTAGE (kV)	1.6	1.6	1.6	1.6
OPERATING TEMP. (°C)	-40~115	-40~115	-40~115	-40~115
POLES AVAILABLE	02~24	02~24	02~24	02~24

SAFETY CERTIFICATE



pending

NOTES:

1. MATERIALS  
1-1 HOUSING: THERMALPLASTIC RESIN, UL 94V-0 RATED, COLOR GREEN.  
1-2 SCREW: STEEL, ZINC PLATED.  
1-3 CLAMP: BRASS, NICKEL PLATED.  
1-4 TERMINAL: PHOSPHOROUS BRONZES, TIN PLATED.
2. PRODUCT SPECIFICATION REFER TO FCI GS-12-625.
3. BOXED PACKAGING,  
DETAILED PRODUCT PACKING SPECIFICATION REFER TO FCI GS-14-1394.
4. FCI, SAFETY CERTIFICATE LOGO AND SERIES NAME TO BE SHOWN ON PRODUCT SURFACE.

TOLERANCES UNLESS OTHERWISE SPECIFIED		rev	ecn no	dr	date
LINEAR	X	±0.5	—	—	—
	XX	±0.30	—	—	—
	XXX	±0.10	—	—	—
ANGULAR	X°	±P	—	—	—

Material		Spec ref		tolerance		projection		MM	
Mat code		Heattreat		Plating/Finish		size		Scale	
Dr		BEER FU		062509		A4		—	
Chr		GARY HSIEH		062509		Product family		ECN	
Appr		JOSEPH HSIA		062509		Model Name		T09-1152	
Pro/E file		catalog no		Model Revision		REL Level		RELEASED	
FCI logo		TERMINAL BLOCK		Pluggable plug, hook entry side		drawing no		20020008	
Rev. C		CUSTOMER		sheet 1 of 5					

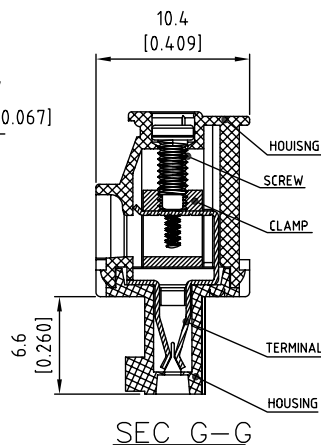
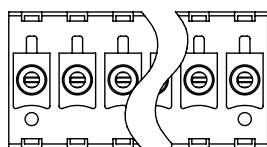
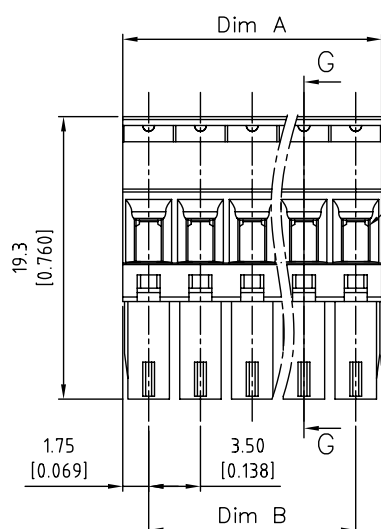
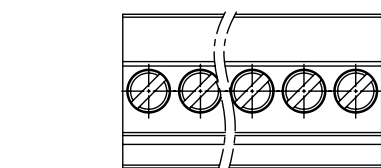
PDM: Rev:C

STATUS:Released

Printed: Feb 23, 2010






PRODUCT NUMBER	SERIES NAME	PITCH
20020008-CXX1B01LF	02-350	3.50 mm



N = Number of poles  
Dim A =  $N \times 3.5$  [0.138]  
Dim B =  $(N-1) \times 3.5$  [0.138]

TOL.	Dim A	Dim B
2-6p	$\pm 0.15$ [0.006]	
7-12p	$\pm 0.20$ [0.008]	
13-18p	$\pm 0.25$ [0.010]	
19-24p	$\pm 0.30$ [0.012]	

Material			Spec ref				
Mat code			✓	tolerance	projection 	 MM	
Heat treat							
Plating/Finish							
Dr	BEER FU	062509					
Eng	BEER FU	062509	Product family			size A4	Scale
Chr	GARY HSIEH	062509	Model Name				
Appr	JOSEPH HSIA	062509	Model Revision			ECN REL Level	T09-1152 RELEASED
	title		TERMINAL BLOCK		no deg	20020008	Rev C
	Pluggable plug, hook entry side						
Pro/E file	catalog no				CUSTOMER		sheet 2 of 5

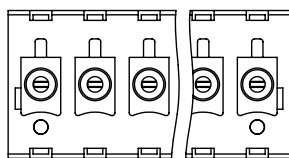
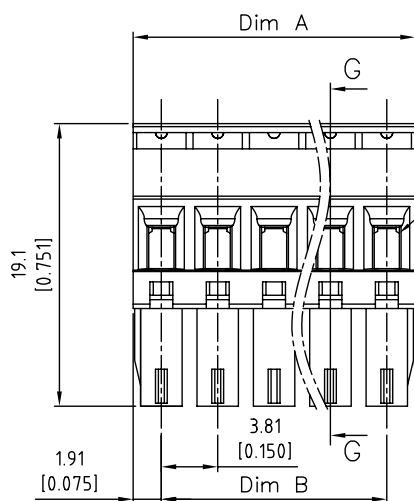
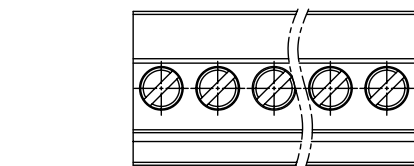
PDM: Rev: C

STATUS: Released

Printed: Feb 23, 2010

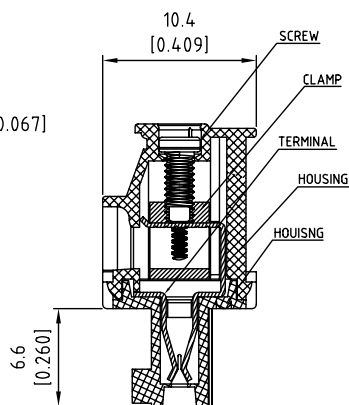


PRODUCT NUMBER	SERIES NAME	PITCH
20020008-DXX1B01LF	02-381	3.81 mm



□2.8x1.7  
[0.110x0.067]



2p to 6p with wedge, above 7p  
without wedge (including 7p)



SEC G-G

N = Number of poles  
Dim A =  $N \times 3.81$  [0.150]  
Dim B =  $(N-1) \times 3.81$  [0.150]

TOL.	Dim A	Dim B
2-6p	$\pm 0.15$ [0.006]	
7-12p	$\pm 0.20$ [0.008]	
13-18p	$\pm 0.25$ [0.010]	
19-24p	$\pm 0.30$ [0.012]	

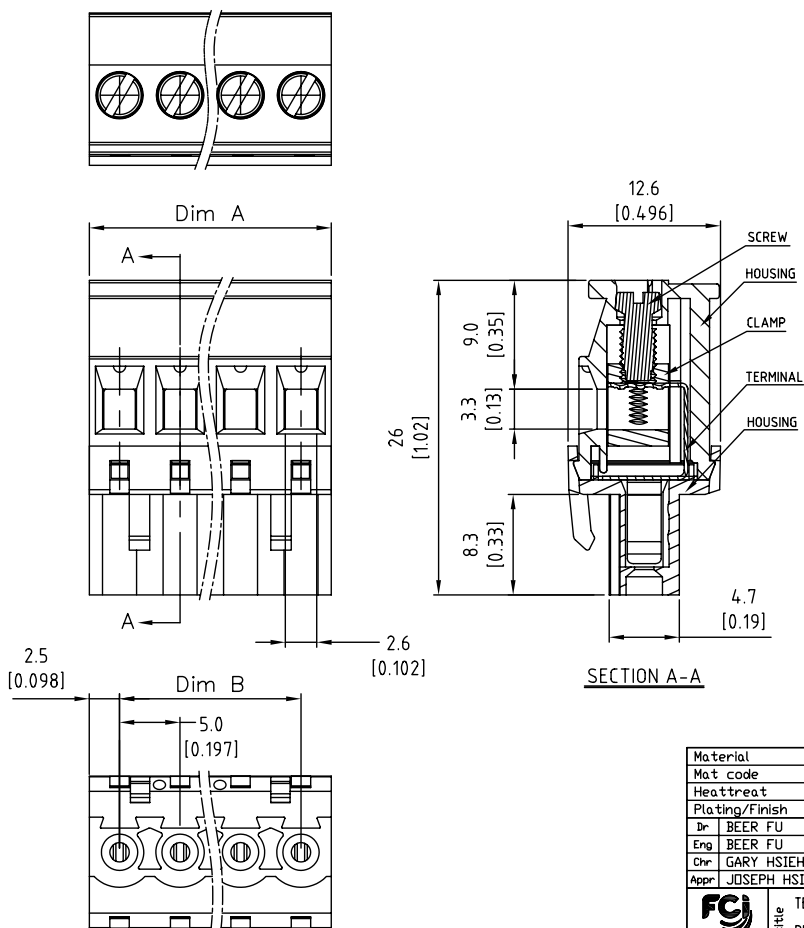
Material				Spec ref				
Mat code				✓	tolerance	projection 	MM ←————→	
Heat treat								
Plating/Finish								
Dr	BEER FU	062509				size	Scale	
Eng	BEER FU	062509	Product family			A4		
Chr	GARY HSIEH	062509	Model Name		ECN			T09-1152
Appr	JOSEPH HSIA	062509	Model Revision		REL Level			RELEASED
		title TERMINAL BLOCK				no 20020008	Rev C	
		Pluggable plug, hook entry side						
Pro/E file	catalog no				CUSTOMER	sheet 3 of 5		

PDM: Rev: C

STATUS: Released




Printed: Feb 23, 2010

PRODUCT NUMBER	SERIES NAME	PITCH
20020008-GXX1B01LF	02-500	5.00 mm



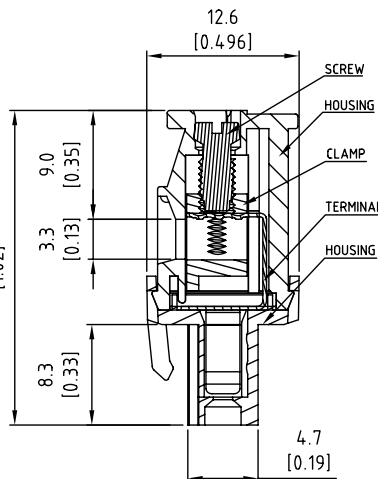
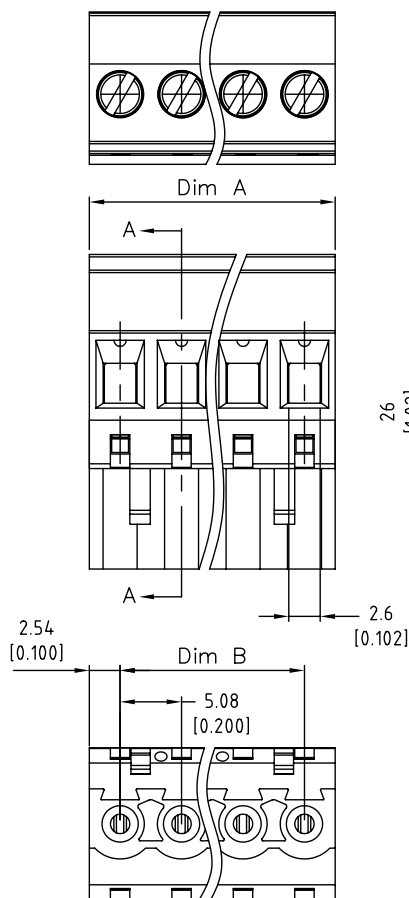
N = Number of poles  
Dim A =  $N \times 5.0 [0.197]$   
Dim B =  $(N-1) \times 5.0 [0.197]$

TOL.	Dim A	Dim B
2-6p	$\pm 0.15 [0.006]$	
7-12p	$\pm 0.25 [0.010]$	
13-18p	$\pm 0.30 [0.012]$	
19-24p	$\pm 0.40 [0.016]$	

Material			Spec ref				
Mat code			✓	tolerance	projection 		
Heat treat							
Plating/Finish							
Dr	BEER FU	062509					
Eng	BEER FU	062509	Product family			size A4	Scale
Chr	GARY HSIEH	062509	Model Name				
Appr	JOSEPH HSIA	062509	Model Revision			ECN REL Level	T09-1152 RELEASED
	title		TERMINAL BLOCK		no deg	20020008	Rev C
	Pluggable plug, hook entry side						
	Pro/E file		catalog no				





PRODUCT NUMBER	SERIES NAME	PITCH
20020008-HXXIB01LF	02-508	5.08 mm



N = Number of poles  
 Dim A =  $N \times 5.08 [0.200]$   
 Dim B =  $(N-1) \times 5.08 [0.200]$

TOL.	Dim A	Dim B
2-6p	$\pm 0.15 [0.006]$	
7-12p	$\pm 0.25 [0.010]$	
13-18p	$\pm 0.30 [0.012]$	
19-24p	$\pm 0.40 [0.016]$	

Material				Spec ref				
Mat code				✓	tolerance	projection 	MM ←————→	
Heat treat								
Plating/Finish								
Dr	BEER FU	062509				size	Scale	
Eng	BEER FU	062509	Product family			A4		
Chr	GARY HSIEH	062509	Model Name		ECN			T09-1152
Appr	JOSEPH HSIA	062509	Model Revision		REL Level	RELEASED		
				title		no		Rev
				TERMINAL BLOCK		20020008		C
				Pluggable plug, hook entry side				
Pro/E file		catalog no				CUSTOMER		sheet 5 of 5