

PRODUCT NUMBER
20020110-XXX1A01LF

20020110- 1 A 0 1 L F

PITCH

C: 3.50 mm
D: 3.81 mm
G: 5.00 mm
H: 5.08 mm

POLES

02: 2 POLES
03: 3 POLES
04: 4 POLES
24: 24 POLES

PROPERTY TABLE

FCI SERIES NAME	06-350	06-381	06-500	06-508
PITCH (mm)	3.50	3.81	5.00	5.08
VOLTAGE RATING (VAC)	300	300	300	300
CURRENT RATING (A)	10	10	12	12
WITHSTANDING VOLTAGE (kV)	1.6	1.6	1.6	1.6
OPERATING TEMP. (°C)	-40~115	-40~115	-40~115	-40~115
SOLDERING TEMP. (°C)	250±10 (5 sec.)	250±10 (5 sec.)	250±10 (5 sec.)	250±10 (5 sec.)
POLES AVAILABLE	02~24	02~24	02~24	02~24
SAFETY CERTIFICATE	FCIus		Pending	

NOTES:

1. MATERIALS
1-1 HOUSING: THERMALPLASTIC RESIN, UL 94V-0 RATED, COLOR GREEN.
1-2 TERMINAL: COPPER, TIN PLATED.
2. PRODUCT SPECIFICATION REFER TO FCI GS-12-625.
3. BOXED PACKAGING,
DETAILED PRODUCT PACKING SPECIFICATION REFER TO FCI GS-14-1394.
4. FCI, SAFETY CERTIFICATE LOGO AND SERIES NAME TO BE SHOWN ON
PRODUCT SURFACE.

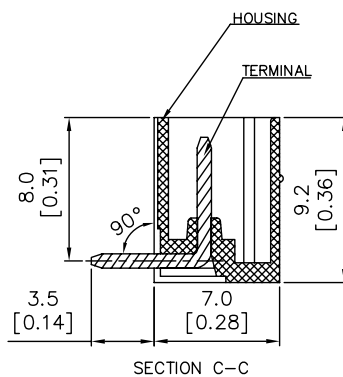
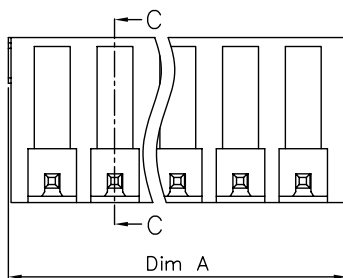
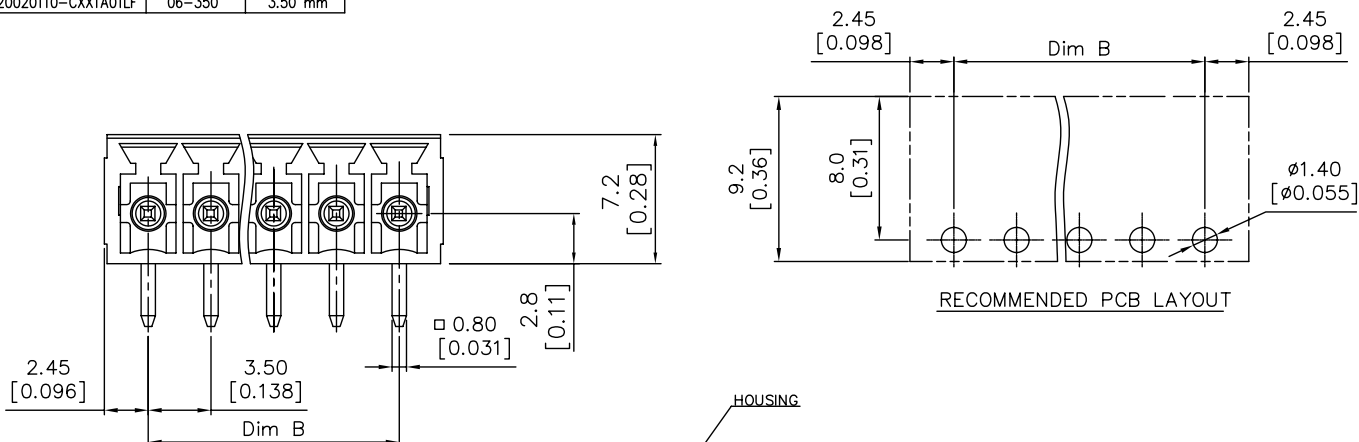
Material				Spec ref *		tolerance		projection		MM	
Mat code				Heattreat		Plating/Finish		size		Scale	
Dr				Eng		Chr		Appr		ECN	
BEER FU				062509		Product family		Model Name		T09-1152	
GARY HSIEH				062509		Model Revision		REL Level		RELEASED	
JOSEPH HSIA				062509		Model Revision		REL Level		RELEASED	
FCI				TERMINAL BLOCK		Pluggable socket, right angle		20020110		Rev. C	
Pro/E file				catalog no		CUSTOMER		sheet 1 of 5			

PDM: Rev:C

STATUS:Released

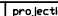


Printed: Feb 23, 2010

PRODUCT NUMBER	SERIES NAME	PITCH
20020110-CXX1A01LF	06-350	3.50 mm



N = Number of poles
Dim A = Dim B + 4.9 [0.193]
Dim B = (N - 1) × 3.5 [0.138]

TOL.	Dim A	Dim B
2-6p	±0.15 [0.006]	
7-12p	±0.20 [0.008]	
13-18p	±0.25 [0.010]	
19-24p	±0.30 [0.012]	

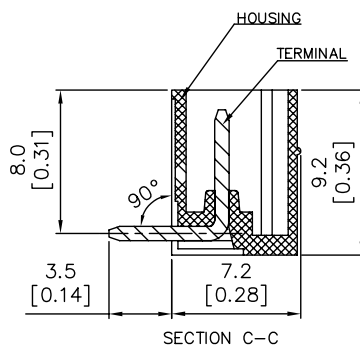
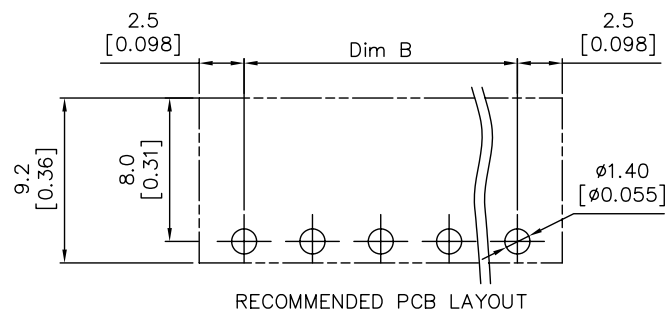
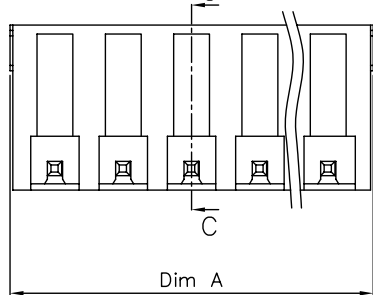
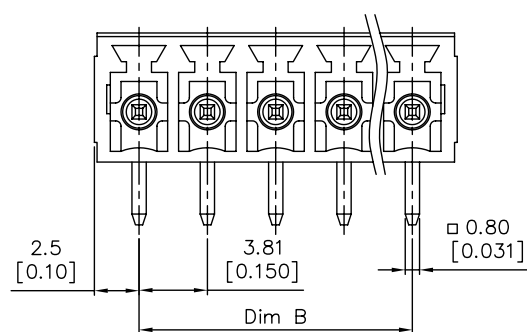
Material				Spec ref				
Mat code				✓	tolerance			
Heattreat								
Plating/Finish								
Dr	BEER FU	062509				size	A4	
Eng	BEER FU	062509	Product family					
Chr	GARY HSIEH	062509	Model Name		ECN			T09-1152
Appr	JOSEPH HSIA	062509	Model Revision			REL Level	RELEASED	
		title				no		Rev
		TERMINAL BLOCK				20020110		
		Pluggable socket, right angle						C
Pro/E file		catalog no				CUSTOMER		sheet 2 of 5

PDM: Rev: C

STATUS: Released

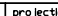


Printed: Feb 23, 2010

PRODUCT NUMBER	SERIES NAME	PITCH
20020110-DXX1A01LF	06-381	3.81 mm



N = Number of poles
Dim A = Dim B + 5.0 [0.197]
Dim B = (N - 1) x 3.81 [0.150]

TOL.	Dim A	Dim B
2-6p	±0.15 [0.006]	
7-12p	±0.20 [0.008]	
13-16p	±0.25 [0.010]	
17-24p	±0.30 [0.012]	

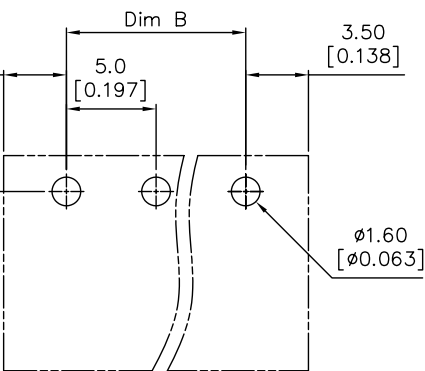
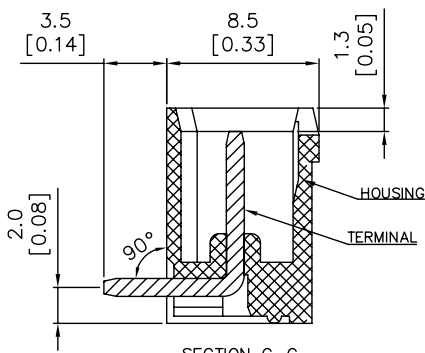
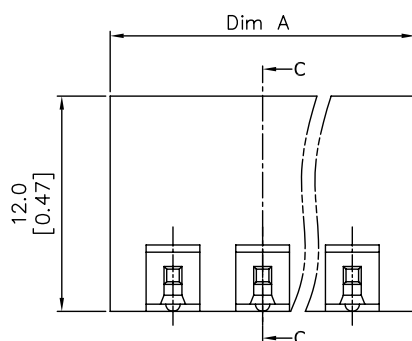
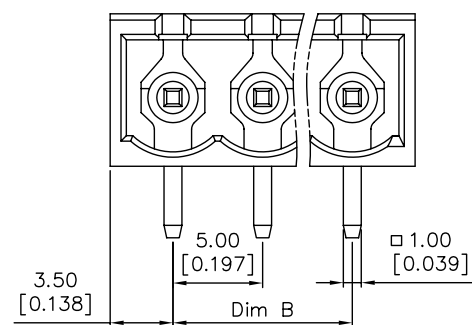
Material				Spec ref				
Mat code				✓	tolerance			
Heattreat								
Plating/Finish								
Dr	BEER FU	062509				size	Scale	
Eng	BEER FU	062509	Product family			A4		
Chr	GARY HSIEH	062509	Model Name			ECN	T09-1152	
Appr	JOSEPH HSIA	062509	Model Revision			REL Level	RELEASED	
				title		no		Rev
				TERMINAL BLOCK		20020110		C
				Pluggable socket, right angle				
Pro/E file		catalog no				CUSTOMER		sheet 3 of 5

PDM: Rev: C

STATUS: Released

Printed: Feb. 23, 2010


PRODUCT NUMBER	SERIES NAME	PITCH
20020110-GXX1A01LF	06-500	5.00 mm



RECOMMENDED PCB LAYOUT

N = Number of poles
Dim A = $N \times 5.0 [0.197] + 2.0 [0.193]$
Dim B = $(N-1) \times 5.0 [0.197]$

TOL.	Dim A	Dim B
2-6p	$\pm 0.15 [0.006]$	
7-12p	$\pm 0.25 [0.010]$	
13-16p	$\pm 0.35 [0.014]$	
17-24p	$\pm 0.40 [0.016]$	

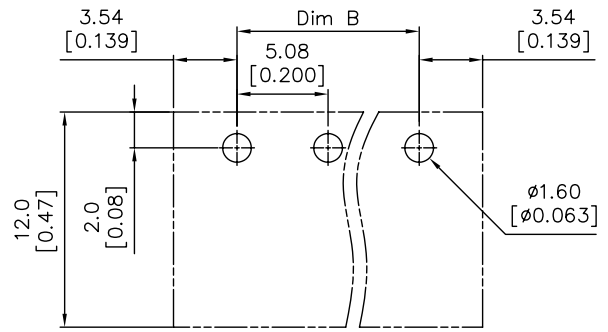
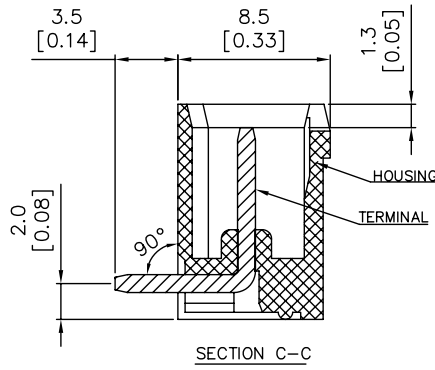
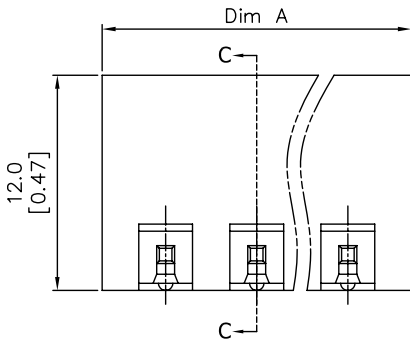
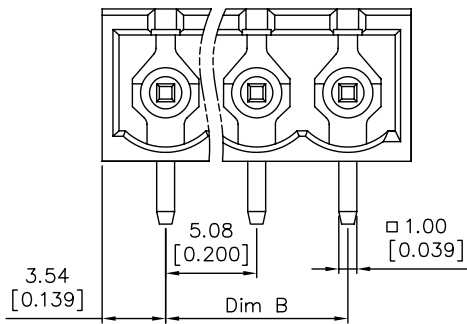
Material			Spec ref			
Mat code			✓	tolerance	projection 	MM ←————→
Heattreat						
Plating/Finish						
Dr	BEER FU	062509				
Eng	BEER FU	062509	size A4			
Chr	GARY HSIEH	062509	ECN T09-1152			
Appr	JOSEPH HSIA	062509	REL Level RELEASED			
FCI			Rev C			
title			20020110			
TERMINAL BLOCK						
Pluggable socket, right angle						
Pro/E file			CUSTOMER			
catalog no			sheet 4 of 5			

PDM: Rev: C

STATUS: Released

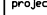


Printed: Feb 23, 2010

PRODUCT NUMBER	SERIES NAME	PITCH
20020110-HXX1A01LF	06-508	5.08 mm



N = Number of poles
 Dim A = $N \times 5.08 [0.200] + 2.0 [0.193]$
 Dim B = $(N-1) \times 5.08 [0.200]$

TOL.	Dim A	Dim B
2-6p	$\pm 0.15 [0.006]$	
7-12p	$\pm 0.25 [0.010]$	
13-18p	$\pm 0.35 [0.014]$	
19-24p	$\pm 0.40 [0.016]$	

Material			Spec. ref						
Mat code			✓	tolerance	projection 	 MM			
Heattreat									
Plating/Finish									
Dr	BEER FU	062509				size	A4	Scale	
Eng	BEER FU	062509	Product family						
Chr	GARY HSIEH	062509	Model Name			ECN T09-1152			
Appr	JOSEPH HSIA	062509	Model Revision			REL Level RELEASED			
			title			20020110			Rev. C
			TERMINAL BLOCK						
			Pluggable socket, right angle						
Pro/E file			catalog no			CUSTOMER			sheet 5 of 5

PDM: Rev: C

STATUS: Released

Printed: Feb 23, 2010