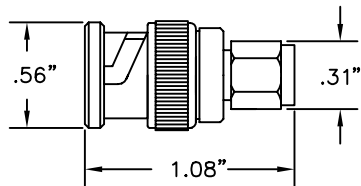


# ADAPTERS BETWEEN SERIES

## SMA MALE TO BNC MALE ADAPTORS

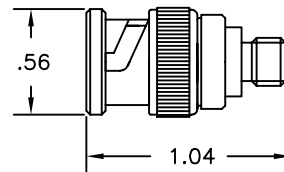
**SPECIFICATIONS**  
**HOUSING AND CONTACTS:**  
 BERYLLIUM  
 COPPER AND BRASS  
 GOLD PLATED PER MIL-G-45204.  
**INSULATION:** TEFLON.  
**ELECTRICAL:** 50 OHM.  
**IMPEDANCE:** 1000 VRMS.



Part No.	Description
9244	SMA Male to BNC Male Adaptor

## SMA FEMALE TO BNC MALE ADAPTORS

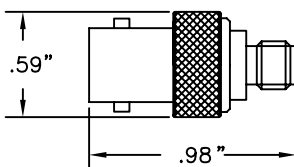
**SPECIFICATIONS**  
**HOUSING AND CONTACTS:**  
 BERYLLIUM COPPER AND BRASS  
 GOLD PLATED PER MIL-G-45204.  
**INSULATION:** TEFLON.  
**ELECTRICAL:** 50 OHM.  
**IMPEDANCE:** 1000 VRMS.



Part No.	Description
9216	SMA Female to BNC Male Adaptor

## SMA FEMALE TO BNC FEMALE ADAPTOR

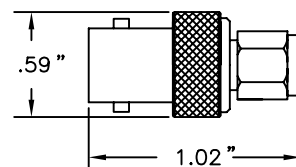
**SPECIFICATIONS**  
**HOUSING AND CONTACTS:**  
 BERYLLIUM COPPER AND BRASS  
 GOLD PLATED PER MIL-G-45204.  
**INSULATION:** TEFLON.  
**ELECTRICAL:** 50 OHM.



Part No.	Description
9323	SMA Female to BNC Female Adaptor

## SMA MALE TO BNC FEMALE ADAPTOR

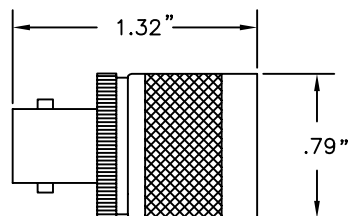
**SPECIFICATIONS**  
**HOUSING AND CONTACTS:**  
 BERYLLIUM COPPER AND BRASS  
 GOLD PLATED PER MIL-G-45204.  
**INSULATION:** TEFLON.  
**ELECTRICAL:** 50 OHM.  
**IMPEDANCE:** 1000 VRMS.



Part No.	Description
9324	SMA Male to BNC Female Adaptor

## "N" MALE TO BNC FEMALE ADAPTOR

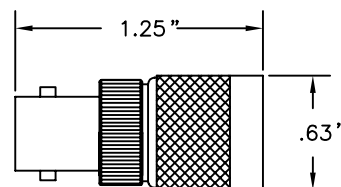
**SPECIFICATIONS**  
**HOUSING:** BRASS.  
**INSULATION:** TEFLON.  
**CONTACT:** BERYLLIUM  
 COPPER SILVER PLATED.  
**ELECTRICAL:** 50 OHM.  
**IMPEDANCE:** 1000 VRMS.



Part No.	Description
9327	Adaptor, Tarnish Resistant Finish
9047	Adaptor UG 201 A/U Silver Finish

## TNC MALE TO BNC FEMALE ADAPTOR

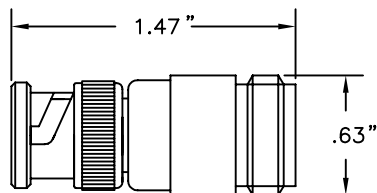
**SPECIFICATIONS**  
**HOUSING:** BRASS WITH A  
 TARNISH RESISTANT FINISH.  
**INSULATION:** TEFLON.  
**CONTACT:** BRASS AND  
 BERYLLIUM COPPER  
 GOLD PLATED.  
**ELECTRICAL:** 50 OHM.  
**IMPEDANCE:** 500 VRMS.



Part No.	Description
9298	TNC Male to BNC Female

## TYPE "N" FEMALE TO BNC MALE ADAPTOR

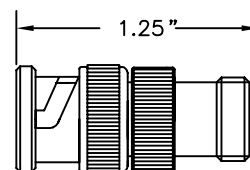
**SPECIFICATIONS**  
**HOUSING:** BRASS WITH A TARNISH  
 RESISTANT FINISH.  
**INSULATION:** TEFLON.  
**CONTACTS:** BRASS AND BERYLLIUM  
 COPPER SILVER PLATED.  
**ELECTRICAL:** 50 OHMS.



Part No.	Description
9326	Tarnish Resistant Finish Housing
9048	Silver Finish, UG-349 B/U

## TNC FEMALE TO BNC MALE, ADAPTOR

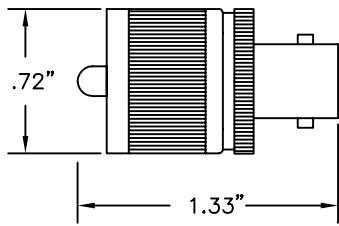
**SPECIFICATIONS**  
**HOUSING:** BRASS WITH A  
 TARNISH RESISTANT FINISH.  
**INSULATION:** TEFLON.  
**CONTACTS:** BRASS AND  
 BERYLLIUM COPPER SILVER  
 PLATED.  
**ELECTRICAL:** 50 OHMS.  
**IMPEDANCE:** 500 VRMS.



Part No.	Description
9315	TNC Female to BNC Male

# ADAPTERS BETWEEN SERIES

## BNC FEMALE TO UHF MALE ADAPTOR

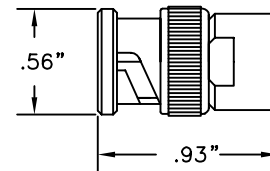


### SPECIFICATIONS

**HOUSING:** BRASS WITH A TARNISH RESISTANT FINISH.  
**INSULATION:** REXOLITE.  
**CONTACTS:** BERYLLIUM COPPER AND BRASS SILVER PLATED.  
**ELECTRICAL:** 50 OHM.  
**IMPEDANCE:** 500 VRMS.

Part No.	Description
9001	BNC Female to UHF Male Adaptor

## LOC FEMALE TO BNC MALE ADAPTOR

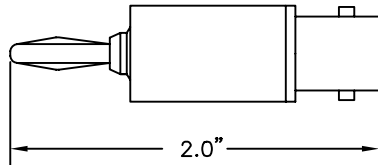


### SPECIFICATIONS

**HOUSING:** BRASS WITH A TARNISH RESISTANT FINISH.  
**INSULATION:** TEFLON.  
**CONTACTS:** BRASS AND BERYLLIUM COPPER GOLD PLATED.  
**ELECTRICAL:** 50 OHM IMPEDANCE.

Part No.	Description
8935	LOC Female to BNC Male Adaptor

## BNC FEMALE TO STANDARD BANANA PLUG ADAPTOR

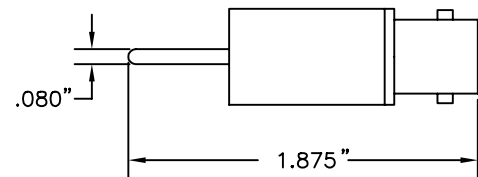


### SPECIFICATIONS

**HANDLE:** DELRIN, BLACK.  
**BNC:** BRASS TARNISH RESISTANT FINISH.  
**INSULATION:** TEFLON.  
**CONTACT:** BERYLLIUM COPPER SILVERPLATED.  
**BANANA PLUG:** NICKEL PLATED BRASS FRAME WITH A NICKEL SILVER SPRING.

Part No.	Description
8013	BNC Female to STD Banana Plug

## BNC FEMALE TO STANDARD .080 (2.03mm) PIN ADAPTOR

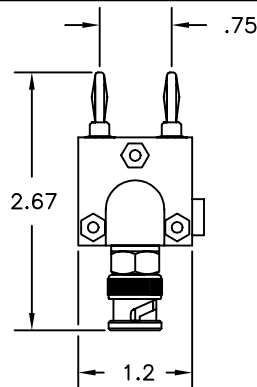


### SPECIFICATIONS

**HANDLE:** DELRIN, BLACK.  
**BNC:** BRASS TARNISH RESISTANT FINISH.  
**CONTACT:** BERYLLIUM COPPER SILVER PLATED.  
**PIN PLUG:** BRASS NICKEL PLATED.

Part No.	Description
8039	BNC Female to .080" (2.03mm) Pin

## BNC MALE TO STANDARD DOUBLE BANANA PLUG ADAPTOR

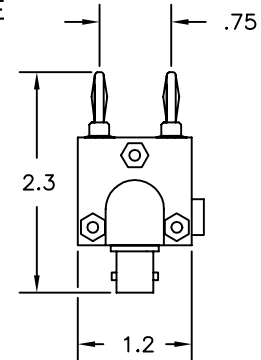


### SPECIFICATIONS

**HOUSING:** MOLDED NYLON, BLACK.  
**BANANA PLUGS:** NICKEL PLATED BRASS FRAME WITH NICKEL SILVER SPRINGS FITS STD. .166" DIA. SOCKETS.  
**BNC MALE:** BRASS HOUSING WITH A TARNISH RESISTANT FINISH, TEFLON INSULATION AND BRASS SILVER PLATED CENTER CONTACT.

Part No.	Description
9248	BNC Male to Std. Double Banana Plug

## BNC FEMALE TO STANDARD DOUBLE BANANA PLUG ADAPTOR

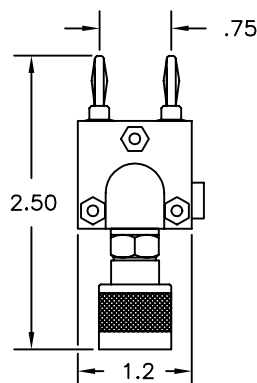


### SPECIFICATIONS

**HOUSING:** MOLDED NYLON, BLACK.  
**BANANA PLUGS:** NICKEL PLATED BRASS FRAME WITH NICKEL SILVER SPRINGS FITS STD. .166" DIA. SOCKETS.  
**BNC FEMALE:** BRASS HOUSING WITH A TARNISH RESISTANT FINISH, TEFLON INSULATION AND A BERYLLIUM COPPER SILVER PLATED CENTER CONTACT.

Part No.	Description
9225	BNC Female to Double Banana Plug

## TYPE "N" MALE TO STANDARD DOUBLE BANANA PLUG ADAPTOR

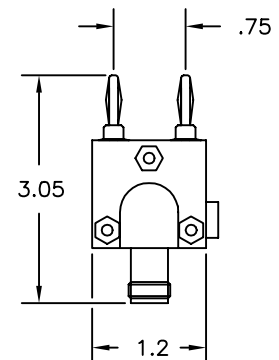


### SPECIFICATIONS

**HOUSING:** MOLDED NYLON, BLACK.  
**BANANA PLUGS:** NICKEL PLATED BRASS FRAME WITH NICKEL SILVER SPRINGS FITS STD. .166" DIA. SOCKETS.  
**TYPE "N" MALE CONNECTOR:** BRASS HOUSING WITH A TARNISH RESISTANT FINISH, TEFLON INSULATION AND A BRASS SILVER PLATED CENTER CONTACT.

Part No.	Description
9415	Type "N" Male to Std. Double Banana

## TYPE "N" FEMALE TO STANDARD DOUBLE BANANA PLUG ADAPTOR



### SPECIFICATIONS

**HOUSING:** MOLDED NYLON, BLACK.  
**BANANA PLUGS:** NICKEL PLATED BRASS FRAME WITH NICKEL SILVER SPRINGS FITS STD. .166" DIA. SOCKETS.  
**TYPE "N" FEMALE CONNECTOR:** BRASS HOUSING WITH A TARNISH RESISTANT FINISH, TEFLON INSULATION AND A BERYLLIUM COPPER SILVER PLATED CENTER CONTACT.

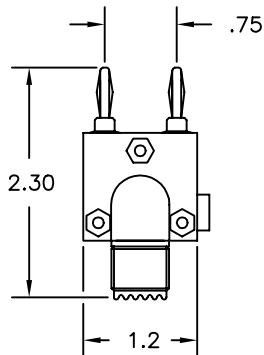
Part No.	Description
9414	Type "N" Female to Std. Double Banana

# ADAPTERS BETWEEN SERIES

## UHF FEMALE TO STANDARD DOUBLE BANANA PLUG ADAPTOR

### SPECIFICATIONS

**HOUSING:** MOLDED NYLON, BLACK.  
**BANANA PLUGS:** NICKEL PLATED BRASS FRAME WITH NICKEL SILVER SPRINGS FITS STD. .166" DIA. SOCKETS.  
**UHF FEMALE CONNECTOR:** BRASS HOUSING WITH ATARNISH RESISTANT FINISH, TEFLON INSULATION AND A SILVER PLATED BRASS CENTER CONTACT.

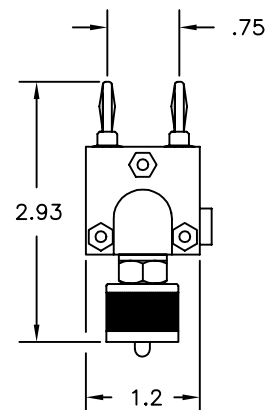


Part No.	Description
9226	UHF Female to Std. Double Banana

## UHF MALE TO DOUBLE BANANA PLUG ADAPTOR

### SPECIFICATIONS

**HOUSING:** MOLDED NYLON, BLACK.  
**BANANA PLUGS:** NICKEL PLATED BRASS FRAME WITH NICKEL SILVER SPRINGS FITS STD. .166" DIA. SOCKETS.  
**UHF MALE CONNECTOR:** BRASS HOUSING WITH A TARNISH RESISTANT FINISH, PHENOLIC INSULATION AND A SILVER PLATED BRASS CENTER CONTACT.

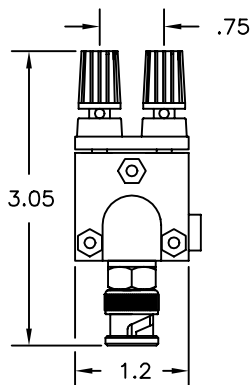


Part No.	Description
9418	UHF Male to Double Banana Adaptor

## BNC MALE TO DOUBLE BINDING POST ADAPTOR

### SPECIFICATIONS

**HOUSING:** MOLDED NYLON, BLACK.  
**BINDING POSTS:** 1 RED, 1 BLACK WITH .166" DIA. SOCKETS AND .085" CROSS HOLES.  
**BNC MALE:** BRASS HOUSING WITH A TARNISH RESISTANT FINISH, TEFLON INSULATION AND A SILVER PLATED BRASS CENTER CONTACT.

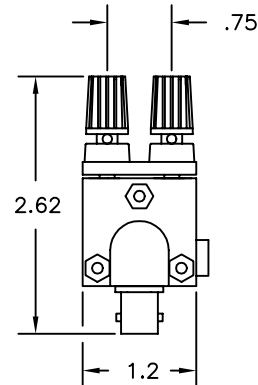


Part No.	Description
9410	BNC Male to Double Binding Post

## BNC FEMALE TO DOUBLE BINDING POST ADAPTOR

### SPECIFICATIONS

**HOUSING:** MOLDED NYLON, BLACK.  
**BINDING POSTS:** 1 RED, 1 BLACK WITH .166" DIA. BANANA SOCKETS AND .085" DIA. CROSS HOLES.  
**BNC FEMALE:** BRASS HOUSING WITH A TARNISH RESISTANT FINISH, TEFLON INSULATION AND A BERYLLIUM COPPER SILVER PLATED CENTER CONTACT.

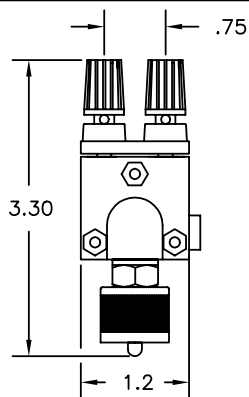


Part No.	Description
9411	BNC Female to Double Binding Post

## UHF MALE TO DOUBLE BINDING POST ADAPTOR

### SPECIFICATIONS

**HOUSING:** MOLDED NYLON, BLACK.  
**BINDING POST:** 1 RED, 1 BLACK WITH .166" DIA. BANANA SOCKETS AND .085" DIA. CROSS HOLES.  
**UHF MALE CONNECTOR:** HOUSING BRASS WITH A TARNISH RESISTANT FINISH, PHENOLIC INSULATION AND A SILVER PLATED BRASS CENTER CONTACT.

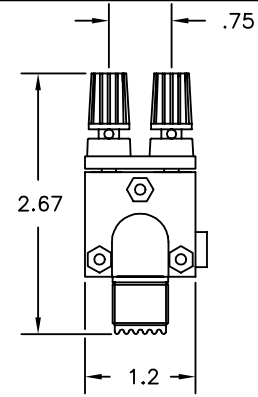


Part No.	Description
9413	UHF Male to Double Binding Post

## UHF FEMALE TO DOUBLE BINDING POST ADAPTOR

### SPECIFICATIONS

**HOUSING:** MOLDED NYLON, BLACK.  
**BINDING POST:** 1 RED 1 BLACK WITH .166" DIA. BANANA SOCKETS AND .085" DIA. CROSS HOLES.  
**UHF FEMALE CONNECTOR:** BRASS HOUSING WITH A TARNISH RESISTANT FINISH, TEFLON INSULATION AND A SILVER PLATED BRASS CENTER CONTACT.

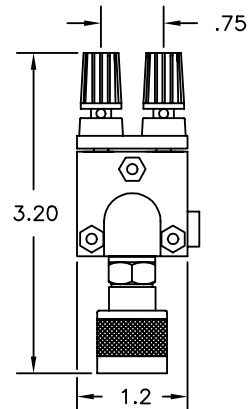


Part No.	Description
9412	UHF Female to Double Binding Post

## TYPE "N" MALE TO DOUBLE BINDING POST ADAPTOR

### SPECIFICATIONS

**HOUSING:** MOLDED NYLON, BLACK.  
**BINDING POSTS:** 1 RED, 1 BLACK WITH .166" DIA. BANANA SOCKETS AND .085" CROSS HOLES.  
**TYPE "N" MALE CONNECTOR:** BRASS HOUSING WITH A TARNISH RESISTANT FINISH, TEFLON INSULATION AND A SILVER PLATED BRASS CENTER CONTACT.

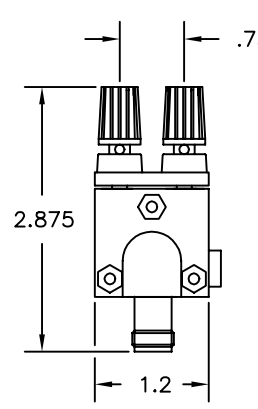


Part No.	Description
9416	Type "N" Male to Double Binding Post

## TYPE "N" FEMALE TO DOUBLE BINDING POST ADAPTOR

### SPECIFICATIONS

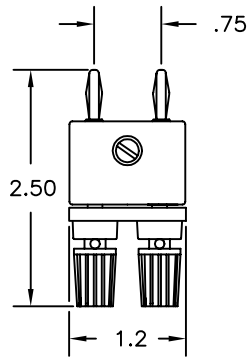
**HOUSING:** MOLDED NYLON BLACK.  
**BINDING POSTS:** 1 RED, 1 BLACK WITH .166" DIA. BANANA SOCKETS AND .085" CROSS HOLES.  
**TYPE "N" FEMALE CONNECTOR:** BRASS HOUSING WITH A TARNISH RESISTANT FINISH, TEFLON INSULATION AND A BERYLLIUM COPPER SILVER PLATED CENTER CONTACT.



Part No.	Description
9417	Type "N" Female to Double Binding Post

# ADAPTERS BETWEEN SERIES

## DOUBLE BANANA PLUGS TO BINDING POSTS



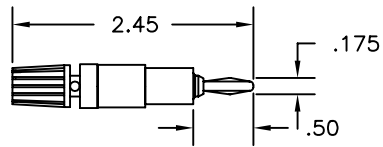
### SPECIFICATIONS

**BINDING POST:** 1 RED, 1 BLACK WITH .166" DIA. BANANA SOCKETS AND .085" DIA. CROSS HOLES.

**BANANA PLUGS:** NICKEL PLATED BRASS FRAME . NICKEL SILVER SPRINGS FITS STANDARD .166" DIA. SOCKETS.

Part No.	Description
9409	Double Banana Plugs to Binding Posts

## BINDING POST TO STANDARD BANANA PLUG



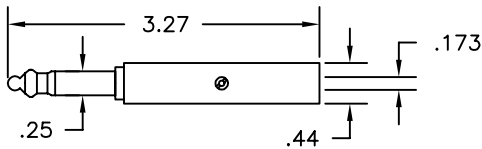
### SPECIFICATIONS

**BINDING POST:** MOLDED PLASTIC THUMB-SCREW WITH .166" DIA. BANANA SOCKET AND .085" DIA. CROSS HOLE.

**BANANA PLUG:** NICKEL PLATED BRASS FRAME . NICKEL SILVER SPRING. ITEM IS AVAILABLE IN RED OR BLACK.

Part No.	Description
9329	Binding Post to Std. Banana Plug

## WE 310 (PJ 51) PLUG TO MINIATURE BANTAM JACK ADAPTOR



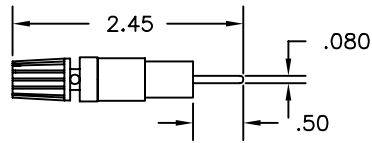
### SPECIFICATIONS

**FRAME:** BRASS, UNPLATED.

**HANDLE:** MOLDED NYLON RED IN COLOR. WHEN THE PLUG IS INSERTED IN A STANDARD JACK, TIP, RING, AND SLEEVE CONNECTION ARE TRANSFERRED TO THE BANTAM PLUG INSERTED IN THE REAR OF THE PLUG.

Part No.	Description
9325	WE-310 Plug to Bantam Jack Adaptor

## BINDING POST TO .080 PIN PLUG



### SPECIFICATIONS

**BINDING POST:** MOLDED PLASTIC THUMB-SCREW WITH .166" DIA. BANANA SOCKET AND .085" DIA. CROSS HOLE.

**.080" PIN PLUG:** NICKEL PLATED BRASS. ITEM IS AVAILABLE IN RED OR BLACK.

Part No.	Description
9330	Binding Post to .080" Pin Plug

# E-Z-FLEX™ TEST ADAPTORS

PART NO.	AWG	CONTACT DIA	TYPE OF CONTACT
9334 (color)	22	.030" (.762mm)	Socket
9338 (color)	22	.030" (.762mm)	Pin
9335 (color)	20	.040" (1.02mm)	Socket
9339 (color)	20	.040" (1.02mm)	Pin
9336 (color)	16	.062" (1.60mm)	Socket
9340 (color)	16	.062" (1.60mm)	Pin
9337 (color)	12	.094" (2.36mm)	Socket
9341 (color)	12	.094" (2.36mm)	Pin

**DESCRIPTION:** Banana socket end is brass tin plated. All the contact ends are gold plated. The flexible insulation is a molded plastic and available in red or black.

Drawings below are for 9335 and 9339. All other part numbers are the same overall size and shape, except for their respective socket and pin ends.

