

Greenlee Storage Products

Security from the start,
a tougher finish to last.



Storage Chests



Cabinets



Slant-Top/Flat-Top
Storage Boxes



Specialized Storage



Peace of mind, 24/7/365.

Your tools and equipment need to be there for you, year after year. They have to handle harsh environments. Hard knocks. And constant use. So we build Greenlee storage boxes for the long run. With features you won't find on other boxes – features that say “we know what you go through.”

Strong enough for your toughest worksites.

Considering their heavy-weight, 16-gauge steel construction, you'd expect Greenlee storage boxes to be strong. But we make them even stronger. We add overlapping corners. Smooth, safe rolled edges. Strategically located reinforcement. And hefty overlapping doors. So you get the strength and rigidity it takes to stand up anywhere. For a long, long time.

When others are finished, our industrial powder-coat paint hangs tough.

We start with electrostatically charged powder, sprayed onto a storage box that's grounded. That makes the powder coat all box surfaces, thickly and uniformly. Even the edges. Then we bake to fuse the powder into a dense, hard, seamless coating. The result? A textured finish that's far more durable than conventional baked enamel. So it lasts longer. Protects steel better. Fights rust harder. And helps bring you a better box for your money.



Stops thieves – even if they know the drill.



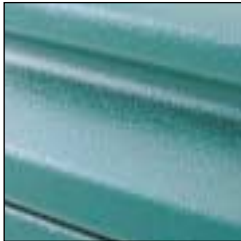
We've been at plants and jobsites at sunrise. Seen drilled-out locks. Empty boxes. And managers and contractors who've lost tools, supplies – and time they can't replace. So we designed our boxes differently. Most models feature patented, dual, recessed lock enclosures. Making these the only boxes to prevent thieves from drilling out locks. There's no access for bolt cutters either. And for even more security, we use continuous, non-removable pin hinges.



Full-width, grooved-edge lid provides an easy grip, no matter where you stand.



Overlapping lid closure helps lock out weather – and vandals.



NEW – Textured industrial powder-coat finish. Protects better and lasts longer.



Extra-strong continuous hinge features a non-removable pin to enhance security.



Skids are 3-1/2" high to provide plenty of clearance for lift-truck forks. So it's easier to move Greenlee storage boxes – and harder to damage them.



Overlapping welded seams are stiffer, stronger, and more secure.



Large, heavy-duty handles fold flush to avoid impact damage.

Choose mobile storage in a full range of sizes — all with Greenlee-level security.

When it's portable, it's bound to get knocked around. These high-value Greenlee boxes can take it. Here's versatile, durable, secure storage that's perfect for contractors — or just about anybody else.

All models feature our new industrial, textured powder-coat finish that's far tougher than conventional baked enamel.



Mobile Storage Chests

Get all of Greenlee's premium construction features in these rock-solid mobile chests – including our patented, recessed and concealed lock protectors that provide maximum security and help prevent lock corrosion. All models except Model 1332 have dual lock protectors. Here's the peace of mind and durability you've been looking for.

- Heavy-duty, continuous hinges include non-removable pins to stop thieves.
- Enhanced lid bolster for added support and durability (except Model 1332).
- Finger-groove lid provides an easy grip for opening, anywhere along the length of the lid.
- Convenient storage tray on back wall for small items (except Model 1332).
- Locking steel support arms hold lid securely in open position.
- Large, fold-down, recessed handles for easy chest relocation.
- Skids are angled, so they're extra sturdy. They include pre-drilled holes for simple caster installation.



Specifications

Cat. No.	UPC No.	Capacity		Height		Width		Depth		Weight	
		Ft ³	m ³	in.	mm	in.	mm	in.	mm	lbs.	kg.
1332	38717	4.9	.14	14	356	32	813	19	483	83	37.6
1636	38718	6.7	.19	17	432	36	914	19	483	99	44.9
2142	31651	9.7	.27	20	508	42	1067	20	508	113	51
2448	23373	16	.45	24	610	48	1219	24	610	146	66
2460	23363	20	.57	24	610	60	1524	24	610	146	66
3048	23362	25	.71	30	762	48	1219	30	762	183	83
NEW! 2472	07483	24	.68	24	610	72	1829	24	610	185	84

Small Storage Chests

Simple, affordable, and a great way to protect small tools and supplies. These economical boxes feature a single lock hasp for use with a padlock.

- Compact side handles for easy portability.
- Heavy-duty hinges hold up to continuous use.
- Chain connector holds lid in open position.



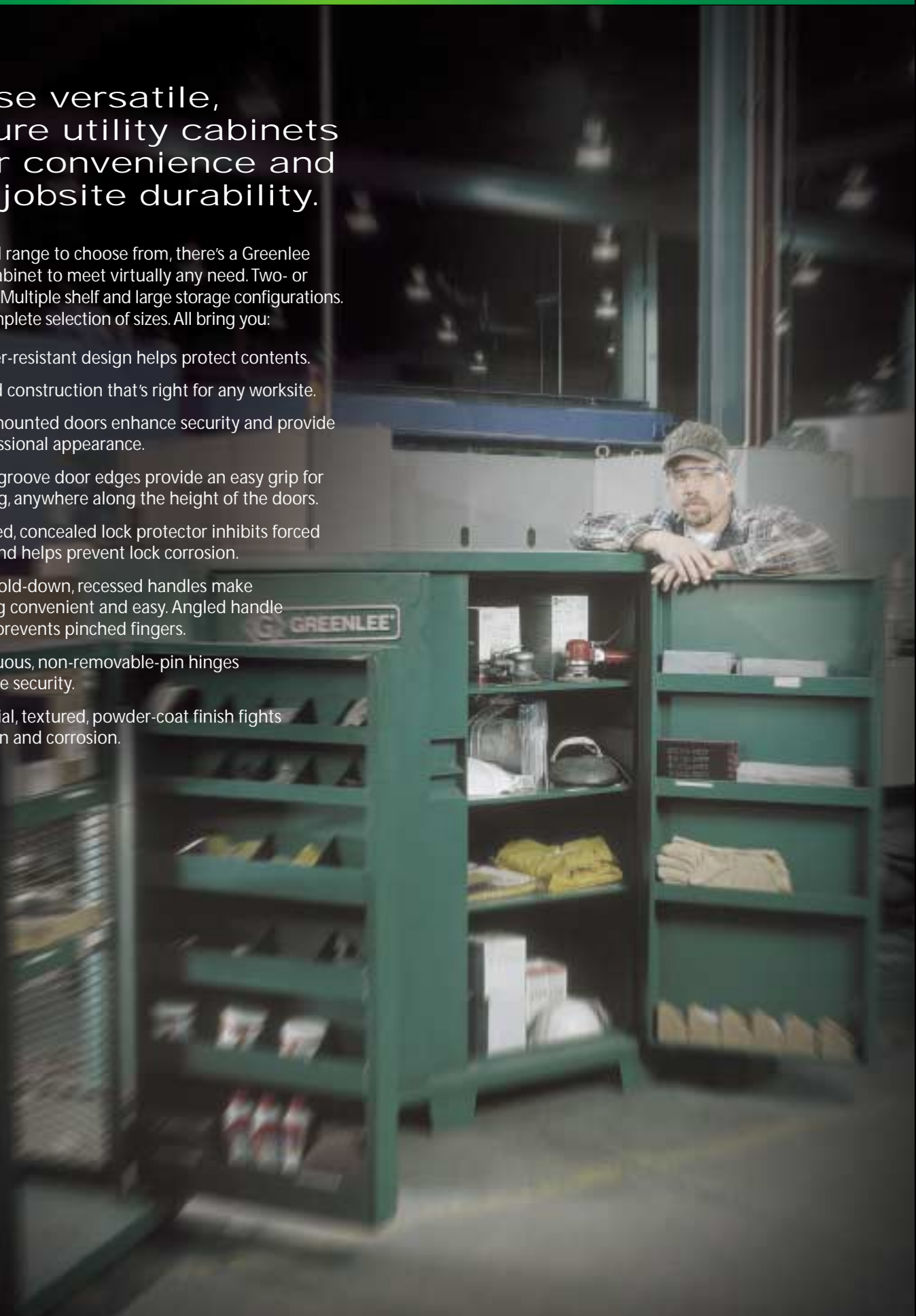
Specifications

Cat. No.	UPC No.	Capacity		Height		Width		Depth		Weight	
		Ft ³	m ³	in.	mm	in.	mm	in.	mm	lbs.	kg
1230	31510	3.3	.09	12	305	30	762	16	406	48	21.8
1531	23274	4.5	.13	15	381	31	787	18	457	51	23.1

These versatile, secure utility cabinets offer convenience and any-jobsite durability.

With a full range to choose from, there's a Greenlee storage cabinet to meet virtually any need. Two- or four-door. Multiple shelf and large storage configurations. And a complete selection of sizes. All bring you:

- Weather-resistant design helps protect contents.
- Rugged construction that's right for any worksite.
- Flush-mounted doors enhance security and provide a professional appearance.
- Finger-groove door edges provide an easy grip for opening, anywhere along the height of the doors.
- Recessed, concealed lock protector inhibits forced entry and helps prevent lock corrosion.
- Large, fold-down, recessed handles make carrying convenient and easy. Angled handle recess prevents pinched fingers.
- Continuous, non-removable-pin hinges enhance security.
- Industrial, textured, powder-coat finish fights abrasion and corrosion.



Utility Cabinets

In both two-door and four-door styles, these workhorse cabinets combine the convenience of two easy-access doors with a sturdy, reinforced shelf design.

- Reinforced, high-strength shelves.
- Convenient front-door storage (plus rear-door storage on Model 5760).
- Large, lower storage area accommodates bulky items.
- Angled support skids to enhance load capacity.
- Model 5660LH provides open storage for shovels, picks, brooms, and other long-handled tools.
- Optional casters are available for easy mobility.



3448



5660L



5760



5760TD



5660LH

Specifications

Cat. No.	UPC No.	Capacity		Height		Width		Depth		Weight	
		Ft ³	m ³	in.	mm	in.	mm	in.	mm	lbs.	kg.
3448	38720	22.5	.64	34	864	48	1219	24	610	201	91.2
5660L	38659	46	1.3	56	1422	60	1524	24	610	401	182
NEW! 5660LH	07486	46	1.3	56	1422	60	1524	24	610	408	185
5760	38722	59.3	1.68	56	1422	60	1524	30	672	437	198
NEW! 5760TD	07969	59.3	1.68	56	1422	60	1524	30	672	467	212

Greenlee's sturdy slant- and flat-top boxes bring you fast, easy access.

These classic designs bring big storage capabilities to any jobsite. And they're packed with premium features and thoughtful details that make them easy to live with, year after year. Both styles bring you the features that set Greenlee storage products apart:

- Dual recessed and concealed lock protectors provide maximum security against drilling or cutting locks. They guard against lock corrosion, too.
- Heavy-duty gas springs make top opening easy.
- Continuous, non-removable-pin hinges to enhance security.
- Large, fold-down, recessed handles make relocation easy. Angled handle recess prevents pinched fingers.
- Channel reinforcements lock lid to side panels for enhanced security when closed.
- Angled support skids provide added support.
- Industrial, textured powder-coat finish to fight abrasion and corrosion.

Slant-Top Boxes

Greenlee slant-top boxes make access easy. These rugged performers also provide plenty of storage room and extra-sturdy construction.

- Double-hinged cover on Models 3648 and 3660 folds up and out of the way.
- Two reinforced steel shelves feature a large lip to prevent items from rolling off. Model 2260 has single shelf.
- Model 2260 features lid support to form a waist-high, flat work area.



NEW – Hinged lower shelf (except Model 3360) for easy storage of larger items.

Specifications

Cat. No.	UPC No.	Capacity		Front Height		Width		Depth		Back Height		Weight	
		Ft ³	m ³	in.	mm	in.	mm	in.	mm	in.	mm	lbs.	kg.
2260	23270	32	.90	22	559	60	1524	32	813	36	914	228	103
3648	23276	34	.96	36	914	48	1219	30	762	48	1219	273	124
3660	23196	44	1.23	36	914	60	1524	30	762	48	1219	282	128

Flat-Top Boxes

Need added storage capacity for tall, bulky items? That's just what you'll get with these rugged, flat-top designs.

- Double-hinged cover folds up and out of the way.
- Reinforced steel shelves feature a large lip to prevent items from rolling off.
- Convenient side-wall storage (except Model 3360).
- Model 4872R includes loading ramp for easy storage of larger, heavier items.



Specifications

Cat. No.	UPC No.	Capacity		Height		Width		Depth		Weight	
		Ft ³	m ³	in.	mm	in.	mm	in.	mm	lbs.	kg.
3360	38719	34.5	.98	33	838	60	1524	30	762	256	116
4848	35043	40	1.13	48	1219	48	1219	30	762	292	132
4860	35057	50	1.42	48	1219	60	1524	30	762	305	138
NEW! 4872	07487	60	1.7	48	1219	72	1829	30	762	360	163
NEW! 4872R	07488	60	1.7	48	1219	72	1829	30	762	375	170

Everything you'd want in rock-solid workbenches — plus mobility.

They're full-featured, mobile workbenches — bringing you solid work surfaces at just the right height, anywhere you need them. And they're also sturdy, secure, large-capacity storage boxes for all the tools you'll need. Naturally, they bring you the quality features you expect in Greenlee storage boxes, including:

- Recessed and concealed lock protector provides maximum security against drilling or cutting locks. Protects against lock corrosion, too.
- Flush-mounted doors resist forced entry and provide a professional appearance.
- Finger-groove door edges provide an easy grip for opening, anywhere along the height of the doors. There's convenient, front-door storage, too.
- Heavy-duty seven-gauge steel bottom.
- Two lockable, 6" swivel casters and two rigid casters for easy mobility.
- Industrial, textured powder-coat finish fights abrasion and corrosion.
- Continuous, non-removable-pin hinges to enhance security.



Mobile Workbenches

Our Standard Model 3548 features:

- Tough composition board work surface for impact resistance and extra rigidity.
- Provided with chain vice and telescoping wrench-stop to improve productivity.
- Reinforced shelves to handle plenty of weight.
- **NEW** – removable, self-stored shelf for storage of larger items.
- Angled handle recess prevents pinched fingers.



Our Deluxe Models 3842TD, 3842FD, 3848, and 3848SD feature:

- Adjustable shelves and drawers for customized storage arrangements.
- Sturdy push handle for easy mobility.

Customize to meet your exact needs.

Greenlee Mobile Workbenches (except Model 3548) feature 24 notch mounts on each side for shelves and drawers – so you can configure easily to your exact requirements. Just follow the table below to determine your combination of shelves and drawers. See replacement parts section for shelf and drawer information (page 16).



3548



3842FD – Four 5-1/2" drawers, one shelf.



3842TD – Two 5-1/2" drawers, two shelves.



3848 – Shell only, add accessory shelves and drawers for your own custom workbench.



3848SD – Two 2-1/2" drawers, two 4-1/2" drawers, two 5-1/2" drawers, two shelves.

Determining shelf and drawer configuration

Accessory	No. of notch mounts required
Shelf	2
2-1/2" drawer	3
4-1/2" drawer	5
5-1/2" drawer	6

Note: Total notch mounts cannot exceed 24.

Specifications

Cat. No.	UPC No.	Capacity		Height		Width		Depth		Weight	
		Ft ³	m ³	in.	mm	in.	mm	in.	mm	lbs.	kg.
3548	31229	23	.65	30	762	48	1219	24	610	257	117
NEW! 3842TD	08395	19	.5	30	762	42	1067	26	660	260	118
NEW! 3842FD	08397	19	.5	30	762	42	1067	26	660	260	118
NEW! 3848	08391	21.5	.6	30	762	48	1219	26	660	275	125
NEW! 3848SD	08393	21.5	.6	30	762	48	1219	26	660	275	125

Special storage for your special needs.

When you need a portable, weatherproof field office with really big storage capacity ... when you need big storage but space is tight ... when you need convenient bin storage ... or when you need to see the objects you're storing ... Greenlee can match your needs precisely.

As diverse as these specialized storage products are, they share these essential features with our boxes and chests:

- Flush doors look sharp – and they help enhance security.
- Heavy-duty continuous hinges include non-removable pins to stop thieves.
- Industrial, textured powder-coat finish for corrosion and abrasion resistance.

Deluxe Field Office

Put your shop wherever the work is with the Greenlee Deluxe Field Office. With over 100 cubic feet of space, it stores more tools, supplies, and blueprints. Yet it's easy to keep your tools organized, because the Deluxe Field Office has three separate storage areas – two smaller lower compartments for hand tools and supplies. And one large upper compartment for your big stuff.

- Weather stripping locks out wind, rain, and dust for superior protection of all contents.
- Sheltered work surface is slanted for comfortable ergonomics.
- Lid features heavy-duty gas spring and locking arm for easy opening and safety.
- Single-piece sidewall construction adds strength and durability.
- Greenlee's recessed lock protection prevents thieves from cutting or drilling locks. It guards against lock corrosion as well.
- Three support skids add strength – and provide the height you need for easy moving using a forklift. Want even more mobility? Just add our optional casters.



NEW – Sidewall storage compartments.



NEW – Recessed lock protectors (for upper and lower doors).



NEW – Slanted work surface with lockable, concealed storage area.



NEW – Grooved doors provide a comfortable, easy grip.

Specifications

Cat. No.	UPC No.	Capacity		Height		Width		Depth		Weight	
		Ft ³	m ³	in.	mm	in.	mm	in.	mm	lbs.	kg
8060 DLX	04719	116.5	3.3	80	2030	60	1525	42	1070	632	286


5060MESH

Mesh Job Box

For the maximum in indoor storage versatility, our mesh job box provides plenty of room for bulky items and 48 individual compartments for storing smaller tools and accessories.

- Built-in top corner supports enable storage of conduit and other bulky items.
- Built-in side platform gives you an ideal place to stash shovels, picks, brooms and other long-handled tools.
- Included casters (two swivel, two rigid) and sturdy handle make mobility easy.

Specifications

Cat. No.	UPC No.	Capacity		Height		Width		Depth		Weight	
		Ft ³	m ³	in.	mm	in.	mm	in.	mm	lbs.	kg
5060MESH	04460	36.8	1.0	54	1372	28	711	57	1448	401	182

Bi-Fold Utility Cabinet

If you need a lot of storage space – but don't have much room for it – this super-flexible cabinet is the perfect solution. It provides over 60 square feet of storage. And you couldn't ask for easier access to its generous shelf space.

- Four individual storage compartments on each side.
- Reinforced steel shelves are welded in place for added strength and durability. And all shelves feature large front lip to keep small items from rolling off.
- Each bi-fold section is mounted on four casters for easy opening and closing – and maximum stability.
- Includes six swivel and two rigid 4" (102 mm) casters for easy relocation.


5860

Specifications

Cat. No.	UPC No.	Capacity		Height		Width		Depth		Weight	
		Ft ³	m ³	in.	mm	in.	mm	in.	mm	lbs.	kg
5860	35068	60.4	1.7	58	1473	60	1524	30	762	548	249

Bulk Parts and Fitting Cabinet

With 18 separate compartments, this cabinet provides secure, convenient storage for your bulk parts.

- Convenient front-door storage.
- Reinforced, high-strength shelves.
- Three angled support skids enhance load capacity.



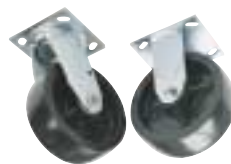
2072

Specifications

Cat. No.	UPC No.	Capacity		Height		Width		Depth		Weight	
		Ft ³	m ³	in.	mm	in.	mm	in.	mm	lbs.	kg
NEW! 2072	07484	40	1.1	48	1219	72	1829	20	508	406	184

Casters

These quality casters deliver high load capacities for easy mobility. And because they feature polyolefin wheels, they're stain resistant, non-marking and chemical resistant.



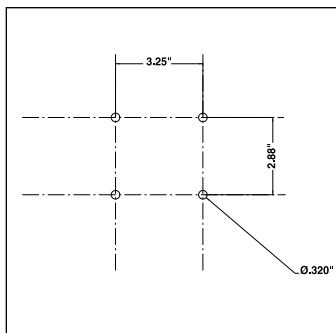
503/603



666/694



695



Caster bolt pattern is 2-7/8" x 3-1/4" (centerline to centerline).

Specifications

Cat. No.	UPC No.	Description	Wheel				Capacity per Wheel		Ship Weight	
			Diameter		Tread		lbs.	kg	lbs.	kg
			in.	mm	in.	mm				
503 ¹	28044	4 Swivel	6	152	2	51	500	227	22	10
603 ¹	23405	2 Rigid, 2 Swivel	6	152	2	51	500	227	20	9
703 ²	08420	2 Rigid, 2 Locking Swivel (3548, 3842, 3848, 5860 only)	6	152	2	51	500	227	20	9
803 ²	08414	4 Locking Swivel (5860 only)	6	152	2	51	500	227	20	9
666 ¹	15341	2 Rigid, 2 Swivel	4	102	2	51	400	181	13	6
695 ¹	30239	2 Rigid, 2 Swivel	4	102	2	51	375	170	10	5
694 ¹	35113	4 Swivel	4	102	2	51	400	181	13	6

¹ Each caster set includes (16) 3/8-16 x 1" self-threading mounting screws; (16) 3/8" lock washers.

² Each caster set includes (16) 3/8-16 x 1" carriage bolts; (16) 3/8-16 hex nuts; (16) 3/8" lock washers.

Accessories

Replacement Parts

Cat. No.	UPC No.	Description
06291	06291	Box Caster Bolt Set (16-Bolt Kit)
08426	08426	Box Caster Bolt Set (16-Bolt Kit, 3548, 3842, 3848, 5860 only)
35438	35438	Lid Support Kit – (R) and (L) Locking Arms (1332, 1636, 2142)
27472	27472	Lid Support – (L) Side (2448, 3048, 2460, 2472, 2260)
27471	27471	Lid Support – (R) Side (2448, 3048, 2460, 2472, 2260)
08428	08428	10 mm Gas Spring Ball Stud Replacement Kit (all Slant/Flat-Tops)
53904	53904	Gas Springs for 3360, 3660, 4848, 4860, 4872 and 4872R Storage Boxes
53951	53951	Gas Springs for 3648 Storage Box
04339	04339	Latch Repair Kit (5860)
54997	54997	Latch (5860)
54998	54998	Strike (5860)
55124	55124	Latch Threaded Rod (5860)
08427	08427	13 mm Gas Spring Ball Stud Replacement Kit (8060 DLX)
08411	08411	2-1/2" Replacement Drawer – includes drawer and two slides (3848)
08412	08412	4-1/2" Replacement Drawer – includes drawer and two slides (3848)
08413	08413	5-1/2" Replacement Drawer – includes drawer and two slides (3848)
08410	08410	Shelf (3848)
08421	08421	2-1/2" Replacement Drawer – includes drawer and two slides (3842)
08422	08422	4-1/2" Replacement Drawer – includes drawer and two slides (3842)
08423	08423	5-1/2" Replacement Drawer – includes drawer and two slides (3842)
10083	10083	Replacement drawer slide set
08419	08419	Shelf (3842)