



ALL RIGHTS RESERVED. NO PORTION OF THIS PUBLICATION, WHETHER IN WHOLE OR IN PART, CAN BE REPRODUCED WITHOUT THE EXPRESS WRITTEN CONSENT OF SPC TECHNOLOGY.

SPC-F005.DWG

REVISIONS

DOC. NO. SPC-F005 • Effective: 7/8/02 • DCP No: 1398

DCP #	REV	DESCRIPTION	DRAWN	DATE	CHECKD	DATE	APPRVD	DATE
1262	A	RELEASED	HO	2/4/03	JWM	2/5/03	DJC	2/5/03

**Description:**

The 78L15 is a positive 3-terminal voltage regulator in a TO-92 type package. With adequate heat sinking this device can deliver up to 100mA output current. Current limiting is included to limit peak output current to a safe value. Safe area protection for the output transistors is provided to limit internal power dissipation. If internal power dissipation becomes too high for the heat sinking provided, the thermal shutdown circuit takes over preventing the IC from overheating. When used as a zener diode/resistor combination replacement, this device usually results in an effective output impedance improvement of two orders of magnitude, and lower quiescent current. Typical applications include use in logic systems, instrumentation, Hi-Fi, and other solid state electronic equipment. Although designed primarily as a fixed voltage regulator, this device can be used with external components to obtain adjustment voltages and currents.

**Features:**

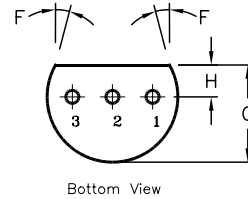
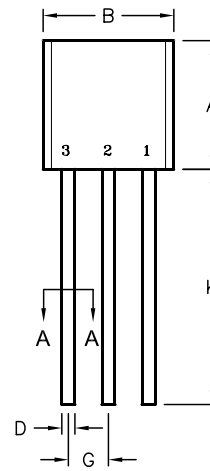
- Output Voltage Tolerances of  $\pm 5\%$  Over the Temperature Range
- Output Current of 100mA
- Internal Thermal Overload Protection
- Internal Short-Circuit Current Limiting
- Output Transistor Safe-Area Compensation

**Absolute Maximum Ratings:**

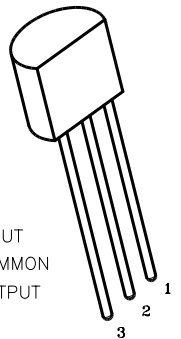
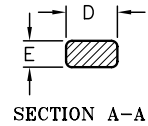
- Input Voltage,  $V_{IN} = 35V$
- Internal Power Dissipation (Note 1),  $P_D =$  Internally Limited
- Operating Junction Temperature Range,  $T_{opr} = 0^\circ C$  to  $+70^\circ C$
- Maximum Junction Temperature,  $T_J = +125^\circ C$
- Storage Temperature Range,  $T_{stg} = -55^\circ C$  to  $+150^\circ C$
- Lead Temperature (During soldering, 10sec.),  $T_L = +230^\circ C$

Note 1. Thermal resistance is typical  $+60^\circ C/W$  junction-to-case,  $+232^\circ C/W$  junction-to-ambient, and  $+88^\circ C/W$  junction-to-ambient at 400ft min of air. The maximum junction temperature shall not exceed  $+125^\circ C$  on electrical parameters.

TO-92



DIM.	MIN.	MAX.
A	4.32	5.33
B	4.45	5.20
C	3.18	4.19
D	0.41	0.55
E	0.35	0.50
F	5°	
G	1.14	1.40
H	1.14	1.53
K	12.70	-



- 1 INPUT
- 2 COMMON
- 3 OUTPUT

DISCLAIMER: ALL STATEMENTS AND TECHNICAL INFORMATION CONTAINED HEREIN ARE BASED UPON INFORMATION AND/OR TESTS WE BELIEVE TO BE ACCURATE AND RELIABLE. SINCE CONDITIONS OF USE ARE BEYOND OUR CONTROL, THE USER SHALL DETERMINE THE SUITABILITY OF THE PRODUCT FOR THE INTENDED USE AND ASSUME ALL RISK AND LIABILITY WHATSOEVER IN CONNECTION THEREWITH.

TOLERANCES:

UNLESS OTHERWISE SPECIFIED, DIMENSIONS ARE FOR REFERENCE PURPOSES ONLY.

DRAWN BY:	DATE:
HISHAM ODISH	2/4/03
CHECKED BY:	DATE:
JEFF MCVICKER	2/5/03
APPROVED BY:	DATE:
DANIEL CAREY	2/5/03

DRAWING TITLE:			
TRANSISTOR, VOLTAGE REGULATOR, TO-92, POSITIVE			
SIZE	DWG. NO.	ELECTRONIC FILE	REV
A	78L15	35C0951.DWG	A
SCALE:	U.O.M.:	SHEET:	
NTS	MILLIMETERS	1 OF 2	

**Electrical Characteristics:**(V<sub>OUT</sub> = 15V, V<sub>IN</sub> = 23V, I<sub>O</sub> = 40mA, C<sub>IN</sub> = 0.33μF, C<sub>OUT</sub> = 0.1μF, Note 2 unless otherwise specified)

Parameter	Symbol	Test Conditions	Min	Typ	Max	Units
Output Voltage, Note 4	V <sub>O</sub>	T <sub>J</sub> = +25°C	14.4	15	15.6	V
		1mA ≤ I <sub>O</sub> ≤ 70mA, 17.5V ≤ V <sub>IN</sub> ≤ 30V	14.25	15	15.75	V
Line Regulation (T <sub>J</sub> = +25°C)	Reg <sub>line</sub>	17.5V ≤ V <sub>IN</sub> ≤ 30V	–	37	250	mV
		20V ≤ V <sub>IN</sub> ≤ 30V	–	25	140	mV
Load Regulation (T <sub>J</sub> = +25°C)	Reg <sub>load</sub>	1mA ≤ I <sub>O</sub> ≤ 100mA	–	35	150	mV
		1mA ≤ I <sub>O</sub> ≤ 40mA	–	12	75	mV
Quiescent Current	I <sub>B</sub>	T <sub>J</sub> = +25°C	–	3.1	5	mA
		T <sub>J</sub> = +125°C	–	–	4.7	mA
Quiescent Current Change	I <sub>B</sub>	With line, 20V ≤ V <sub>IN</sub> ≤ 30V	–	–	1	mA
		With load, 1mA ≤ I <sub>O</sub> ≤ 40mA	–	–	0.1	mA
Output Noise Voltage	V <sub>N</sub>	T <sub>J</sub> = +25°C, f = 10Hz to 10kHz, Note 3	–	90	–	μV
Ripple Rejection	RR	18.5V ≤ V <sub>IN</sub> ≤ 28.5V, f = 120Hz	37	51	–	dB
Input Voltage Required to Maintain Line Regulation	TCV <sub>O</sub>	T <sub>J</sub> = +25°C	17.5	–	–	V

Note 2. The maximum steady state usable output current and input voltage are very dependent on the heat sinking and/or lead length of the package. The data above represents pulse test conditions with junction temperatures as indicated at the initiation of the test.

Note 3. Recommended minimum load capacitance of 0.01μF to limit high frequency noise bandwidth.

Note 4. The temperature coefficient of V<sub>OUT</sub> is typically within ±0.01% V<sub>O</sub>/°C.

ALL RIGHTS RESERVED. NO PORTION OF THIS PUBLICATION, WHETHER IN WHOLE OR IN PART CAN BE REPRODUCED WITHOUT THE EXPRESS WRITTEN CONSENT OF SPC TECHNOLOGY.

SIZE DWG. NO.

A

78L15

ELECTRONIC FILE

35C0951.DWG

REV

A

SPC-F005.DWG

DOC. NO. SPC-F005 \* Effective: 7/8/02 \* DCP No: 1398

SCALE: NTS

U.O.M.: MILLIMETERS

SHEET: 2 OF 2