

## ADM811/ADM812

### FEATURES

- Superior Upgrade for MAX811/MAX812
- Specified over Temperature
- Low Power Consumption (5  $\mu$ A Typ)
- Precision Voltage Monitor: 2.5 V, 3 V, 3.3 V, 5 V Options
- Reset Assertion Down to 1 V  $V_{CC}$
- 140 ms Min Power-On Reset
  - Logic Low RESET Output (ADM811)
  - Logic High RESET Output (ADM812)
- Built-In Manual Reset

### APPLICATIONS

- Microprocessor Systems
- Controllers
- Intelligent Instruments
- Automotive Systems
- Safety Systems
- Portable Instruments

### GENERAL DESCRIPTION

The ADM811/ADM812 is a reliable voltage monitoring device suitable for use in most voltage monitoring applications. The ADM811/ADM812 is designed to monitor six different voltages, each allowing for a 5% or 10% degradation of standard PSU voltages before a reset occurs. These voltages have been selected for the effective monitoring of 2.5 V, 3 V, 3.3 V, and 5 V supply voltage levels.

Included in this circuit is a debounced manual reset input. Reset can be activated using an electrical switch (or an input from another digital device) or by a degradation of the supply voltage. The manual reset function is very useful, especially if the circuit in which the ADM811/ADM812 is operating enters into a state that can only be detected by the user. Allowing the user to reset a system manually can reduce the damage or danger that could otherwise be caused by an out-of-control or locked system.

### FUNCTIONAL BLOCK DIAGRAM

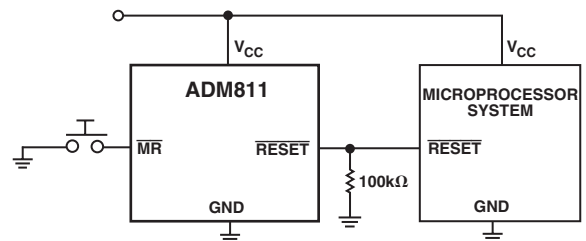
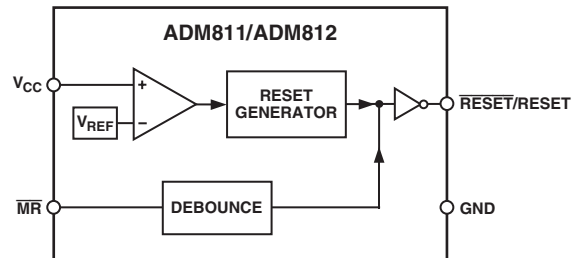


Figure 1. Typical ADM811 Operating Circuit

REV. C

Information furnished by Analog Devices is believed to be accurate and reliable. However, no responsibility is assumed by Analog Devices for its use, nor for any infringements of patents or other rights of third parties that may result from its use. No license is granted by implication or otherwise under any patent or patent rights of Analog Devices. Trademarks and registered trademarks are the property of their respective companies.

One Technology Way, P.O. Box 9106, Norwood, MA 02062-9106, U.S.A.  
 Tel: 781/329-4700 [www.analog.com](http://www.analog.com)  
 Fax: 781/326-8703 © 2003 Analog Devices, Inc. All rights reserved.

# ADM811/ADM812—SPECIFICATIONS ( $V_{CC}$ = Full Operating Range; $T_A = T_{MIN}$ to $T_{MAX}$ ; $V_{CC}$ typ = 5 V for L/M, 3.3 V for T/S, 3 V for R, 2.5 V for Z Models; unless otherwise noted.)

Parameter	Min	Typ	Max	Unit	Test Conditions/Comments
<b>SUPPLY</b>					
Voltage	1.0		5.5	V	$T_A = 0^\circ\text{C}$ to $70^\circ\text{C}$
	1.2			V	$T_A = -40^\circ\text{C}$ to $+85^\circ\text{C}$
Current		8	15	$\mu\text{A}$	$V_{CC} < 5.5\text{ V}$ , ADM81_L/M, $I_{OUT} = 0\text{ mA}$
		5	10	$\mu\text{A}$	$V_{CC} < 3.6\text{ V}$ , ADM81_R/S/T/Z, $I_{OUT} = 0\text{ mA}$
<b>RESET VOLTAGE THRESHOLD</b>					
ADM81_L	4.54	4.63	4.72	V	$T_A = 25^\circ\text{C}$
ADM81_L	4.50		4.75	V	$T_A = -40^\circ\text{C}$ to $+85^\circ\text{C}$
ADM81_M	4.30	4.38	4.46	V	$T_A = 25^\circ\text{C}$
ADM81_M	4.25		4.50	V	$T_A = -40^\circ\text{C}$ to $+85^\circ\text{C}$
ADM81_T	3.03	3.08	3.14	V	$T_A = 25^\circ\text{C}$
ADM81_T	3.00		3.15	V	$T_A = -40^\circ\text{C}$ to $+85^\circ\text{C}$
ADM81_S	2.88	2.93	2.98	V	$T_A = 25^\circ\text{C}$
ADM81_S	2.85		3.00	V	$T_A = -40^\circ\text{C}$ to $+85^\circ\text{C}$
ADM81_R	2.58	2.63	2.68	V	$T_A = 25^\circ\text{C}$
ADM81_R	2.55		2.70	V	$T_A = -40^\circ\text{C}$ to $+85^\circ\text{C}$
ADM81_Z	2.28	2.32	2.35	V	$T_A = 25^\circ\text{C}$
ADM81_Z	2.25		2.38	V	$T_A = -40^\circ\text{C}$ to $+85^\circ\text{C}$
<b>RESET THRESHOLD TEMPERATURE COEFFICIENT</b>					
		30		ppm/ $^\circ\text{C}$	
<b><math>V_{CC}</math> TO RESET/<math>\overline{\text{RESET}}</math> DELAY</b>					
		40		$\mu\text{s}$	$V_{OD} = 125\text{ mV}$ , ADM81_L/M
		20		$\mu\text{s}$	$V_{OD} = 125\text{ mV}$ , ADM81_R/S/T/Z
<b>RESET ACTIVE TIMEOUT PERIOD</b>					
	140		560	ms	$V_{CC} = V_{TH(MAX)}$
	300		700	ms	(ADM811-3T Only)
<b>MANUAL RESET</b>					
Minimum Pulsewidth	10			$\mu\text{s}$	
Glitch Immunity		100		ns	
RESET/ $\overline{\text{RESET}}$ Propagation Delay		0.5		$\mu\text{s}$	
Pull-Up Resistance	10	20	30	k $\Omega$	
The Manual Reset Circuit Will Act On:					
An Input Rising Above	2.3			V	$V_{CC} > V_{TH(MAX)}$ , ADM81_L/M
An Input Falling Below			0.8	V	$V_{CC} > V_{TH(MAX)}$ , ADM81_L/M
An Input Rising Above	$0.7 \times V_{CC}$			V	$V_{CC} > V_{TH(MAX)}$ , ADM81_R/S/T/Z
An Input Falling Below			$0.25 \times V_{CC}$	V	$V_{CC} > V_{TH(MAX)}$ , ADM81_R/S/T/Z
<b>RESET/<math>\overline{\text{RESET}}</math> Output Voltage</b>					
Low (ADM812R/S/T/Z)			0.3	V	$V_{CC} = V_{TH(MAX)}$ , $I_{SINK} = 1.2\text{ mA}$
Low (ADM812L/M)			0.4	V	$V_{CC} = V_{TH(MAX)}$ , $I_{SINK} = 3.2\text{ mA}$
High (ADM812R/S/T/Z/L/M)	$0.8 \times V_{CC}$			V	$1.8\text{ V} < V_{CC} < V_{TH(MIN)}$ , $I_{SOURCE} = 150\text{ }\mu\text{A}$
Low (ADM811R/S/T/Z)			0.3	V	$V_{CC} = V_{TH(MIN)}$ , $I_{SINK} = 1.2\text{ mA}$
Low (ADM811L/M)			0.4	V	$V_{CC} = V_{TH(MIN)}$ , $I_{SINK} = 3.2\text{ mA}$
Low (ADM811R/S/T/Z/L/M)			0.3	V	$V_{CC} > 1.0\text{ V}$ , $I_{SINK} = 50\text{ }\mu\text{A}$
High (ADM811R/S/T/Z)	$0.8 \times V_{CC}$			V	$V_{CC} > V_{TH(MAX)}$ , $I_{SOURCE} = 500\text{ }\mu\text{A}$
High (ADM811L/M)	$V_{CC} - 1.5$			V	$V_{CC} > V_{TH(MAX)}$ , $I_{SOURCE} = 800\text{ }\mu\text{A}$

Specifications subject to change without notice.

## ABSOLUTE MAXIMUM RATINGS\*

(Typical values are at  $T_A = 25^\circ\text{C}$ , unless otherwise noted.)

Terminal Voltage (With Respect to Ground)

$V_{CC}$  ..... -0.3 V to +6 V

All Other Inputs ..... -0.3 V to  $V_{CC} + 0.3$  V

Input Current

$V_{CC}$  ..... 20 mA

$\overline{MR}$  ..... 20 mA

Output Current

$\overline{RESET}$  ..... 20 mA

Power Dissipation ( $T_A = 70^\circ\text{C}$ )

RT-4, (SOT-143) ..... 200 mW

Derate by 4 mW/ $^\circ\text{C}$  above  $70^\circ\text{C}$

$\theta_{JA}$  Thermal Impedance .....  $330^\circ\text{C}/\text{W}$

Operating Temperature Range .....  $-40^\circ\text{C}$  to  $+85^\circ\text{C}$

Storage Temperature Range .....  $-65^\circ\text{C}$  to  $+160^\circ\text{C}$

Lead Temperature (Soldering, 10 sec) .....  $300^\circ\text{C}$

Vapor Phase (60 sec) .....  $215^\circ\text{C}$

Infrared (15 secs) .....  $220^\circ\text{C}$

ESD Rating ..... 3 kV

\*Stresses above those listed under Absolute Maximum Ratings may cause permanent damage to the device. This is a stress rating only; functional operation of the device at these or any other conditions above those listed in the operational sections of this specification is not implied. Exposure to absolute maximum ratings for extended periods of time may affect device reliability.

## ORDERING GUIDE

Model*	Reset Threshold (V)	Temperature Range	Branding Information	Quantity (K)
ADM811LART-REEL	4.63	$-40^\circ\text{C}$ to $+85^\circ\text{C}$	MBV	10
ADM811LART-REEL-7	4.63	$-40^\circ\text{C}$ to $+85^\circ\text{C}$	MBV	3
ADM811MART-REEL	4.38	$-40^\circ\text{C}$ to $+85^\circ\text{C}$	MBT	10
ADM811MART-REEL-7	4.38	$-40^\circ\text{C}$ to $+85^\circ\text{C}$	MBT	3
ADM811TART-REEL	3.08	$-40^\circ\text{C}$ to $+85^\circ\text{C}$	MBG	10
ADM811TART-REEL-7	3.08	$-40^\circ\text{C}$ to $+85^\circ\text{C}$	MBG	3
ADM811-3TART-REEL	3.08	$-40^\circ\text{C}$ to $+85^\circ\text{C}$	MB3	10
ADM811-3TART-REEL-7	3.08	$-40^\circ\text{C}$ to $+85^\circ\text{C}$	MB3	3
ADM811SART-REEL	2.93	$-40^\circ\text{C}$ to $+85^\circ\text{C}$	MBE	10
ADM811SART-REEL-7	2.93	$-40^\circ\text{C}$ to $+85^\circ\text{C}$	MBE	3
ADM811RART-REEL	2.63	$-40^\circ\text{C}$ to $+85^\circ\text{C}$	MBB	10
ADM811RART-REEL-7	2.63	$-40^\circ\text{C}$ to $+85^\circ\text{C}$	MBB	3
ADM811ZART-REEL	2.32	$-40^\circ\text{C}$ to $+85^\circ\text{C}$	MBZ	10
ADM811ZART-REEL-7	2.32	$-40^\circ\text{C}$ to $+85^\circ\text{C}$	MBZ	3
ADM812LART-REEL	4.63	$-40^\circ\text{C}$ to $+85^\circ\text{C}$	MCV	10
ADM812LART-REEL-7	4.63	$-40^\circ\text{C}$ to $+85^\circ\text{C}$	MCV	3
ADM812MART-REEL	4.38	$-40^\circ\text{C}$ to $+85^\circ\text{C}$	MCT	10
ADM812MART-REEL-7	4.38	$-40^\circ\text{C}$ to $+85^\circ\text{C}$	MCT	3
ADM812TART-REEL	3.08	$-40^\circ\text{C}$ to $+85^\circ\text{C}$	MCG	10
ADM812TART-REEL-7	3.08	$-40^\circ\text{C}$ to $+85^\circ\text{C}$	MCG	3
ADM812SART-REEL	2.93	$-40^\circ\text{C}$ to $+85^\circ\text{C}$	MCE	10
ADM812SART-REEL-7	2.93	$-40^\circ\text{C}$ to $+85^\circ\text{C}$	MCE	3
ADM812RART-REEL	2.63	$-40^\circ\text{C}$ to $+85^\circ\text{C}$	MCB	10
ADM812RART-REEL-7	2.63	$-40^\circ\text{C}$ to $+85^\circ\text{C}$	MCB	3
ADM812ZART-REEL	2.32	$-40^\circ\text{C}$ to $+85^\circ\text{C}$	MCZ	10
ADM812ZART-REEL-7	2.32	$-40^\circ\text{C}$ to $+85^\circ\text{C}$	MCZ	3

\*Only available in reels.

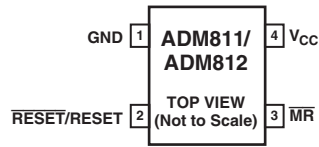
## CAUTION

ESD (electrostatic discharge) sensitive device. Electrostatic charges as high as 4000 V readily accumulate on the human body and test equipment and can discharge without detection. Although the ADM811/ADM812 feature proprietary ESD protection circuitry, permanent damage may occur on devices subjected to high energy electrostatic discharges. Therefore, proper ESD precautions are recommended to avoid performance degradation or loss of functionality.



# ADM811/ADM812

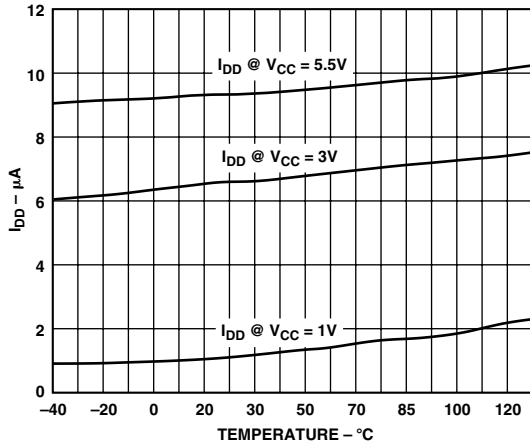
## PIN CONFIGURATION



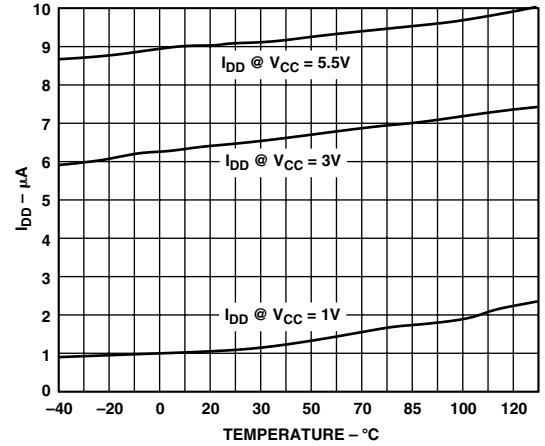
## PIN FUNCTION DESCRIPTIONS

Pin	Mnemonic	Function
1	GND	0 V. Ground reference for all signals.
2	$\overline{\text{RESET}}$ (ADM811) RESET (ADM812)	Active Low Logic Output. $\overline{\text{RESET}}$ remains low while $V_{CC}$ is below the reset threshold or when $\overline{\text{MR}}$ is low; $\overline{\text{RESET}}$ then remains low for at least 140 ms (at least 300 ms for the ADM811-3T) after $V_{CC}$ rises above the reset threshold. Active High Logic Output. RESET remains high while $V_{CC}$ is below the reset threshold or when $\overline{\text{MR}}$ is low; RESET then remains high for 240 ms (typical) after $V_{CC}$ rises above the reset threshold.
3	$\overline{\text{MR}}$	Manual Reset. This active low debounced input will ignore input pulses of 100 ns or less (typical) and is guaranteed to accept input pulses of greater than 10 $\mu\text{s}$ . Leave floating when not used.
4	$V_{CC}$	2.5 V, 3 V, 3.3 V, or 5 V Monitored Supply Voltage.

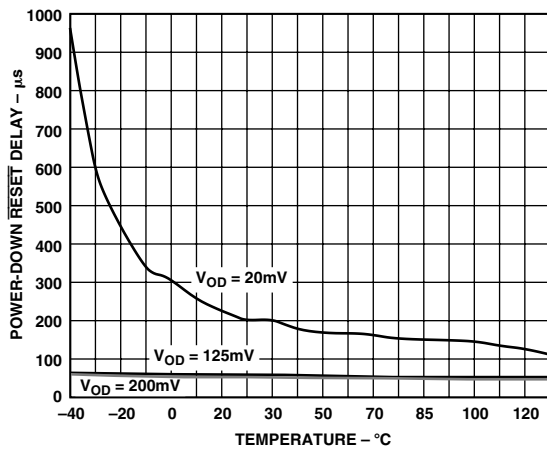
# Typical Performance Characteristics—ADM811/ADM812



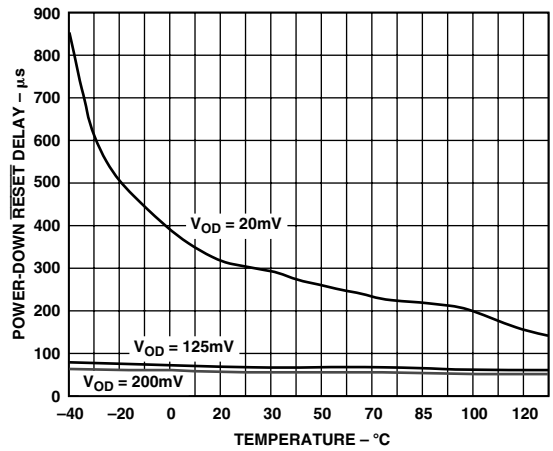
TPC 1. Supply Current vs. Temperature (ADM81\_R/S/T/Z)



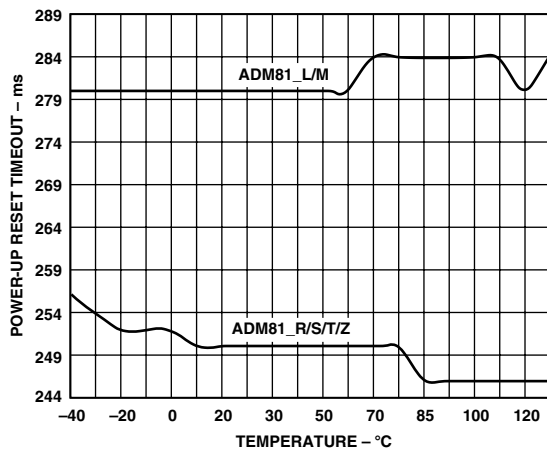
TPC 4. Supply Current vs. Temperature (ADM81\_L/M)



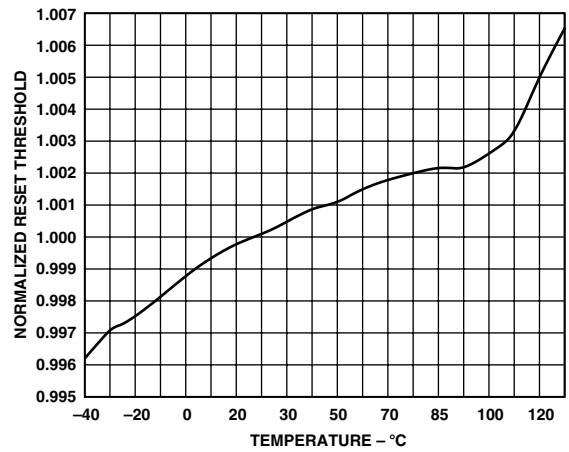
TPC 2. Power-Down  $\overline{RESET}$  Delay vs. Temperature (ADM81\_R/S/T/Z)



TPC 5. Power-Down  $\overline{RESET}$  Delay vs. Temperature (ADM81\_L/M)



TPC 3. Power-Up Reset Timeout vs. Temperature



TPC 6. Reset Threshold Deviation vs. Temperature

# ADM811/ADM812

## CIRCUIT INFORMATION

### Reset Thresholds

A reset output is provided to the microprocessor whenever the  $V_{CC}$  input is below the reset threshold. The actual reset threshold is dependent on whether an L, M, T, S, R, or Z suffix is used. Refer to Table I.

Table I. Reset Threshold Options

Model	Reset Threshold (V)
ADM811LART	4.63
ADM811MART	4.38
ADM811TART	3.08
ADM811-3TART	3.08
ADM811SART	2.93
ADM811RART	2.63
ADM811ZART	2.32
ADM812LART	4.63
ADM812MART	4.38
ADM812TART	3.08
ADM812SART	2.93
ADM812RART	2.63
ADM812ZART	2.32

### RESET OUTPUT

On power-up and after  $V_{CC}$  rises above the reset threshold, an internal timer holds the reset output active for 240 ms (typical). This is intended as a power-on reset signal for the processor. It allows time for both the power supply and the microprocessor to stabilize after power-up. If a power supply brownout or interruption occurs, the reset output is similarly activated and remains active for 240 ms (typical) after the supply recovers. This allows time for the power supply and microprocessor to stabilize.

The ADM811 provides an active low reset output ( $\overline{\text{RESET}}$ ) while the ADM812 provides an active high output (RESET).

During power-down of the ADM811, the  $\overline{\text{RESET}}$  output remains valid (low) with  $V_{CC}$  as low as 1 V. This ensures that the microprocessor is held in a stable shutdown condition as the supply falls and also ensures that no spurious activity can occur via the microprocessor as it powers up.

### MANUAL RESET

The ADM811/ADM812 is equipped with a manual reset input. This input is designed to operate in a noisy environment where unwanted glitches could be induced. These glitches could be produced by the bouncing action of a switch contact, or where a manual reset switch may be located some distance away from the circuit (the cabling of which may pick-up noise).

The manual reset input is guaranteed to ignore logically valid inputs that are faster than 100 ns and to accept inputs longer in duration than 10  $\mu$ s.

### Glitch Immunity

The ADM811/ADM812 contains internal filtering circuitry providing glitch immunity from fast transient glitches on the power supply line.

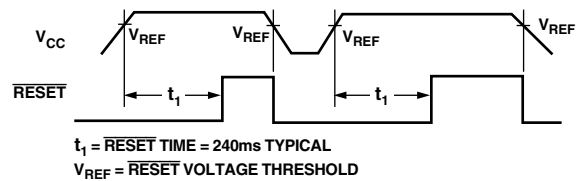


Figure 2. Power Fail  $\overline{\text{RESET}}$  Timing

## INTERFACING TO OTHER DEVICES

### Output

The ADM811/ADM812 is designed to integrate with as many devices as possible. One feature of the ADM811/ADM812 is the reset output, which is directly proportional to  $V_{CC}$  (this is guaranteed only while  $V_{CC}$  is greater than 1 V). This enables the part to be used with both 3 V and 5 V, or any nominal voltage within the minimum and maximum specifications for  $V_{CC}$ .

### BENEFITS OF A VERY ACCURATE RESET THRESHOLD

Because the ADM811/ADM812 can operate effectively even when there are large degradations of the supply voltages, the possibility of a malfunction during a power failure is greatly reduced. Another advantage of the ADM811/ADM812 is its very accurate internal voltage reference circuit. Combined, these benefits produce an exceptionally reliable microprocessor supervisory circuit.

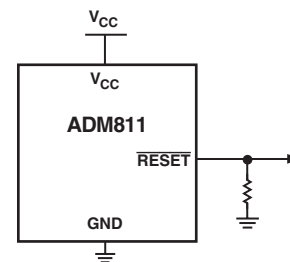


Figure 3. Ensuring a Valid  $\overline{\text{RESET}}$  Output Down to  $V_{CC} = 0$  V

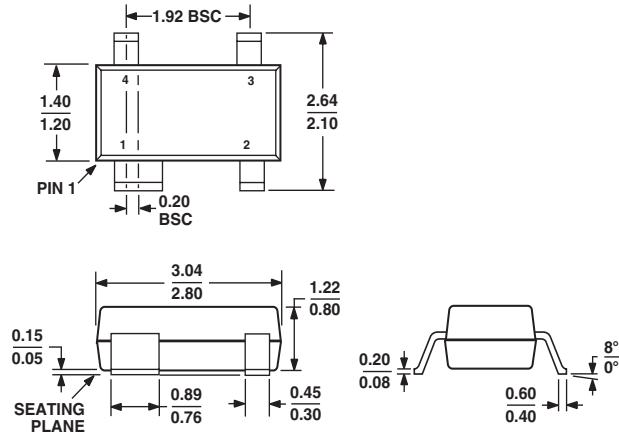
### ENSURING A VALID RESET OUTPUT DOWN TO $V_{CC} = 0$ V

When  $V_{CC}$  falls below 0.8 V, the ADM811/ADM812's  $\overline{\text{RESET}}$  no longer sinks current. Therefore, a high impedance CMOS logic input connected to  $\overline{\text{RESET}}$  may drift to undetermined logic levels. To eliminate this problem, a 100 k $\Omega$  resistor should be connected from  $\overline{\text{RESET}}$  to ground.

OUTLINE DIMENSIONS

4-Lead Small Outline Transistor Package [SOT-143]  
(RT-4)

Dimensions shown in millimeters



COMPLIANT TO JEDEC STANDARDS TO-253D

# ADM811/ADM812

## Revision History

Location	Page
<b>2/03—Data Sheet changed from REV. B to REV. C.</b>	
Changes FEATURES .....	1
Changes to GENERAL DESCRIPTION .....	1
Changes to SPECIFICATIONS .....	2
Removed Note 2 from ORDERING GUIDE .....	3
Changes to PIN FUNCTION DESCRIPTIONS .....	4
Removed Note from Table I .....	6
<b>1/03—Data Sheet changed from REV. A to REV. B.</b>	
Added ADM812 .....	Universal
Changes SPECIFICATIONS .....	2
Changes to ORDERING GUIDE .....	3
Changes to PIN CONFIGURATION .....	4
Changes to PIN FUNCTION DESCRIPTIONS .....	4
Additions to Table I .....	6
Changes to Manual Reset section .....	6
<b>5/02—Data Sheet changed from REV. 0 to REV. A.</b>	
Deletion of ADM812 .....	Universal

C00092-0-2/03(C)

PRINTED IN U.S.A.