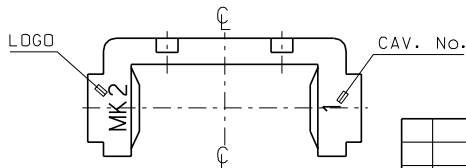
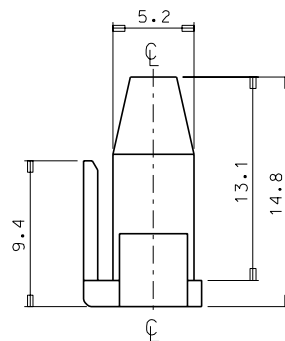
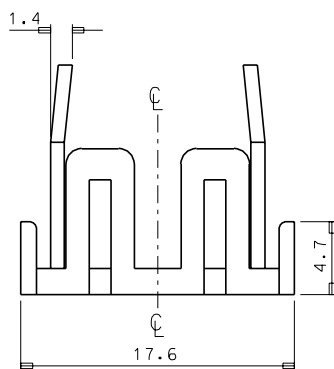
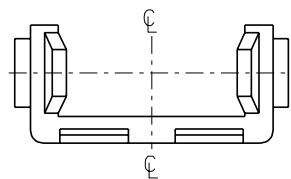
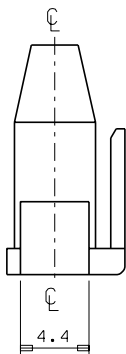


PROJECT NO. SIMILAR ITEM EDP NO. ENG. NO. SD 35965-029*



- NOTES
1. MATERIAL : NYLON 66 (UL94V-2)
 2. COLOR : 35965-0290 (NATURAL)
35965-0292 (RED)
35965-0293 (YELLOW)
35965-0294 (BLUE)
 3. MATCHED HOUSING : 35965-020*
35965-021*

				MATERIAL		molex MOLEX-KOREA CO.,LTD.	
				SEE NOTES			
				GENERAL TOLERANCE		DRAWN BY J.S.KANG	
				DIMENSION : ± 0.3		CHK'D BY	
				ANGLE : $\pm 1^\circ$			
				DIMENSION CLASSIFICATION		APP'D BY	
				▽ : CRITICAL () : REFERENCE		SCALE 4/1	
A NEW RELEASED		96	12.12	ASS'Y PART		TITLE; .070 MULTI FEMALE	
LTR REVISION RECORD		ECN	DATE	DESCRIPTION ENG. NO.		HOUSING T.P.A-2P	
REVISE ONLY ON CAD SYSTEM				— — —		ENG. NO. SD 35965-029*	
				— — —		REV A	