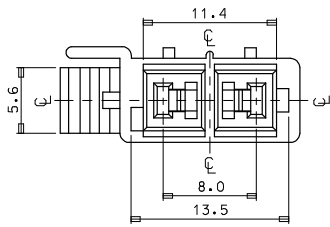
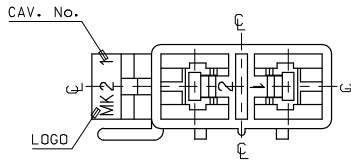


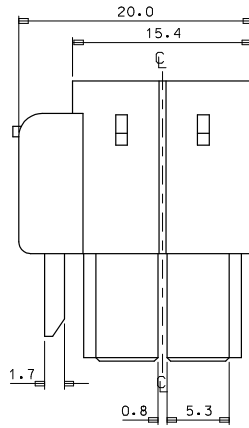
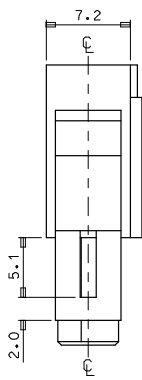
10 9 8 7 6 5 4 3 2 1



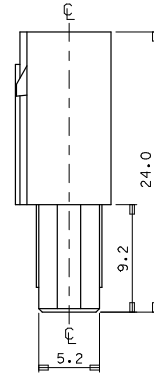
VIEW "A"



- NOTES
1. MATERIAL & COLOR: SEE TABLE
 2. MATCHED HOUSING : 35180-040*
35180-060*
 3. APPLICABLE TERMINAL : 35746-0*10
 4. APPLICABLE T.P.A : 35965-029*



"A" ↑



No.	PRODUCT			MATERIAL
	PART NO	MATERIAL	COLOR	DESCRIPTION
1	35965-0200	359650200	NATURAL	PBT (UL 94V-0)
2	35965-0202	359650202	RED	
3	35965-0203	359650203	YELLOW	
4	35965-0204	359650204	BLUE	
5	35965-9200	359659200	NATURAL	PBT/PC (UL 94V-0)
6	35965-9202	359659202	RED	
7	35965-9203	359659203	YELLOW	
8	35965-9204	359659204	BLUE	

EC NO: KOR2008-0101 DRWN: HPARK01 2007/12/11 CHK: CHYKHY YANG 2007/12/14 APPR: YUNSIKKIM 2007/12/14	QUALITY SYMBOLS 	GENERAL TOLERANCES (UNLESS SPECIFIED)		DIMENSION STYLE MM ONLY	SCALE 3:1	DESIGN UNITS METRIC	THIRD ANGLE PROJECTION
		4 PLACES ± --- ± --- 3 PLACES ± --- ± --- 2 PLACES ± --- ± --- 1 PLACE ± 0.3 ± --- ANGULAR ± 1°	DRAWN BY JS. KANG	DATE	TITLE 070 MULTI FEMAL HSG 2P		
DRAFT WHERE APPLICABLE MUST REMAIN WITHIN DIMENSIONS	CHECKED BY	DATE	APPROVED BY	DATE	MATERIAL NO.	DOCUMENT NO. SD-35965-020*	SHEET NO. 1 OF 1
SIZE A3				THIS DRAWING CONTAINS INFORMATION THAT IS PROPRIETARY TO MOLEX INCORPORATED AND SHOULD NOT BE USED WITHOUT WRITTEN PERMISSION			

9 8 7 6 5 4 3 2 1