

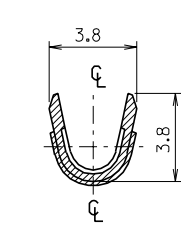
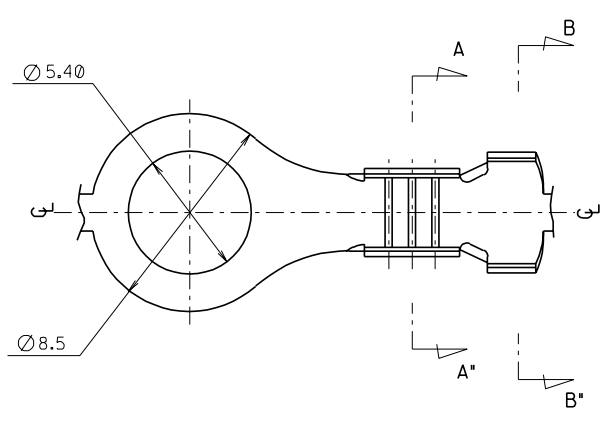
DO NOT SCALE DRAWING DIMENSION IN METRIC

PROJECT NO.

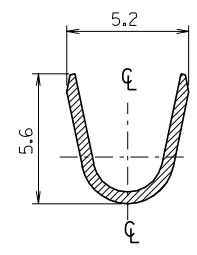
SIMILAR ITEM

EDP NO.

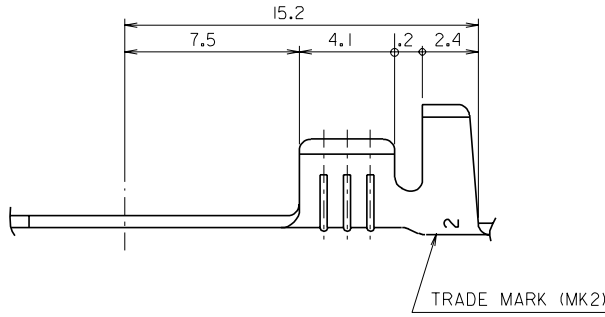
ENG. NO. SD_35750-12*0



SECTION:A-A'



SECTION:B-B'



NOTES

1. MATERIAL: BRASS 0.5 THK'
2. FINISH: 35750-1200: NONE
35750-1210: POST-TIN PLATING
35723-1004: TIN LEAD PLATING
3. RECOMMENDED LENGTH OF WIRE STRIP IS 5.4-6.0

ASS'Y PART		QTY/REEL OR PACK	SURFACE AREA	MATERIAL	SEE NOTE	WIRE RANGE	GENERAL TOLERANCES	MOLEX MOLEX-KOREA CO.,LTD.								
DESCRIPTION	ENG. NO.	5,000 Q'TY /REEL	MM ²			AWG: #18-#14	DIM. : ±0.3 ANGLE : ±0.2									
		DIE NO.	LAYOUT NO.	DIMENSION CLASSIFICATION <input checked="" type="checkbox"/> : CRITICAL <input checked="" type="checkbox"/> : MAJOR <input type="checkbox"/> : MINOR () : REFERENCE		INSULATION RANGE	REVISE ONLY ON CAD SYSTEM									
		WIRE CRIMP WIDTH	INS. CRIMP WIDTH	DRAWN BY	CHK'D BY		TITLE: Ø 5.4 RING TERMINAL									
				W.Y.YANG	B.K.CHOI		ENG.NO. SD 35750-12*0									
LTR	REVISION RECORD	ECN	DR/CHK	DATE	DIE FEED	APPL FEED	WBDW	IBDW	APP'D BY	SCALE	CAD (6:1)	Ø3.2 MAX.	ENG.NO.	SD 35750-12*0	IOF1	REV C

8 7 6 5 4 3 2 1

MK-9