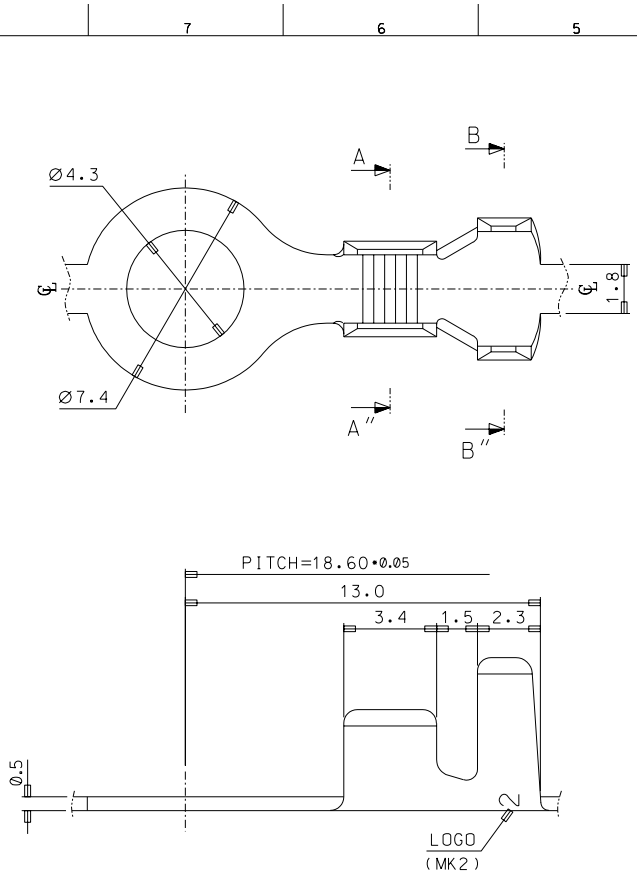


DO NOT SCALE DRAWING DIMENSION IN METRIC

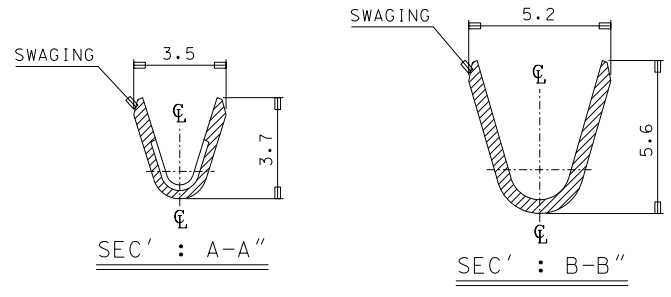
PROJECT NO. SD-35750-001  
SIMILAR ITEM Ø4.3 RING TERMINAL

PROJECT NO. SD-35750-001  
SIMILAR ITEM Ø4.3 RING TERMINAL

PROJECT NO. SD-35750-001  
SIMILAR ITEM Ø4.3 RING TERMINAL



- NOTES
1. MATERIAL : BRASS , 0.5mm THICKNESS
  2. FINISH : 35750-1000 (UNPLATED)  
35750-1010 (PRE-PLATED TIN)  
35723-0804 (POST-PLATED TIN-LEAD)
  3. RECOMMENDED LENGTH OF WIRE STRIP IS 4.8-5.4mm.
  4. APPLICABLE WIRE : AWG #18-#14 (0.75-2.08mm<sup>2</sup>)  
INSULATION DIA. : Ø3.2mm MAX.



REDRAWN EC NO. KDR2005-0017 DRWN: C. B. CHIN 04/08/23 CHK: W. Y. YANG APPR: C. W. LEE	QUALITY SYMBOLS MAJOR = 0 CRITICAL = 0	GENERAL TOLERANCES: (UNLESS SPECIFIED)		SCALE 7:1	DESIGN UNITS <input checked="" type="checkbox"/> mm <input type="checkbox"/> INCH	THIRD ANGLE PROJECTION <input checked="" type="checkbox"/>	DIMENSIONS: <input type="checkbox"/> mm <input type="checkbox"/> INCH <input checked="" type="checkbox"/> mm ONLY	SHT	REV	
		DRAWN BY & DATE J. S. KANG 97/12/04		CHECKED BY & DATE B. K. CHOI 97/12/04		APPROVED BY & DATE C. W. LEE 97/12/04		TITLE: Ø4.3 RING TERMINAL		
		CAD FILENAME s7501000.dgn		MATERIAL NO. SEE NOTES		DRAWING NO. SD-35750-001		SHEET NO. 1 of 1		
		DRAFT WHERE APPLICABLE MUST REMAIN WITHIN DIMENSIONS		THIS DRAWING CONTAINS INFORMATION THAT IS PROPRIETARY TO MOLEX INCORPORATED AND SHOULD NOT BE USED WITHOUT WRITTEN PERMISSION.						

Rev.A Released 2002/04/19