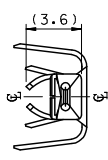
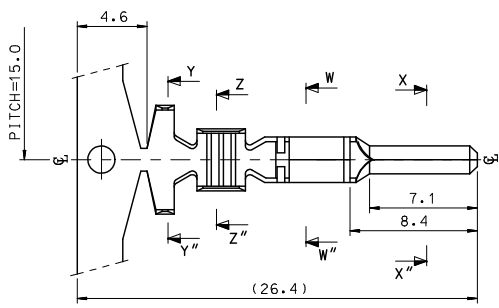
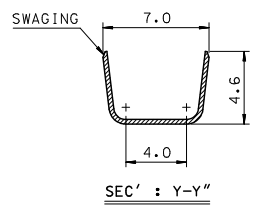
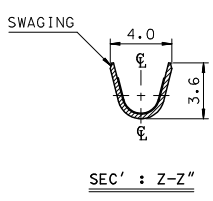
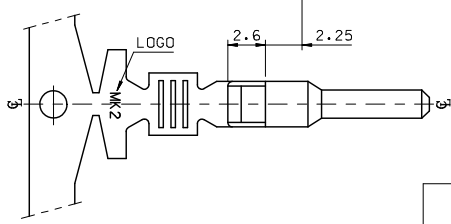
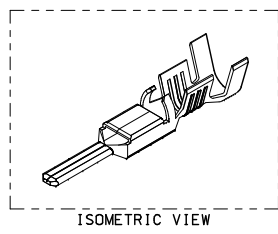
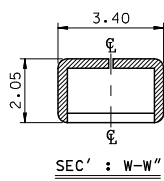
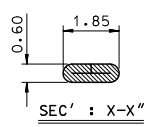
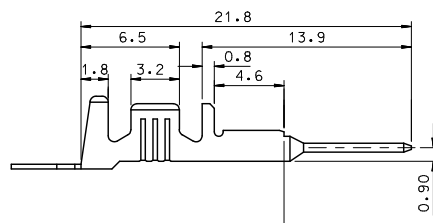


10 9 8 7 6 5 4 3 2 1



- NOTES.
1. MATERIAL : ⓄBRASS, PRE-TIN PLATED
  2. FINISH : 0.8~1.8μm,Tin(Sn) plating overall  
0.3~0.8μm,Copper(Cu) plating
  3. PRODUCT SPECIFICATION : PS-35150-001, PS-35180-002  
PS-35180-003, PS-35182-003, PS-35524-001
  4. CRIMPING SPECIFICATION : CS-35745-001
  5. RECOMMENDED LENGTH OF WIRE STRIP IS 4.0~4.8mm
  6. APPLICABLE WIRE SIZE : AWG #20+#20  
AWG #18+#18



REVISED EC NO: KOR2009-0151 DRAWN: JHPARK01 2009/05/18 CHKD: WY. YANG 2009/06/18 APPR: TUNSTIKKIM 2009/07/01	QUALITY SYMBOLS	GENERAL TOLERANCES (UNLESS SPECIFIED)	DIMENSION STYLE MM ONLY	SCALE 4:1	DESIGN UNITS METRIC	THIRD ANGLE PROJECTION
	▽=0	4 PLACES ± --- ± ---	mm INCH	DRAWN BY JS. KANG	DATE 1998/01/19	TITLE .070 MALE TERMINAL-B (LARGE)
	▽=0	3 PLACES ± --- ± ---		CHECKED BY BK. CHOI	DATE 1998/01/19	
		2 PLACES ± 0.2 ± ---		APPROVED BY CW. LEE	DATE 1998/01/19	
		1 PLACE ± 0.3 ± ---		MATERIAL NO. 357470310	DOCUMENT NO. SD-35747-002	SHEET NO. 1 OF 01
		ANGULAR ± 1 °	DRAFT WHERE APPLICABLE MUST REMAIN WITHIN DIMENSIONS			
MOLEX INCORPORATED THIS DRAWING CONTAINS INFORMATION THAT IS PROPRIETARY TO MOLEX INCORPORATED AND SHOULD NOT BE USED WITHOUT WRITTEN PERMISSION						

ib\_frame\_A3\_P\_ME\_T  
Rev. E 2006/04/15

9 8 7 6 5 4 3 2 1