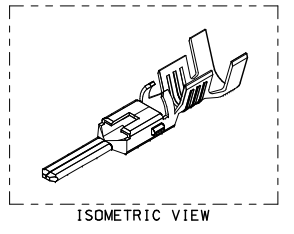
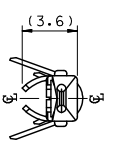
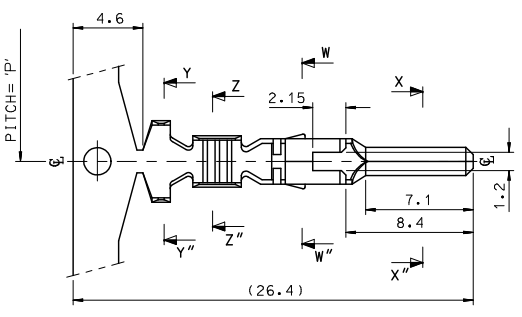
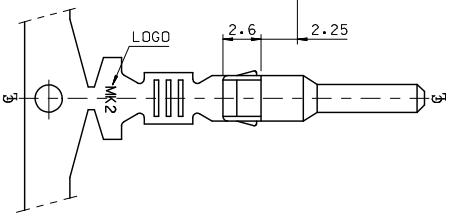
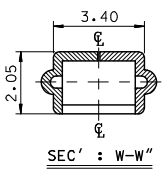
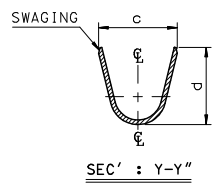
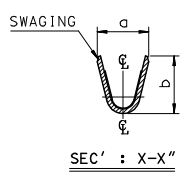
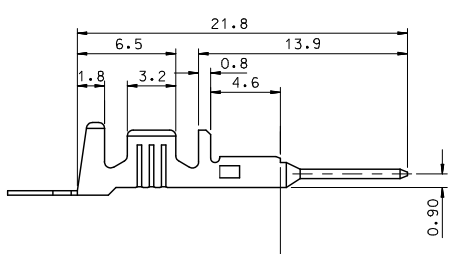
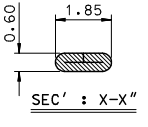


10 9 8 7 6 5 4 3 2 1



- NOTES.
1. MATERIAL : Ⓟ BRASS, PRE-TIN PLATED
 2. FINISH : 0.8~1.8 μm ,Tin(Sn) plating overall
0.3~0.8 μm ,Copper(Cu) plating
 3. PRODUCT SPECIFICATION : PS-35150-001, PS-35180-002
PS-35180-003, PS-35524-001
 4. CRIMPING SPECIFICATION : CS-35745-001
 5. RECOMMENDED LENGTH OF WIRE STRIP IS 4.0~4.8mm



MATERIAL NO	ENG. No.	AWG	a	b	c	d	PITCH 'P'
357450210	35745-0210	#18-#14	3.4	3.8	5.2	4.8	12.0
357450110	35745-0110	#22-#20	2.85	2.8	4.2	4.0	10.6
357450410	35745-0410	#24	2.2	1.75	3.85	3.5	10.6

REVISED EC NO: KOR2009-0151 DRAWN: JHPARK01 2009/05/18 CHKD: W. YANG 2009/06/18 APPR: YUNSIKKIM 2009/07/01	QUALITY SYMBOLS ▽=0 ▽=0	GENERAL TOLERANCES (UNLESS SPECIFIED)		DIMENSION STYLE MM ONLY	SCALE 4:1	DESIGN UNITS METRIC	THIRD ANGLE PROJECTION	
		mm	INCH	DRAWN BY JS. KANG	DATE 1998/01/19	TITLE .070 MALE TERMINAL (A-TYPE)		
REV	DESCRIPTION	4 PLACES ± --- ± ---	3 PLACES ± --- ± ---	2 PLACES ± 0.2 ± ---	1 PLACE ± 0.3 ± ---	APPROVED BY C.W. LEE		DATE 1998/01/19
		ANGULAR ± 1°		DRAFT WHERE APPLICABLE MUST REMAIN WITHIN DIMENSIONS		MATERIAL NO. SEE TABLE		
				SIZE A 3		DOCUMENT NO. SD-35745-001		SHEET NO. 1 OF 01
THIS DRAWING CONTAINS INFORMATION THAT IS PROPRIETARY TO MOLEX INCORPORATED AND SHOULD NOT BE USED WITHOUT WRITTEN PERMISSION								

ib_frame_A3_P_ME_T
Rev. E 2006/04/15

9 8 7 6 5 4 3 2 1