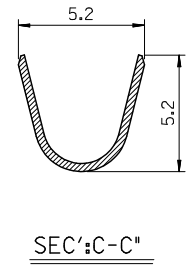
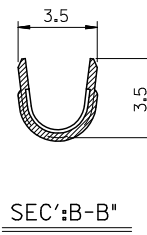
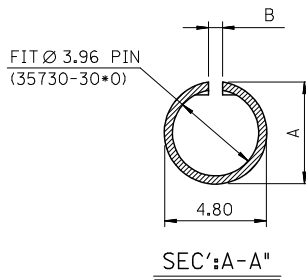
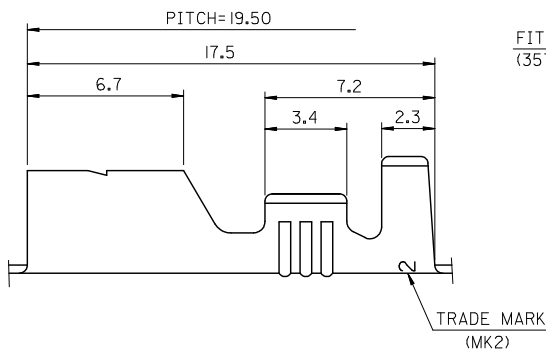


NOTES

1. MATERIAL : BRASS
2. FINISH : 35730-3100 : UNPLATED  
 @35730-3110 : TIN PLATED  
 1.0 μm MIN. TIN PLATING  
 OVERALL 0.3~0.8μm COPPER PLATING
3. PRODUCT SPECIFICATION : PS-35730-001
4. MATES WITH : 35730-30\*0
5. APPLICABLE WIRE RANGE : AWG #20~#14



ENG.NO.	DIMENSION	
	A	B
35730-3100	4.50	0.70
35730-3110	4.60	0.90

TABLE1

REVISED EC NO: KOR2009-015 DRWN: JHPARK01 2009/01/29 CHKD: WY. YANG 2009/01/29 APPR: YUNS.IKKIM 2009/01/29	QUALITY SYMBOLS ▽=0 ▽=0	GENERAL TOLERANCES (UNLESS SPECIFIED)		DIMENSION STYLE MM ONLY		SCALE 6:1	DESIGN UNITS METRIC	THIRD ANGLE PROJECTION	
		mm	INCH	DRAWN BY JS. KANG	DATE 1993/06/15	TITLE 3.96 PIN RECEPTACLE			
		4 PLACES ±---	±---	CHECKED BY BK. CHOI	DATE 1993/06/15	MATERIAL NO. SD-35730-31*0			
		3 PLACES ±---	±---	APPROVED BY CW. LEE	DATE 1993/06/15	DOCUMENT NO. SD-35730-31*0			
2 PLACES ±0.20	±---	DRAFT WHERE APPLICABLE MUST REMAIN WITHIN DIMENSIONS		SIZE A3		SHEET NO. 1 OF 01			
1 PLACE ±0.30	±---	THIS DRAWING CONTAINS INFORMATION THAT IS PROPRIETARY TO MOLEX INCORPORATED AND SHOULD NOT BE USED WITHOUT WRITTEN PERMISSION							
ANGULAR ±---									