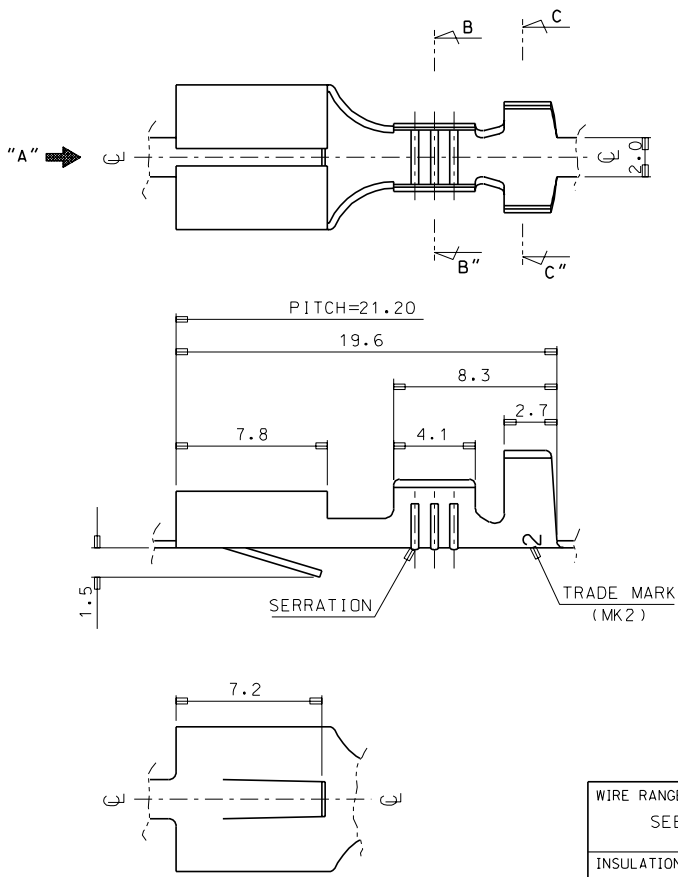
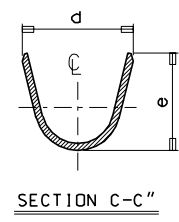
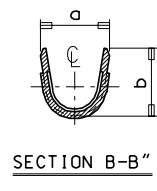
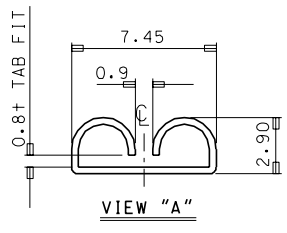


ENG. NO. SD 35725-3**0
 EDP. NO.
 SIMILAR ITEM
 PROJECT NO. .250 SLIP-IN REC'



- NOTES
1. MATERIAL : BRASS, 0.35mm THICKNESS
THICKNESS : 0.35 mm
 2. FINISH : UNPLATED(35725-3300/3400/3500)
POST-TIN PLATING(35725-3310/3410/3510)
 3. RECOMMENDED LENGTH OF WIRE STRIP IS 5.2-5.8 mm



ENG. NO.	a	b	d	e	WIRE RANGE	O'TY/REEL
35725-33*0	5.2	4.6	6.3	6.3	AWG #14-#10	4,000
35725-34*0	3.5	3.5	5.7	5.0	AWG #18-#14	5,000
35725-35*0	2.85	2.9	3.8	3.8	AWG #22-#20	5,000

WIRE RANGE SEE TABLE					MATERIAL SEE NOTES	MOLEX MOLEX-KOREA CO.,LTD.	
INSULATION RANGE ---	B	REVISED	95-007	95.1.17	GENERAL TOLERANCE DIMENSION : 1Pics:±0.30 ANGLE : 2Pics:±0.20	DRAWN BY J.S.KANG	CHK'D BY
DIE FEED: ---	A	CAD REDRAWING		93-6-3	DIMENSION CLASSIFICATION ▽: CRITICAL ▼: MAJOR ◇: REFERENCE	APP'D BY	SCALE 5:1(CAD)
APPLICATOR FEED: 21.2	LTR	REVISION RECORD	ECN	DATE	ASS'Y PART	TITLE; .250 SLIP-IN REC'	
O'TY/ REEL OR PACK SEE TABLE	REVISE ONLY ON CAD SYSTEM				DESCRIPTION	ENG. NO. SD 35725-3**0	SHEET 1 OF 1 REV B

THIS DRAWING CONTAINS INFORMATION THAT IS PROPRIETARY TO MOLEX(KOREA) AND SHOULD NOT BE USED WITHOUT WRITTEN PERMISSION
 MX-A3(ANSI:290,420)