

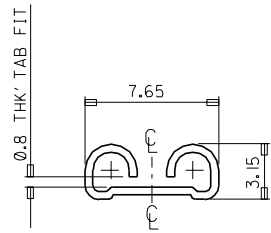
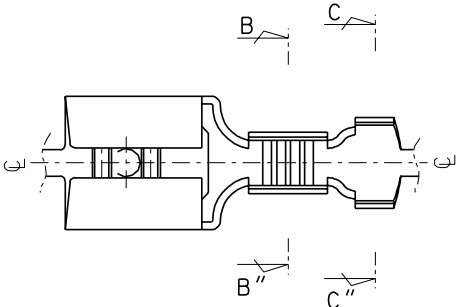
ENG. NO. SD 35725-27#0
 EDP. NO.
 PROJECT NO. .250 SLIP-ON REC'
 SIMILAR ITEM

8 7 6 5 4 3 2 1

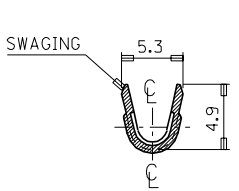
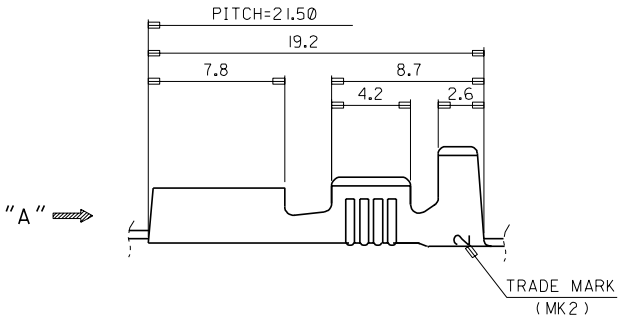
- NOTES
 1. MATERIAL : BRASS , 0.45mm THICKNESS
 2. PART NUMBER

PART NUMBER	FINISH
35725-2700	UNPLATED
35725-2710	POST PLATED TIN
35725-2740	POST PLATED TIN-LEAD

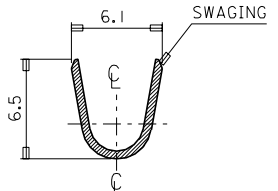
3. MATING TAB THICKNESS : 0.8 mm



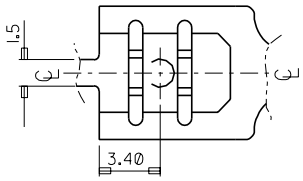
VIEW "A"



SEC' : B-B''



SEC' : C-C''



WIRE RANGE AWG #14-#10					MATERIAL SEE NOTES	molex MOLEX-KOREA CO.,LTD.	
INSULATION RANGE ø 3.8 - 5.3	C	REVISED	97-015	97.2.18	GENERAL TOLERANCE DIMENSION : 1 PLCS: +0.30 ANGLE : 2 PLCS: ±0.20	DRAWN BY J.S.KANG	CHK'D BY
DIE FEED: //	B	REVISED	96-048	96.4.19	DIMENSION CLASSIFICATION ▽ : CRITICAL ▼ : MAJOR () : REFERENCE	APP'D BY	SCALE 4.5 : 1
APPLICATOR FEED: 21.50	A	CAD REDRAWING		93.7.2	ASS'Y PART	TITLE : .250 SLIP-ON	
Q'TY/ REEL OR PACK 4.000 Q'TY/REEL	LTR	REVISION RECORD	ECN	DATE	DESCRIPTION	ENG. NO.	SEE NOTES
REVISE ONLY ON CAD SYSTEM					//	//	SHEET RECEPTACLE (SLOT)-L 1 of 1
							REV C

THIS DRAWING CONTAINS INFORMATION THAT IS PROPRIETARY TO MOLEX(KOREA) AND SHOULD NOT BE USED WITHOUT WRITTEN PERMISSION
 MX-A3(ANSI:290,420)