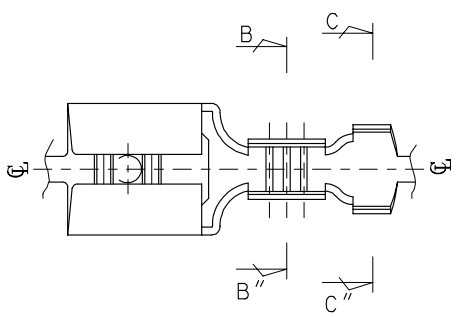


DWG. NO. SD-35725-002  
 SIMILAR ITEM  
 PROJECT NO.  
 DO NOT SCALE DRAWING  
 DIMENSION IN METRIC

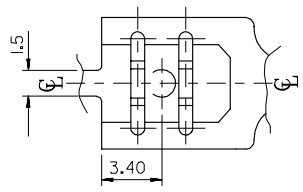
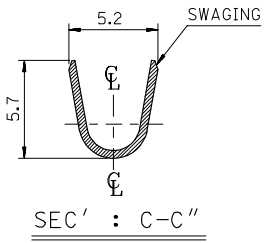
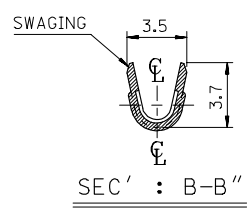
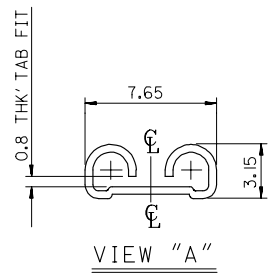
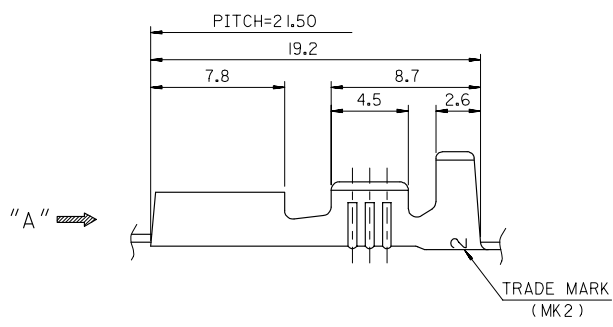


- NOTES
- MATERIAL : BRASS , 0.45mm THICKNESS
  - PART NO. AND FINISH

PART NO.	MATERIAL NO.	FINISH	TRADE MARK
35725-2400	357252400	UNPLATED	MK2
35725-2411	357252411	POST PLATED TIN	H MK2
35725-2410	357252410	POST PLATED TIN	MK2

H (TRADE MARK) : HIGH TENSION TIN-PLATED PRODUCT

- APPLICABLE WIRE RANGE : AWG #18 - #14
- RECOMMENDED LENGTH OF WIRE STRIP IS 6.0-6.8mm



REV	DESCRIPTION	QUALITY SYMBOLS	GENERAL TOLERANCES: (UNLESS SPECIFIED)		SCALE	DESIGN UNITS	THIRD ANGLE PROJECTION	DIMENSIONS:			SHT	REV	
			mm	INCH				mm	INCH	mm ONLY			
02	REVISED EC NO. KOP2005-0198 DRWN: JB.JIN 05/04/29 CHK: W.Y. YANG APPR: C.W.LEE	MAJOR = 0 CRITICAL = 0	4 PLACES	±0.	±.	4.5:1	mm	INCH	TITLE: .250 SLIP-ON RECEPTACLE (SLOT TYPE)				
			3 PLACES	±0.	±.				DRAWN BY & DATE J.S.KANG 93/07/02				
			2 PLACES	±0.20	±.				CHECKED BY & DATE B.K.CHOI 93/07/02				
			1 PLACE	±0.30	±.				APPROVED BY & DATE C.W.LEE 93/07/02				
			ANGULAR: ± °						CAD FILENAME S7252400.dgn				
			DRAFT WHERE APPLICABLE MUST REMAIN WITHIN DIMENSIONS						MATERIAL NO. SEE TABLE				
									DRAWING NO. SD-35725-002				
									MOLEX INCORPORATED				
									THIS DRAWING CONTAINS INFORMATION THAT IS PROPRIETARY TO MOLEX INCORPORATED AND SHOULD NOT BE USED WITHOUT WRITTEN PERMISSION.				
									SHEET NO. 1 OF 1				
									SIZE B				

MX-A3