

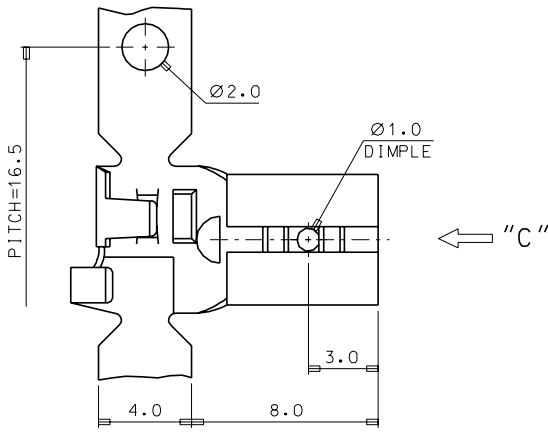
ENG. NO. SD 35718-12**

EDP. NO.

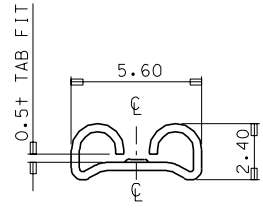
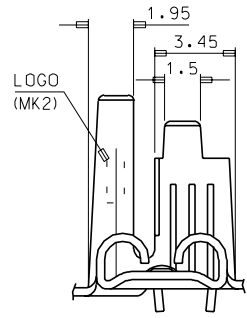
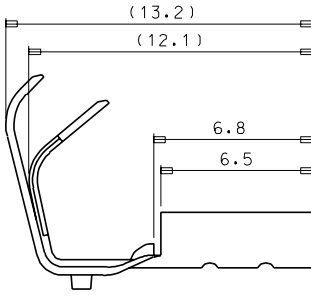
SIMILAR ITEM

PROJECT NO.

8 7 6 5 4 3 2 1



- NOTES
1. MATERIAL : 35718-12*0 (BRASS)
35718-12*1 (PHOSPHOR BRONZE)
 2. THICKNESS : 0.35mm
 3. FINISH : 35718-120* (UNPLATED)
35718-121* (POST PLATED TIN)
 4. GENERAL TOLERANCE : 1PLCS : ±0.3
2PLCS : ±0.2



WIRE RANGE AWG #20 - #16 (0.52-1.31mm ²)					MATERIAL SEE NOTES	molex MOLEX-KOREA CO.,LTD.	
INSULATION RANGE Ø 3.1 MAX.	B	REVISED	KDR7 -0085	97 7.18	GENERAL TOLERANCE DIMENSION : — ANGLE : —	DRAWN BY W. Y. YANG	CHK'D BY
DIE FEED: —	A	NEW RELEASED	93-003	93 2.27	DIMENSION CLASSIFICATION ▽ : CRITICAL ▼ : MAJOR () : REFERENCE	APP'D BY	SCALE 6/1
APPLICATOR FEED: 16.5	LTR	REVISION RECORD	ECN	DATE	ASS'Y PART DESCRIPTION ENG. NO.	TITLE; .187 FLAG RECEPTACLE	SHEET 1 of 1
Q'TY/ REEL OR PACK 4,000 Q'TY/REEL	REVISE ONLY ON CAD SYSTEM				—	ENG. NO. SD 35718-12**	REV B

THIS DRAWING CONTAINS INFORMATION THAT IS PROPRIETARY TO MOLEX(KOREA) AND SHOULD NOT BE USED WITHOUT WRITTEN PERMISSION
MX-A3(ANSI:290,420)

s7181200.dgn