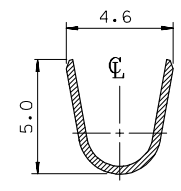
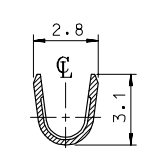
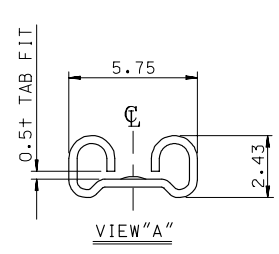
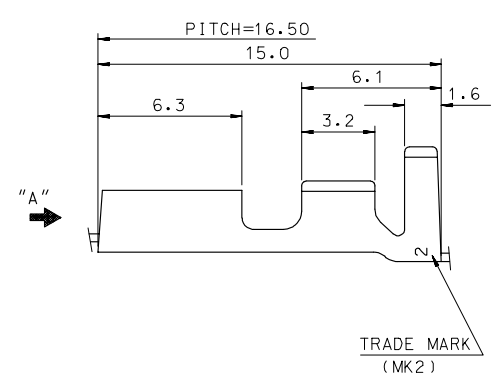
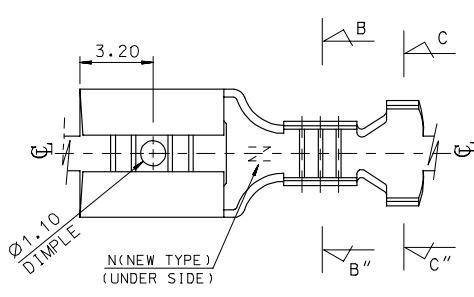


DWG. NO. SD 35718-09\*0  
 PROJECT NO.  
 SIMILAR ITEM  
 DO NOT SCALE DRAWING  
 DIMENSION IN METRIC



- NOTES
- MATERIAL : BRASS
  - FINISH : 35718-0900 : UNPLATED  
35718-0910 : POST - TIN PLATED  
35703-0260 : TIN PLATED (LEAD FREE)
  - APPLICABLE WIRE RANGE : AWG #20 - #16

REVISED EC NO. KOR2005-0180 DRWN: D.Y.JANG (05/04/12) CHK: Y.SKJOM (05/04/12) APPR: C.W.LEE (05/04/12)	DESCRIPTION MAJOR CRITICAL C = 0	GENERAL TOLERANCES: (UNLESS SPECIFIED)		SCALE 6:1	DESIGN UNITS <input checked="" type="checkbox"/> mm <input type="checkbox"/> INCH	THIRD ANGLE PROJECTION	DIMENSIONS: <input type="checkbox"/> mm <input type="checkbox"/> INCH <input checked="" type="checkbox"/> mm ONLY	SHT REV
		4 PLACES ±0. ±.	DRAWN BY & DATE W.Y.YANG 93.05.24	TITLE: .187 SLIP-ON RECEPTACLE		MOLEX INCORPORATED	SHEET NO. 1 OF 1	
		3 PLACES ±0. ±.	CHECKED BY & DATE B.K.CHOI 93.05.24	APPROVED BY & DATE C.W.LEE 93.05.24				
		2 PLACES ±0.20 ±.	CAD FILENAME S7180900.DGN	MATERIAL NO. SEE NOTES	DRAWING NO. SD-35718-09*0	SIZE B		
1 PLACE ±0.30 ±.	DRAFT WHERE APPLICABLE MUST REMAIN WITHIN DIMENSIONS	THIS DRAWING CONTAINS INFORMATION THAT IS PROPRIETARY TO MOLEX INCORPORATED AND SHOULD NOT BE USED WITHOUT WRITTEN PERMISSION.						

LEAD FREE

MX-A3