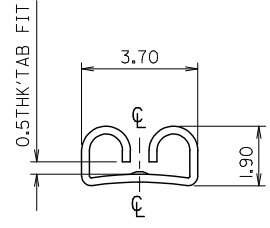
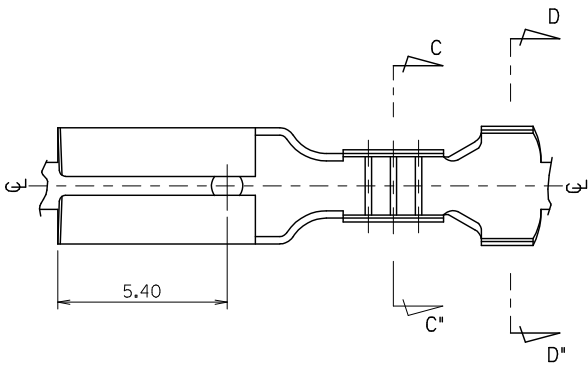
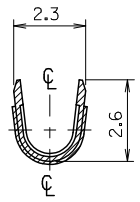


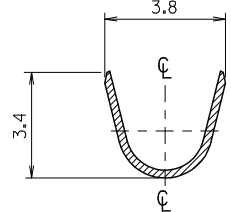
10 9 8 7 6 5 4 3 2 1



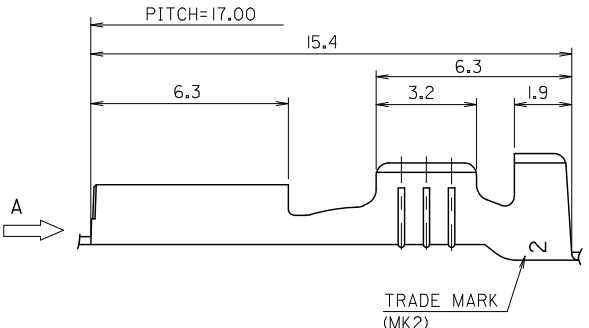
VIEW "A"



SECTION:C-C'



SECTION:D-D'



- NOTES.
- MATERIAL : BRASS
  - FINISH : 35711-0800 : UNPLATED  
35711-0810 : ©PRE-TIN PLATED  
0.8~1.8 μm TIN PLATING  
OVERALL 0.3~0.8μm COPPER PLATING
  - PRODUCT SPECIFICATION : PS-35544-001  
PS-35702-001  
PS-68428-001
  - MATES WITH : 0.5t TAB
  - APPLICABLE WIRE RANGE : AWG #22~#20

REVISED EC. NO.: KOR2009-0111 2009/01/30 DRWN: JHPARK01 CHKDWT: YANG 2009/01/30 APPR: YUNSIKKIM 2009/01/30	QUALITY SYMBOLS ▽=0 ▽=0	GENERAL TOLERANCES (UNLESS SPECIFIED)		DIMENSION STYLE MM ONLY		SCALE 8:1	DESIGN UNITS METRIC	THIRD ANGLE PROJECTION		
		4 PLACES ± --- ± ---	3 PLACES ± --- ± ---	2 PLACES ± --- ± ---	1 PLACE ± 0.30 ± ---	ANGULAR ± ---°	DRAWN BY WY. YANG 1993/04/15	DATE 1993/04/15	CHECKED BY BK. CHOI 1993/04/15	DATE 1993/04/15
		DRAFT WHERE APPLICABLE MUST REMAIN WITHIN DIMENSIONS		SEE NOTE		MATERIAL NO. SD-35711-08*0		DOCUMENT NO.		SHEET NO. 1 OF 01
		THIS DRAWING CONTAINS INFORMATION THAT IS PROPRIETARY TO MOLEX INCORPORATED AND SHOULD NOT BE USED WITHOUT WRITTEN PERMISSION								

9 8 7 6 5 4 3 2 1