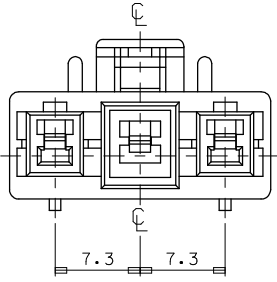
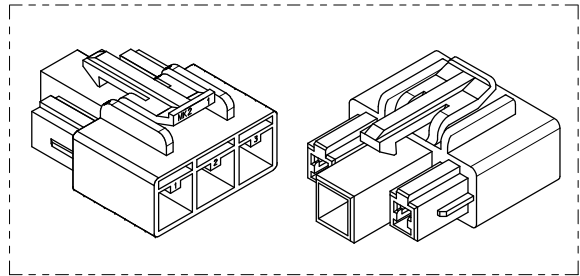
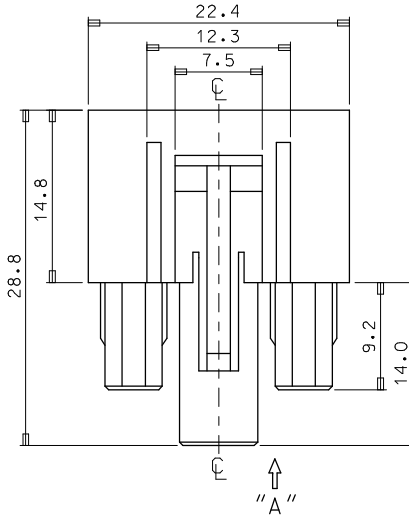
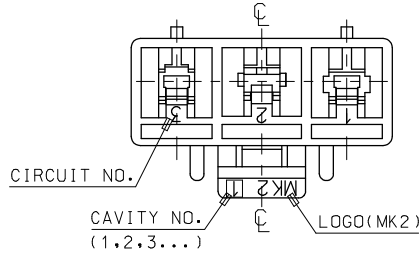
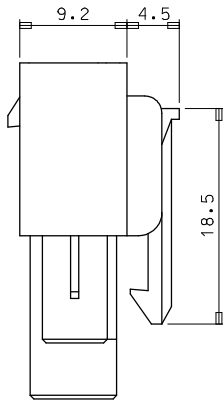


10 9 8 7 6 5 4 3 2 1



VIEW "A"



- NOTES
1. MATERIAL . COLOR : SEE TABLE
 2. MATED HOUSING : 35150-*30*
35150-*31*
35150-039*(T.P.A)
 3. APPLICABLE TERMINAL : 35746-0*10 (1 CIRCUIT)
35745-0*10 (2 CIRCUIT)
35748-0*10 (3 CIRCUIT)

FINISH	DESCRIPTION	ORDER NO	MATERIAL NO	NO
BLUE COLOR	PET/PC (UL94V-0)	35151-4319	351514319	6
YELLOW COLOR		35151-3319	351513319	5
RED COLOR	PBT (UL94V-0)	35151-2319	351512319	4
NATURAL COLOR		35151-0319	351510319	3
BLUE COLOR		35151-0314	351510314	2
NATURAL COLOR		35151-0310	351510310	1
MATERIAL		PRODUCT		

[TABLE]

REVISED EC NO: KOR2009-0014 DRAWN: JHPARK01 2008/08/19 CHKDWY: YANG 2008/08/19 APPR: YUNS.HK.HM 2008/08/19 DESCRIPTION	QUALITY SYMBOLS ▽=0 ▽=0	GENERAL TOLERANCES (UNLESS SPECIFIED)		DIMENSION STYLE	SCALE	DESIGN UNITS	THIRD ANGLE PROJECTION		
				MM ONLY	3:1	METRIC			
				DRAWN BY	DATE	TITLE			
				JS KANG		7.3 PITCH W/W CONN FEMALE HSG-3P			
D REVISIONS	DESCRIPTION			CHECKED BY	DATE	MOLEX INCORPORATED			
				APPROVED BY	DATE	SD-35151-031*			
				MATERIAL NO.	DATE	DOCUMENT NO.	SHEET NO.		
				SEE TABLE			1 OF 01		
		DRAFT WHERE APPLICABLE MUST REMAIN WITHIN DIMENSIONS		SIZE A3		THIS DRAWING CONTAINS INFORMATION THAT IS PROPRIETARY TO MOLEX INCORPORATED AND SHOULD NOT BE USED WITHOUT WRITTEN PERMISSION			

9 8 7 6 5 4 3 2 1