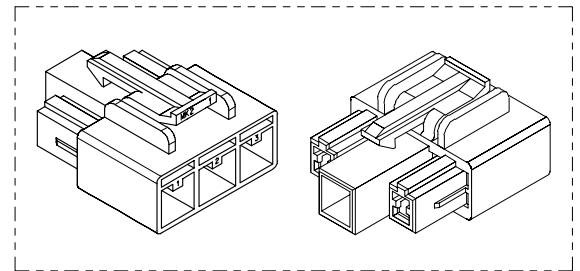
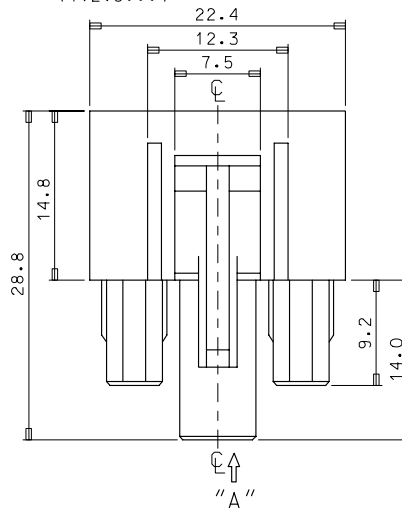
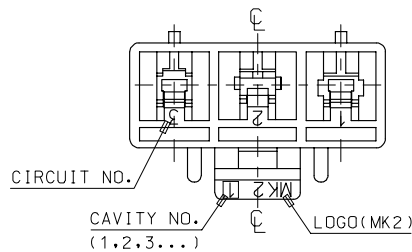
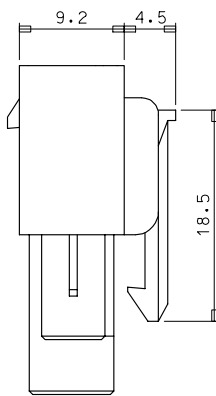


VIEW "A"



- NOTES
1. MATERIAL & COLOR : SEE TABLE
 2. MATCHED HOUSING : 35150-030*
35150-031*
35150-039* (T.P.A)
 3. APPLICABLE TERMINAL : 35746-0*10 (1 CIRCUIT)
35745-0*10 (2 CIRCUIT)
35748-0*10 (3 CIRCUIT)

NO	PRODUCT		MATERIAL	
	PART NO	MATERIAL NO	COLOR	DESCRIPTION
1	35151-0310	351510310	NATURAL	PBT (UL94V-0)
2	35151-0314	351510314	BLUE	PBT/PC (UL94V-0)
3	35151-0319	351510319	NATURAL	
4	35151-2319	351512319	RED	
5	35151-3319	351513319	YELLOW	
6	35151-4319	351514319	BLUE	

REVISED
EC NO: KOR2008-0048
DRWN: JHPARK01 2007/09/10
CHKD: WYANG 2007/09/10
APPR: TUNSIKIM 2007/09/10

QUALITY SYMBOLS
▽=0
▽=0

GENERAL TOLERANCES (UNLESS SPECIFIED)

	mm	INCH
4 PLACES	± ---	± ---
3 PLACES	± ---	± ---
2 PLACES	± ---	± ---
1 PLACE	± 0.3	± ---
ANGULAR ± 1 °		

DRAFT WHERE APPLICABLE
MUST REMAIN
WITHIN DIMENSIONS

DIMENSION STYLE
MM ONLY

DRAWN BY
JS. KANG

CHECKED BY

APPROVED BY

MATERIAL NO.
SEE TABLE

SCALE
3:1

DESIGN UNITS
METRIC

THIRD ANGLE
PROJECTION

TITLE
7.3 PITCH W/W CONN
FEMALE HSG-3P

MOLEX INCORPORATED

DOCUMENT NO.
SD-35151-031*

SHEET NO.
1 OF 01

THIS DRAWING CONTAINS INFORMATION THAT IS PROPRIETARY TO MOLEX INCORPORATED AND SHOULD NOT BE USED WITHOUT WRITTEN PERMISSION