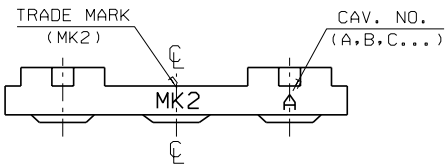
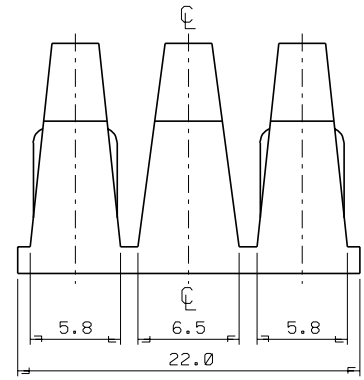
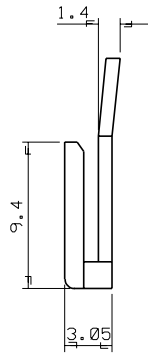
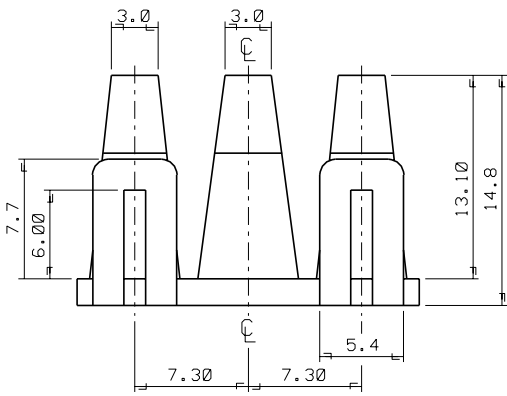
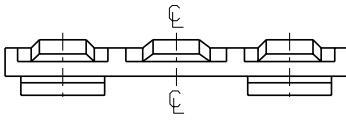
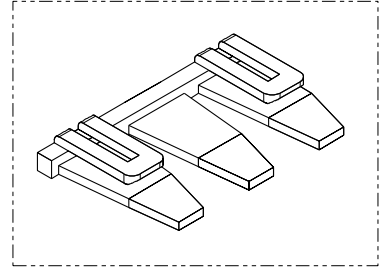


ENG. NO. SD 35150-039*
 EDP. NO.
 SIMILAR ITEM
 PROJECT NO. .070 W/W CONN'

8 7 6 5 4 3 2 1

NOTES

1. MATERIAL : NYLON 66 (UL94V-2)
2. COLOR : 35150-0390 (NATURAL)
 35150-0392 (RED)
 35150-0393 (YELLOW)
 35150-0394 (BLUE)
3. MATCHED HOUSING : 35150-030*/031*
 35151-031*
 35150-060*/061*
 35151-061*



				MATERIAL SEE NOTES		molex MOLEX-KOREA CO.,LTD.	
				GENERAL TOLERANCE DIMENSION : +0.3		DRAWN BY J.S.KANG	
				ANGLE : +1°		CHK'D BY	
B	REVISED	95-127	95-11-22	DIMENSION CLASSIFICATION		SCALE 4/1	
A	NEW RELEASED		92-9-14	▽ : CRITICAL ▼ : MAJOR		APPR'D BY	
				LTR REVISION RECORD ECN DATE		TITLE: 7.3 PITCH W/W CONN' T,P,A - 3P	
				ASS'Y PART DESCRIPTION ENG. NO.		SHEET 1 OF 1	
				REVISION RECORD ECN DATE		ENG. NO. SD 35150-039*	
				REVISION RECORD ECN DATE		REV B	

S1500390.DGN

THIS DRAWING CONTAINS INFORMATION THAT IS PROPRIETARY TO MOLEX(KOREA) AND SHOULD NOT BE USED WITHOUT WRITTEN PERMISSION MX-A3(ANSI:290,420)