

4

3

2

1

THIS DRAWING IS UNPUBLISHED. RELEASED FOR PUBLICATION OCT. 2005.
 © COPYRIGHT 2005 BY TYCO ELECTRONICS CORPORATION. ALL RIGHTS RESERVED.

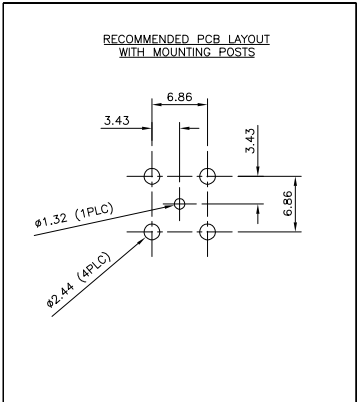
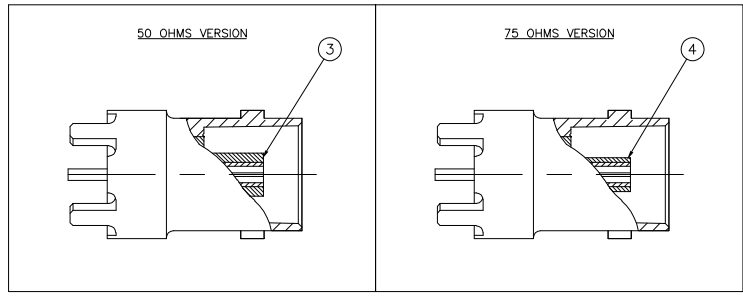
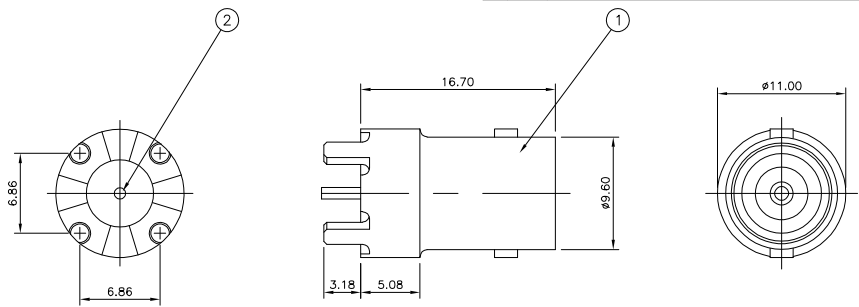
LOC		DIST		REVISIONS			
P	LTR	DESCRIPTION		DATE	DWN	APVD	
	A	FIRST ISSUE		10OCT05	JMS	FWK	

NOTES

- △ 100 TRAY PACK IN ACCORDANCE WITH AMP SPEC 107-3275
- △ SINGLE PACK IN ACCORDANCE WITH AMP SPEC 107-3275
- △ Au PLATING
- △ Ni PLATING
- 5. CHARACTERISTICS

FREQUENCY RANGE (50 OHMS):	DC-4GHz
FREQUENCY RANGE (75 OHMS):	DC-2GHz
INSULATION RESISTANCE:	5000 MOHMS
WORKING VOLTAGE:	500V
DIELECTRIC WITHSTAND VOLTAGE:	1500V RMS
TEMPERATURE RATE:	-55°C TO +85°C
CONTACT RESISTANCE:	3 mOHMS
- 6. MECHANICAL CHARACTERISTICS

DURABILITY:	50 CYCLES
-------------	-----------



QTY	1	1	-	-	TPX	INSULATOR	4
	-	-	1	1	TPX	INSULATOR	3
	1	1	1	1	PHOS BRONZE	CONTACT	2
	1	1	1	1	ZINC ALLOY	BODY	1
	5--3	5--2	5--1	5--0	MATERIAL	DESCRIPTION	ITEM

THIS DRAWING IS A CONTROLLED DOCUMENT.		DWN J. SANDWELL 100CT05	Tyco Electronics Corporation Bideford, UK, EX39 4HE	
DIMENSIONS: mm		CHK S. PARLOW 100CT05		
TOLERANCES UNLESS OTHERWISE SPECIFIED: 0 PLC ± - 1 PLC ± - 2 PLC ± - 3 PLC ± - 4 PLC ± - ANGLES ± -		APVD E. WHEELER-KING 100CT05	NAME BNC STRAIGHT PCB SOCKET	
MATERIAL		PRODUCT SPEC	RESTRICTED TO	
FINISH		APPLICATION SPEC	SIZE CAGE CODE DRAWING NO	
		WEIGHT	A3 00779 C-1634506	
		CUSTOMER DRAWING	SCALE NTS	SHEET 1 OF 1 REV A