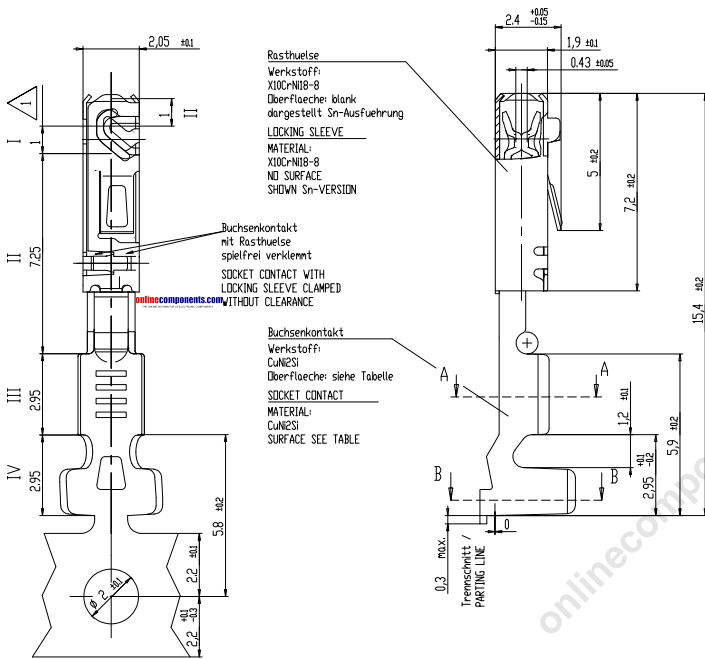


THIS DRAWING IS UNPUBLISHED. RELEASED FOR PUBLICATION. ALL RIGHTS RESERVED.

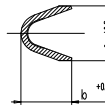


Rasthülse  
Werkstoff: X100-Ni8-B  
Oberfläche: blank  
dargestellt Sn-Ausführung  
LOCKING SLEEVE  
MATERIAL: X100-Ni8-B  
NO SURFACE  
SHOWN Sn-VERSION

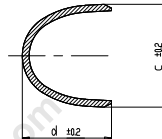
Buchsenkontakt  
mit Rasthülse  
spielfrei verklemt  
SOCKET CONTACT WITH  
LOCKING SLEEVE CLAMPED  
WITHOUT CLEARANCE

Buchsenkontakt  
Werkstoff: CuNiSi  
Oberfläche: siehe Tabelle  
SOCKET CONTACT  
MATERIAL: CuNiSi  
SURFACE SEE TABLE

Schnitt A-A



Schnitt B-B



LOC		DIST		REVISIONS			
	AI	F	LR	DESCRIPTION	DATE	BY	APPD
		A		Zehung, überarbeitet / Ersatz Siemens EC-Zehung DRAWING REVISED / SUPERSEDED SIEMENS EC DRAWING	23AUG2000	Abt.	-
		A1		Zehnung nach BMW Angaben ergoentzt DRAWING TO BMW DATA COMPLIANTS	09MAY2001	Abt.	-
		A2		Bemerkung 1 ergoentzt / NOTE 1 ADDED	29AUG2001	CG	
		A3		EGA0-1091-03	24NOV2003	Abt.	

Massgebend ist der deutsche Text.  
ONLY THE GERMAN-LANGUAGE VERSION  
SHALL BE BINDING.

Bemerkung/NOTES

- 1 Befettung: Schutzfilm Optinol, 10% Loesung in Testbenzin  
DIP GREASED WITH OPTIMOL, 10% SOLUTION IN ALCOHOL
- 2 Laengen und Winkel: DIN 7168-n ; Form und Lage: DIN ISO 2768-mH  
LENGHT AND ANGLES: DIN 7168-n; FORM AND POSITION: DIN ISO 2768-mH

Oberflaeche / SURFACE

Ausfuehrung VERSION	Schichtdicke PLATING THICKNESS
Sn	2±1 µm Sn feuerverzinkt / HDT-DIP TINNED
Au	Zone I >= 1 µm Au ueber 2±1 µm Ni >= 1 µm Au DVER 2±1 µm Ni
	Zone II Au- bzw. Sn-Auslauf ueber <= 4 µm Ni Au- AND/OR Sn-RUNOUT DVER <= 4 µm Ni
	Zone III 2±1 µm Sn galv. ueber <= 1 µm Ni 2±1 µm Sn GALV. DVER <= 1 µm Ni
	Zone IV >= 1 µm Sn ueber <= 1 µm Ni >= 1 µm Sn DVER <= 1 µm Ni

TE Best-Nr. TE ORDER NO.	Rev.	Leitungs- querschnitt CONDUCTOR SIZE	Ober- flaeche SURFACE	a	b	c	d	g	Bemerkungen REMARKS
2-1411573-1	A	0.75	Sn	2.40	2.45	3.75	3.1	0.2	gedreht ROTATED
0-1411572-2	A	0.35 - 0.5	Au	2	1.85	3.75	3.1	0.2	gedreht ROTATED Ersatz fuer / REPLACES FOR: 0-1411556-2
0-1411572-1	A	0.35 - 0.5	Sn	2	1.85	3.75	3.1	0.2	gedreht ROTATED Ersatz fuer / REPLACES FOR: 1-1411556-1

THIS DRAWING IS A CONTROLLED DOCUMENT. DIM: C. Abraham 23AUG2000. C. G. S. 09AUG2000. C. G. S. 09AUG2000. NAME: M. Bleicher. PRODUCT SPEC: 108-94155. APPLICATION SPEC: 114-18432. WEIGHT: -. SIZE: A2. CASE CODE: 00779. DRAWING NO: 1411611. RESTRICTED TO: -. CUSTOMER DRAWING. SCALE: 10:1. SHEET: 1 of 1. REV: A3.