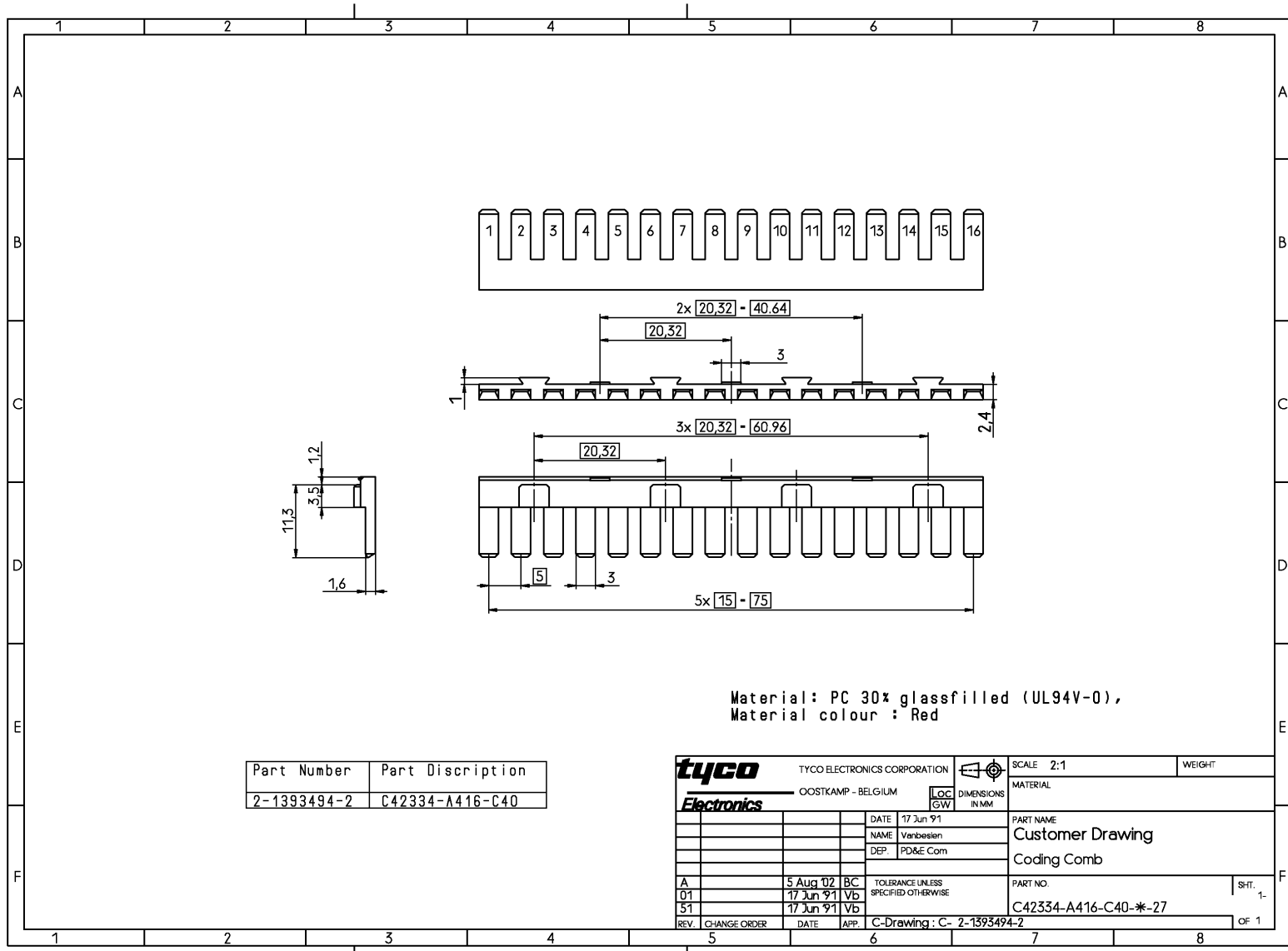


PROPRIETARY: THIS INFORMATION IS CONFIDENTIAL AND PROPRIETARY TO TYCO ELECTRONICS CORPORATION AND ITS WORLDWIDE SUBSIDIARIES AND AFFILIATES. IT MAY NOT BE DISCLOSED TO ANYONE OTHER THAN TYCO ELECTRONICS PERSONNEL WITHOUT WRITTEN AUTHORIZATION FROM TYCO ELECTRONICS CORPORATION, HARRISBURG PENNSYLVANIA USA.



Material: PC 30* glassfilled (UL94V-0),
Material colour : Red

Part Number	Part Discription
2-1393494-2	C42334-A416-C40

tyco TYCO ELECTRONICS CORPORATION		SCALE: 2:1	WEIGHT
OOSTKAMP - BELGIUM		MATERIAL	
LOC DIMENSIONS IN MM		PART NAME	
GW		Customer Drawing	
DATE: 17 Jun 91	NAME: Vanbosten	Coding Comb	
DEP: PD&E Com		PART NO.	
		C42334-A416-C40-* -27	
A 5 Aug 02 BC	TOLERANCE UNLESS SPECIFIED OTHERWISE	SHT. 1-	
01 17 Jun 91 VB		OF 1	
S1 17 Jun 91 VB			
REV. CHANGE ORDER	DATE	APP.	C-Drawing : C- 2-1393494-2