

4

3

2

1

THIS DRAWING IS UNPUBLISHED. RELEASED FOR PUBLICATION NOV. 2005.  
 © COPYRIGHT 2005 BY TYCO ELECTRONICS CORPORATION. ALL RIGHTS RESERVED.

LOC		DIST		REVISIONS			
P	LTR	DESCRIPTION		DATE	DWN	APVD	
C		ECR-05-016219		23NOV05	JMS	FWK	

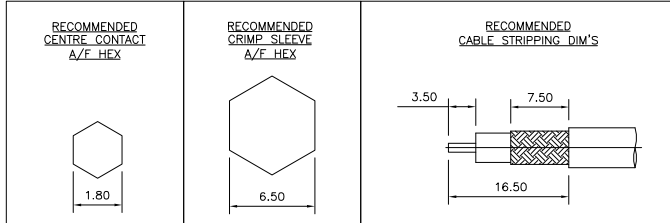
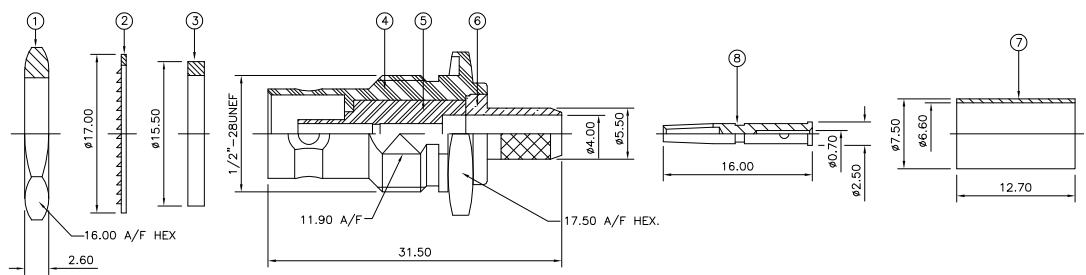
- NOTES:**
- ▲ PACK IN ACCORDANCE WITH AMP SPEC 107-3275
  - ▲ 100 TRAY PACK IN ACCORDANCE WITH AMP SPEC 107-3275
  - ▲ Au PLATING
  - ▲ Ni PLATING
  - ▲ THIS ITEM MUST BE WHITE

- 6 HAND TOOL : 9-1478240-0
- 7 DIE SET : 9-1478242-0

- 8 ELECTRICAL CHARACTERISTICS**
- |                               |                            |
|-------------------------------|----------------------------|
| FREQUENCY RANGE:              | DC - 2 GHz                 |
| NOMINAL IMPEDANCE:            | 75 Ohm                     |
| INSULATION RESISTANCE:        | 5000 MOhm                  |
| WORKING VOLTAGE:              | 500 Volts RMS at Sea Level |
| DIELECTRIC WITHSTAND VOLTAGE: | 1500 Volts RMS Max         |
| CONTACT RESISTANCE:           | 1.50 mOhm Max              |
| CENTRE CONTACT:               | 0.20 mOhm Max              |
| OUTER CONTACT:                | 1.20:1 Max                 |
| VSWR @ 2GHz:                  | 0.20 Max                   |
| INSERTION LOSS dB @ x 2 GHz:  | 0.20 Max                   |

- 9 MECHANICAL CHARACTERISTICS**
- |                               |                |
|-------------------------------|----------------|
| COUPLING RETENTION FORCE:     | N/A            |
| CABLE RETENTION FORCE:        | 170N Min       |
| MOUNT NUT RECOMMENDED TORQUE: | 4N             |
| DURABILITY:                   | 500 Cycles Min |

- 10 ENVIRONMENTAL CHARACTERISTICS**
- |                        |                  |
|------------------------|------------------|
| OPERATING TEMPERATURE: | -65 to +165 DegC |
|------------------------|------------------|



QUANTITY PER ASSY	PARTS LIST
1 1	BRASS CONTACT 8
1 1	BRASS FERRULE 7
1 1	BRASS CHASSIS 6
1 1	PTFE INSULATION 5
1 1	BRASS BODY 4
1 1	SILICON RUBBER GASKET 3
1 1	STEEL LOCKWASHER 2
1 1	BRASS HEX NUT 1
6--0 1--0	MATERIAL DESCRIPTION ITEM

THIS DRAWING IS A CONTROLLED DOCUMENT.

DIMENSIONS: mm	TOLERANCES UNLESS OTHERWISE SPECIFIED:	DWN J. SANDWELL 23NOV05	23NOV05
0 PLC ± -	1 PLC ± -	CHK S. PARLOW 23NOV05	23NOV05
2 PLC ± -	3 PLC ± -	APVD F. WHEELER-KING 23NOV05	23NOV05
4 PLC ± -	ANGLES ± -	PRODUCT SPEC	108-3435
MATERIAL SEE TABLE	FINISH -	APPLICATION SPEC	411-3247
		WEIGHT -	

CUSTOMER DRAWING		TYCO Electronics Tyco Electronics Corporation Bideford EX39 4HE	
NAME		BNC BULKHEAD JACK REAR MOUNT CRIMP 75 OHM	
SIZE		RG59B/U, 62A/U, 140/U, 210/U, URM90, KX6A, KX25, KX52, KX53	
CAGE CODE	DRAWING NO	RESTRICTED TO	
A300779	1337435		
SCALE	SHEET	OF	REV
NTS	1	1	C