

IEC Appliance Inlet C14 with Filter, Fuseholder 2-pole, Line Switch 2-pole

Standard- or Medical-Filter



on phase-out



### Description

- Panel Mount:  
Screw-on mounting from front side
- 4 Functions:  
Appliance Inlet Protection class I, Line Switch 2-pole, Fuseholder for fuse-links 5 x 20 mm 2-pole, Line filter in standard and medical version
- Quick connect terminals 6.3 x 0.8 mm

### Approvals

- VDE License Number: 40004665
- UL License Number: E72928

### Characteristics

- Compact design with optimal shielding
- All single elements are already wired
- Plug removal necessary for fuse-link replacement  
If the power entry module is installed as normal, it is not possible to touch any live parts with the test-finger according to IEC60529  
Fuse drawer meets requirements of medical standard IEC/EN 60601-1  
The fuseholder is accessible from the equipment front
- With EMC-shield
- Qualified for use in equipment according IEC/EN 60950

### Other versions on request

- Medical version M80

### References

[General Product Information](#)

### Weblinks

[Approvals](#), [RoHS](#), [CHINA-RoHS](#), [Mating Connectors](#), [Distributor-Stock-Check](#), [Accessories](#)

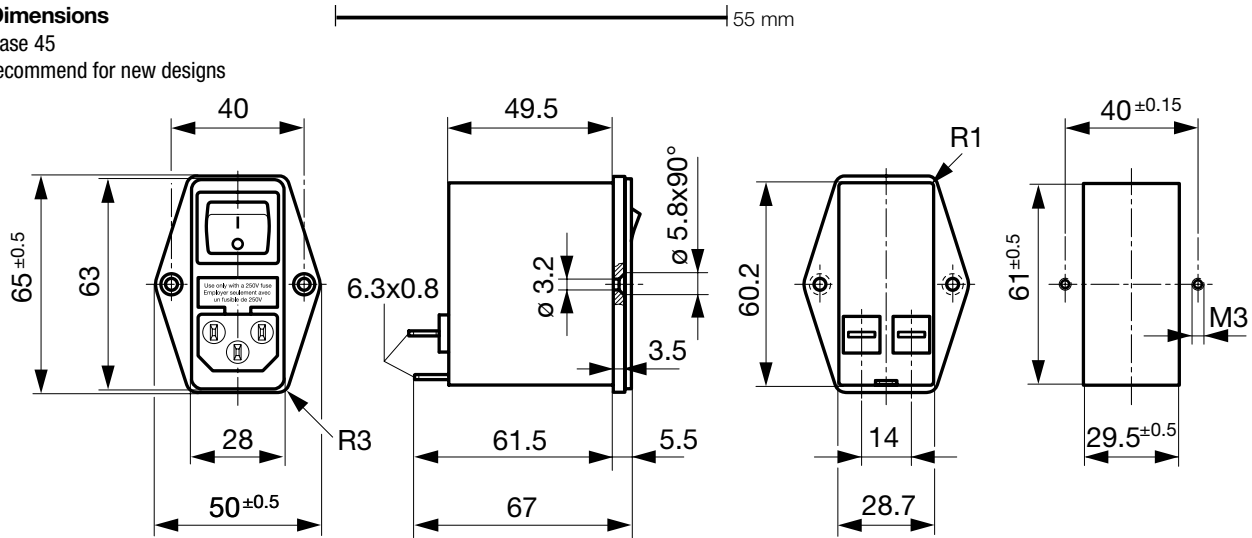
### Technical Data

Ratings IEC	1 - 10A @ Ta 40 °C / 250VAC; 50Hz
Ratings UL/CSA	1 - 10A @ Ta 40 °C / 125VAC; 60Hz
Leakage Current	standard < 0.25mA (250V / 60Hz) medical < 5 µA (250V / 60Hz)
Dielectric Strength	> 1.7 kVDC between L-N > 2.7 kVDC between L/N-PE Test voltage (2sec)
Allowable Operation Temp.	-25°C to 85°C
Climatic Category	25/085/21 acc. to IEC 60068-1
Degree of Protection	from front side IP 40 acc. to IEC 60529
Protection Class	Suitable for appliances with protection class 1 acc. to IEC 61140
Terminal	Quick connect terminals 6.3 x 0.8 mm
Panel Thickness s	Screw: max 8 mm Mounting screw torque max 0.5Nm
Material: Housing	Thermoplastic, black, UL 94V-0

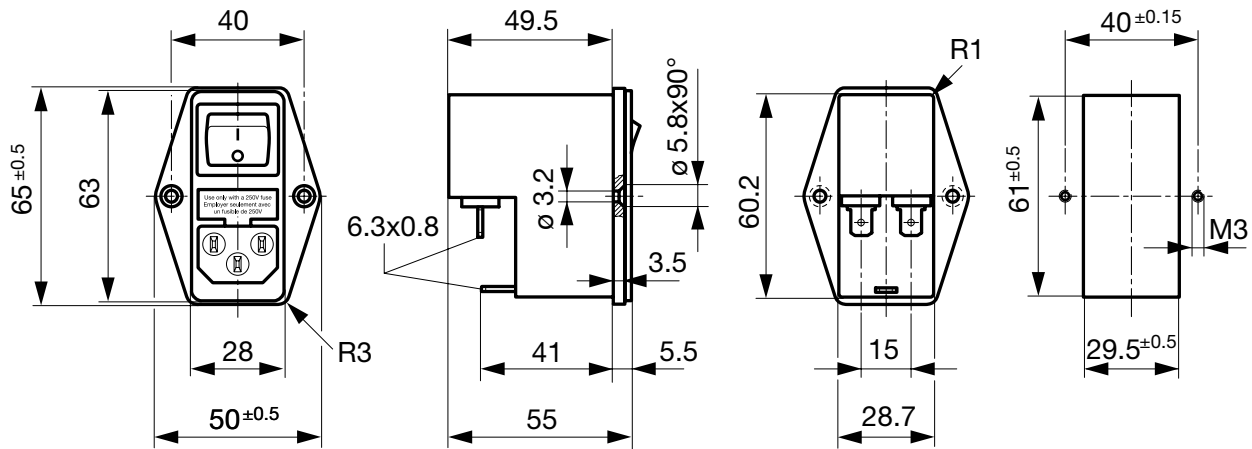
Appliance-Inlet/-Outlet	C14 acc. to IEC/EN 60320-1, UL 498, CSA C22.2 no. 42 (for cold conditions) pin-temperature 70 °C, 10A, Protection Class 1
Fuseholder	2-pole, Shocksafe category PC2 acc. to IEC 60127-6, for fuse-links 5 x 20mm
Rated Power Acceptance @ Ta 23 °C	5 x 20: 1.6W (2-pole)
Power Acceptance @ Ta > 23°C	Admissible power acceptance at higher ambient temperature see derating curves
Line Switch	Rocker switch 2-pole, non-illuminated, acc. to IEC 61058-1 <a href="#">Technical details</a>
Line Filter	Standard and Medical Version, IEC 60939, IEC 60601-1, UL 1283, UL 544, EN 133 200, CSA C22.2 no. 8 <a href="#">Technical details</a>
MTBF	> 1'700'000h acc. to MIL-HB-217 F

### Dimensions

Case 45  
recommend for new designs



Case 50  
on phase-out

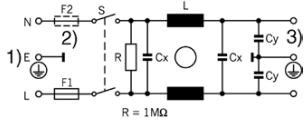


### Technical Data of Filter-Components

Rated Current [A]	Filter-Type	Inductances L [mH]	Capacitance CX [nF]	Capacitance CY [nF]	R [MΩ]
1	Standard Version	2 x 10	68	2.2	1
2	Standard Version	2 x 4	68	2.2	1
4	Standard Version	2 x 1.5	68	2.2	1
6	Standard Version	2 x 0.8	68	2.2	1
10	Standard Version	2 x 0.3	68	2.2	1
1	Medical Version (M5)	2 x 10	68	-	1
2	Medical Version (M5)	2 x 4	68	-	1
4	Medical Version (M5)	2 x 1.5	68	-	1
6	Medical Version (M5)	2 x 0.8	68	-	1
10	Medical Version (M5)	2 x 0.3	68	-	1

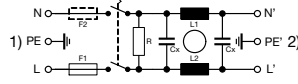
Diagrams

Standard version



- 1) Line
- 2) only FKI
- 3) Load

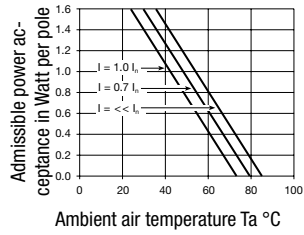
Medical version



- 1) Line
- 2) Load

Derating Curves

2-pole

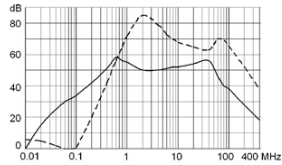


Attenuation Loss

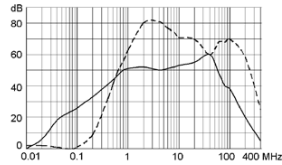
Standard version

--- differential mode    \_\_\_\_ common mode

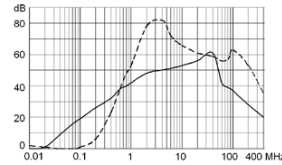
1 A



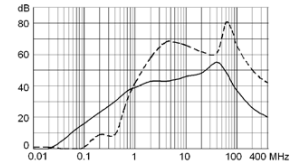
2 A



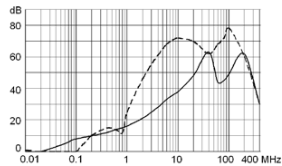
4 A



6 A

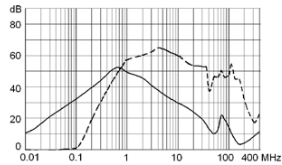


10 A

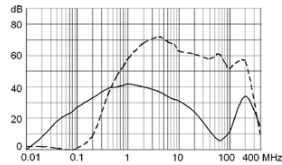


Medical version (M5)

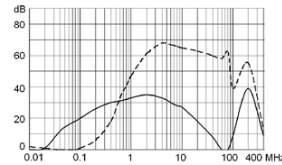
1 A



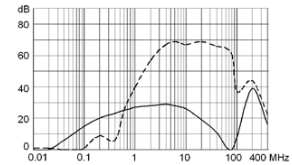
2 A



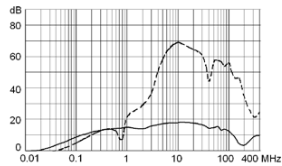
4 A



6 A



10 A



## Variants

Socket and fuse drawer included

Type	Rated Current [A]	Filter-Type	Fuseholder	Line Switch	Housing	Material: Housing	Comment	Order Number
FKI	1	Standard Version	2-pole	2-pole	45	Aluminum	-	4304.4061
FKI	2	Standard Version	2-pole	2-pole	45	Aluminum	-	4304.4062
FKI	4	Standard Version	2-pole	2-pole	45	Aluminum	-	4304.4063
FKI	6	Standard Version	2-pole	2-pole	45	Aluminum	-	4304.4064
FKI	10	Standard Version	2-pole	2-pole	45	Aluminum	-	4304.4065
FKI	1	Medical Version (M5)	2-pole	2-pole	45	Aluminum	-	4304.4091
FKI	2	Medical Version (M5)	2-pole	2-pole	45	Aluminum	-	4304.4092
FKI	4	Medical Version (M5)	2-pole	2-pole	45	Aluminum	-	4304.4092
FKI	6	Medical Version (M5)	2-pole	2-pole	45	Aluminum	-	4304.4094
FKI	10	Medical Version (M5)	2-pole	2-pole	45	Aluminum	-	4304.4095
FKI	1	Standard Version	2-pole	2-pole	50	Nickel plated steel	1)	4304.4021
FKI	2	Standard Version	2-pole	2-pole	50	Nickel plated steel	1)	4304.4022
FKI	4	Standard Version	2-pole	2-pole	50	Nickel plated steel	1)	4304.4023
FKI	6	Standard Version	2-pole	2-pole	50	Nickel plated steel	1)	4304.4024
FKI	10	Standard Version	2-pole	2-pole	50	Nickel plated steel	1)	4304.4025
FKI	1	Medical Version (M5)	2-pole	2-pole	50	Nickel plated steel	1)	4304.4066
FKI	2	Medical Version (M5)	2-pole	2-pole	50	Nickel plated steel	1)	4304.4067
FKI	4	Medical Version (M5)	2-pole	2-pole	50	Nickel plated steel	1)	4304.4068
FKI	6	Medical Version (M5)	2-pole	2-pole	50	Nickel plated steel	1)	4304.4069
FKI	10	Medical Version (M5)	2-pole	2-pole	50	Nickel plated steel	1)	4304.4070

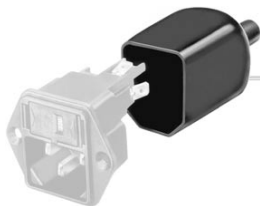
1) Versions with nickel plated steel enclosure are on phase-out. For new designs we recommend the versions with aluminum enclosure.

## Packaging unit

10 Pcs

## Accessories

### Description



Assorted Covers  
Rear Cover

0859.0074

## Mating Outlets/Connectors

### Category / Description

#### Appliance Outlet Overview complete



IEC Appliance Outlet F, Screw-on Mounting, Front Side, Solder or Quick-connect Terminal	4787
IEC Appliance Outlet F, Snap-in Mounting, Front Side, Solder or Quick-connect Terminal	4788
IEC Appliance Outlet F or H, Screw-on Mounting, Front Side, Solder, PCB or Quick-connect Terminal	5091
IEC Appliance Outlet F or H, Screw-on Mounting, Front Side, Solder or Quick-connect Terminal	5092

#### Appliance Outlet further types to FKI

#### Connector Overview complete



IEC Connector C15, Rewireable, Straight	0101
IEC Connector C15A, Rewireable, Straight	0102
IEC Connector C15A, Rewireable, Straight	0102-G
IEC Connector C15A, Rewireable, Angled	0112
IEC Connector C13, Rewireable, Angled	4012

#### Connector further types to FKI

...

**Category / Description**

[Power Cord Overview complete](#)



Power Cord with IEC Connector C13, Angled	0311
Power Cord with IEC Connector C13, Angled	3011
Power Cord with IEC Connector C13, Angled	3012
Power Cord with IEC Connector C13, Angled	3013
Power Cord with IEC Connector C13	3020
<a href="#">Power Cord further types to FKI</a>	...

