

PLEASE CHECK WWW.MOLEX.COM FOR LATEST PART INFORMATION

Part Number: [0940304021](#)
Status: **Active**
Description: Quick Disconnect, Female for 0.50-1.00mm² (18-20 AWG) wire, Accepts 4.75mm (.187") x 0.80mm (.031") Tab

Documents:

[Drawing \(PDF\)](#) [Product Specification PS-94030-002 \(PDF\)](#)
[Product Specification PS-94030-001 \(PDF\)](#) [RoHS Certificate of Compliance \(PDF\)](#)

General

Product Family	Quick Disconnects
Series	94030
Crimp Quality Equipment	Yes
Product Name	N/A
Type	Quick Disconnect

Physical

Barrel Type	Open
Gender	Female
Glow-Wire Compliant	No
Insulation	None
Lock to Mating Part	None
Material - Metal	Brass
Material - Plating Mating	Tin
Material - Plating Termination	Tin
Orientation	Straight
Packaging Type	Reel
Plating min: Mating (µin)	80
Plating min: Mating (µm)	2
Plating min: Termination (µin)	80
Plating min: Termination (µm)	2
Polarized to Mating Part	Yes
Tab Thickness	0.81mm (.032")
Tab Width	4.75mm (.187")
Temperature Range - Operating	-40°C to +80°C
Termination Interface: Style	Crimp or Compression
Wire Insulation Diameter	3.30mm (.130") max.
Wire Size AWG	18, 20, 22, 24
Wire Size mm ²	0.50-1.00

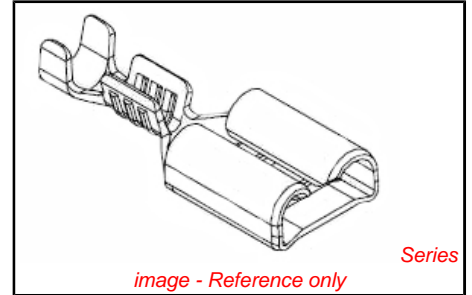
Electrical

Voltage - Maximum	250V
-------------------	------

Material Info

Reference - Drawing Numbers

Product Specification	PS-94030-001, PS-94030-002
Sales Drawing	SD-94030-002



EU RoHS

ELV and RoHS Compliant
REACH SVHC Contains SVHC: No
Halogen-Free Status
Halogen-Free

China RoHS



Need more information on product environmental compliance?

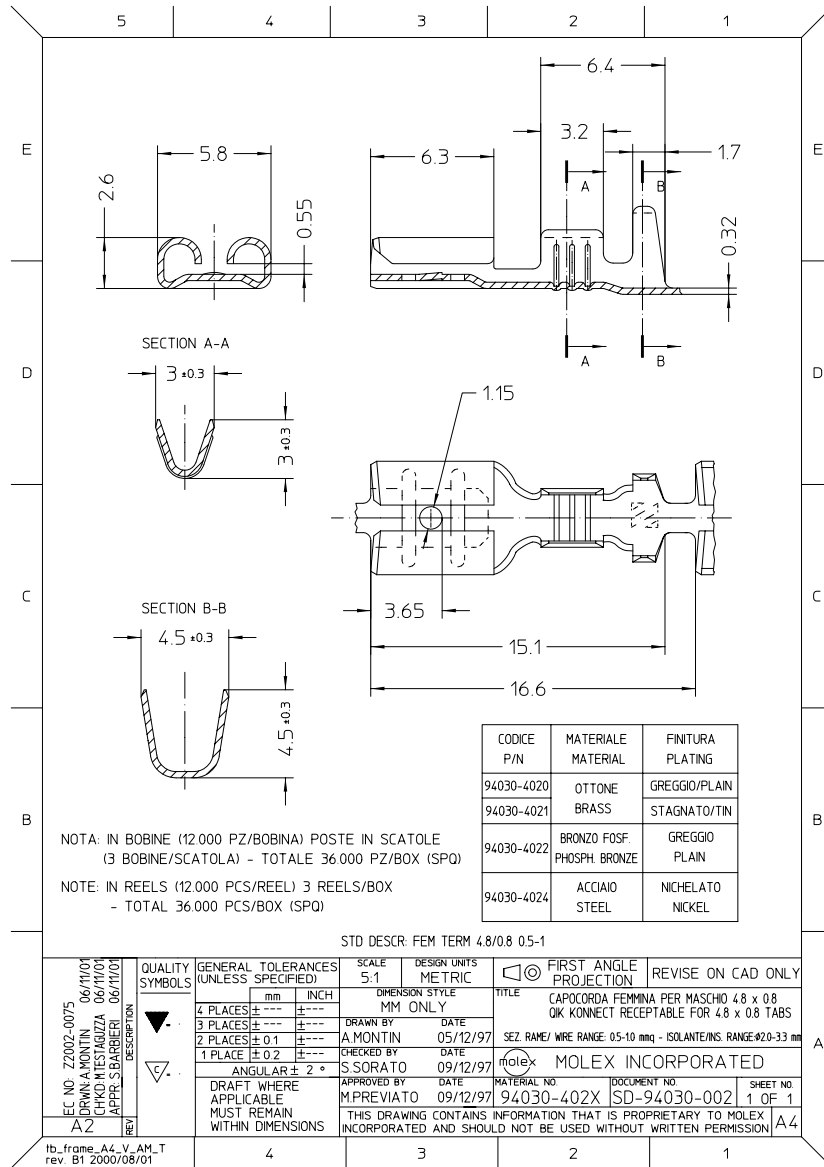
Email productcompliance@molex.com
 For a multiple part number RoHS Certificate of Compliance, [click here](#)

Please visit the [Contact Us](#) section for any non-product compliance questions.

Search Parts in this Series
 94030Series

Use With
 940956030 , 940956040

PLEASE CHECK WWW.MOLEX.COM FOR LATEST PART INFORMATION



IEC NO. Z2002-0075 DRAWN BY A.MONTIN 06/11/01 CHECKED BY MESTAGUIZA 06/11/01 APPR. BY S.BARBIERI 06/11/01 REV. DESCRIPTION	QUALITY SYMBOLS	GENERAL TOLERANCES (UNLESS SPECIFIED)	SCALE 5:1	DESIGN UNITS METRIC	FIRST ANGLE PROJECTION	REVISE ON CAD ONLY																		
		<table border="1"> <tr> <th></th> <th>mm</th> <th>INCH</th> </tr> <tr> <td>4 PLACES ±</td> <td>±.01</td> <td>±.0004</td> </tr> <tr> <td>3 PLACES ±</td> <td>±.02</td> <td>±.0008</td> </tr> <tr> <td>2 PLACES ±</td> <td>±.03</td> <td>±.0012</td> </tr> <tr> <td>1 PLACE ±</td> <td>±.04</td> <td>±.0016</td> </tr> <tr> <td colspan="3">ANGULAR ± 2°</td> </tr> </table>		mm	INCH	4 PLACES ±	±.01	±.0004	3 PLACES ±	±.02	±.0008	2 PLACES ±	±.03	±.0012	1 PLACE ±	±.04	±.0016	ANGULAR ± 2°			DIMENSION STYLE MM ONLY	TITLE CAPOCORDA FEMMINA PER MASCHIO 4.8 x 0.8 QK CONNECT RECEPTABLE FOR 4.8 x 0.8 TABS	MOLEX INCORPORATED	SEZ. RAME/ WIRE RANGE: 05-10 mmq - ISOLANTE/INS. RANGE: #20-33 mm
			mm	INCH																				
		4 PLACES ±	±.01	±.0004																				
3 PLACES ±	±.02	±.0008																						
2 PLACES ±	±.03	±.0012																						
1 PLACE ±	±.04	±.0016																						
ANGULAR ± 2°																								
DRAFT WHERE APPLICABLE MUST REMAIN WITHIN DIMENSIONS	APPROVED BY M.PREVIATO 09/12/97	DATE 09/12/97	MATERIAL NO. 94030-402X	DOCUMENT NO. SD-94030-002	SHEET NO. 1 OF 1																			
THIS DRAWING CONTAINS INFORMATION THAT IS PROPRIETARY TO MOLEX INCORPORATED AND SHOULD NOT BE USED WITHOUT WRITTEN PERMISSION																								

Ib_frame_A4_V_AM_T
rev B1 2000/08/01