

PLEASE CHECK WWW.MOLEX.COM FOR LATEST PART INFORMATION

Part Number: [0887625400](#)
Status: **Active**
Overview: [serial_ata_products](#)
Description: 1.27mm (.050") Pitch Serial ATA Straight-to-Right Angle Signal Cable Assembly, 0.50m (1.64') Length, Red, Leadfree

Documents:

[Drawing \(PDF\)](#) [RoHS Certificate of Compliance \(PDF\)](#)

General

Product Family Cable Assemblies
 Series [88755](#)
 Comments Generation 2 (300MB/s)
 Connector to Connector Serial ATA-to-Serial ATA
 Overview [serial_ata_products](#)
 Product Name Serial ATA

Physical

Cable Length 0.50m (1.64')
 Circuits (Loaded) 7
 Color - Resin Black, Natural
 Gender Female-Female
 Lock to Mating Part Yes
 Material - Metal Phosphor Bronze
 Material - Resin Low Density Polyethylene, Polyester
 Packaging Type Bag
 Pitch - Mating Interface (in) 0.050 In
 Pitch - Mating Interface (mm) 1.27 mm
 Single Ended No
 Termination Interface: Style Surface Mount
 Wire Insulation Diameter N/A
 Wire Size AWG 26
 Wire/Cable Type PVC

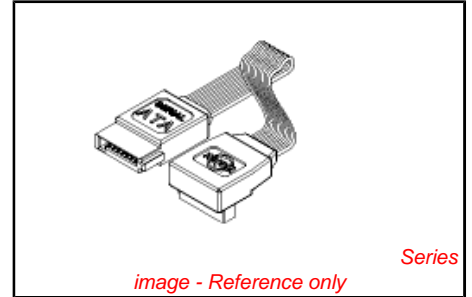
Electrical

Current - Maximum per Contact 1.5A
 Impedance 100 ohms
 Shielded Yes
 Voltage - Maximum 40V

Material Info

Reference - Drawing Numbers

Sales Drawing SD-88755-009, SD-88762-5400



EU RoHS

ELV and RoHS Compliant

REACH SVHC

Not Reviewed

Halogen-Free

Status

Not Reviewed

Need more information on product environmental compliance?

Email productcompliance@molex.com
 For a multiple part number RoHS Certificate of Compliance, [click here](#)

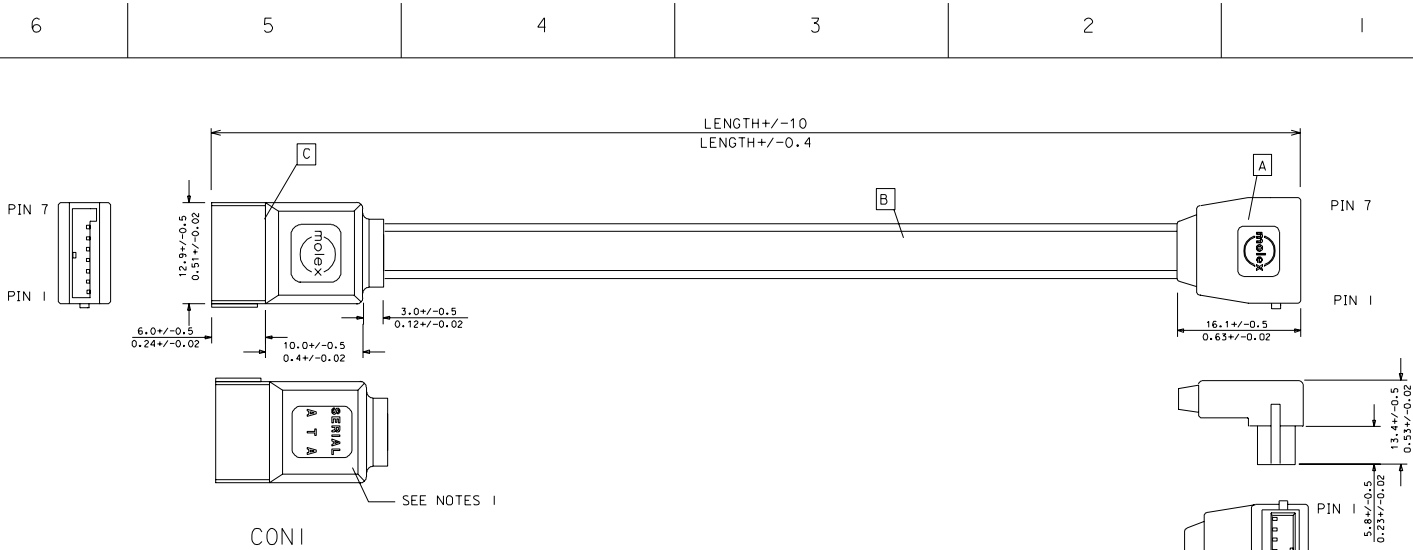
Please visit the [Contact Us](#) section for any non-product compliance questions.

China RoHS

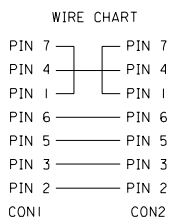


Search Parts in this Series
[88755Series](#)

PLEASE CHECK WWW.MOLEX.COM FOR LATEST PART INFORMATION



NOTE:
 PHYSICAL
 1. INNER MOLD WITH PE RESIN 887800008;
 OUTER MOLD WITH BLACK PVC RESIN 887800019.
 2. INNER MOLD WITH PE RESIN 887800008;
 OUTER MOLD WITH BLACK PVC RESIN 887800042.
 ELECTRICAL PERFORMANCE:
 3. DIELECTRONIC STRENGTH:500V DC
 4. INSULATION RESISTANCE:100M OHMS Min.
 5. CONDUCTIVE RESISTOR: 2 OHMS Max.



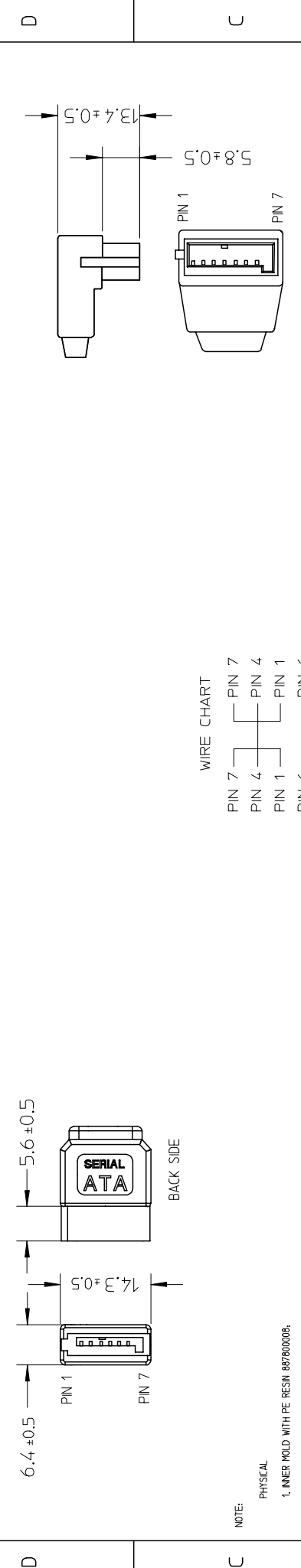
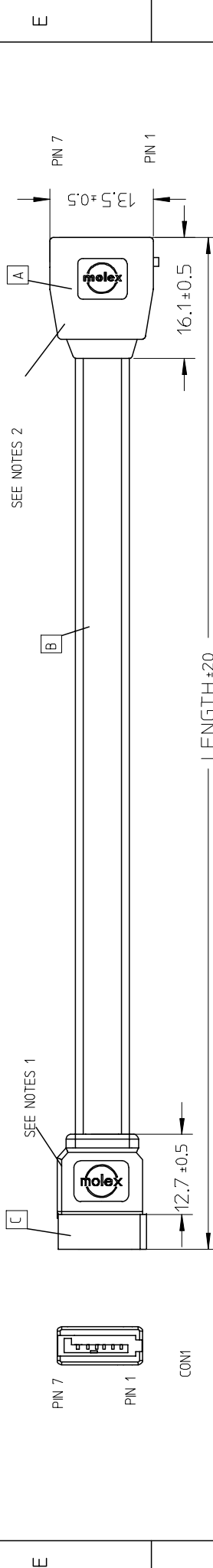
887625410	1000mm	40 INCH
887625400	500mm	20 INCH
MOLEX P/N	LENGTH	LENGTH

ITEM	DESCRIPTION	L	QTY.
C	S-ATA STRAIGHT CONN. 675380001		1
B	2PX26AWG S-ATA CABLE RED 887808052	N/A	1
A	S-ATA R/A CONN. 887899745		1

EC NO. DRWN: Louis 04/02/17 CHK: APPR:	DESCRIPTION REV	QUALITY SYMBOLS MAJOR ▼ = 0 CRITICAL ▽ = 0	GENERAL TOLERANCES: (UNLESS SPECIFIED)	SCALE N.T.S	DESIGN UNITS <input checked="" type="checkbox"/> mm <input type="checkbox"/> INCH	THIRD ANGLE PROJECTION	DIMENSIONS: <input checked="" type="checkbox"/> mm <input type="checkbox"/> INCH <input type="checkbox"/> mm ONLY	SHT	REV													
			<table border="1"> <tr> <th></th> <th>mm</th> <th>INCH</th> </tr> <tr> <td>4 PLACES</td> <td>±0.1</td> <td>±.</td> </tr> <tr> <td>3 PLACES</td> <td>±0.1</td> <td>±.</td> </tr> <tr> <td>2 PLACES</td> <td>±0.1</td> <td>±.</td> </tr> <tr> <td>1 PLACE</td> <td>±0.1</td> <td>±.</td> </tr> </table>		mm	INCH	4 PLACES	±0.1	±.	3 PLACES	±0.1	±.	2 PLACES	±0.1	±.	1 PLACE	±0.1	±.	DRAWN BY & DATE Louis Chen 03/11/24 CHECKED BY & DATE Luky Xu 03/11/24 APPROVED BY & DATE Stepher Guo 03/11/24	TITLE: S-ATA STRAIGHT TO RIGHT ANGEL SIGNAL RED CABLE, 0.5M, 1M		
	mm	INCH																				
4 PLACES	±0.1	±.																				
3 PLACES	±0.1	±.																				
2 PLACES	±0.1	±.																				
1 PLACE	±0.1	±.																				
A			ANGULAR: ± 0	CAD FILENAME J6254-XX .DGN	MATERIAL NO. 8876254XX	DRAWING NO. SD-88755-009	SHEET NO. 1 OF 1	THIS DRAWING CONTAINS INFORMATION THAT IS PROPRIETARY TO MOLEX INCORPORATED AND SHOULD NOT BE USED WITHOUT WRITTEN PERMISSION.														

WBORD_A.BOR REV A
 97/05/14 LEVEL 3

E
D
C
B
A



NOTE:

PHYSICAL

1. INNER MOLD WITH PE RESIN 887800008, OUTER MOLD WITH BLACK PVC RESIN 887800019.
2. INNER MOLD WITH PE RESIN 887800008, OUTER MOLD WITH BLACK PVC RESIN 887800042.

ELECTRICAL PERFORMANCE:

3. DIELECTRIC STRENGTH: 500V DC
4. INSULATION RESISTANCE: 100M OHMS MIN.
5. CONDUCTIVE RESISTOR: 2 OHMS MAX.

ITEM	DESCRIPTION	SCALE	DESIGN UNITS	THIRD ANGLE PROJECTION	QTY.
C	S-ATA STRAIGHT CONN. 674898002	---	METRIC		1
B	2PX26AWG S-ATA CABLE RED 887808052	---	METRIC		1
A	S-ATA R/A CONN. 887899745	---	METRIC		1

GENERAL TOLERANCES (UNLESS SPECIFIED)	DIMENSION STYLE	DATE	TITLE
4 PLACES ± 0.15mm	MM ONLY	2005/03/24	S-ATA ST TO R/A RED 1.0M CABLE ASSY
3 PLACES ± 0.25mm		2005/03/24	
2 PLACES ± 0.30mm			
1 PLACE ± 0.40mm			
ANGULAR ± 0.1°			

QUALITY SYMBOLS	REVISION	DESCRIPTION
▲=0	B	ENTER DESCRIPTION
◻=0		FC NO: DG2005-0120
		DRWN: JLIU13
		CHKD: TEDDY
		APP: TKAN
		2005/03/24
		2005/04/01

DOCUMENT NO.	SHEET NO.
887625410	1 OF 1
SD-88762-5410	
THIS DRAWING CONTAINS INFORMATION THAT IS PROPRIETARY TO MOLEX INCORPORATED AND SHOULD NOT BE USED WITHOUT WRITTEN PERMISSION	

MATERIAL NO.	DOCUMENT NO.	SHEET NO.
887625410	SD-88762-5410	1 OF 1