

PLEASE CHECK WWW.MOLEX.COM FOR LATEST PART INFORMATION

Part Number: [0857290101](#)
Status: **Active**
Overview: [magnetic modular jacks](#)
Description: HyperJack™ 1000 PoE+ PSE Integrated Connector Module, 2x4, With LEDs

Documents:

[3D Model](#) [RoHS Certificate of Compliance \(PDF\)](#)
[Drawing \(PDF\)](#)

General

Product Family	Modular Jacks/Plugs
Series	85729
Component Type	PCB Jack
Magnetic	Yes
More Detailed Tech Information	*For product specifications please contact your Molex sales representative
Overview	magnetic modular jacks
Performance Category	5e
Power over Ethernet (PoE)	PoE+
Product Name	HyperJack™PoE

Physical

Boot Color	N/A
Color - Resin	Black
Durability (mating cycles max)	750
Inverted / Top Latch	Yes
Lightpipes/LEDs	LEDs
Material - Metal	Brass, Copper Alloy
Material - Plating Mating	Gold
Material - Plating Termination	Tin
Material - Resin	Thermoplastic Polyurethane
Orientation	Right Angle (Side Entry)
PCB Locator	Yes
PCB Retention	Yes
Packaging Type	Tray
Pitch - Mating Interface (in)	0.040 In
Pitch - Mating Interface (mm)	1.02 mm
Pitch - Term. Interface (in)	0.040 In
Pitch - Term. Interface (mm)	1.02 mm
Plating min: Mating (µin)	30
Plating min: Mating (µm)	0.76
Plating min: Termination (µin)	50.8
Plating min: Termination (µm)	1.27
Ports	8
Positions / Loaded Contacts	8/8
Surface Mount Compatible (SMC)	No
Temperature Range - Operating	0°C to +70°C
Termination Interface: Style	Through Hole
Waterproof / Dustproof	No
Wire/Cable Type	N/A

Electrical

Current - Maximum per Contact	1.5A
Grounding to PCB	Yes
Grounding to Panel	Yes
Shielded	Yes



image - Reference only

EU RoHS ELV and RoHS Compliant REACH SVHC Not Reviewed Halogen-Free Status Not Reviewed	China RoHS 
---	--

Need more information on product environmental compliance?

Email productcompliance@molex.com
 For a multiple part number RoHS Certificate of Compliance, [click here](#)

Please visit the [Contact Us](#) section for any non-product compliance questions.

Search Parts in this Series
85729Series

Mates With
Plugs according to IEC 60603-7

Voltage - Maximum

48V

Material Info

Reference - Drawing Numbers

Packaging Specification

PK-85729-135

Product Specification

RPS-85719-001

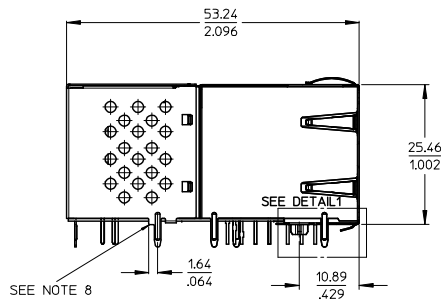
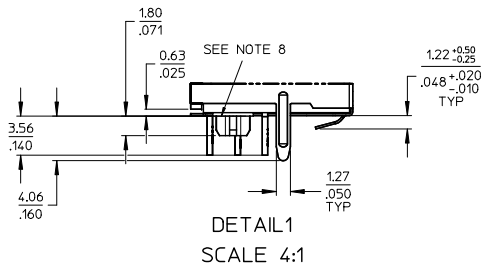
Sales Drawing

SD-85729-101

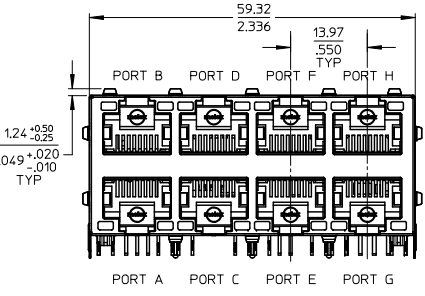
This document was generated on 06/08/2010

PLEASE CHECK WWW.MOLEX.COM FOR LATEST PART INFORMATION

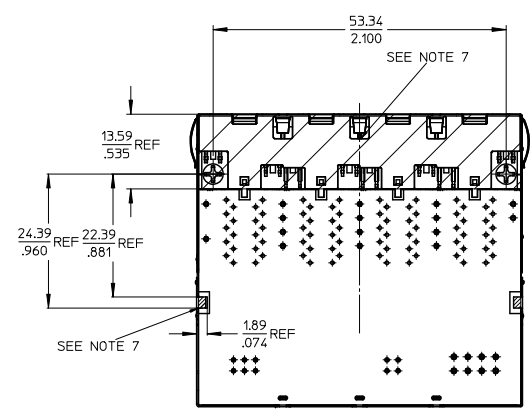
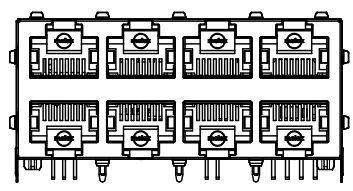
13 12 11 10 9 8 7 6 5 4 3 2 1



FRONT VIEW HYPER JACK 1000 POE+ ICM LED VERSION P/N 85729-0101



FRONT VIEW HYPERJACK 1000POE+ ICM NON LED VERSION P/N 85729-0102



P / N	VERSION
85729-0101	LED VERSION
85729-0102	NON LED VERSION

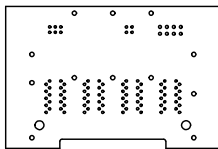
- NOTES:
- SHIELD MATERIAL: BRASS, PLATING: NI PRE-PLATING
 - PLASTIC MATERIAL: NAGASE-D-VALOX 420 SED BLACK, 30%GR, UL 94V-0.5V (PBT)
 - TERMINALS MATERIAL: COPPER ALLOY
RJ45 CONTACT PLATING: 0.76µm GOLD OVER 1.9µm Ni
SOLDER TERMINALS: 3µm Sn
 - JACK TO BE MATED WITH FCC 68.5 PLUGS
 - PRODUCT SPECIFICATION: PS-85719-001
 - PACKAGING SPECIFICATION: PK-85729-101
 - TRACES WITHOUT INSULATION NOT ALLOWED IN THE DASHED AREAS.
(TO AVOID SHORTS TO SHIELD)
 - STAND OFF TO SYSTEM BOARD

ENTER DESCRIPTION EC NO. MG2009-0072 DRAWN: JBADER 2009/08/06 CHKD: MMANGARUDDV 2009/08/06 APPR: SSTE INKE 2009/08/07	QUALITY SYMBOLS ▽=0 ▽=0	GENERAL TOLERANCES (UNLESS SPECIFIED)		DIMENSION STYLE	SCALE	DESIGN UNITS	THIRD ANGLE PROJECTION	
		mm	INCH	MM ONLY	2:1	METRIC		
REV 1	4 PLACES ± --- ± ---	DRAWN BY JBADER 2009/03/12	DATE 2009/03/12	TITLE HYPERJACK 1000 POE+ INTEGRATED CONNECTOR MODULE	SHEET NO. 1 OF 3	MATERIAL NO. SEE BOM	DOCUMENT NO. SD-85729-101	
	3 PLACES ± --- ± ---							CHECKED BY MMANGARUDDV 2009/03/12
	2 PLACES ± 0.25 ± ---							APPROVED BY SSTE INKE 2009/03/12
	1 PLACE ± 0.5 ± ---							
ANGULAR ± 5 °		DRAFT WHERE APPLICABLE MUST REMAIN WITHIN DIMENSIONS		MOLEX INCORPORATED				

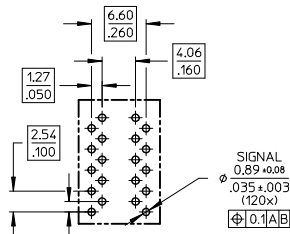
tb_frame_A2_P_AM_1
Rev. E 2006/04/15

12 11 10 9 8 7 6 5 4 3 2 1

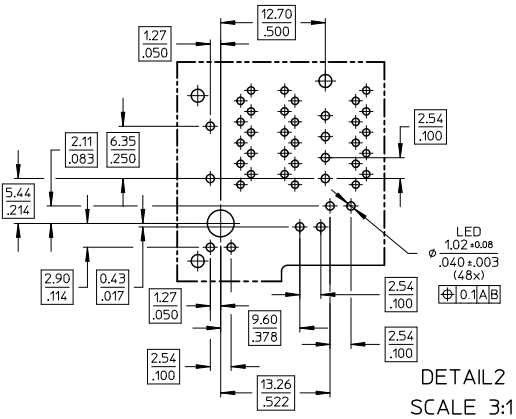
FOOT PRINT FOR NON LED VERSION (85729-0003)
MISSING DIMENSIONS SEE LED VERSION



SCALE 1:1

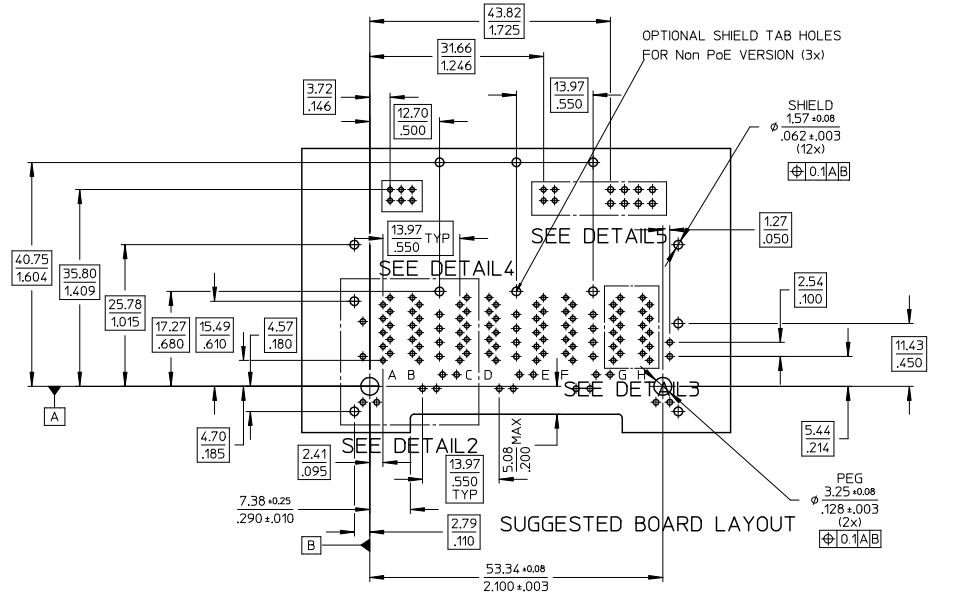


DETAIL 3
SCALE 3:1

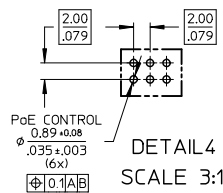


DETAIL 2
SCALE 3:1

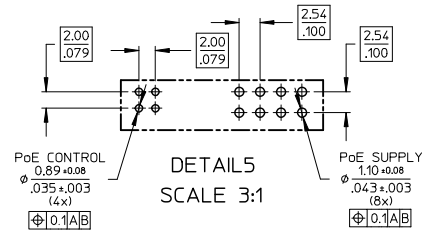
FOOT PRINT OUT FOR
LED VERSION



SUGGESTED BOARD LAYOUT



DETAIL 4
SCALE 3:1



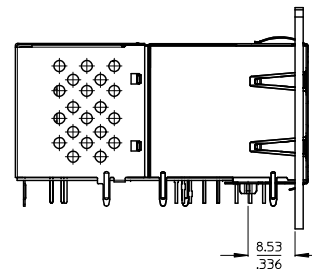
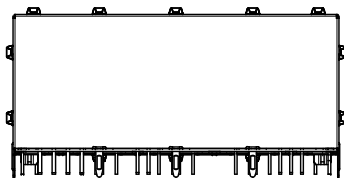
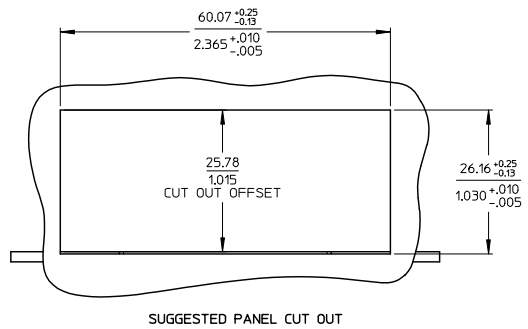
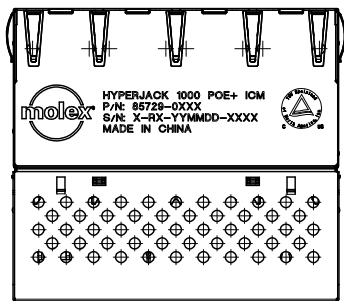
DETAILS 5
SCALE 3:1

ENTER DESCRIPTION EC NO: MG2009-0072 2009/08/06 DRAWN: JBADER 2009/08/06 CHKD: MMANGARUDOV 2009/08/06 APPR: SSTE INKE 2009/08/07	QUALITY SYMBOLS ▽=0 ▽=0	GENERAL TOLERANCES (UNLESS SPECIFIED) mm INCH		DIMENSION STYLE MM ONLY		SCALE 2:1	DESIGN UNITS METRIC	THIRD ANGLE PROJECTION		
		4 PLACES ± --- ± ---	3 PLACES ± --- ± ---	2 PLACES ± 0.25 ± ---	1 PLACE ± 0.5 ± ---	ANGULAR ± 5 °	DRAFT WHERE APPLICABLE MUST REMAIN WITHIN DIMENSIONS	DRAWN BY JBADER DATE 2009/03/12	CHECKED BY MMANGARUDOV DATE 2009/03/12	APPROVED BY SSTE INKE DATE 2009/03/12
		MATERIAL NO.			SEE SHEET 1		DOCUMENT NO. SD-85729-101		SHEET NO. 2 OF 3	
		TITLE HYPERJACK 1000 POE+ INTEGRATED CONNECTOR MODULE								MOLEX INCORPORATED

PRINTING
LED VERSION
HYPERJACK 1000 POE+ ICM
P/N: 85729-0101
S/N: X-RX-YYMMDD-XXXX
MADE IN CHINA

PRINTING
NON LED VERSION
HYPERJACK 1000 POE+ ICM
P/N: 85729-0102
S/N: X-RX-YYMMDD-XXXX
MADE IN CHINA

PRINTING



- NOTES:
1 - PRINTING MARKED BY LASER
2 - INSCRIPTION:
1st LINE: PART NAME
2nd LINE: PART NUMBER
3rd LINE: SERIES NUMBER -> MANUFACTURER ID - CONNECTOR REVISION -
DATE CODE (YEAR, MONTH, DAY) - CONSECUTIVE NUMBER
4th LINE: COUNTRY OF ORIGIN
3 - TUV LOGO

ENTER DESCRIPTION IEC NO: MG2009-0072 DRAWN: IBANDER 2009/08/06 CHKD: MMANGARUDOV 2009/08/06 APPR: SSTEINKE 2009/08/07	QUALITY SYMBOLS 	GENERAL TOLERANCES (UNLESS SPECIFIED)		DIMENSION STYLE MM ONLY	SCALE 2:1	DESIGN UNITS METRIC	THIRD ANGLE PROJECTION		
		4 PLACES ± --- ± --- 3 PLACES ± --- ± --- 2 PLACES ± 0.25 ± --- 1 PLACE ± 0.5 ± --- ANGULAR ± 5 °	mm INCH	DRAWN BY JBADER	DATE 2009/03/12	TITLE HYPERJACK 1000 POE+ INTEGRATED CONNECTOR MODULE			
		DRAFT WHERE APPLICABLE MUST REMAIN WITHIN DIMENSIONS		CHECKED BY MMANGARUDOV	DATE 2009/03/12	APPROVED BY SSTEINKE			
		SEE SHEET 1		MATERIAL NO. SD-85729-101	DATE 2009/03/12	MOLEX INCORPORATED DOCUMENT NO.			
				SHEET NO. 3 OF 3					