

PLEASE CHECK WWW.MOLEX.COM FOR LATEST PART INFORMATION

Part Number: [0008520105](#)
Status: **Active**
Overview: [kk](#)
Description: KK® Cat Ear Crimp Terminal 8088, 22-30 AWG, Tin, Reel

Documents:

[Drawing \(PDF\)](#) [RoHS Certificate of Compliance \(PDF\)](#)
[Product Specification PS-99020-0088 \(PDF\)](#)

General

Product Family Crimp Terminals
 Series [8088](#)
 Crimp Quality Equipment Yes
 Overview [kk](#)
 Product Name Cat Ear, KK®

Physical

Gender Female
 Material - Metal Phosphor Bronze
 Material - Plating Mating Tin
 Material - Plating Termination Tin
 Packaging Type Reel
 Plating min: Mating (µin) 40
 Plating min: Mating (µm) 1
 Plating min: Termination (µin) 40
 Plating min: Termination (µm) 1
 Wire Insulation Diameter 1.57mm (.062") max.
 Wire Size AWG 22, 24, 26, 28, 30
 Wire Size mm² N/A

Solder Process Data

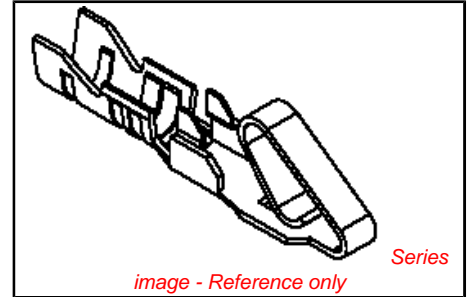
Lead-free Process Capability Wave Capable (TH only)

Material Info

Old Part Number 8088CP914

Reference - Drawing Numbers

Product Specification PS-99020-0088
 Sales Drawing SD-8088C-(***)*



EU RoHS

ELV and RoHS Compliant

REACH SVHC Contains SVHC: No

Halogen-Free Status

Halogen-Free

Need more information on product environmental compliance?

Email productcompliance@molex.com
 For a multiple part number RoHS Certificate of Compliance, [click here](#)

Please visit the [Contact Us](#) section for any non-product compliance questions.

China RoHS



Search Parts in this Series

[8088Series](#)

Use With

[2695](#) , [5051](#) , [6471](#)

Application Tooling | FAQ

Tooling specifications and manuals are found by selecting the products below. Crimp Height Specifications are then contained in the Application Tooling Specification document.

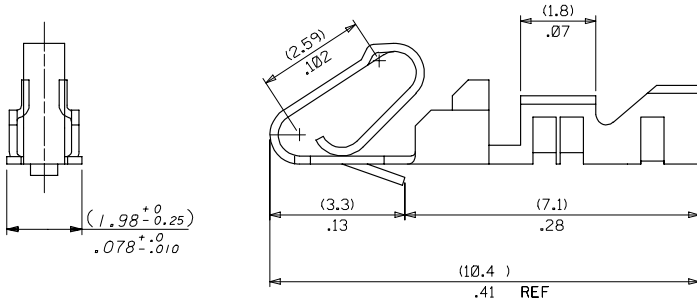
Global

Description	Product #
Terminator Die	0011402102
Mini-Mac™ for KK®	0638887000
Cat Ear and Anti Fish Hook Crimp Terminals, 22-30 AWG	

PLEASE CHECK WWW.MOLEX.COM FOR LATEST PART INFORMATION

10 9 8 7 6 5 4 3 2 1

PART No.	ENG No.	FORM	SEE FINISH NOTES
40-07-0813	8088C-(999)L	LOOSE	(999)
40-07-0812	8088C-(999)	CHAIN	(999)
08-52-0106	8088C-(P902)L	LOOSE	(P902)
08-52-0105	8088C-(P902)	CHAIN	(P902)
08-52-0108	8088C-(102)L	LOOSE	(102)
08-52-0107	8088C-(102)	CHAIN	(102)



FINISH NOTES:

- (999) - UNPLATED
- (P902) - HOT TIN DIP (1.0-2.5um)
.00004-.00010
- (102) - ELECTRO TIN PLATE (0.005)/.0002 MIN OVER
(0.003)/.00013 MIN COPPER (POST PLATE)

NOTES:

1. SAME AS SD-8088-(***)* EXCEPT CAT EARS
2. FOR 22-30 AWG. WIRE, (1.57)/.062 MAX DIA INSULATION.
3. MATERIAL; (0.20+0.01)/.008±.0004 THICK PHOS BRONZE ALLOY 510 TENSILE: 88 - 103M PSI
4. THIS PART CONFORMS TO PROD.SPEC.99020-0088

ADDED END VIEW IEC NO: E2007-0218 TDRWN: JDENNEHY 2006/09/15 CHKD: MORIARTY 2006/09/15 APPR: JDENNEHY 2006/10/11	QUALITY SYMBOLS ▽=0 ▽=0	GENERAL TOLERANCES (UNLESS SPECIFIED)		DIMENSION STYLE MM ONLY		SCALE 10:1	DESIGN UNITS METRIC	THIRD ANGLE PROJECTION
		4 PLACES ± --- ± --- 3 PLACES ± --- ± .010 2 PLACES ± 0.25 ± .020 1 PLACE ± 0.51 ± --- ANGULAR ±1/2°	DRAWN BY T. MAHON 1998/10/26	DATE 1998/10/26	TITLE TERMINAL - ANTI FISH HOOKING KK .100 CTR REF WITH CAT EARS		MOLEX INCORPORATED	
DRAFT WHERE APPLICABLE MUST REMAIN WITHIN DIMENSIONS		SEE CHART		MATERIAL NO. SD-8088C-(***)*		DOCUMENT NO.		SHEET NO. 1 OF 1
THIS DRAWING CONTAINS INFORMATION THAT IS PROPRIETARY TO MOLEX INCORPORATED AND SHOULD NOT BE USED WITHOUT WRITTEN PERMISSION								

9 8 7 6 5 4 3 2 1