

**PLEASE CHECK WWW.MOLEX.COM FOR LATEST PART INFORMATION**

**Part Number:** [0674910025](#)  
**Status:** **Active**  
**Overview:** Serial ATA Products  
**Description:** 1.27mm (.050") Pitch Serial ATA High Speed Header, Through Hole, Vertical, 7 Circuits, Gold (Au) Flash, with 2.35mm (.093") PC Tail Length, Lead-free

**Documents:**

[3D Model](#) [Product Specification PS-67491-001 \(PDF\)](#)  
[Drawing \(PDF\)](#) [RoHS Certificate of Compliance \(PDF\)](#)

**General**

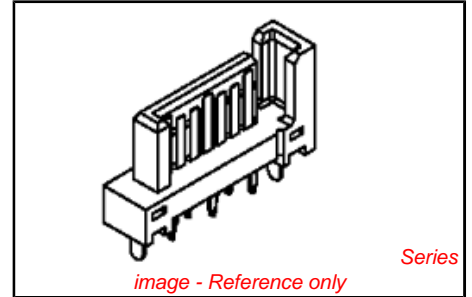
Product Family PCB Headers  
 Series [67491](#)  
 Application Board-to-Board, Wire-to-Board  
 Overview [Serial ATA Products](#)  
 Product Name Serial ATA

**Physical**

Breakaway No  
 Circuits (Loaded) 7  
 Color - Resin Black  
 Durability (mating cycles max) 50  
 First Mate / Last Break Yes  
 Glow-Wire Compliant No  
 Guide to Mating Part No  
 Keying to Mating Part Yes  
 Lock to Mating Part Yes  
 Material - Plating Mating Gold  
 Material - Plating Termination Tin  
 Number of Rows 1  
 Orientation Vertical  
 PC Tail Length (in) 0.093 In  
 PC Tail Length (mm) 2.35 mm  
 PCB Locator Yes  
 PCB Retention Yes  
 PCB Thickness Recommended (in) 0.062 In  
 PCB Thickness Recommended (mm) 1.60 mm  
 Packaging Type Tray  
 Pitch - Mating Interface (in) 0.050 In  
 Pitch - Mating Interface (mm) 1.27 mm  
 Pitch - Term. Interface (in) 0.050 In  
 Pitch - Term. Interface (mm) 1.27 mm  
 Plating min: Mating (µin) 2  
 Plating min: Mating (µm) 0.05  
 Plating min: Termination (µin) 50.8  
 Plating min: Termination (µm) 1.27  
 Polarized to Mating Part Yes  
 Polarized to PCB Yes  
 Shrouded No  
 Stackable No  
 Surface Mount Compatible (SMC) No  
 Temperature Range - Operating -35°C to +85°C  
 Termination Interface: Style Through Hole

**Electrical**

Current - Maximum per Contact 1.5A



*image - Reference only*

**EU RoHS**

**ELV and RoHS Compliant**

**REACH SVHC**

Not Reviewed

**Halogen-Free**

**Status**

**Not Halogen-Free**

**Need more information on product environmental compliance?**

Email [productcompliance@molex.com](mailto:productcompliance@molex.com)  
 For a multiple part number RoHS Certificate of Compliance, [click here](#)

Please visit the [Contact Us](#) section for any non-product compliance questions.

**China RoHS**



**Search Parts in this Series**

[67491Series](#)

**Mates With**

Serial ATA Signal Connector [67489](#) , [88755](#)

Voltage - Maximum

15V DC

**Solder Process Data**

Lead-free Process Capability

Wave Capable (TH only)

**Material Info**

**Reference - Drawing Numbers**

Product Specification

PS-67491-001

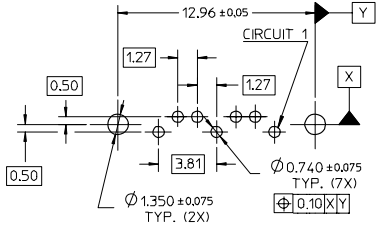
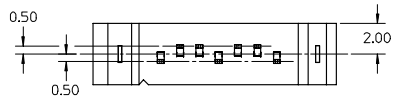
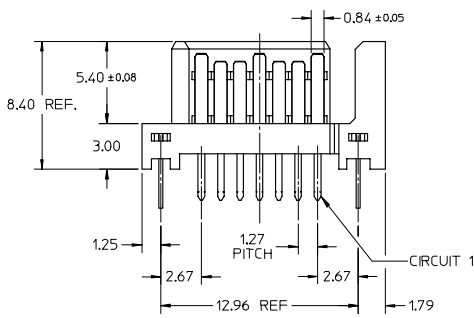
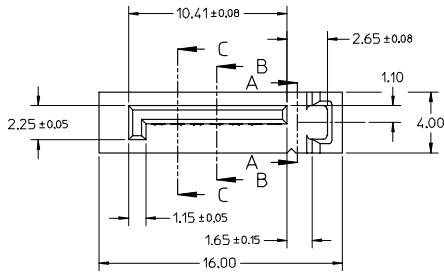
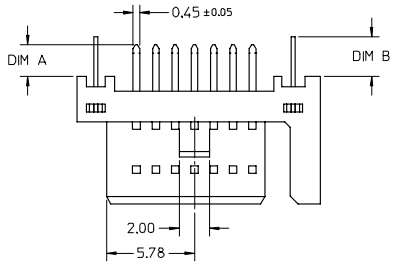
Sales Drawing

SD-67491-001

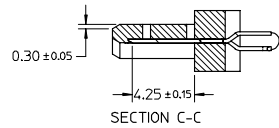
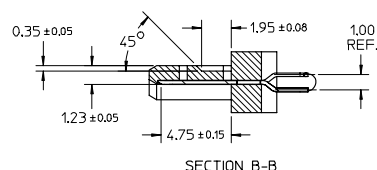
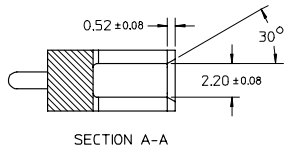
This document was generated on 04/07/2010

**PLEASE CHECK [WWW.MOLEX.COM](http://WWW.MOLEX.COM) FOR LATEST PART INFORMATION**

10 9 8 7 6 5 4 3 2 1

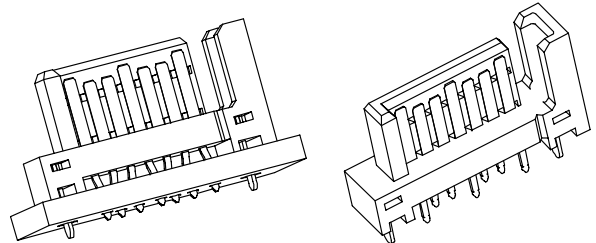


RECOMMENDED P.C.B. LAYOUT (T=1.6mm/2.0mm/2.4mm)



NOTES:

- MATERIAL:  
HOUSING: THERMAL PLASTIC, UL94V-0, COLOR: SEE SHEET2  
TERMINAL/PEG: COPPER ALLOY, THICKNESS=0.25MM
- TERMINAL PLATING:  
CONTACT AREA: (a) GOLD FLASH  
(b) 0.76 MICRON GOLD PLATED  
(c) 0.38 MICRON GOLD PLATED  
SOLDER TAIL:  
1.27 MICRON MIN. MATTE TIN PLATED  
UNDER PLATE:  
1.27 MICRON MIN. NICKEL PLATED
- PEG PLATING:  
1.27 MICRON MIN. MATTE TIN PLATED OVERALL  
1.27 MICRON MIN. NICKEL UNDER PLATED
- PACKAGING SPECIFICATION REFER TO PK-67491-001
- PRODUCT SPECIFICATION REFER TO PS-67491-001
- MATING PART: 67489
- RECOMMENDED PROCESS: WAVE SOLDERING



ADD PART NUMBER EC NO: SH2007-0895 DRAWN: CHEN26 CHECK: JIAN APPR: JICHEN DATE: 2007/06/15 DATE: 2007/06/18 DATE: 2007/06/22	QUALITY SYMBOLS ▽=0 ▽=0	GENERAL TOLERANCES (UNLESS SPECIFIED)		DIMENSION STYLE MM ONLY	SCALE 4:1	DESIGN UNITS METRIC	THIRD ANGLE PROJECTION		
		4 PLACES ± --- ± ---	3 PLACES ± --- ± ---	2 PLACES ± 0.15 ± ---	1 PLACE ± 0.25 ± ---	DRAWN BY GRATE MA DATE 2004/02/02	CHECKED BY YA JUN DATE 2004/02/02	TITLE 1.27MM HIGH SPEED PLUG VERTICAL TYPE	
		ANGULAR ± 3 °		DRAFT WHERE APPLICABLE MUST REMAIN WITHIN DIMENSIONS		APPROVED BY SAM DATE 2004/02/02	MOLEX INCORPORATED		
		MATERIAL NO. SEE SHEET 2		DOCUMENT NO. SD-67491-001		SHEET NO. 1 OF 2		THIS DRAWING CONTAINS INFORMATION THAT IS PROPRIETARY TO MOLEX INCORPORATED AND SHOULD NOT BE USED WITHOUT WRITTEN PERMISSION	

9 8 7 6 5 4 3 2 1

	10	9	8	7	6	5	4	3	2	1		
	P/N	PLATING TYPE	DIM 'A'	DIM 'B'	COLOR	SOLDE AREA PLATING						
F	67491-0020	SEE NOTE 2(a)	2.05	2.57	BLACK	PURE TIN MATTE FINISH	▽ <sub>G</sub>					
	67491-0021	SEE NOTE 2(b)										
	67491-0022	SEE NOTE 2(c)										
	67491-0025	SEE NOTE 2(a)										
	67491-0026	SEE NOTE 2(b)	2.35									
67491-0027	SEE NOTE 2(c)											
E	67491-2020	SEE NOTE 2(a)	2.05	3.20	BLUE PANTONE NO. 293C ΔE<3							
	67491-2021	SEE NOTE 2(b)										
	67491-2022	SEE NOTE 2(c)										
	67491-2025	SEE NOTE 2(a)										
	67491-2026	SEE NOTE 2(b)	2.35									
67491-2027	SEE NOTE 2(c)											
D	67491-3010	SEE NOTE 2(a)	3.00	3.20	BLACK							
	67491-3011	SEE NOTE 2(b)										
	67491-3012	SEE NOTE 2(c)										
	67491-3110	SEE NOTE 2(a)										
	67491-3111	SEE NOTE 2(b)	3.00									
67491-3112	SEE NOTE 2(c)											

ADD PART NUMBER EC NO. SH2007-0895 DRAWN BY: DRW:WARCHEN26 CHECKED BY: CHIKO:JITIAN APPR: JINCHEN DATE: 2007/06/15 DATE: 2007/06/18 DATE: 2007/06/22	QUALITY SYMBOLS	GENERAL TOLERANCES (UNLESS SPECIFIED)	DIMENSION STYLE	SCALE	DESIGN UNITS	THIRD ANGLE PROJECTION
	▽=0	mm INCH	MM ONLY	4:1	METRIC	
	▽=0	4 PLACES ± --- ± ---	DRAWN BY DATE	TITLE		
		3 PLACES ± --- ± ---	GRATE MA 2004/02/02	1.27MM HIGH SPEED PLUG VERTICAL TYPE		
	2 PLACES ± 0.15 ± ---	CHECKED BY DATE	MOLEX INCORPORATED			
	1 PLACE ± 0.25 ± ---	YA JUN 2004/02/02	MATERIAL NO. DOCUMENT NO. SHEET NO.			
	ANGULAR ± 3 °	APPROVED BY DATE	SD-67491-001 2 OF 2			
		SAM 2004/02/02	SEE TABLE THIS DRAWING CONTAINS INFORMATION THAT IS PROPRIETARY TO MOLEX INCORPORATED AND SHOULD NOT BE USED WITHOUT WRITTEN PERMISSION			
			SIZE A3			