

PLEASE CHECK WWW.MOLEX.COM FOR LATEST PART INFORMATION

Part Number: [0674910020](#)
Status: **Active**
Overview: [serial_ata_products](#)
Description: 1.27mm (.050") Pitch Serial ATA High Speed Header, Through Hole, Vertical, 7 Circuits, Gold (Au) Flash, with 2.05mm (.081") PC Tail Length, Lead-free

Documents:

[3D Model](#) [Product Specification PS-67491-001 \(PDF\)](#)
[Drawing \(PDF\)](#) [RoHS Certificate of Compliance \(PDF\)](#)

General

| | |
|----------------|-------------------------------------|
| Product Family | PCB Headers |
| Series | 67491 |
| Application | Board-to-Board, Wire-to-Board |
| MolexKits | Yes |
| Overview | serial_ata_products |
| Product Name | Serial ATA |

Physical

| | |
|--------------------------------|----------------|
| Breakaway | No |
| Circuits (Loaded) | 7 |
| Color - Resin | Black |
| Durability (mating cycles max) | 50 |
| First Mate / Last Break | Yes |
| Glow-Wire Compliant | No |
| Guide to Mating Part | No |
| Keying to Mating Part | Yes |
| Lock to Mating Part | Yes |
| Material - Plating Mating | Gold |
| Material - Plating Termination | Tin |
| Material - Resin | Polyester |
| Number of Rows | 1 |
| Orientation | Vertical |
| PC Tail Length (in) | 0.081 In |
| PC Tail Length (mm) | 2.05 mm |
| PCB Locator | Yes |
| PCB Retention | Yes |
| PCB Thickness Recommended (in) | 0.062 In |
| PCB Thickness Recommended (mm) | 1.60 mm |
| Packaging Type | Tray |
| Pitch - Mating Interface (in) | 0.050 In |
| Pitch - Mating Interface (mm) | 1.27 mm |
| Pitch - Term. Interface (in) | 0.050 In |
| Pitch - Term. Interface (mm) | 1.27 mm |
| Plating min: Mating (µin) | 2 |
| Plating min: Mating (µm) | 0.05 |
| Plating min: Termination (µin) | 50.8 |
| Plating min: Termination (µm) | 1.27 |
| Polarized to Mating Part | Yes |
| Polarized to PCB | Yes |
| Shrouded | No |
| Stackable | No |
| Surface Mount Compatible (SMC) | No |
| Temperature Range - Operating | -35°C to +85°C |
| Termination Interface: Style | Through Hole |

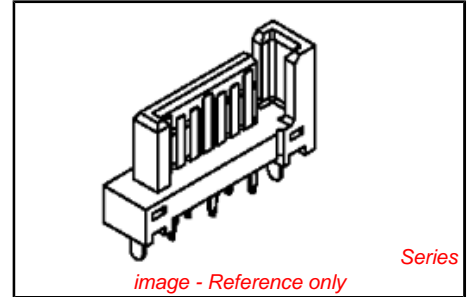


image - Reference only

EU RoHS

ELV and RoHS Compliant

REACH SVHC

Not Reviewed

Halogen-Free

Status

Not Halogen-Free

Need more information on product environmental compliance?

Email productcompliance@molex.com
 For a multiple part number RoHS Certificate of Compliance, [click here](#)

Please visit the [Contact Us](#) section for any non-product compliance questions.

China RoHS



Search Parts in this Series
[67491Series](#)

Mates With
 Serial ATA Signal Connector [67489](#) , [88755](#)

Electrical

Current - Maximum per Contact 1.5A
Voltage - Maximum 15V DC

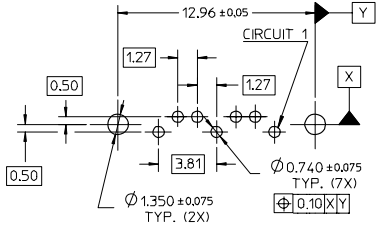
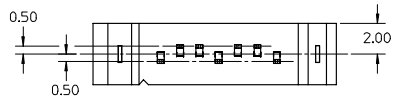
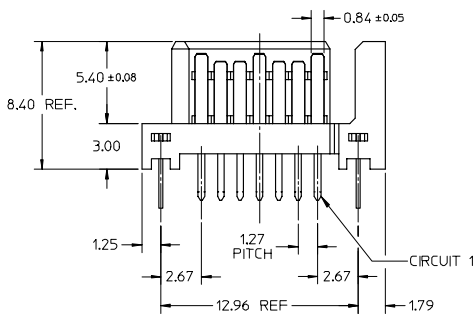
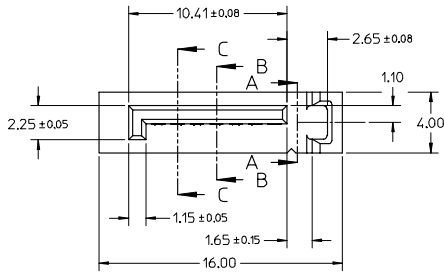
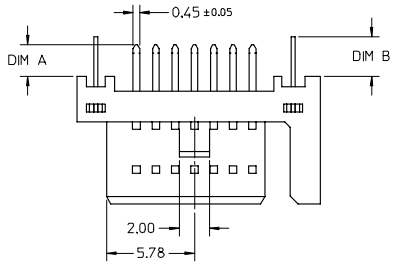
Material Info**Reference - Drawing Numbers**

Product Specification PS-67491-001
Sales Drawing SD-67491-001

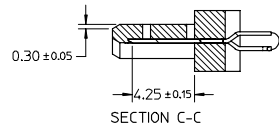
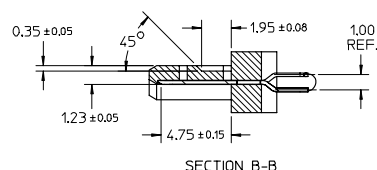
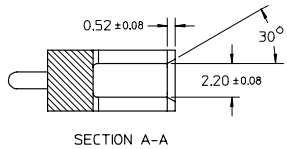
This document was generated on 06/07/2010

PLEASE CHECK WWW.MOLEX.COM FOR LATEST PART INFORMATION

10 9 8 7 6 5 4 3 2 1

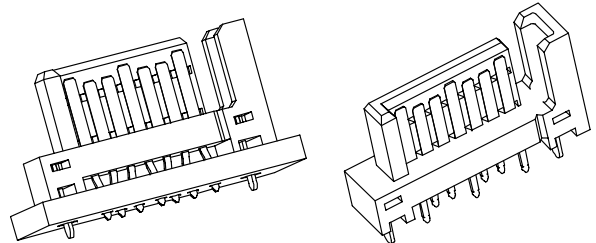


RECOMMENDED P.C.B. LAYOUT (T=1.6mm/2.0mm/2.4mm)



NOTES:

- MATERIAL:
HOUSING: THERMAL PLASTIC, UL94V-0, COLOR: SEE SHEET2
TERMINAL/PEG: COPPER ALLOY, THICKNESS=0.25MM
- TERMINAL PLATING:
CONTACT AREA: (a) GOLD FLASH
(b) 0.76 MICRON GOLD PLATED
(c) 0.38 MICRON GOLD PLATED
SOLDER TAIL:
1.27 MICRON MIN. MATTE TIN PLATED
UNDER PLATE:
1.27 MICRON MIN. NICKEL PLATED
- PEG PLATING:
1.27 MICRON MIN. MATTE TIN PLATED OVERALL
1.27 MICRON MIN. NICKEL UNDER PLATED
- PACKAGING SPECIFICATION REFER TO PK-67491-001
- PRODUCT SPECIFICATION REFER TO PS-67491-001
- MATING PART: 67489
- RECOMMENDED PROCESS: WAVE SOLDERING



| | | | | | | | | | |
|--|-------------------------------|---------------------------------------|-------|--|--------------------|--|------------------------|---------------------------|--|
| ADD PART NUMBER EC NO. SH2007-0895 DRAWN: CHEN26 CHECKED: JIAN APPR: JINCHEN DATE: 2007/06/15 DATE: 2007/06/18 DATE: 2007/06/22 | QUALITY SYMBOLS ▽=0 ▽=0 | GENERAL TOLERANCES (UNLESS SPECIFIED) | | DIMENSION STYLE MM ONLY | | SCALE 4:1 | DESIGN UNITS METRIC | THIRD ANGLE PROJECTION | |
| | | mm | INCH | DRAWN BY GRATE MA | DATE 2004/02/02 | TITLE 1.27MM HIGH SPEED PLUG VERTICAL TYPE | | | |
| | | 4 PLACES ± --- | ± --- | CHECKED BY YA JUN | DATE 2004/02/02 | MOLEX INCORPORATED MATERIAL NO. SD-67491-001 DOCUMENT NO. SD-67491-001 SHEET NO. 1 OF 2 | | | |
| | | 3 PLACES ± --- | ± --- | APPROVED BY SAM | DATE 2004/02/02 | | | | |
| DRAFT WHERE APPLICABLE MUST REMAIN WITHIN DIMENSIONS | | SEE SHEET 2 | | THIS DRAWING CONTAINS INFORMATION THAT IS PROPRIETARY TO MOLEX INCORPORATED AND SHOULD NOT BE USED WITHOUT WRITTEN PERMISSION | | | | | |

9 8 7 6 5 4 3 2 1

| | 10 | 9 | 8 | 7 | 6 | 5 | 4 | 3 | 2 | 1 | | |
|------------|---------------|---------------|---------|---------|-------------------------------------|--------------------------|----------------|---|---|---|--|--|
| | P/N | PLATING TYPE | DIM 'A' | DIM 'B' | COLOR | SOLDE AREA PLATING | | | | | | |
| F | 67491-0020 | SEE NOTE 2(a) | 2.05 | 2.57 | BLACK | PURE TIN MATTE FINISH | ▽ _G | | | | | |
| | 67491-0021 | SEE NOTE 2(b) | | | | | | | | | | |
| | 67491-0022 | SEE NOTE 2(c) | | | | | | | | | | |
| | 67491-0025 | SEE NOTE 2(a) | | | | | | | | | | |
| | 67491-0026 | SEE NOTE 2(b) | 2.35 | | | | | | | | | |
| 67491-0027 | SEE NOTE 2(c) | | | | | | | | | | | |
| E | 67491-2020 | SEE NOTE 2(a) | 2.05 | 3.20 | BLUE PANTONE NO. 293C ΔE<3 | | | | | | | |
| | 67491-2021 | SEE NOTE 2(b) | | | | | | | | | | |
| | 67491-2022 | SEE NOTE 2(c) | | | | | | | | | | |
| | 67491-2025 | SEE NOTE 2(a) | | | | | | | | | | |
| | 67491-2026 | SEE NOTE 2(b) | 2.35 | | | | | | | | | |
| 67491-2027 | SEE NOTE 2(c) | | | | | | | | | | | |
| D | 67491-3010 | SEE NOTE 2(a) | 3.00 | 3.20 | BLACK | | | | | | | |
| | 67491-3011 | SEE NOTE 2(b) | | | | | | | | | | |
| | 67491-3012 | SEE NOTE 2(c) | | | | | | | | | | |
| | 67491-3110 | SEE NOTE 2(a) | | | | | | | | | | |
| | 67491-3111 | SEE NOTE 2(b) | 3.00 | | | | | | | | | |
| 67491-3112 | SEE NOTE 2(c) | | | | | | | | | | | |

| | | | | | | |
|--|-----------------------|---------------------------------------|--|--------------------------------------|--------------|------------------------|
| ADD PART NUMBER EC NO: SH2007-0895 DRW: WARCHEN26 - 2007/06/15 CHK: CHIKO-JIAN 2007/06/18 APPR: JINCHEN 2007/06/22 G REV | QUALITY SYMBOLS | GENERAL TOLERANCES (UNLESS SPECIFIED) | DIMENSION STYLE | SCALE | DESIGN UNITS | THIRD ANGLE PROJECTION |
| | ▽=0 | mm INCH | MM ONLY | 4:1 | METRIC | |
| | ▽=0 | 4 PLACES ± --- ± --- | DRAWN BY DATE | TITLE | | |
| | | 3 PLACES ± --- ± --- | GRATE MA 2004/02/02 | 1.27MM HIGH SPEED PLUG VERTICAL TYPE | | |
| | 2 PLACES ± 0.15 ± --- | CHECKED BY DATE | MOLEX INCORPORATED | | | |
| | 1 PLACE ± 0.25 ± --- | YA JUN 2004/02/02 | SD-67491-001 | | | |
| | ANGULAR ± 3 ° | APPROVED BY DATE | SHEET NO. 2 OF 2 | | | |
| | | SAM 2004/02/02 | INCORPORATED AND SHOULD NOT BE USED WITHOUT WRITTEN PERMISSION | | | |
| | | MATERIAL NO. | | | | |
| | | DOCUMENT NO. | | | | |
| | | SEE TABLE | | | | |

fb_frame_A3_P_AM.T
Rev. D 2004/06/28