

PLEASE CHECK WWW.MOLEX.COM FOR LATEST PART INFORMATION

Part Number: [0643251023](#)
Status: **Active**
Overview: [cmc_connectors](#)
Description: CMC Blind Plug for CP terminal cavity 1.5mm (.059")

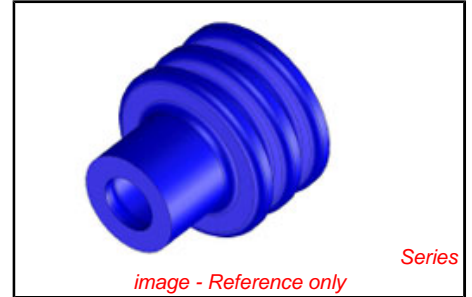
Documents:
[Drawing \(PDF\)](#) [RoHS Certificate of Compliance \(PDF\)](#)

General	
Product Family	Crimp Housings
Series	64325
Comments	For additional details please refer to Application Tooling Spec of Relevant CMC Connector.
More Detailed Tech Information	Secures sealing system when flexibility is required for unused cavities with standard backplate
Overview	cmc_connectors
Product Name	CMC
Physical	
Circuits (maximum)	0
Circuits Detail	N/A
Color - Resin	Orange
Gender	Plug
Glow-Wire Compliant	No
Keying to Mating Part	N/A
Lock to Mating Part	No
Material - Resin	Nylon
Number of Rows	0
Packaging Type	Carton
Panel Mount	No
Pitch - Mating Interface (in)	0.000 In
Pitch - Mating Interface (mm)	0.00 mm
Polarized to Mating Part	N/A
Stackable	No
Temperature Range - Operating	-40°C to +125°C

Material Info

Reference - Drawing Numbers

Application Specification	AS-500993-002, AS-64321-001, AS-98993-011
Packaging Specification	PK-64325-002
Product Specification	RPS-500993-001
Sales Drawing	SD-64325-002



<p>EU RoHS ELV and RoHS Compliant REACH SVHC Not Reviewed Halogen-Free Status Not Reviewed</p>	<p>China RoHS</p>
--	--------------------------

Need more information on product environmental compliance?

Email productcompliance@molex.com
 For a multiple part number RoHS Certificate of Compliance, [click here](#)

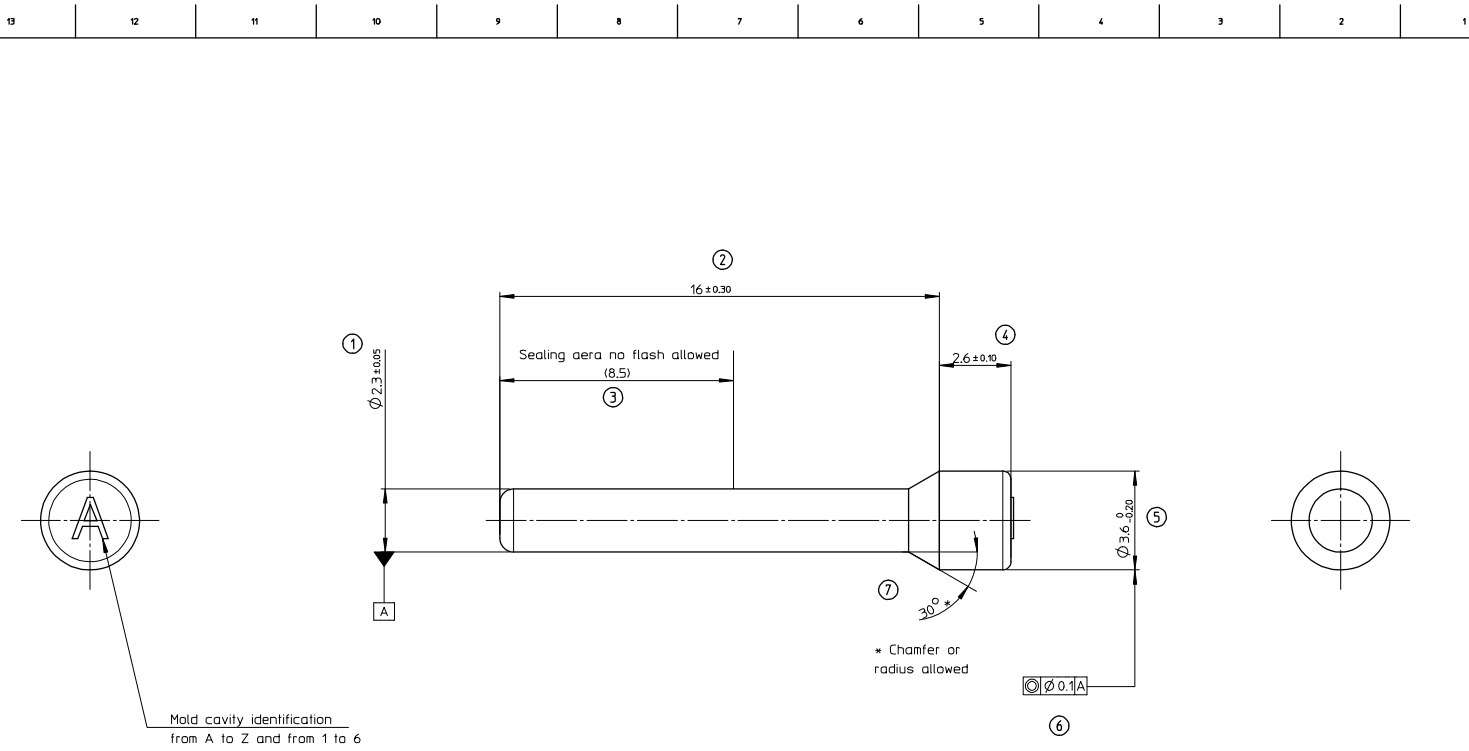
Please visit the [Contact Us](#) section for any non-product compliance questions.

Search Parts in this Series
[64325Series](#)

Mates With
 CMC Connector [64318](#) , [64319](#) , [64320](#) , [64321](#)

Use With
 CMC Receptacle Series [64318](#) , [64319](#) , [64320](#) , [64321](#)

PLEASE CHECK WWW.MOLEX.COM FOR LATEST PART INFORMATION



Mold cavity identification
from A to Z and from 1 to 6

NOTES :
-WEIGHT : 0.098g
-MATERIAL : PA 6.6, COLOUR : ORANGE

FIRST RELEASE EC NO: G2008-0463 DRAWN: JULOU 2008/05/16 CHKD: CBOUCHAN 2008/05/16 APPR: LSTICKEIR 2008/05/16	QUALITY SYSTEM 100% 100%	GENERAL TOLERANCES (UNLESS SPECIFIED)		DIMENSION STYLE MM ONLY	SCALE 10:1	DESIGN UNITS METRIC	THIRD ANGLE PROJECTION
		4 PLACES ± --- ± --- 3 PLACES ± --- ± --- 2 PLACES ± 0.2 ± --- 1 PLACE ± 0.2 ± --- ANGULAR ± 2 °	DRAWN BY J JULOU	DATE 2007/07/26	TITLE CMC PLUG WAY CP 1.5 SALES DRAWING		
		DRAFT WHERE APPLICABLE MUST REMAIN WITHIN DIMENSIONS	CHECKED BY P GRANDCL	DATE 2007/07/26	APPROVED BY CBOUCHAN	DATE 2007/07/27	
		MATERIAL NO. 0643251023	DOCUMENT NO. SD-64325-002	MOLEX INCORPORATED	SHEET NO. 1 OF 1		