

PLEASE CHECK WWW.MOLEX.COM FOR LATEST PART INFORMATION

Part Number: [0511151601](#)
Status: **Active**
Description: 4.00mm (.157") Pitch OBD-II Wire-to-Wire Receptacle Housing Panel Mount

Documents:

3D Model	Product Specification PS-51115-001 (PDF)
Drawing (PDF)	RoHS Certificate of Compliance (PDF)

General

Product Family	Crimp Housings
Series	51115
Product Name	OBD-II

Physical

Circuits (maximum)	16
Color - Resin	Black
Gender	Receptacle
Glow-Wire Compliant	No
Material - Resin	Polyester
Number of Rows	2
Packaging Type	Tray
Panel Mount	Yes
Pitch - Mating Interface (in)	0.157 In
Pitch - Mating Interface (mm)	4.00 mm
Stackable	No
Temperature Range - Operating	-40°C to +85°C

Material Info

Reference - Drawing Numbers

Product Specification	PS-51115-001
Sales Drawing	SD-51115-**0*

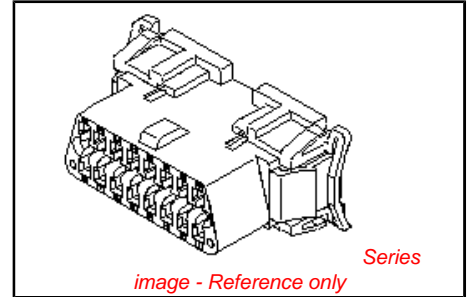


image - Reference only

EU RoHS

**ELV and RoHS
Compliant**
**REACH SVHC
Contains SVHC: No**
**Halogen-Free
Status**

China RoHS



Not Halogen-Free

Need more information on product environmental compliance?

Email productcompliance@molex.com
 For a multiple part number RoHS Certificate of Compliance, [click here](#)

Please visit the [Contact Us](#) section for any non-product compliance questions.

Search Parts in this Series
51115Series

Use With
50420 Terminal . Li...

PLEASE CHECK WWW.MOLEX.COM FOR LATEST PART INFORMATION

DWG. NO. SD-51115-***0*

E

D

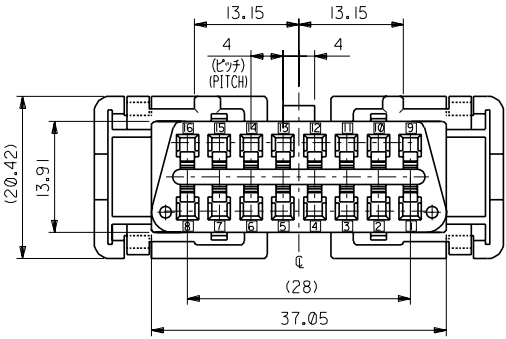
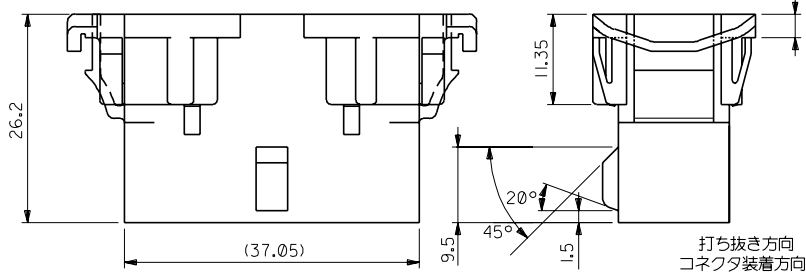
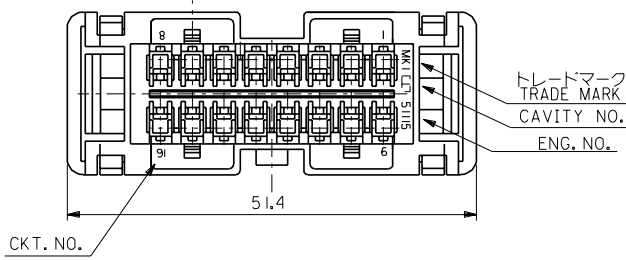
C

B

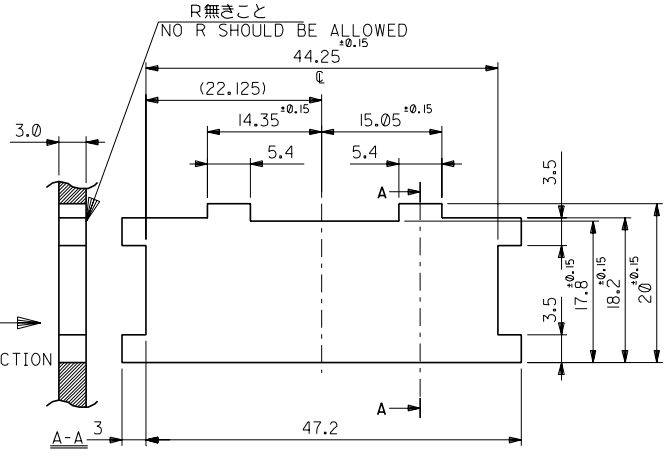
A

1MM DIMENSIONS IN METRIC DO NOT SCALE DRAWING

8 7 6 5 4 3 2 1



- 注記
NOTES
- 適合ターミナル: 50420-8*00
APPLICABLE TERMINAL: 50420-8*00
 - 適合リテーナ: 51117-1605
APPLICABLE RETAINER: 51117-1605



参考パネルスロット寸法
PANEL SLOT DIM.(REF.)
(パネル厚: 3.0)
(THICKNESS: 3.0)

51115-1601	16
ENG. NO.	NO. OF CKT.

材料 MATERIAL PBTP,UL94V-0 (黒色 BLACK)		モレックス MOLEX-JAPAN CO.,LTD. 日本モレックス株式会社	
仕上げ FINISH —		REVISE ONLY ON CAD SYSTEM	
適用電線範囲 WIRE RANGE —		TITLE 名称 4.0 WIRE TO WIRE CONN.REC.HOUSING WITH MOUNTING EARS (SAE J1962 DIAGNOSTIC CONNECTOR)	
被覆外径 INS. RANGE —		DWG. NO. SD-51115-***0*	
DRAWN BY '94/3/3 K.F.FURUYAMA		CHK'D BY '94/3/4 M.SANO M.SAKANO	
APP'D BY '94/3/4 M.ENOMOTO		尺度 SCALE 2:1	
角度 ANGLE	+3°	記号 LTR	変更内容 REVISION RECORD
30°以上 OVER	+0.3	A	変更 REVISED (JA90087)
10°以上 未過 OVER 30 UNDER	+0.25		新規 NEW (M5066)
未過 UNDER	+0.2		リリース RELEASED
一般公差 GENERAL TOLERANCES			

THIS DRAWING CONTAINS INFORMATION THAT IS PROPRIETARY TO MOLEX/JAPAN AND SHOULD NOT BE USED WITHOUT WRITTEN PERMISSION
本図面は日本モレックス(株)の所有する情報を含むもので、当社の許可なく複製を禁止する。
EN-01C(032)MXJ-32

8 7 6 5 4 3 2 1