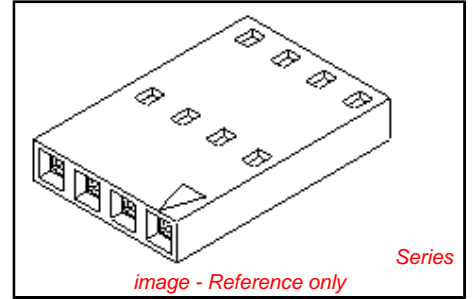


PLEASE CHECK WWW.MOLEX.COM FOR LATEST PART INFORMATION

Part Number: [0050579020](#)
Status: **Active**
Overview: [cgrid_sl_products](#)
Description: 2.54mm (.100") Pitch SL™ Crimp Housing, Single Row, Version A, Nonpolarized, 20 Circuits

Documents:

| | |
|---|--|
| 3D Model | Product Specification PS-70058 (PDF) |
| Packaging Specification (PDF) | Product Specification PS-70400 (PDF) |
| Drawing (PDF) | RoHS Certificate of Compliance (PDF) |



Agency Certification

| | |
|-----|-----------|
| CSA | LR19980 |
| TUV | R72081037 |
| UL | E29179 |

General

| | |
|----------------|-----------------------------------|
| Product Family | Crimp Housings |
| Series | 70066 |
| Comments | Version A |
| Overview | cgrid_sl_products |
| Product Name | SL™ |

Physical

| | |
|-------------------------------|-----------------|
| Circuits (maximum) | 20 |
| Color - Resin | Black |
| Flammability | 94V-0 |
| Gender | Female |
| Glow-Wire Compliant | No |
| Material - Resin | Polyester Alloy |
| Number of Rows | 1 |
| Packaging Type | Bag |
| Panel Mount | No |
| Pitch - Mating Interface (in) | 0.100 In |
| Pitch - Mating Interface (mm) | 2.54 mm |
| Stackable | Yes |
| Temperature Range - Operating | -40°C to +105°C |

Material Info

| | |
|-----------------|------------|
| Old Part Number | 70066-0019 |
|-----------------|------------|

Reference - Drawing Numbers

| | |
|-------------------------|--------------------|
| Packaging Specification | PK-70066-100 |
| Product Specification | PS-70058, PS-70400 |
| Sales Drawing | SD-70066-0001-0024 |
| Test Summary | TS-70058-001 |

| | |
|--|--------------------------|
| <p>EU RoHS ELV and RoHS Compliant REACH SVHC Contains SVHC: No Halogen-Free Status Not Halogen-Free</p> | <p>China RoHS</p> |
|--|--------------------------|

Need more information on product environmental compliance?

Email productcompliance@molex.com
 For a multiple part number RoHS Certificate of Compliance, [click here](#)

Please visit the [Contact Us](#) section for any non-product compliance questions.

Search Parts in this Series
[70066Series](#)

Mates With
[8624](#) , [70203](#) , [70206](#) , [42375](#) , [42377](#)

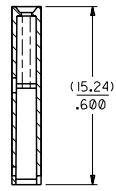
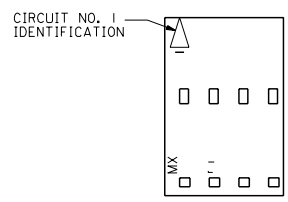
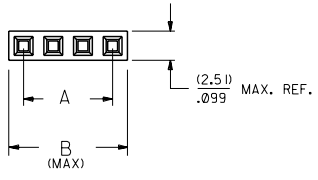
Use With
[70058](#) , [71851](#)

PLEASE CHECK WWW.MOLEX.COM FOR LATEST PART INFORMATION

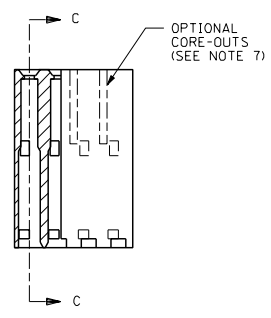
13 12 11 10 9 8 7 6 70066 4 3 2 1

- NOTES:**
- 1) MATERIAL: G.F. POLYESTER
 - 2) HOUSING TO BE USED WITH TERMINAL PT. NO. 70058-*****
 - 3) SEE CHART FOR CIRCUIT SIZES.
 - 4) TO BE USED WITH $(0.64) \times (0.25)$ SQ. OR RD. PINS.
 - 5) PARTS STACKABLE END TO END AND SIDE BY SIDE ON $(2.54) \times (100)$ CENTERS.
 - 6) REFER TO PRODUCT SPECIFICATION NO. : P.S.-70058
 - 7) PARTS MAY OR MAY NOT BE SUPPLIED WITH EXTERIOR CORE-OUT CONFIGURATION, SEE DWG. SD-70066-***** FOR OPTIONAL HOUSING DETAILS.
 - 8) PACKAGE PER PK-70066-100.

OPTION "A"



SECTION C-C



| CKT. SIZE | EDP. NO. | ENG. NO. | A | B |
|-----------|------------|------------|------------------|------------------|
| 2 | 50-57-9002 | 70066-0001 | (2.54) .100 | (5.05) .199 |
| 3 | 50-57-9003 | 70066-0002 | (5.08) .200 | (7.59) .299 |
| 4 | 50-57-9004 | 70066-0003 | (7.62) .300 | (10.13) .399 |
| 5 | 50-57-9005 | 70066-0004 | (10.16) .400 | (12.67) .499 |
| 6 | 50-57-9006 | 70066-0005 | (12.70) .500 | (15.21) .599 |
| 7 | 50-57-9007 | 70066-0006 | (15.24) .600 | (17.75) .699 |
| 8 | 50-57-9008 | 70066-0007 | (17.78) .700 | (20.29) .799 |
| 9 | 50-57-9009 | 70066-0008 | (20.32) .800 | (22.83) .899 |
| 10 | 50-57-9010 | 70066-0009 | (22.86) .900 | (25.37) .999 |
| 11 | 50-57-9011 | 70066-0010 | (25.40) 1.000 | (27.91) 1.099 |
| 12 | 50-57-9012 | 70066-0011 | (27.94) 1.100 | (30.45) 1.199 |
| 13 | 50-57-9013 | 70066-0012 | (30.48) 1.200 | (32.99) 1.299 |
| 14 | 50-57-9014 | 70066-0013 | (33.02) 1.300 | (35.53) 1.399 |
| 15 | 50-57-9015 | 70066-0014 | (35.56) 1.400 | (38.07) 1.499 |
| 16 | 50-57-9016 | 70066-0015 | (38.10) 1.500 | (40.61) 1.599 |
| 17 | 50-57-9017 | 70066-0016 | (40.64) 1.600 | (43.15) 1.699 |
| 18 | 50-57-9018 | 70066-0017 | (43.18) 1.700 | (45.69) 1.799 |
| 19 | 50-57-9019 | 70066-0018 | (45.72) 1.800 | (48.23) 1.899 |
| 20 | 50-57-9020 | 70066-0019 | (48.26) 1.900 | (50.77) 1.999 |
| 21 | 50-57-9021 | 70066-0020 | (50.80) 2.000 | (53.31) 2.099 |
| 22 | 50-57-9022 | 70066-0021 | (53.34) 2.100 | (55.85) 2.199 |
| 23 | 50-57-9023 | 70066-0022 | (55.88) 2.200 | (58.39) 2.299 |
| 24 | 50-57-9024 | 70066-0023 | (58.42) 2.300 | (60.93) 2.399 |
| 25 | 50-57-9025 | 70066-0024 | (60.96) 2.400 | (63.47) 2.499 |

| | | | | | | | | |
|--|--|---|---------------------------------------|--|--|--|--|---------------|
| REVISIONS LTR. REVISIONS LTR. REVISIONS | | E REVISOR PER ECR* U10967 UC-MS*SUPLM@LUC | D REVISOR PER ECR* U80051 3-27-89 MGB | C REDRAWN ON CAD ECR * 9120 5/5/86 WZ | ADD PKG NOTE ECN LDT2000-0468 SCHAFFER 99/12/1 | DIMENSIONS SHOWN IN METRIC INCH UNLESS OTHERWISE SPECIFIED TOLERANCES ANGULAR 1/2° | TITLE HOUSING CONNECTOR (2.54) X .100 GRID STACKABLE SINGLE ROW | MFG. SH. REV. |
| REVISIONS LTR. REVISIONS | | UNLESS OTHERWISE SPECIFIED TOLERANCES ANGULAR 1/2° | | DRAFT WHERE APPLICABLE MUST REMAIN WITHIN DIMENSIONS | | INCH METRIC ±.010 --- ±.014 ±0.25 --- ±0.35 | REVISIONS ONLY ON CAD SYSTEM | DATE 03/27/86 |
| LTR. REVISIONS LTR. REVISIONS | | APP'D. RS BY WZ R.L. SCALE 4:1 | | FILE NAME 700660001 | | PART NO. 70066-0001 | SHEET NO. I | DATE 03/27/86 |
| LTR. REVISIONS LTR. REVISIONS | | APP'D. R.L. SCALE 4:1 | | FILE NAME 700660001 | | PART NO. 70066-0001 | SHEET NO. I | DATE 03/27/86 |
| LTR. REVISIONS LTR. REVISIONS | | APP'D. R.L. SCALE 4:1 | | FILE NAME 700660001 | | PART NO. 70066-0001 | SHEET NO. I | DATE 03/27/86 |

13 12 11 10 9 8 7 6 5 4 3 2 1