

**PLEASE CHECK WWW.MOLEX.COM FOR LATEST PART INFORMATION**

**Part Number:** [0050361667](#)  
**Status:** **Active**  
**Overview:** [minifit\\_jr](#)  
**Description:** 4.20mm (.165") Pitch Mini-Fit Jr.™ Receptacle Housing, Dual Row, PA Polyamide Nylon 6/6, UL 94V-0, 24 Circuits, Glow Wire Compatible

**Documents:**

[3D Model](#) [Product Specification PS-5556-001 \(PDF\)](#)  
[Drawing \(PDF\)](#) [RoHS Certificate of Compliance \(PDF\)](#)

**Agency Certification**

CSA LR19980  
TUV R72081037  
UL E29179

**General**

Product Family Crimp Housings  
Series [5557](#)  
Comments Current = 13A max. per circuit when header is mated to a receptacle loaded with [45750](#) series terminals crimped to 16 AWG wire. . See Molex product specification PS-45750-001 for additional current de-rating information.. See Molex product specification PS-5556-001 for additional current de-rating information.  
Overview [minifit\\_jr](#)  
Product Name Mini-Fit Jr.™

**Physical**

Breakaway No  
Circuits (maximum) 24  
Color - Resin Black  
Flammability 94V-0  
Gender Receptacle  
Glow-Wire Compliant Yes  
Keying to Mating Part None  
Lock to Mating Part Yes  
Material - Resin Nylon  
Number of Rows 2  
Packaging Type Bag  
Panel Mount No  
Pitch - Mating Interface (in) 0.165 In  
Pitch - Mating Interface (mm) 4.20 mm  
Pitch - Term. Interface (in) 0.165 In  
Pitch - Term. Interface (mm) 4.20 mm  
Polarized to Mating Part Yes  
Ports 1  
Stackable No  
Temperature Range - Operating -40°C to +105°C

**Electrical**

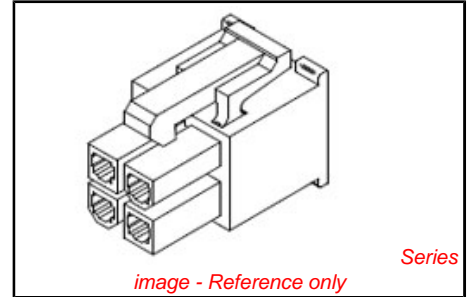
Current - Maximum per Contact 13A

**Material Info**

Old Part Number 5557-24R-225

**Reference - Drawing Numbers**

Packaging Specification PK-5557-003



<p><b>EU RoHS</b>  <b>ELV and RoHS</b>  <b>Compliant</b>  <b>REACH SVHC</b>  <b>Contains SVHC: No</b>  <b>Halogen-Free</b>  <b>Status</b>  <b>Halogen-Free</b></p>	<p><b>China RoHS</b></p>
--	--------------------------

**Need more information on product environmental compliance?**  
Email [productcompliance@molex.com](mailto:productcompliance@molex.com)  
For a multiple part number RoHS Certificate of Compliance, [click here](#)  
Please visit the [Contact Us](#) section for any non-product compliance questions.

**Search Parts in this Series**  
[5557Series](#)

**Mates With**  
[5559 Crimp Housings Plug,](#)

**Use With**  
[5556 Female Terminal](#)

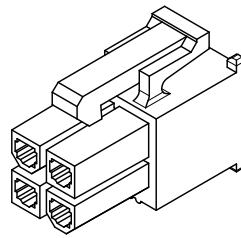
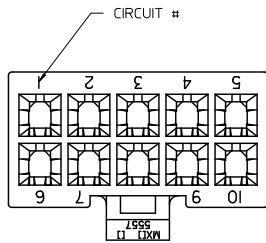
Product Specification  
Sales Drawing  
Test Summary

PS-5556-001  
SD-5557-003  
TS-5556-002

This document was generated on 05/19/2010

**PLEASE CHECK WWW.MOLEX.COM FOR LATEST PART INFORMATION**

13 12 11 10 9 8 7 6 5 4 3 2 1

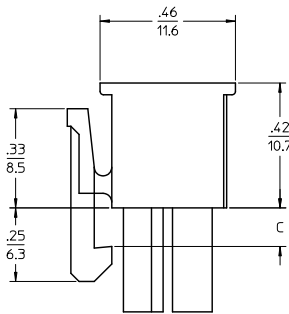
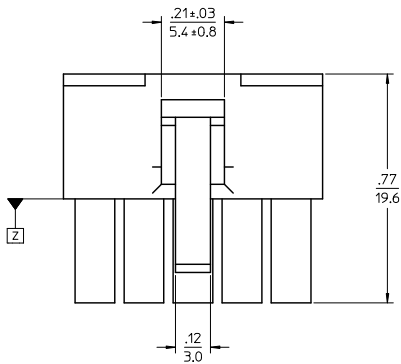


4 CKT SHOWN

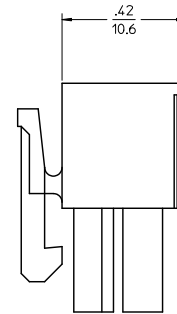
NOTES:

- 1) MATERIAL:
  - \*BLANK\* = NYLON 6/6, 94V-2, COLOR: NATURAL.
  - \*BL\* = NYLON 6/6, 94V-2, COLOR: BLACK.
  - \*RE\* = NYLON 6/6, 94V-2, COLOR: RED.
  - \*YE\* = NYLON 6/6, 94V-2, COLOR: YELLOW.
  - \*210\* = NYLON 6/6, 94V-0, COLOR: NATURAL.
  - \*225\* = NYLON (PA6), UL94V-0, COLOR: BLACK, IEC 60335-1, 4th EDITION GLOW WIRE CAPABLE.
  - \*225N\* = NYLON (PA6), UL94V-0, COLOR: WHITE, IEC 60335-1, 4th EDITION GLOW WIRE CAPABLE.
  - \*400\* = NYLON 6/6, 94V-0, COLOR: BLACK.
- 2) FINISH: NOT APPLICABLE
- 3) PRODUCT SPECIFICATION: PS-5556-001
- 4) PACKAGING: BULK
- 5) PART MATES WITH MOLEX PLUG #5559 AND HEADERS #5566, #5569.
- 6) PART TO BE USED WITH MOLEX FEMALE TERMINAL #5556.
- 7) PART IS NOT DESIGNED FOR CURRENT SHARING.
- 8) CONNECTORS ARE NOT TO BE MATED OR UNMATED WHILE CIRCUITS ARE LIVE.
- 9) WIRES ARE TO BE DRESSED IN SUCH A MANNER TO ALLOW THE TERMINALS TO FLOAT FREELY IN THE POCKET.
- 10) PART CONFORMS TO CLASS 'B' REQUIREMENTS OF COSMETIC SPECIFICATION PS-45499-002 WITH THE EXCEPTION OF DISCOLORATION, FLASH AND SINK MEET CLASS 'C' REQUIREMENTS.

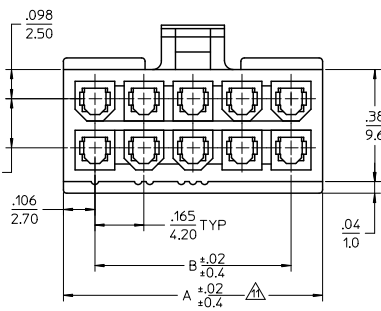
▲ TO BE MEASURED AT SURFACE [Z]



4-24 CKT



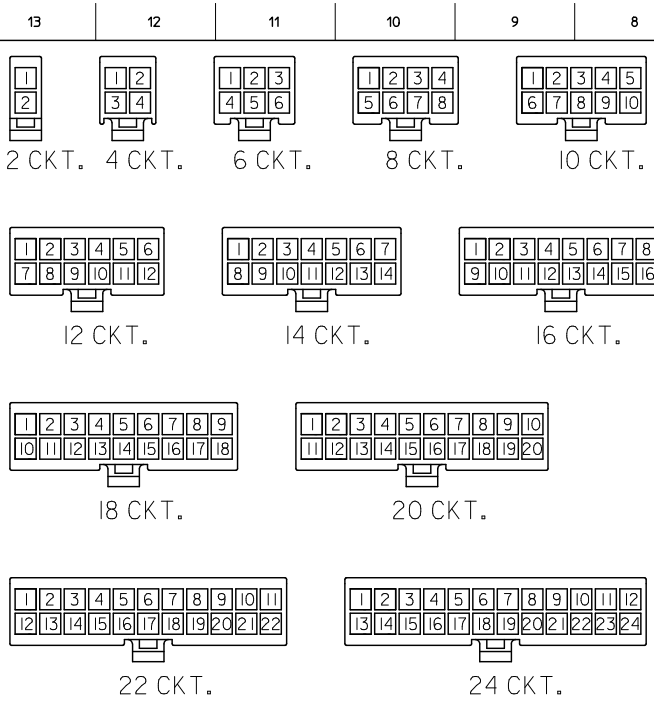
2 CKT ONLY



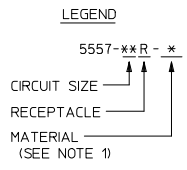
2.031/(51.6)	1.819/(46.2)	24
1.866/(47.4)	1.654/(42.0)	22
1.701/(43.2)	1.488/(37.8)	20
1.535/(39.0)	1.323/(33.6)	18
1.370/(34.8)	1.157/(29.4)	16
1.205/(30.6)	0.992/(25.2)	14
1.039/(26.4)	0.827/(21.0)	12
0.874/(22.2)	0.661/(16.8)	10
0.709/(18.0)	0.496/(12.6)	8
0.543/(13.8)	0.331/(8.4)	6
0.378/(9.6)	0.165/(4.2)	4
0.213/(5.4)		2
A	B	C

MODIFIED ISO VIEW EC NO. UEP2010-2566 DRWN: JAGUILAR 2010/04/05 CHKD: BELL 97/01/08 APPR: SMITH 2010/04/14	QUALITY SYMBOLS ▽=0 ▽=0	GENERAL TOLERANCES (UNLESS SPECIFIED) 4 PLACES ± .01 ± .01 3 PLACES ± .02 ± .015 2 PLACES ± .025 ± .015 1 PLACE ± 0.38 ± .015 ANGULAR ± 3°	DIMENSION STYLE IN/MM DRAWN BY: S. MOCHIZUKI DATE: '90/02/22 CHECKED BY: M. FUKUSHIMA DATE: '97/01/08 APPROVED BY: M. FUKUSHIMA DATE: '97/01/08	SCALE: 4:1 DESIGN UNITS: METRIC THIRD ANGLE PROJECTION	TITLE: NEW MINI FIT CONN REC. HOUSING
	DRAFT WHERE APPLICABLE MUST REMAIN WITHIN DIMENSIONS		MATERIAL NO. SEE SHEET 2	MOLEX INCORPORATED DOCUMENT NO. SD-5557-003	SHEET NO. 1 OF 2
	THIS DRAWING CONTAINS INFORMATION THAT IS PROPRIETARY TO MOLEX INCORPORATED AND SHOULD NOT BE USED WITHOUT WRITTEN PERMISSION				
	J4				

tb\_frame\_C\_P\_ME\_T Rev. E 2006/04/15 12 11 10 9 8 7 6 5 4 3 2 1



CIRCUIT SIZE LAYOUT  
(NOT TO SCALE)



V-0 GLOW WIRE (BLACK)			V-0 GLOW WIRE (WHITE)		
EDP. NO.	ENG. NO.	NO. OF CKTS.	EDP. NO.	ENG. NO.	NO. OF CKTS.
50-36-1667	5557-24R-225	24	-	-	24
26-01-3167	5557-22R-225	22	-	-	22
* 26-01-3166	5557-20R-225	20	-	-	20
50-36-1668	5557-18R-225	18	-	-	18
50-36-1669	5557-16R-225	16	-	-	16
50-36-2293	5557-14R-225	14	-	-	14
50-36-1674	5557-12R-225	12	-	-	12
50-36-1671	5557-10R-225	10	-	-	10
50-36-1713	5557-08R-225	8	-	-	8
50-36-1672	5557-06R-225	6	-	-	6
50-30-4461	5557-04R-225	4	50-36-2301	5557-04R-225N	4
50-36-1673	5557-02R-225	2	-	-	2

V-0 (BLACK)			V-0 (NATURAL)		
EDP. NO.	ENG. NO.	NO. OF CKTS.	EDP. NO.	ENG. NO.	NO. OF CKTS.
* 39-03-9242	5557-24R-400	24	39-01-2245	5557-24R-210	24
* 39-03-9222	5557-22R-400	22	39-01-2225	5557-22R-210	22
* 39-03-9202	5557-20R-400	20	39-01-2205	5557-20R-210	20
* 39-03-9182	5557-18R-400	18	39-01-2185	5557-18R-210	18
* 39-03-9162	5557-16R-400	16	39-01-2165	5557-16R-210	16
* 39-03-9142	5557-14R-400	14	39-01-2145	5557-14R-210	14
* 39-03-9122	5557-12R-400	12	39-01-2125	5557-12R-210	12
* 39-03-9102	5557-10R-400	10	39-01-2105	5557-10R-210	10
* 39-03-9082	5557-08R-400	8	39-01-2085	5557-08R-210	8
* 39-03-9062	5557-06R-400	6	39-01-2065	5557-06R-210	6
39-03-9042	5557-04R-400	4	39-01-2045	5557-04R-210	4
39-03-9022	5557-02R-400	2	39-01-2025	5557-02R-210	2

\* = CONSULT FACTORY FOR AVAILABILITY.

V-2 (YELLOW)			V-2 (RED)			V-2 (BLACK)			V-2 (NATURAL)		
EDP. NO.	ENG. NO.	NO. OF CKTS.	EDP. NO.	ENG. NO.	NO. OF CKTS.	EDP. NO.	ENG. NO.	NO. OF CKTS.	EDP. NO.	ENG. NO.	NO. OF CKTS.
		24			24	* 39-01-3245	5557-24R-BL	24	39-01-2240	5557-24R	24
		22			22	39-01-3225	5557-22R-BL	22	39-01-2220	5557-22R	22
		20			20	* 39-01-3205	5557-20R-BL	20	39-01-2200	5557-20R	20
		18			18	* 39-01-3185	5557-18R-BL	18	39-01-2180	5557-18R	18
		16			16	* 39-01-3165	5557-16R-BL	16	39-01-2160	5557-16R	16
		14			14	39-01-3145	5557-14R-BL	14	39-01-2140	5557-14R	14
		12			12	39-01-3125	5557-12R-BL	12	39-01-2120	5557-12R	12
		10			10	39-01-3105	5557-10R-BL	10	39-01-2100	5557-10R	10
		8			8	39-01-3085	5557-08R-BL	8	39-01-2080	5557-08R	8
* 39-02-8061	5557-06R-YE	6			6	39-01-3065	5557-06R-BL	6	39-01-2060	5557-06R	6
* 39-02-8041	5557-04R-YE	4	* 39-02-8040	5557-04R-RE	4	39-01-3045	5557-04R-BL	4	39-01-2040	5557-04R	4
* 39-02-8021	5557-02R-YE	2			2	39-01-3025	5557-02R-BL	2	39-01-2020	5557-02R	2

MODIFIED CHARTS  
EC NO. UCP2010-2566  
DRAWN: JAGUILAR 2010/04/05  
CHKD: J.BELL 9/7/01/08  
APPR: S.MITH 2010/04/14

QUALITY SYMBOLS  
▽=0  
▽=0

GENERAL TOLERANCES (UNLESS SPECIFIED):  
4 PLACES ±0.2 INCH  
3 PLACES ±0.3 INCH  
2 PLACES ±0.4 INCH  
1 PLACE ±--- INCH  
ANGULAR ±3°

DIMENSION STYLE: MM ONLY  
SCALE: 1:1  
DESIGN UNITS: METRIC  
THIRD ANGLE PROJECTION

DRAWN BY: S. MOCHIZUKI DATE: '90/02/22  
CHECKED BY: M. FUKUSHIMA DATE: '97/01/08  
APPROVED BY: M. FUKUSHIMA DATE: '97/01/08

MATERIAL NO.: M.FUKUSHIMA  
DOCUMENT NO.: SD-5557-003  
SHEET NO.: 2 OF 2

NEW MINI FIT CONN REC. HOUSING  
MOLEX INCORPORATED

DRAFT WHERE APPLICABLE MUST REMAIN WITHIN DIMENSIONS

SEE CHART

THIS DRAWING CONTAINS INFORMATION THAT IS PROPRIETARY TO MOLEX INCORPORATED AND SHOULD NOT BE USED WITHOUT WRITTEN PERMISSION