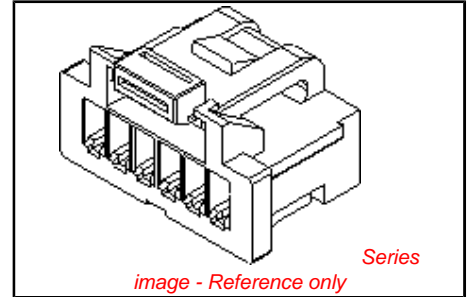


PLEASE CHECK WWW.MOLEX.COM FOR LATEST PART INFORMATION

Part Number: [5013300800](#)
Status: **Active**
Overview: [picoclasp](#)
Description: 1.00mm (.039") Pitch Pico-Clasp™ Wire-to-Board Female Housing, Single Row, with Positive Lock, 8 Circuits

Documents:

[3D Model](#) [Product Specification PS-501568-001 \(PDF\)](#)
[Drawing \(PDF\)](#) [RoHS Certificate of Compliance \(PDF\)](#)
[Product Specification PS-501331-001 \(PDF\)](#)



General

| | |
|----------------|---------------------------|
| Product Family | Crimp Housings |
| Series | 501330 |
| Overview | picoclasp |
| Product Name | Pico-Clasp™ |

Physical

| | |
|-------------------------------|----------------|
| Circuits (maximum) | 8 |
| Color - Resin | White |
| Gender | Female |
| Glow-Wire Compliant | No |
| Lock to Mating Part | Yes |
| Material - Resin | Nylon |
| Number of Rows | 1 |
| Packaging Type | Bag |
| Panel Mount | No |
| Pitch - Mating Interface (in) | 0.039 In |
| Pitch - Mating Interface (mm) | 1.00 mm |
| Polarized to Mating Part | Yes |
| Stackable | No |
| Temperature Range - Operating | -40°C to +85°C |

Electrical

| | |
|-------------------------------|----|
| Current - Maximum per Contact | 1A |
|-------------------------------|----|

Material Info

Reference - Drawing Numbers

| | |
|-------------------------|--|
| Packaging Specification | SPK-501330-001 |
| Product Specification | PS-501331-001 , PS-501568-001 , RPS-501331-001 , RPS-501331-002 , RPS-501331-003 , RPS-501331-005 , RPS-501331-006 , RPS-501331-007 , RPS-501568-002 , RPS-501568-003 , RPS-501568-004 , RPS-501568-005 , RPS-501940-001 |
| Sales Drawing | SD-501330-002 |

EU RoHS

ELV and RoHS Compliant
REACH SVHC
 Not Reviewed
Halogen-Free Status
 Not Reviewed

China RoHS



Need more information on product environmental compliance?

Email productcompliance@molex.com
 For a multiple part number RoHS Certificate of Compliance, [click here](#)

Please visit the [Contact Us](#) section for any non-product compliance questions.

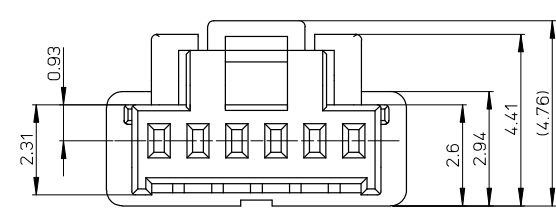
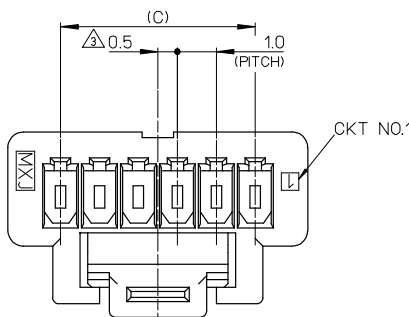
Search Parts in this Series
[501330Series](#)

Mates With
[501331 PCB Header](#) . [501568 PCB Header](#)

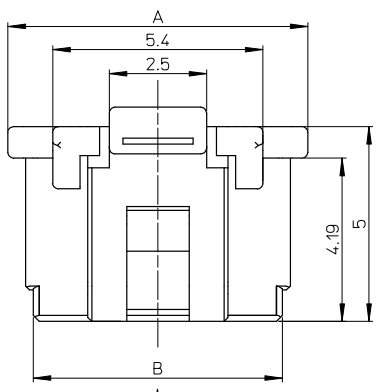
Use With
[501334 Crimp Terminal](#)

PLEASE CHECK WWW.MOLEX.COM FOR LATEST PART INFORMATION

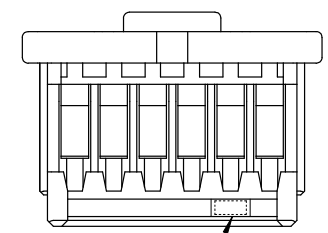
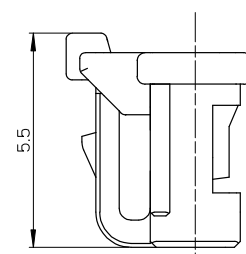
10 9 8 7 6 5 4 3 2 1



VIEW "D"



VIEW D



NOTES.

- 適合ターミナル: 501334-****
APPLICABLE TERMINAL : 501334-****
- 嵌合相手: 501331-****
MATE WITH : 501331-****
- 偶数極に適用
APPLY FOR EVEN CIRCUIT SIZE
- 2-5極は、SD-501330-001を参照下さい。
REFER TO SD-501330-001 ABOUT 2-5CKT.
- ELV 及び RoHS適合品
ELV AND RoHS COMPLIANT.
- 材質
MATERIAL
66ナイロン 66NYLON
ガラス無充填 GLASS FILLED 0%
UL94V-0

※対応可能な極数は、別途お問い合わせ下さい。

| | | | | | |
|------|------|------|--------------|------|----------------------------|
| 14.0 | 15.4 | 16.7 | 501330-15** | 15 | 501330-**0* 501330-**3* |
| 13.0 | 14.4 | 15.7 | 501330-14** | 14 | |
| 12.0 | 13.4 | 14.7 | 501330-13** | 13 | |
| 11.0 | 12.4 | 13.7 | 501330-12** | 12 | |
| 10.0 | 11.4 | 12.7 | 501330-11** | 11 | |
| 9.0 | 10.4 | 11.7 | 501330-10** | 10 | |
| 8.0 | 9.4 | 10.7 | 501330-09** | 9 | |
| 7.0 | 8.4 | 9.7 | 501330-08** | 8 | |
| 6.0 | 7.4 | 8.7 | 501330-07** | 7 | |
| 5.0 | 6.4 | 7.7 | 501330-06** | 6 | |
| C | B | A | MATERIAL NO. | CKT. | MODEL NO. |

| | | | | | | | |
|--|--|------------|----------------------------|--------------------|--|------------------------|---------------------------|
| REVISED EC NO: J2008-2811 D DRAWN BY DRYUNAKATA 2008/01/24 CHECKED BY CHYKHMATSUNO 2008/04/24 APPROVED BY APPR:NIKIITA 2008/04/25 | GENERAL TOLERANCES (UNLESS SPECIFIED) | | DIMENSION STYLE MM ONLY | | SCALE 10:1 | DESIGN UNITS METRIC | THIRD ANGLE PROJECTION |
| | 10 UNDER | ±0.2 | DRAWN BY NYOSHIDA | DATE 2004/07/30 | TITLE 1.0 WIRE TO BOARD CONN. 1-ROW RECEPTACLE HOUSING 6-15CKT. | | |
| | 10 OVER 30 UNDER | ±0.25 | CHECKED BY MYAGI | DATE 2004/07/30 | MOLEX INCORPORATED | | |
| | 30 OVER | ±0.3 | APPROVED BY MIYAZAWA | DATE 2004/07/30 | DOCUMENT NO. SD-501330-002 | SHEET NO. 1 OF 2 | |
| | ANGULAR ±3° | | MATERIAL NO. SEE TABLE | | THIS DRAWING CONTAINS INFORMATION THAT IS PROPRIETARY TO MOLEX INCORPORATED AND SHOULD NOT BE USED WITHOUT WRITTEN PERMISSION | | |
| DRAFT WHERE APPLICABLE MUST REMAIN WITHIN DIMENSIONS | | SIZE A3 | | | | | |

10 9 8 7 6 5 4 3 2 1

| 紫 VIOLET | 橙 ORANGE | 茶 BROWN | 緑 GREEN | 青 BLUE | 黄 YELLOW | 赤 RED | 色 COLOR | |
|--------------|--------------|--------------|--------------|--------------|--------------|--------------|------------|--------------|
| 501330-1539 | 501330-1538 | 501330-1537 | 501330-1536 | 501330-1534 | 501330-1533 | 501330-1532 | 15 | 501330-***3* |
| 501330-1439 | 501330-1438 | 501330-1437 | 501330-1436 | 501330-1434 | 501330-1433 | 501330-1432 | 14 | |
| 501330-1339 | 501330-1338 | 501330-1337 | 501330-1336 | 501330-1334 | 501330-1333 | 501330-1332 | 13 | |
| 501330-1239 | 501330-1238 | 501330-1237 | 501330-1236 | 501330-1234 | 501330-1233 | 501330-1232 | 12 | |
| 501330-1139 | 501330-1138 | 501330-1137 | 501330-1136 | 501330-1134 | 501330-1133 | 501330-1132 | 11 | |
| 501330-1039 | 501330-1038 | 501330-1037 | 501330-1036 | 501330-1034 | 501330-1033 | 501330-1032 | 10 | |
| 501330-0939 | 501330-0938 | 501330-0937 | 501330-0936 | 501330-0934 | 501330-0933 | 501330-0932 | 9 | |
| 501330-0839 | 501330-0838 | 501330-0837 | 501330-0836 | 501330-0834 | 501330-0833 | 501330-0832 | 8 | |
| 501330-0739 | 501330-0738 | 501330-0737 | 501330-0736 | 501330-0734 | 501330-0733 | 501330-0732 | 7 | |
| 501330-0639 | 501330-0638 | 501330-0637 | 501330-0636 | 501330-0634 | 501330-0633 | 501330-0632 | 6 | |
| MATERIAL NO. | MATERIAL NO. | MATERIAL NO. | MATERIAL NO. | MATERIAL NO. | MATERIAL NO. | MATERIAL NO. | CKT. | MODEL NO. |

| 白 WHITE | 色 COLOR | |
|--------------|------------|--------------|
| 501330-1500 | 15 | 501330-***00 |
| 501330-1400 | 14 | |
| 501330-1300 | 13 | |
| 501330-1200 | 12 | |
| 501330-1100 | 11 | |
| 501330-1000 | 10 | |
| 501330-0900 | 9 | |
| 501330-0800 | 8 | |
| 501330-0700 | 7 | |
| 501330-0600 | 6 | |
| MATERIAL NO. | CKT. | MODEL NO. |

| | | | | | | | |
|---|---------------------------------------|--|----------------------------|---|--|------------------------|------------------------|
| REVISED EC NO: J2008-2811 DRWNRKATA 2008/01/24 CHYKOHMATSUNO 2008/04/24 APPR:NIKIITA 2008/04/25 | GENERAL TOLERANCES (UNLESS SPECIFIED) | | DIMENSION STYLE MM ONLY | | SCALE --- | DESIGN UNITS METRIC | THIRD ANGLE PROJECTION |
| | 10 UNDER | ±0.2 | DRAWN BY NYOSHIDA | DATE 2004/07/30 | TITLE 1.0 WIRE TO BOARD CONN. 1-ROW RECEPTACLE HOUSING 6-15CKT. | | |
| | 10 OVER 30 UNDER | ±0.25 | CHECKED BY MYAGI | DATE 2004/07/30 | MOLEX INCORPORATED | | |
| | 30 OVER | ±0.3 | APPROVED BY MIYAZAWA | DATE 2004/07/30 | DOCUMENT NO. SD-501330-002 | | |
| ANGULAR ±--- ° | | DRAFT WHERE APPLICABLE MUST REMAIN WITHIN DIMENSIONS | | MATERIAL NO. SEE TABLE | SHEET NO. 2 OF 2 | | |
| SIZE A3 | | | | THIS DRAWING CONTAINS INFORMATION THAT IS PROPRIETARY TO MOLEX INCORPORATED AND SHOULD NOT BE USED WITHOUT WRITTEN PERMISSION | | | |