

**PLEASE CHECK WWW.MOLEX.COM FOR LATEST PART INFORMATION**

**Part Number:** [5013300400](#)  
**Status:** **Active**  
**Overview:** picoclasp  
**Description:** 1.00mm (.039") Pitch Pico-Clasp™ Wire-to-Board Female Housing, Single Row, with Friction Lock, 4 Circuits

**Documents:**

[3D Model](#) [Product Specification PS-501331-001 \(PDF\)](#)  
[Drawing \(PDF\)](#) [RoHS Certificate of Compliance \(PDF\)](#)

**General**

Product Family Crimp Housings  
 Series [501330](#)  
 Overview [picoclasp](#)  
 Product Name Pico-Clasp™

**Physical**

Circuits (maximum) 4  
 Color - Resin White  
 Gender Female  
 Glow-Wire Compliant No  
 Lock to Mating Part Yes  
 Material - Resin Nylon  
 Number of Rows 1  
 Packaging Type Bag  
 Panel Mount No  
 Pitch - Mating Interface (in) 0.039 In  
 Pitch - Mating Interface (mm) 1.00 mm  
 Polarized to Mating Part Yes  
 Stackable No  
 Temperature Range - Operating -40°C to +85°C

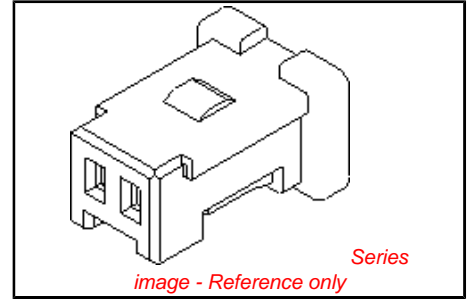
**Electrical**

Current - Maximum per Contact 1A

**Material Info**

**Reference - Drawing Numbers**

Packaging Specification SPK-501330-001  
 Product Specification PS-501331-001, RPS-501331-001, RPS-501331-002, RPS-501331-003, RPS-501331-006, RPS-501331-007, RPS-501568-002, RPS-501568-006  
 Sales Drawing SD-501330-001



**EU RoHS**

**ELV and RoHS Compliant**  
**REACH SVHC** Not Reviewed  
**Halogen-Free Status** Not Reviewed

**China RoHS**



**Need more information on product environmental compliance?**

Email [productcompliance@molex.com](mailto:productcompliance@molex.com)  
 For a multiple part number RoHS Certificate of Compliance, [click here](#)

Please visit the [Contact Us](#) section for any non-product compliance questions.

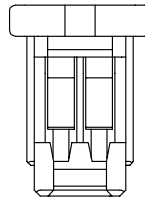
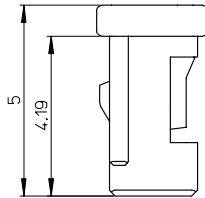
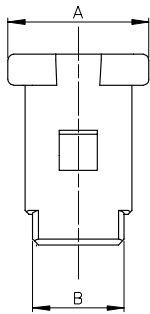
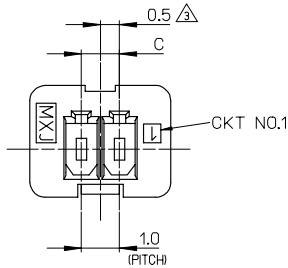
**Search Parts in this Series**  
[501330Series](#)

**Mates With**  
[501331 PCB Header](#) . [501568 PCB Header](#)

**Use With**  
[501334 Crimp Terminal](#)

**PLEASE CHECK WWW.MOLEX.COM FOR LATEST PART INFORMATION**

10 9 8 7 6 5 4 3 2 1

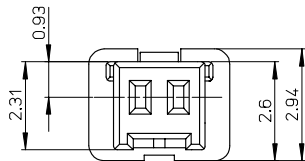


NOTES.

1. 適合ターミナル: 501334-\*\*\*\*  
APPLICABLE TERMINAL: 501334-\*\*\*\*
2. 嵌合相手: 501331-\*\*\*\*  
MATE WITH: 501331-\*\*\*\*
- △ 偶数極に適用  
APPLY FOR EVEN CIRCUIT SIZE
4. 6~15極は、SD-501330-002を参照下さい。  
REFER TO SD-501330-002 ABOUT 6-15CKT.

※対応可能な極数は、別途お問い合わせ下さい。

4.0	5.4	6.7	501330-0500	5	501330-***00
3.0	4.4	5.7	501330-0400	4	
2.0	3.4	4.7	501330-0300	3	
1.0	2.4	3.7	501330-0200	2	
C	B	A	MATERIAL NO.	CKT.	MODEL NO.



材料  
MATERIAL  
66ナイロン 色:白  
66NYLON COLOR:WHITE  
ガラス無充填  
GLASS FILLED: 0%  
UL94V-0

REVISED  
IEC NO. J2005-1980  
DRAWN BY NYOSHIDA 2005/01/18  
CHKD BY YAGI 2005/01/19  
APPR. ANODA 2005/01/26  
DESCRIPTION

GENERAL TOLERANCES (UNLESS SPECIFIED)	
10 UNDER	±0.2
10 OVER 30 UNDER	±0.25
30 OVER	±0.3
ANGULAR	±3 °
DRAFT WHERE APPLICABLE MUST REMAIN WITHIN DIMENSIONS	

DIMENSION STYLE	
MM ONLY	
DRAWN BY	DATE
NYOSHIDA	2004/07/30
CHECKED BY	DATE
MYAGI	2004/07/30
APPROVED BY	DATE
MIYAZAWA	2004/07/30
MATERIAL NO.	
SEE CHART	

SCALE	DESIGN UNITS	THIRD ANGLE PROJECTION
10:1	METRIC	☉ □
TITLE		
1.0 WIRE TO BOARD CONN. 1-ROW RECEPTACLE HOUSING 2-5CKT.		
MOLEX INCORPORATED		
DOCUMENT NO.	SHEET NO.	
SD-501330-001	1 OF 1	