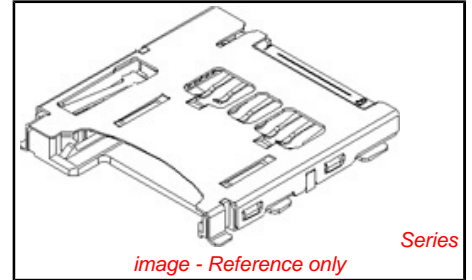


PLEASE CHECK WWW.MOLEX.COM FOR LATEST PART INFORMATION

Part Number: [0492250821](#)
Status: **Active**
Description: 1.10mm (.043") Pitch TransFlash Memory Card Connector, Reverse Type, With Detect Switch, Push-Push, Black Color Housing

Documents:

3D Model	Product Specification PS-49225-001 (PDF)
Packaging Specification (PDF)	RoHS Certificate of Compliance (PDF)
Drawing (PDF)	



General

Product Family	Memory Card Sockets
Series	49225
Button Type	Push-Push
Component Type	Header & Ejector (Host)
Product Name	TransFlash
Type	N/A

Physical

Card Detection Switch	Yes
Circuits (Loaded)	8
Circuits (maximum)	8
Color - Resin	Natural
Durability (mating cycles max)	7,000
Ejector Button Side	Left
Entry Angle	90° Angle (Side Entry)
Keying to Mating Part	Yes
Material - Metal	Phosphor Bronze, Stainless Steel
Material - Resin	High Temperature Thermoplastic
PCB Locator	No
PCB Mounting Side	Normal
PCB Retention	Yes
Packaging Type	Embossed Tape on Reel
Pitch - Mating Interface (in)	0.043 In
Pitch - Mating Interface (mm)	1.10 mm
Pitch - Term. Interface (in)	0.043 In
Pitch - Term. Interface (mm)	1.10 mm
Ports	1
Surface Mount Compatible (SMC)	Yes
Temperature Range - Operating	-25°C to +85°C

Electrical

Current - Maximum per Contact	0.5A
Shielded	Yes
Voltage - Maximum	100V

Material Info

Reference - Drawing Numbers

Product Specification	PS-49225-001, RPS-49225-001
Sales Drawing	SD-49225-201

EU RoHS

ELV and RoHS Compliant
REACH SVHC
 Not Reviewed
Halogen-Free Status
Halogen-Free

China RoHS



Need more information on product environmental compliance?

Email productcompliance@molex.com
 For a multiple part number RoHS Certificate of Compliance, [click here](#)

Please visit the [Contact Us](#) section for any non-product compliance questions.

Search Parts in this Series

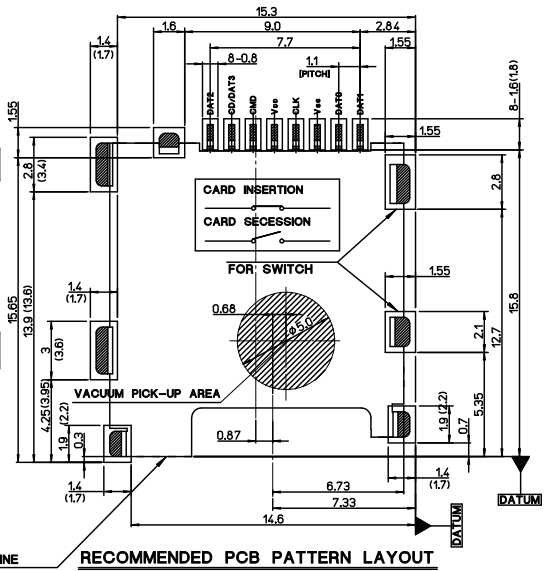
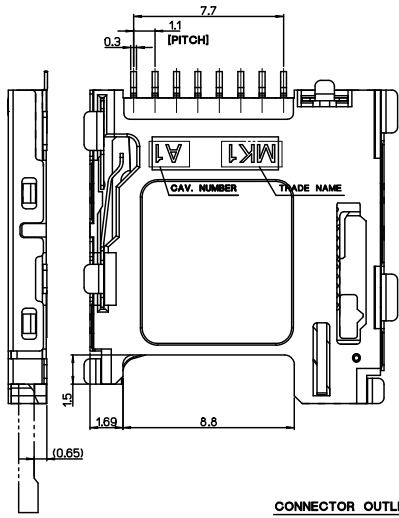
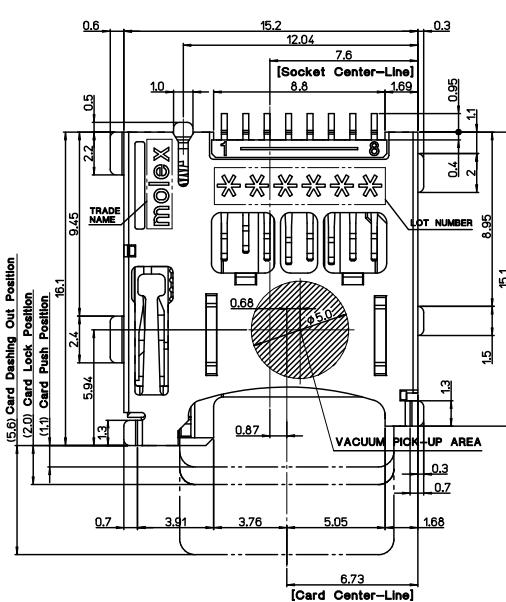
49225Series

Use With

TransFlash card

PLEASE CHECK WWW.MOLEX.COM FOR LATEST PART INFORMATION

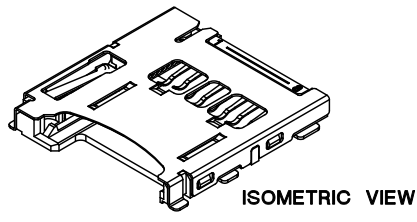
10 9 8 7 6 5 4 3 2 1



NOTES

1. MATERIALS: SEE TABLE
2. FINISHES: SEE TABLE
3. PRODUCT SPECIFICATION : PS-49225-001
4. COPLANARITY OF SOLDERTAILS : 0.1mm MAX.
 MISALIGNMENT OF SOLDER TAIL FROM "Z"
 UPPER DIRECTION 0.05 MAX., LOWER DIRECTION 0.1MAX.
5. PACKAGING SPECIFICATION : PK-49225-201

This connector has been tested for compatibility with both TransFlash and microSD cards, however, as this standard is in transition some specifications from different card makers may differ. Please contact Molex Korea before any design-in to discuss card compatibility issues.



REVISED EC NO: DRAWNS: JHUK100 2010/02/23 CHKD: YSOK1M APPR:	DESCRIPTION	QUALITY SYMBOLS	GENERAL TOLERANCES (UNLESS SPECIFIED)		DIMENSION STYLE		SCALE	DESIGN UNITS	THIRD ANGLE PROJECTION
			mm	INCH	MM ONLY				
REVISED EC NO: DRAWNS: JHUK100 2010/02/23 CHKD: YSOK1M APPR:	DESCRIPTION	QUALITY SYMBOLS	4 PLACES ± --- ± ---		DRAWN BY	DATE	5:1	METRIC	M-SD MEMORY CARD SOCKET P/P, REVERSE, WITH SWT LOW RETENTION FORCE
			3 PLACES ± --- ± ---		S. H. JOO	2005/09/14			
			2 PLACES ± 0.15 ± ---		CHECKED BY	DATE	MOLEX INCORPORATED		
			1 PLACE ± 0.20 ± ---		APPROVED BY	DATE		DOCUMENT NO.	SHEET NO.
			ANGULAR ± 1°		S. J. SEH	2005/09/14		SD-49225-201	1 OF 3
			DRAFT WHERE APPLICABLE MUST REMAIN WITHIN DIMENSIONS		SEE TABLE				
					THIS DRAWING CONTAINS INFORMATION THAT IS PROPRIETARY TO MOLEX INCORPORATED AND SHOULD NOT BE USED WITHOUT WRITTEN PERMISSION				

10 | 9 | 8 | 7 | 6 | 5 | 4 | 3 | 2 | 1

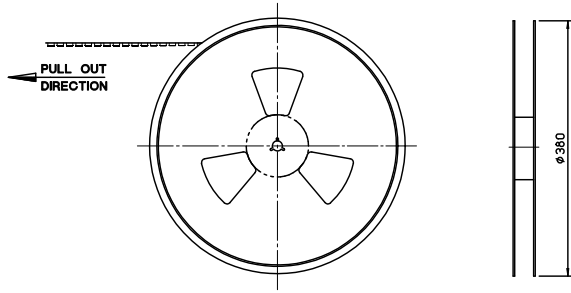
9	SPRING	49225-9001	STAINLESS STEEL	
8	PIN ROD	49225-9002	STAINLESS STEEL	
7	STOPPER TERMINAL	49772-8003	PHOS.-BRONZE	PURE-Sn over Ni
6	GND. TERMINAL	49771-8003	PHOS.-BRONZE	Selective-Au over Ni
5	SWITCH TERMINAL	49770-8003	PHOS.-BRONZE	Selective-Au over Ni
4	HEART CAM	49355-0001	LIQUID CRYSTAL POLYMER	Natural Color
3	HOUSING	49225-0891	LIQUID CRYSTAL POLYMER	
2	METAL SHELL	49769-5003	STAINLESS STEEL	Selective-Au over Ni
1	CONTACT TERMINAL 1,2,3	49768-8*30	PHOS.-BRONZE	Selective-Au over Ni
NO.	DESCRIPTION	ENGINEERING NO.	MATERIALS	FINISHES

REVISED E.C. NO: DRWNSJNGHYUKJ00 2010/02/23 CHKD:YSOOKIM APPR: REV:	QUALITY SYMBOLS	GENERAL TOLERANCES (UNLESS SPECIFIED)	DIMENSION STYLE	SCALE	DESIGN UNITS	THIRD ANGLE PROJECTION																		
	$\nabla=0$ $\nabla=0$	<table border="1"> <tr> <td></td> <td>mm</td> <td>INCH</td> </tr> <tr> <td>4 PLACES</td> <td>± ---</td> <td>± ---</td> </tr> <tr> <td>3 PLACES</td> <td>± ---</td> <td>± ---</td> </tr> <tr> <td>2 PLACES</td> <td>± 0.15</td> <td>± ---</td> </tr> <tr> <td>1 PLACE</td> <td>± 0.20</td> <td>± ---</td> </tr> <tr> <td colspan="3">ANGULAR ± 1 °</td> </tr> </table>		mm	INCH	4 PLACES	± ---	± ---	3 PLACES	± ---	± ---	2 PLACES	± 0.15	± ---	1 PLACE	± 0.20	± ---	ANGULAR ± 1 °			MM ONLY	5:1	METRIC	
		mm	INCH																					
	4 PLACES	± ---	± ---																					
3 PLACES	± ---	± ---																						
2 PLACES	± 0.15	± ---																						
1 PLACE	± 0.20	± ---																						
ANGULAR ± 1 °																								
DESCRIPTION	DRAWN BY S.H. JOO DATE 2005/09/14	CHECKED BY DATE	TITLE		M-SD MEMORY CARD SOCKET P/P, REVERSE WITH SWT LOW RETENTION FORCE																			
	APPROVED BY S. J. SEH DATE 2005/09/14	MATERIAL NO. SEE TABLE	MOLEX INCORPORATED		DOCUMENT NO. SD-49225-201 SHEET NO. 2 OF 3																			
DRAFT WHERE APPLICABLE MUST REMAIN WITHIN DIMENSIONS			THIS DRAWING CONTAINS INFORMATION THAT IS PROPRIETARY TO MOLEX INCORPORATED AND SHOULD NOT BE USED WITHOUT WRITTEN PERMISSION																					

tb_frame_A3_P_ME_T
Rev. E 2006/04/15

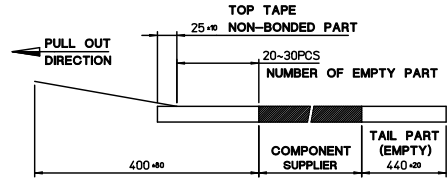
9 | 8 | 7 | 6 | 5 | 4 | 3 | 2 | 1

10 9 8 7 6 5 4 3 2 1

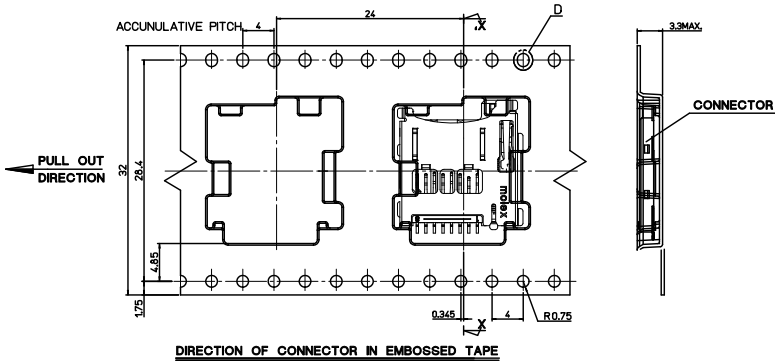


NOTES

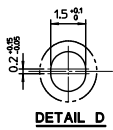
- 1. QUANTITY OF CONNECTORS : 1,100PCS/REEL
- 2. LEAD LENGTH



- 3. PEELING OFF FORCE OF COVER TAPE : 0.1N~0.59N(10.2GF~60GF)
(PEELING DIRECTION AS SHOW IN FOLLOW FIG.)
-- PEELING OFF SPEED : 300mm/Mn.(Ref.)



35902-1011	35908-1003	35902-2108	49225-0811	492250817	49225-0817	8
COVER TAPE	REEL	EMBOSSED TAPE	CONNECTOR	MATERIAL NO.	ENG. NO.	CKT



REVISED	EC NO: DRAWN: CHKD: APPR:	DESCRIPTION	QUALITY SYMBOLS		GENERAL TOLERANCES (UNLESS SPECIFIED)		DIMENSION STYLE		SCALE	DESIGN UNITS	THIRD ANGLE PROJECTION
			▽=0	▽=0	mm	INCH	MM ONLY	2:1	METRIC	☉	
REVISED	EC NO: DRAWN: CHKD: APPR:	DESCRIPTION	4 PLACES	± ---	± ---	DRAWN BY	DATE	TITLE	MATERIAL NO.	DOCUMENT NO.	SHEET NO.
			3 PLACES	± ---	± ---	S.H. JOO	2005/09/14				
			2 PLACES	± 0.15	± ---	CHECKED BY	DATE	APPROVED BY	DATE		
			1 PLACE	± 0.20	± ---	S. J. SEH	2005/09/14			SEE TABLE	
			ANGULAR ± 1°		DRAFT WHERE APPLICABLE MUST REMAIN WITHIN DIMENSIONS		SIZE		THIS DRAWING CONTAINS INFORMATION THAT IS PROPRIETARY TO MOLEX INCORPORATED AND SHOULD NOT BE USED WITHOUT WRITTEN PERMISSION		

9 8 7 6 5 4 3 2 1

9	SPRING	49225-9001	STAINLESS STEEL	
8	PIN ROD	49225-9002	STAINLESS STEEL	
7	STOPPER TERMINAL	49772-8003	PHOS.-BRONZE	PURE-Sn over Ni
6	GND. TERMINAL	49771-8003	PHOS.-BRONZE	Selective-Au over Ni
5	SWITCH TERMINAL	49770-8003	PHOS.-BRONZE	Selective-Au over Ni
4	HEART CAM	49355-0001	LIQUID CRYSTAL POLYMER	Natural Color
3	HOUSING	49225-0891	LIQUID CRYSTAL POLYMER	
2	METAL SHELL	49769-5003	STAINLESS STEEL	Selective-Au over Ni
1	CONTACT TERMINAL 1,2,3	49768-8*30	PHOS.-BRONZE	Selective-Au over Ni
NO.	DESCRIPTION	ENGINEERING NO.	MATERIALS	FINISHES

DWG. NO. SD-49225-201
 SIMILAR ITEM
 PROJECT NO. C
 B
 DO NOT SCALE DRAWING DIMENSION IN METRIC

F
 E
 D
 C
 B
 A

NEW RELEASE ECN NO. KOR2007-0077 DRWN: S.H.JOO 06/12/29 CHK: APPR: S.J.SEH	QUALITY SYMBOLS MAJOR = 0 CRITICAL = 0 C	GENERAL TOLERANCES: (UNLESS SPECIFIED)		SCALE 5 / 1	DESIGN UNITS <input checked="" type="checkbox"/> MM <input type="checkbox"/> INCH	THIRD ANGLE PROJECTION <input type="checkbox"/> THIRD ANGLE	DIMENSIONS: <input type="checkbox"/> INCH <input type="checkbox"/> INCH <input checked="" type="checkbox"/> MM <input type="checkbox"/> MM ONLY		SHT REV
		4 PLACES ±0.1	3 PLACES ±0.1	2 PLACES ±0.15	1 PLACE ±0.2	ANGULAR: ± °	DRAWN BY & DATE S.H.JOO 05/09/14		CHECKED BY & DATE S.H.JOO
A REV	DESCRIPTION	DRAFT WHERE APPLICABLE MUST REMAIN WITHIN DIMENSIONS		CAD FILENAME SD49225002.MI		MATERIAL NO. SEE TABLE		DRAWING NO. SD-49225-201	
		THIS DRAWING CONTAINS INFORMATION THAT IS PROPRIETARY TO MOLEX INCORPORATED AND SHOULD NOT BE USED WITHOUT WRITTEN PERMISSION.		SHEET NO 1 OF 2		SIZE B		KOREA MX-A3	

492250821	49225-0821
MATERIAL NO.	ENGINEERING NO.

TITLE:
microSD MEMORY CARD SOCKET
 PUSH-PUSH / REVERSE TYPE / WITH SWITCH
 (LOW RETENTION FORCE VERSION)

MOLEX INCORPORATED