

PLEASE CHECK WWW.MOLEX.COM FOR LATEST PART INFORMATION

Part Number: [0480372000](#)
Status: **Active**
Description: Universal Serial Bus (USB) Shielded I/O Plug, Type A, Right Angle, Surface Mount, 0.76µm (30µ") Gold (Au) Plating, PCB Thickness 1.20mm (.047") to 1.60mm (.063"), Tape on Reel Package, Lead Free

Documents:

[3D Model](#) [RoHS Certificate of Compliance \(PDF\)](#)
[Drawing \(PDF\)](#)

General

Product Family	I/O Connectors
Series	48037
Application	Wire-to-Board
Component Type	Plug
Product Name	USB
Type	A

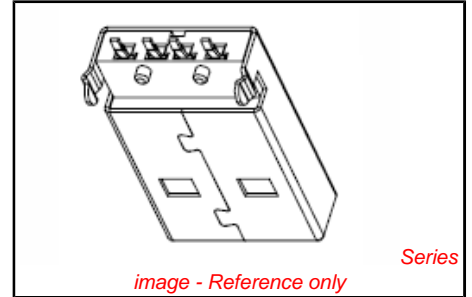
Physical

Boot Color	N/A
Circuits (Loaded)	4
Circuits (maximum)	4
Gender	Plug
Keying to Mating Part	Yes
Lock to Mating Part	Yes
Material - Plating Mating	Gold
Material - Plating Termination	Tin
Number of Rows	1
Orientation	Right Angle
PCB Locator	Yes
PCB Retention	Yes
PCB Thickness Recommended (in)	0.047 In, 0.062 In
PCB Thickness Recommended (mm)	1.20 mm, 1.60 mm
Packaging Type	Embossed Tape on Reel
Panel Mount	Yes
Pitch - Mating Interface (in)	0.078 In, 0.098 In
Pitch - Mating Interface (mm)	2.00 mm, 2.50 mm
Pitch - Term. Interface (in)	0.078 In, 0.098 In
Pitch - Term. Interface (mm)	2.00 mm, 2.50 mm
Plating min: Mating (µin)	30
Plating min: Mating (µm)	0.76
Polarized to Mating Part	Yes
Polarized to PCB	Yes
Ports	1
Surface Mount Compatible (SMC)	Yes
Temperature Range - Operating	-20°C to +85°C
Termination Interface: Style	Surface Mount
Waterproof / Dustproof	No

Electrical

Current - Maximum	1.5A
Shield Type	Full Shield
Shielded	Yes
Voltage - Maximum	150V AC (RMS)

Solder Process Data



EU RoHS

ELV and RoHS Compliant
REACH SVHC
 Not Reviewed
Halogen-Free Status
 Not Reviewed

China RoHS



Need more information on product environmental compliance?

Email productcompliance@molex.com
 For a multiple part number RoHS Certificate of Compliance, [click here](#)

Please visit the [Contact Us](#) section for any non-product compliance questions.

Search Parts in this Series
[48037Series](#)

Mates With
 USB Type A Receptacle

Max. Cycles at Max. Process Temperature 10
Process Temperature max. C 260

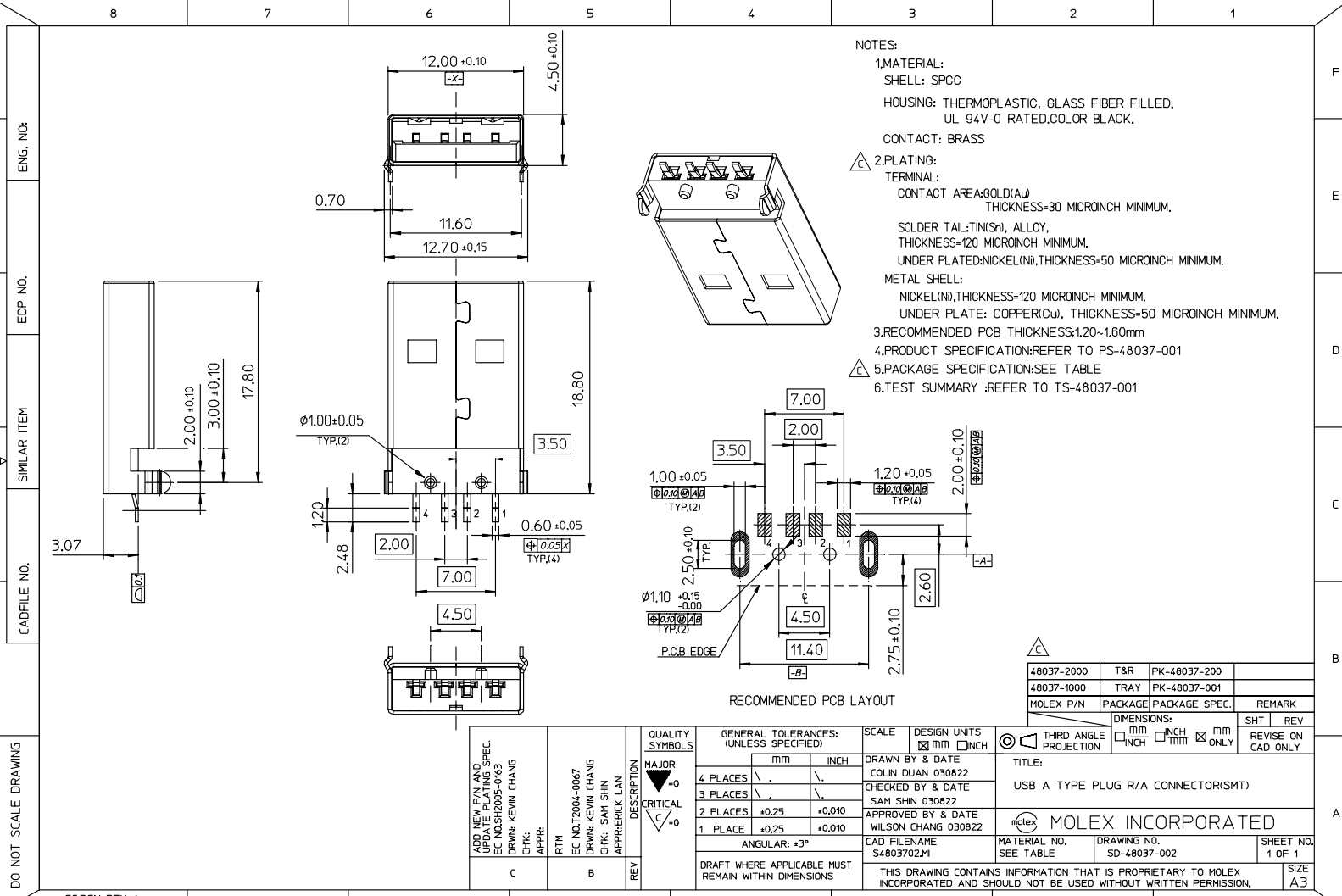
Material Info

Reference - Drawing Numbers

Sales Drawing SD-48037-002

This document was generated on 02/02/2010

PLEASE CHECK WWW.MOLEX.COM FOR LATEST PART INFORMATION



- NOTES:
- MATERIAL:
SHELL: SPCC
HOUSING: THERMOPLASTIC, GLASS FIBER FILLED, UL 94V-0 RATED, COLOR BLACK.
CONTACT: BRASS
 - PLATING:
TERMINAL:
CONTACT AREA: GOLD(Au)
THICKNESS=30 MICRONCH MINIMUM.
SOLDER TAIL: TIN(Sn), ALLOY,
THICKNESS=120 MICRONCH MINIMUM.
UNDER PLATED: NICKEL(Ni), THICKNESS=50 MICRONCH MINIMUM.
METAL SHELL:
NICKEL(Ni), THICKNESS=120 MICRONCH MINIMUM.
UNDER PLATE: COPPER(Cu), THICKNESS=50 MICRONCH MINIMUM.
 - RECOMMENDED PCB THICKNESS: 1.20-1.60mm
 - PRODUCT SPECIFICATION: REFER TO PS-48037-001
 - PACKAGE SPECIFICATION: SEE TABLE
 - TEST SUMMARY: REFER TO TS-48037-001

48037-2000	T&R	PK-48037-200	
48037-1000	TRAY	PK-48037-001	
MOLEX P/N	PACKAGE	PACKAGE SPEC.	REMARK

C	ADD NEW P/N AND UPDATE PLATING SPEC. EC NO:SH2005-0163 DRWN: KEVIN CHANG CHK: SHI SHIN APPR: RTM	B	EC NO: T2004-0067 DRWN: KEVIN CHANG CHK: SHI SHIN APPR: RTM	DESCRIPTION	QUALITY SYMBOLS	GENERAL TOLERANCES: (UNLESS SPECIFIED)		SCALE	DESIGN UNITS	THIRD ANGLE PROJECTION	DIMENSIONS:		SHT	REV
					MAJOR	mm	INCH	DRAWN BY & DATE	mm	INCH	mm	INCH	mm ONLY	REVISE ON CAD ONLY
					CRITICAL						TITLE:			
											MOLEX INCORPORATED			
											MATERIAL NO.	DRAWING NO.	SHEET NO.	SIZE
											SEE TABLE	SD-48037-002	1 OF 1	A3
											THIS DRAWING CONTAINS INFORMATION THAT IS PROPRIETARY TO MOLEX INCORPORATED AND SHOULD NOT BE USED WITHOUT WRITTEN PERMISSION.			

GC.DGN REV A
96/06/12 LEVEL 3