

**PLEASE CHECK WWW.MOLEX.COM FOR LATEST PART INFORMATION**

**Part Number:** [0449141001](#)  
**Status:** **Active**  
**Overview:** [microfit\\_30](#)  
**Description:** 3.00mm (.118") Pitch Micro-Fit 3.0 CPI™ Header, Compliant Pin Interface, Dual Row, Vertical, 10 Circuits, Tin (Sn) Plating, Glow Wire Compatible

**Documents:**

[3D Model](#) [Product Specification PS-43045 \(PDF\)](#)  
[Drawing \(PDF\)](#) [RoHS Certificate of Compliance \(PDF\)](#)

**Agency Certification**

CSA LR19980  
TUV R72081037  
UL E29179

**General**

Product Family PCB Headers  
Series [44914](#)  
Application Wire-to-Board  
Application Tooling Part Link 622008400  
Comments Glow Wire Equivalent Part Number [449141001](#) . High Temperature, Square Pin  
Overview [microfit\\_30](#)  
Product Literature Order No USA-106  
Product Name Micro-Fit 3.0 CPI™

**Physical**

Breakaway No  
Circuits (Loaded) 10  
Circuits (maximum) 10  
Color - Resin Black  
Durability (mating cycles max) 30  
Flammability 94V-0  
Glow-Wire Compliant Yes  
Material - Metal High Performance Alloy (HPA)  
Material - Plating Mating Tin  
Material - Plating Termination Tin  
Material - Resin High Temperature Thermoplastic  
Number of Rows 2  
Orientation Vertical  
PCB Locator Yes  
PCB Retention Yes  
Packaging Type Tray  
Pitch - Mating Interface (in) 0.118 In  
Pitch - Mating Interface (mm) 3.00 mm  
Plating min: Mating (µin) 200  
Plating min: Mating (µm) 5  
Plating min: Termination (µin) 200  
Plating min: Termination (µm) 5  
Polarized to PCB Yes  
Shrouded Fully  
Stackable No  
Surface Mount Compatible (SMC) No  
Temperature Range - Operating -40°C to +105°C  
Termination Interface: Style Through Hole - Compliant Pin

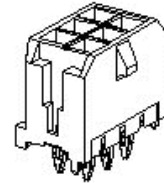


image - Reference only

Series

<p><b>EU RoHS</b>  <b>ELV and RoHS</b>  <b>Compliant</b>  <b>REACH SVHC</b>  <b>Contains SVHC: No</b>  <b>Halogen-Free</b>  <b>Status</b>  <b>Halogen-Free</b></p>	<p><b>China RoHS</b></p> 
--	--

**Need more information on product environmental compliance?**

Email [productcompliance@molex.com](mailto:productcompliance@molex.com)  
For a multiple part number RoHS Certificate of Compliance, [click here](#)

Please visit the [Contact Us](#) section for any non-product compliance questions.

**Search Parts in this Series**  
[44914Series](#)

**Mates With**  
[43025-1000](#)

**Application Tooling | FAQ**  
*Tooling specifications and manuals are found by selecting the products below. Crimp Height Specifications are then contained in the Application Tooling Specification document.*

Global	Description	Product #
	Micro-Fit™	0622008400
	Compliant Pin	
	Insertion Flat Rock	
	Tool	

**Electrical**

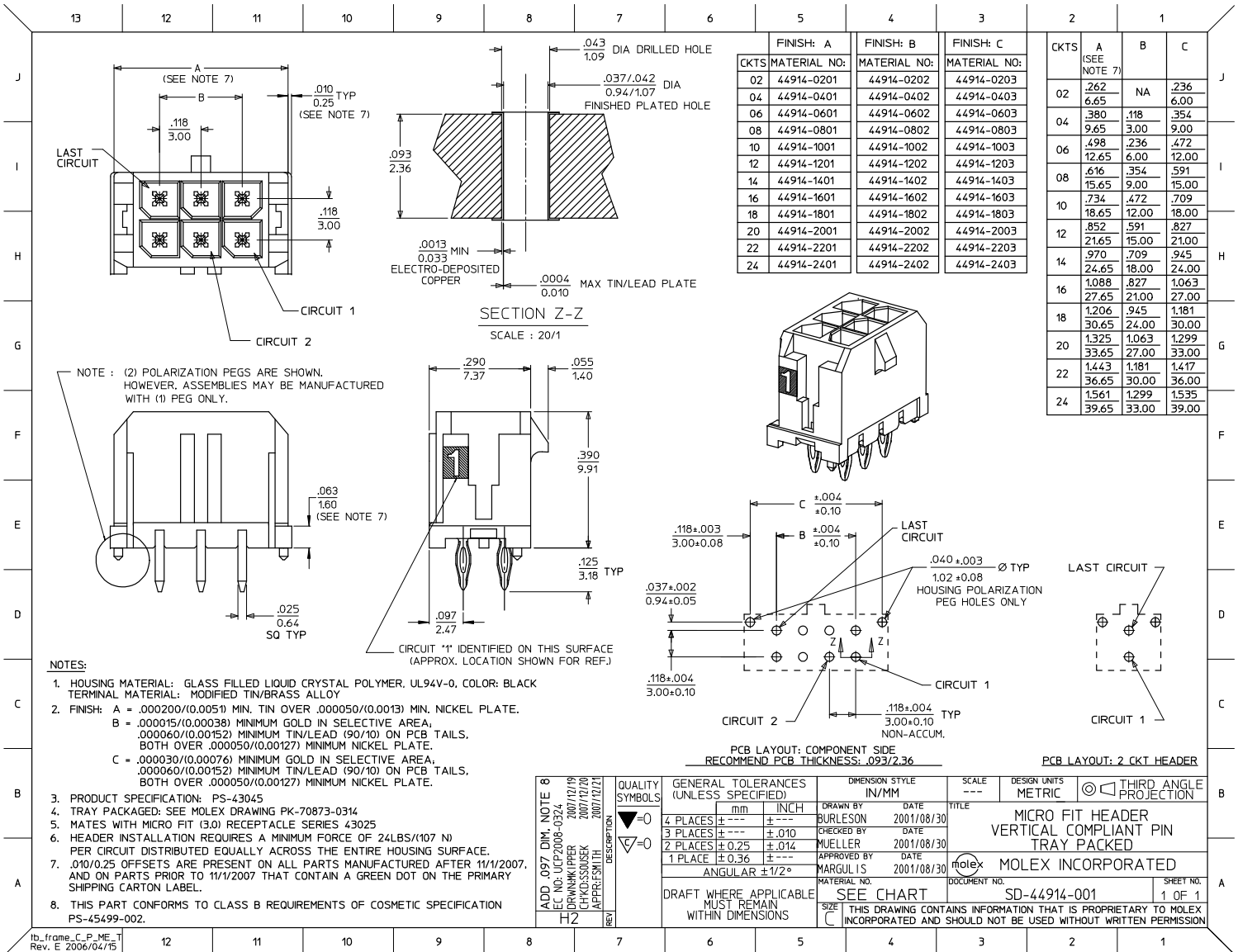
Current - Maximum per Contact 5A  
Voltage - Maximum 250V

**Material Info****Reference - Drawing Numbers**

Packaging Specification PK-70873-0314  
Product Specification PS-43045, RPS-43045-003, RPS-43045-004  
Sales Drawing SD-44914-001

This document was generated on 05/24/2010

**PLEASE CHECK [WWW.MOLEX.COM](http://WWW.MOLEX.COM) FOR LATEST PART INFORMATION**



CKTS	FINISH: A			FINISH: B			FINISH: C		
	MATERIAL NO:	MATERIAL NO:	MATERIAL NO:	MATERIAL NO:	MATERIAL NO:	MATERIAL NO:	MATERIAL NO:	MATERIAL NO:	
02	44914-0201	44914-0202	44914-0203						
04	44914-0401	44914-0402	44914-0403						
06	44914-0601	44914-0602	44914-0603						
08	44914-0801	44914-0802	44914-0803						
10	44914-1001	44914-1002	44914-1003						
12	44914-1201	44914-1202	44914-1203						
14	44914-1401	44914-1402	44914-1403						
16	44914-1601	44914-1602	44914-1603						
18	44914-1801	44914-1802	44914-1803						
20	44914-2001	44914-2002	44914-2003						
22	44914-2201	44914-2202	44914-2203						
24	44914-2401	44914-2402	44914-2403						

CKTS	A (SEE NOTE 7)		
	A	B	C
02	.262	NA	.236
04	6.65		6.00
06	.380	.118	.354
08	9.65	3.00	9.00
10	.498	.236	.472
12	12.65	6.00	12.00
14	.616	.354	.591
16	15.65	9.00	15.00
18	.734	.472	.709
20	18.65	12.00	18.00
22	.852	.591	.827
24	21.65	15.00	21.00
14	.970	.709	.945
16	24.65	18.00	24.00
18	1.088	.827	1.063
20	27.65	21.00	27.00
22	1.206	.945	1.181
24	30.65	24.00	30.00
14	1.325	1.063	1.299
16	33.65	27.00	33.00
18	1.443	1.181	1.417
20	36.65	30.00	36.00
22	1.561	1.299	1.535
24	39.65	33.00	39.00

- NOTES:**
- HOUSING MATERIAL: GLASS FILLED LIQUID CRYSTAL POLYMER, UL94V-0, COLOR: BLACK  
TERMINAL MATERIAL: MODIFIED TIN/BRASS ALLOY
  - FINISH: A = .000200/(0.0051) MIN. TIN OVER .000050/(0.0013) MIN. NICKEL PLATE.  
B = .000015/(0.00038) MINIMUM GOLD IN SELECTIVE AREA,  
.000060/(0.00152) MINIMUM TIN/LEAD (90/10) ON PCB TAILS,  
BOTH OVER .000050/(0.00127) MINIMUM NICKEL PLATE.  
C = .000030/(0.00076) MINIMUM GOLD IN SELECTIVE AREA,  
.000060/(0.00152) MINIMUM TIN/LEAD (90/10) ON PCB TAILS,  
BOTH OVER .000050/(0.00127) MINIMUM NICKEL PLATE.
  - PRODUCT SPECIFICATION: PS-43045
  - TRAY PACKAGED: SEE MOLEX DRAWING PK-70873-0314
  - MATES WITH MICRO FIT (3.0) RECEPTACLE SERIES 43025
  - HEADER INSTALLATION REQUIRES A MINIMUM FORCE OF 24LBS/(107 N) PER CIRCUIT DISTRIBUTED EQUALLY ACROSS THE ENTIRE SURFACE.
  - .010/.025 OFFSETS ARE PRESENT ON ALL PARTS MANUFACTURED AFTER 11/1/2007, AND ON PARTS PRIOR TO 11/1/2007 THAT CONTAIN A GREEN DOT ON THE PRIMARY SHIPPING CARTON LABEL.
  - THIS PART CONFORMS TO CLASS B REQUIREMENTS OF COSMETIC SPECIFICATION PS-45499-002.

ADD .097 DIM. NOTE 8 IEC NO: UCP2008-0324 DRAWN BY: DRANKLIPPER CHKD: SOUNSEK APPR: SMITH DATE: 2007/12/19 DATE: 2007/12/20 DATE: 2007/12/21	QUALITY SYMBOLS ▽=0 ▽=0	GENERAL TOLERANCES (UNLESS SPECIFIED): 4 PLACES ± .005 ± .005 3 PLACES ± .005 ± .010 2 PLACES ± .025 ± .014 1 PLACE ± 0.36 ± .005 ANGULAR ± 1/2°		DIMENSION STYLE IN/MM DRAWN BY: BURLESON DATE: 2001/08/30 CHECKED BY: MUELLER DATE: 2001/08/30 APPROVED BY: MARGULIS DATE: 2001/08/30	SCALE: --- DESIGN UNITS: METRIC THIRD ANGLE PROJECTION	
		DRAFT WHERE APPLICABLE MUST REMAIN WITHIN DIMENSIONS		SEE CHART THIS DRAWING CONTAINS INFORMATION THAT IS PROPRIETARY TO MOLEX INCORPORATED AND SHOULD NOT BE USED WITHOUT WRITTEN PERMISSION	MATERIAL NO. SD-44914-001 DOCUMENT NO.	SHEET NO. 1 OF 1
		MICRO FIT HEADER VERTICAL COMPLIANT PIN TRAY PACKED		MOLEX INCORPORATED		