

PLEASE CHECK WWW.MOLEX.COM FOR LATEST PART INFORMATION

Part Number: [0444720854](#)
Status: **Active**
Description: 4.20mm (.165") Pitch Mini-Fit HCS™ Header, Dual Row, Vertical, without Snap-in Plastic Peg PCB Lock, 8 Circuits, PA Polyamide Nylon 6/6 94V-2, without Drain Holes

Documents:

[3D Model](#)
[Drawing \(PDF\)](#)
[Packaging Specification \(PDF\)](#)
[Product Specification PS-44476-001 \(PDF\)](#)
[RoHS Certificate of Compliance \(PDF\)](#)

Agency Certification

CSA LR19980
 UL E29179

General

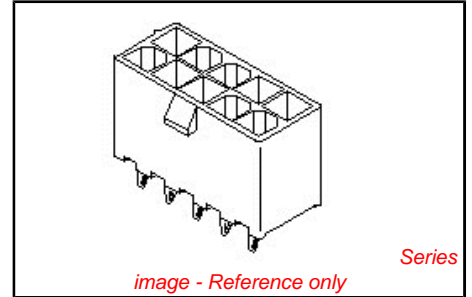
Product Family PCB Headers
 Series 44472
 Application Wire-to-Board
 Comments Square Pin|Solder Type
 Product Name Mini-Fit HCS™

Physical

Breakaway No
 Circuits (Loaded) 8
 Circuits (maximum) 8
 Color - Resin Natural
 Durability (mating cycles max) 30
 Flammability 94V-2
 Glow-Wire Compliant No
 Material - Metal High Performance Alloy (HPA)
 Material - Plating Mating Tin
 Material - Plating Termination Tin
 Material - Resin Nylon
 Number of Rows 2
 Orientation Vertical
 PCB Locator Yes
 PCB Retention None
 PCB Thickness Recommended (in) 0.070 In
 PCB Thickness Recommended (mm) 1.80 mm
 Packaging Type Tray
 Pitch - Mating Interface (in) 0.165 In
 Pitch - Mating Interface (mm) 4.20 mm
 Plating min: Mating (µin) 100
 Plating min: Mating (µm) 2.50
 Plating min: Termination (µin) 100
 Plating min: Termination (µm) 2.50
 Polarized to PCB Yes
 Shrouded Partial
 Stackable No
 Surface Mount Compatible (SMC) No
 Temperature Range - Operating -40°C to +105°C
 Termination Interface: Style Through Hole

Electrical

Current - Maximum per Contact 11A
 Voltage - Maximum 600V



<p>EU RoHS ELV and RoHS Compliant REACH SVHC Contains SVHC: No Halogen-Free Status Not Reviewed</p>	<p>China RoHS</p>
--	--------------------------

Need more information on product environmental compliance?

Email productcompliance@molex.com
 For a multiple part number RoHS Certificate of Compliance, [click here](#)

Please visit the [Contact Us](#) section for any non-product compliance questions.

Search Parts in this Series
[44472Series](#)

Mates With
[5557d](#)

Solder Process Data

Duration at Max. Process Temperature (seconds)	5
Lead-free Process Capability	Wave Capable (TH only)
Max. Cycles at Max. Process Temperature	1
Process Temperature max. C	260

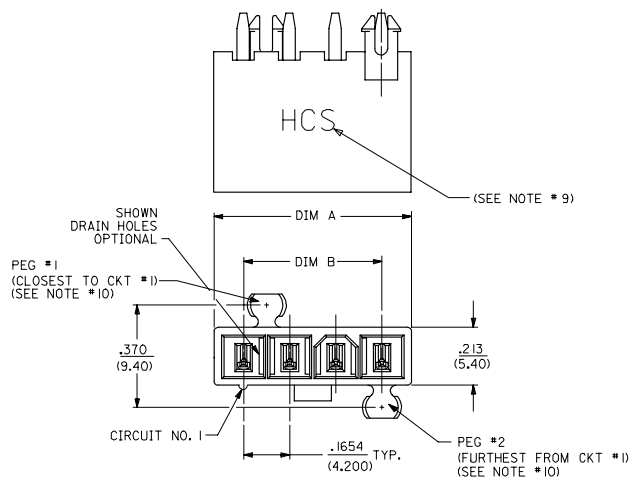
Material Info**Reference - Drawing Numbers**

Product Specification	PS-44476-001, RPS-44476-001
Sales Drawing	SDA-44472-****

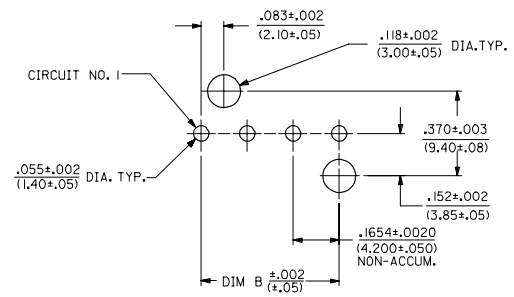
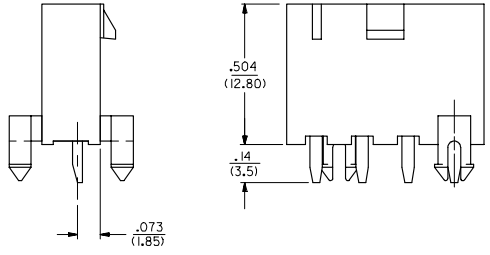
This document was generated on 03/19/2010

PLEASE CHECK WWW.MOLEX.COM FOR LATEST PART INFORMATION

CKT SIZE	DIM A	DIM B
4	.709 (18.00)	.496 (12.60)
5	.874 (22.20)	.661 (16.80)
6	1.039 (26.40)	.827 (21.00)
7	1.205 (30.60)	.992 (25.20)
8	1.370 (34.80)	1.157 (29.40)
9	1.535 (39.00)	1.323 (33.60)
10	1.701 (43.20)	1.488 (37.80)
11	1.866 (47.40)	1.654 (42.00)
12	2.031 (51.60)	1.819 (46.20)



- NOTES:
- MATERIALS:
HOUSING:
*1"-NYLON 6/6, UL94 V-2, COLOR: NATURAL
*2"-NYLON 6/6, UL94 V-0, COLOR: NATURAL
*3"-NYLON 6/6, UL94 V-2, COLOR: BLACK
TERMINALS:
COPPER ALLOY
 - TERMINAL PLATING:
*T"=.000100/(0.00254) MIN. BRIGHT TIN OVER
.000050/(0.00127) MIN. NICKEL
*W"=.000030/(0.00076) MIN. SELECT GOLD AND
.000100/(0.00254) MIN. SELECT MATTE TIN
OVER .000050/(0.00127) MIN. NICKEL OVERALL
*3"=.000100/(0.00254) MIN. MATTE TIN OVER
.000050/(0.00127) MIN. NICKEL
*THE PRIMARY SHIPPING CARTON WILL BE LABELED
"ELV AND ROHS COMPLIANT", CARTONS WITHOUT THIS
LABEL MAY CONTAIN PRODUCT WITH TIN-LEAD PLATING.
 - PRODUCT SPECIFICATION: PS-44476-001
 - PACKAGING: SEE CHARTS
 - PART MATES WITH MINI-FIT JR. RECEPTACLE NO. 5557.
 - PART IS NOT DESIGNED FOR CURRENT SHARING.
 - PARTS ARE NOT TO BE MATED OR UN-MATED WHILE CIRCUITS ARE LIVE.
 - 44472-2470 ONLY FOR WIDER LOCKING RAMP.
 - PARTS PRODUCED AFTER JULY 1, 2004 WILL HAVE "HCS" MARKING INSTEAD OF BLACK STRIPE.
 - SEE CHART FOR PARTS WITH PEGS REMOVED.
 - PART CONFORMS TO CLASS 'B' REQUIREMENTS OF COSMETIC SPECIFICATION PS-45499-002.

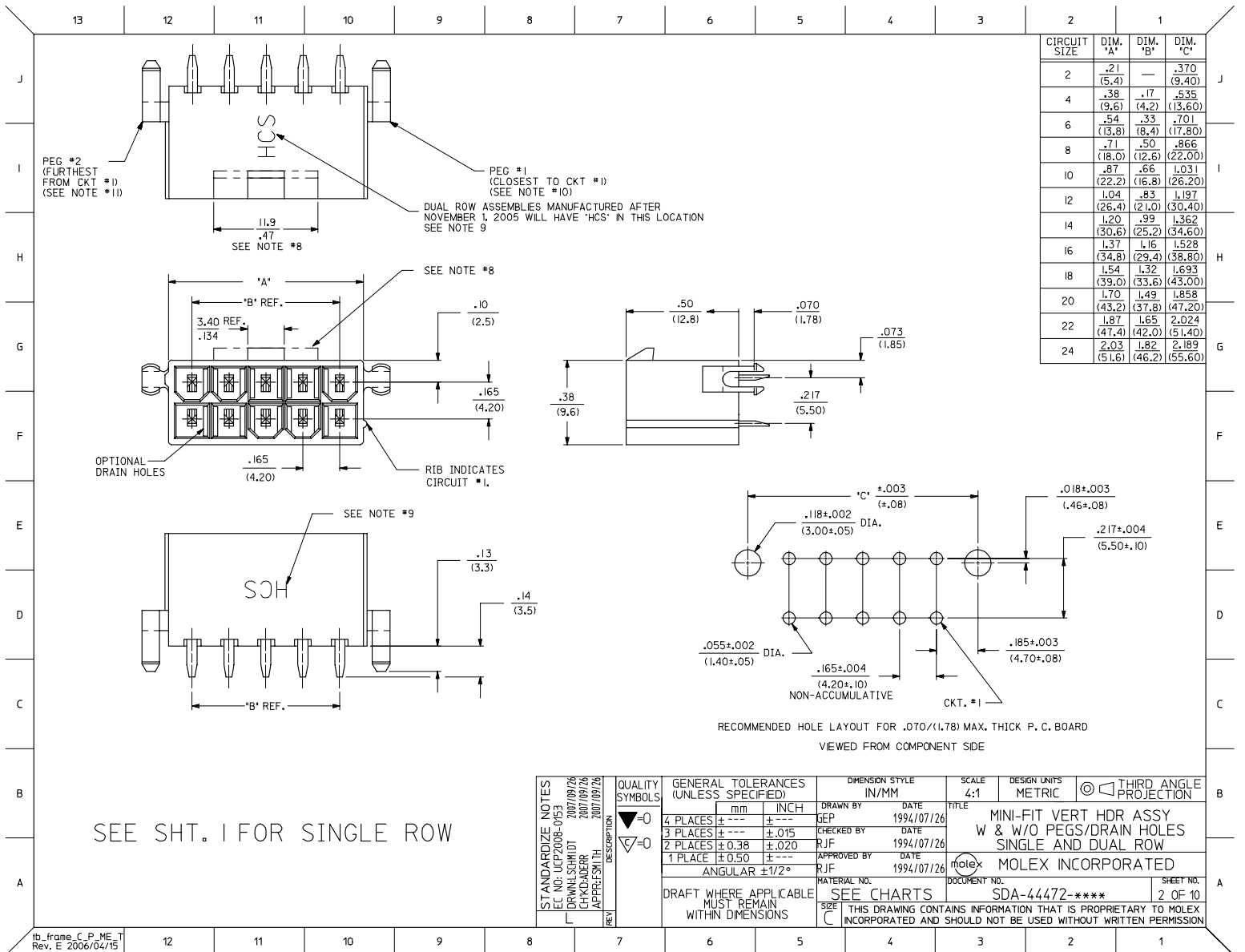


10	L
9	L
8	L
7	L
6	L
5	L
4	L
3	L
2	L
1	L
SHT	REV

LEGEND:
44472 - ** **
CIRCUIT SIZE
(04-12 FOR SINGLE ROW)
(02-24 FOR DUAL ROW)
ASSEMBLY VERSION
(01 THRU 49 FOR SINGLE ROW)
(50 THRU 99 FOR DUAL ROW)

SEE SHT. 2 FOR DUAL ROW
• THE CHART FOR SINGLE ROW PRODUCT IS ON PAGE 7

STANDARDIZE NOTES	QUALITY SYMBOLS	GENERAL TOLERANCES (UNLESS SPECIFIED)		DIMENSION STYLE	SCALE	DESIGN UNITS	THIRD ANGLE PROJECTION
		mm	INCH	IN/MM	4:1	METRIC	
EC NO: UCP2008-0163 DRWNSCHM01 2007/09/26 CHKADDER 2007/09/26 APPRFSMITH 2007/09/26 REV DESCRIPTION	▽=0 ▽=0	4 PLACES ±.005 ±.005	3 PLACES ±.015 ±.015	DRAWN BY SEP	DATE 1994/07/25	MINI-FIT VERT HDR ASSY W & W/O PEGS/DRAIN HOLES SINGLE AND DUAL ROW MOLEX INCORPORATED	SHEET NO. 1 OF 10
		2 PLACES ±0.38 ±.020	1 PLACE ±0.50 ±.020	CHECKED BY R/JF	DATE 1994/07/25		
		ANGULAR ±1/2°		APPROVED BY R/JF	DATE 1994/07/25		
		DRAFT WHERE APPLICABLE MUST REMAIN WITHIN DIMENSIONS		MATERIAL NO. SEE CHARTS	DOCUMENT NO. SDA-44472-****		
THIS DRAWING CONTAINS INFORMATION THAT IS PROPRIETARY TO MOLEX INCORPORATED AND SHOULD NOT BE USED WITHOUT WRITTEN PERMISSION							



CIRCUIT SIZE	DIM. 'A'	DIM. 'B'	DIM. 'C'
2	.21 (5.4)	—	.370 (9.40)
4	.38 (9.6)	.17 (4.2)	.535 (13.60)
6	.54 (13.8)	.33 (8.4)	.701 (17.80)
8	.71 (18.0)	.50 (12.6)	.866 (22.00)
10	.87 (22.2)	.66 (16.8)	1.031 (26.20)
12	1.04 (26.4)	.83 (21.0)	1.197 (30.40)
14	1.20 (30.6)	.99 (25.2)	1.362 (34.60)
16	1.37 (34.8)	1.16 (29.4)	1.528 (38.80)
18	1.54 (39.0)	1.32 (33.6)	1.693 (43.00)
20	1.70 (43.2)	1.49 (37.8)	1.858 (47.20)
22	1.87 (47.4)	1.65 (42.0)	2.024 (51.40)
24	2.03 (51.6)	1.82 (46.2)	2.189 (55.60)

SEE SHT. 1 FOR SINGLE ROW

STANDARDIZE NOTES EC NO. UCP2008-0163 DRAWN/SCHMIDT 2007/09/26 CHK/ADDER 2007/09/26 APPR/SMITH 2007/09/26	QUALITY SYMBOLS ▽=0 ▽=0	GENERAL TOLERANCES (UNLESS SPECIFIED)	DIMENSION STYLE IN/MM	SCALE 4:1	DESIGN UNITS METRIC	THIRD ANGLE PROJECTION	
		4 PLACES ± --- ± --- 3 PLACES ± --- ± .015 2 PLACES ± 0.38 ± .020 1 PLACE ± 0.50 ± ---	DRAWN BY SEP	DATE 1994/07/26	TITLE MINI-FIT VERT HDR ASSY W & W/O PEGS/DRAIN HOLES SINGLE AND DUAL ROW		
		ANGULAR ±1/2°	CHECKED BY R/JF	DATE 1994/07/26	APPROVED BY R/JF	DATE 1994/07/26	MOLEX INCORPORATED
	DRAFT WHERE APPLICABLE MUST REMAIN WITHIN DIMENSIONS	MATERIAL NO. SEE CHARTS	DOCUMENT NO. SDA-44472-****	SHEET NO. 2 OF 10	THIS DRAWING CONTAINS INFORMATION THAT IS PROPRIETARY TO MOLEX INCORPORATED AND SHOULD NOT BE USED WITHOUT WRITTEN PERMISSION		

	13		12		11		10		9		8		7		6		5		4		3		2		1				
J	PLATING: 1 (SEE NOTE 2) DRAINS: WITHOUT DRAIN HOLES PEGS: WITH PEGS MAT'L: 94V-2 [NATURAL] PACKAGING: PK-44472-001						PLATING: 1 (SEE NOTE 2) DRAINS: WITHOUT DRAIN HOLES PEGS: WITH PEGS MAT'L: 94V-O [NATURAL] PACKAGING: PK-44472-001						PLATING: 1 (SEE NOTE 2) DRAINS: WITH DRAIN HOLES PEGS: WITH PEGS MAT'L: 94V-2 [NATURAL] PACKAGING: PK-44472-001						PLATING: 1 (SEE NOTE 2) DRAINS: WITH DRAIN HOLES PEGS: WITH PEGS MAT'L: 94V-O [NATURAL] PACKAGING: PK-44472-001						J				
I	ITEM NO.				CKTS		ITEM NO.				CKTS		ITEM NO.				CKTS		ITEM NO.				CKTS		ITEM NO.				CKTS
	44472-0250				2		44472-0251				2		44472-0252				2		44472-0253				2		44472-0254				2
	44472-0450				4		44472-0451				4		44472-0452				4		44472-0453				4		44472-0454				4
	44472-0650				6		44472-0651				6		44472-0652				6		44472-0653				6		44472-0654				6
	44472-0850				8		44472-0851				8		44472-0852				8		44472-0853				8		44472-0854				8
	44472-1050				10		44472-1051				10		44472-1052				10		44472-1053				10		44472-1054				10
	44472-1250				12		44472-1251				12		44472-1252				12		44472-1253				12		44472-1254				12
	44472-1450				14		44472-1451				14		44472-1452				14		44472-1453				14		44472-1454				14
	44472-1650				16		44472-1651				16		44472-1652				16		44472-1653				16		44472-1654				16
	44472-1850				18		44472-1851				18		44472-1852				18		44472-1853				18		44472-1854				18
	44472-2050				20		44472-2051				20		44472-2052				20		44472-2053				20		44472-2054				20
	44472-2250				22		44472-2251				22		44472-2252				22		44472-2253				22		44472-2254				22
	44472-2450				24		44472-2451				24		44472-2452				24		44472-2453				24		44472-2454				24

G	PLATING: 1 (SEE NOTE 2) DRAINS: WITHOUT DRAIN HOLES PEGS: WITHOUT PEGS MAT'L: 94V-2 [NATURAL] PACKAGING: PK-44472-001						PLATING: 1 (SEE NOTE 2) DRAINS: WITHOUT DRAIN HOLES PEGS: WITHOUT PEGS MAT'L: 94V-O [NATURAL] PACKAGING: PK-44472-001												G											
F	ITEM NO.		HOUSING NO.		CKTS		ITEM NO.			CKTS		ITEM NO.			CKTS		ITEM NO.			CKTS		ITEM NO.			CKTS		ITEM NO.			CKTS
	44472-0254				2		44472-0255			2		44472-0256			2		44472-0257			2		44472-0258			2		44472-0259			2
	44472-0454				4		44472-0455			4		44472-0456			4		44472-0457			4		44472-0458			4		44472-0459			4
	44472-0654				6		44472-0655			6		44472-0656			6		44472-0657			6		44472-0658			6		44472-0659			6
	44472-0854				8		44472-0855			8		44472-0856			8		44472-0857			8		44472-0858			8		44472-0859			8
	44472-1054				10		44472-1055			10		44472-1056			10		44472-1057			10		44472-1058			10		44472-1059			10
	44472-1254				12		44472-1255			12		44472-1256			12		44472-1257			12		44472-1258			12		44472-1259			12
	44472-1454				14		44472-1455			14		44472-1456			14		44472-1457			14		44472-1458			14		44472-1459			14
	44472-1654				16		44472-1655			16		44472-1656			16		44472-1657			16		44472-1658			16		44472-1659			16
	44472-1854				18		44472-1855			18		44472-1856			18		44472-1857			18		44472-1858			18		44472-1859			18
	44472-2054				20		44472-2055			20		44472-2056			20		44472-2057			20		44472-2058			20		44472-2059			20
	44472-2254				22		44472-2255			22		44472-2256			22		44472-2257			22		44472-2258			22		44472-2259			22
	44472-2454				24		44472-2455			24		44472-2456			24		44472-2457			24		44472-2458			24		44472-2459			24

• ITEMS PRECEDED BY AN *X* ARE NOT AVAILABLE.

PLATING NOTE EC NO: UCP2008-0153 DRWLSCHMIDT 2007/09/26 CHKADDER 2007/09/26 APPRESMITH 2007/09/26 REV DESCRIPTION	QUALITY SYMBOLS	GENERAL TOLERANCES (UNLESS SPECIFIED)	DIMENSION STYLE	SCALE	DESIGN UNITS	THIRD ANGLE PROJECTION	
	▽=0	4 PLACES ± --- ± ---	IN/MM	---	METRIC		
	▽=0	3 PLACES ± --- ± ---					
		2 PLACES ± --- ± ---					
		1 PLACE ± --- ± ---					
		ANGULAR ±1/2°					
		DRAFT WHERE APPLICABLE MUST REMAIN WITHIN DIMENSIONS	DRAWN BY	DATE	TITLE		
			LEM	1999/02/22	MINI-FIT VERT HDR ASSY W & W/O PEGS/DRAIN HOLES SINGLE AND DUAL ROW		
			CHECKED BY	DATE			
			MAB	1999/02/22			
			APPROVED BY	DATE			
			RRE	1999/02/22			
			MATERIAL NO.	DOCUMENT NO.			
			SEE CHART	SDA-44472-****			
			SIZE C			SHEET NO. 3 OF 10	
			THIS DRAWING CONTAINS INFORMATION THAT IS PROPRIETARY TO MOLEX INCORPORATED AND SHOULD NOT BE USED WITHOUT WRITTEN PERMISSION				