

PLEASE CHECK WWW.MOLEX.COM FOR LATEST PART INFORMATION

Part Number: [0430200608](#)
Status: **Active**
Overview: [Micro-Fit, 3.0™](#)
Description: 3.00mm (.118") Pitch Micro-Fit 3.0™ Plug Housing, Dual Row, with Panel Mount Ears, Halogen-Free, 6 Circuits, Glow Wire Compatible

Documents:

[3D Model](#) [Product Specification PS-43045 \(PDF\)](#)
[Drawing \(PDF\)](#) [RoHS Certificate of Compliance \(PDF\)](#)

Agency Certification

CSA LR19980
TUV R72081037
UL E29179

General

Product Family Crimp Housings
Series [43020](#)
Overview [Micro-Fit, 3.0™](#)
Product Name Micro-Fit 3.0™

Physical

Circuits (maximum) 6
Circuits Detail 6
Color - Resin Black
Flammability 94V-0
Gender Male
Glow-Wire Compliant Yes
Lock to Mating Part Yes
Material - Resin Polyester
Number of Rows 2
Packaging Type Bag
Panel Mount Yes
Pitch - Mating Interface (in) 0.118 In
Pitch - Mating Interface (mm) 3.00 mm
Pitch - Term. Interface (in) 0.118 In
Pitch - Term. Interface (mm) 3.00 mm
Polarized to Mating Part Yes
Stackable No
Temperature Range - Operating -40°C to +105°C

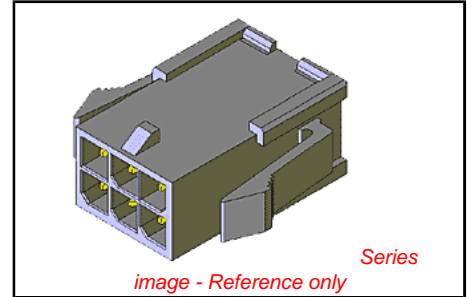
Electrical

Current - Maximum per Contact 5A

Material Info

Reference - Drawing Numbers

Product Specification PS-43045
Sales Drawing SD-43020-001



<p>EU RoHS ELV and RoHS Compliant REACH SVHC Contains SVHC: No Halogen-Free Status Not Reviewed</p>	<p>China RoHS</p>
--	--------------------------

Need more information on product environmental compliance?
Email productcompliance@molex.com
For a multiple part number RoHS Certificate of Compliance, [click here](#)
Please visit the [Contact Us](#) section for any non-product compliance questions.

Search Parts in this Series
[43020Series](#)

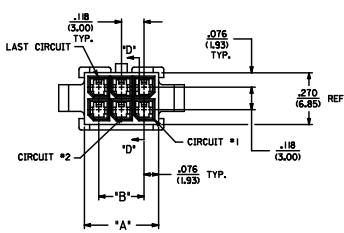
Mates With
[43025 Micro-Fit 3.0™ Receptacle Housing](#)

Use With
[Micro-Fit 3.0™ Crimp Terminal, Male](#)

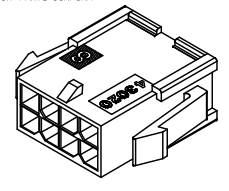
PLEASE CHECK WWW.MOLEX.COM FOR LATEST PART INFORMATION

ASSEMBLY ITEM NUMBER	PART CHARACTERISTICS	
	NUMBER OF POSITION	PANEL MOUNT OPTION
43020-0208	2	YES
43020-0209	2	NO
43020-0408	4	YES
43020-0409	4	NO
43020-0808	8	YES
43020-0809	8	NO
43020-0808	8	YES
43020-0809	8	NO
43020-1008	10	YES
43020-1009	10	NO
43020-1208	12	YES
43020-1209	12	NO
	14	YES
	14	NO
	16	YES
	16	NO
	16	YES
	16	NO
	20	YES
	20	NO
	22	YES
	22	NO
	24	YES
	24	NO

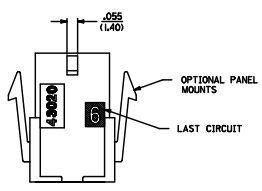
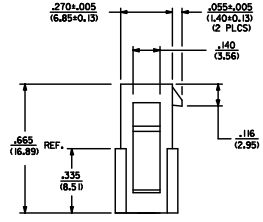
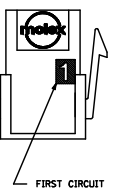
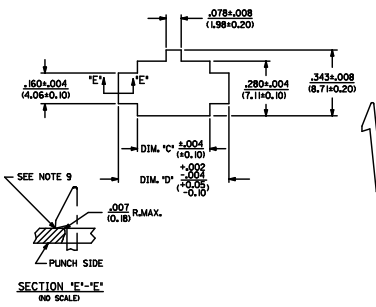
CKT. NO.	DIM. 'A'	DIM. 'B'	DIM. 'C'	DIM. 'D'
2	.152/(3.86)	N/A	.156/(4.20)	.311/(7.90)
4	.270/(6.85)	.118/(3.00)	.284/(7.20)	.429/(10.90)
6	.388/(9.85)	.236/(6.00)	.402/(10.20)	.547/(13.89)
8	.506/(12.85)	.354/(9.00)	.520/(13.20)	.665/(16.89)
10	.624/(15.85)	.472/(12.00)	.638/(16.20)	.783/(19.89)
12	.742/(18.85)	.591/(15.00)	.756/(19.20)	.901/(22.89)
14	.860/(21.85)	.709/(18.00)	.874/(22.20)	1.019/(25.88)
16	.978/(24.85)	.827/(21.00)	.992/(25.20)	1.137/(28.88)
18	1.096/(27.85)	.945/(24.00)	1.110/(28.20)	1.255/(31.88)
20	1.215/(30.85)	1.063/(27.00)	1.229/(31.22)	1.373/(34.87)
22	1.333/(33.85)	1.181/(30.00)	1.347/(34.22)	1.491/(37.87)
24	1.451/(36.85)	1.299/(33.00)	1.465/(37.22)	1.609/(40.87)



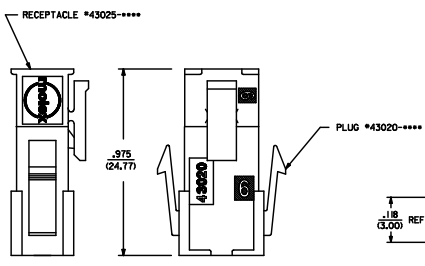
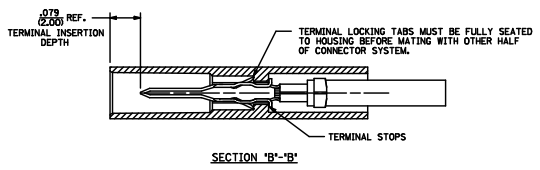
- NOTES:
- HOUSING MATERIAL: UNFILLED NYLON 6, UL 94V-0, IEC 60335-1, 4TH EDITION GLOW WIRE CAPABLE, COLOR - BLACK
 - FINISH: N/A
 - PRODUCT SPECIFICATION: PS-43045
 - PACKAGING SPECIFICATION: N/A
 - THIS HOUSING MATES WITH MICRO-FIT RECEPTACLE #43025-****
 - THIS HOUSING TO BE USED WITH MOLEX MALE TERMINAL #43031-****
 - DESIGNED FOR .055/(1.4) MINIMUM TO A .100/(2.54) MAXIMUM THICK PANEL OR PRINTED CIRCUIT BOARD.
 - SEE SECTION 'D'-D' FOR TERMINAL ORIENTATION IN HOUSING.
 - PANEL MOUNT FEATURES MUST LOCK ON SIDE OPPOSITE PUNCH SIDE FOR OPTIMUM RETENTION.
 - THIS PART CONFORMS TO CLASS 'B' REQUIREMENTS OF COSMETIC SPECIFICATION PS-45499-002, EXCEPT 2 AND 4. CIRCUIT PARTS CONFORM TO CLASS 'C' SURFACE REQUIREMENTS.



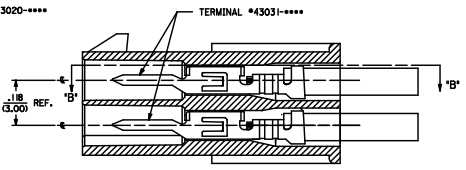
PLUG WITH OPTIONAL PANEL MOUNTS
ISO VIEW
(8 CIRCUIT SHOWN)



RECOMMENDED PANEL CUT-OUT



MATED MICRO-FIT CONNECTOR



SECTION 'D'-D' WITH TERMINAL SCALE

ADD 2 CUT PART # END - LECTRO-0857 APPROVED BY: CHYKOSOUSEK APPROVAL DATE: 2008/09/01 APPROVAL SIGNATURE: [Signature]	QUALITY SYMBOLS	GENERAL TOLERANCES (UNLESS SPECIFIED)	DIMENSION STYLE	SCALE	DESIGN UNITS	THIRD ANGLE PROJECTION	
	$\nabla=0$ $\nabla=0$	4 PLACES ± .010 3 PLACES ± .015 2 PLACES ± 0.25 1 PLACE ± 0.35 ANGULAR ±1/2°	IN/MH DATE: 2008/01/18 DRAWN BY: MKIPPER CHECKED BY: SSOUSEK APPROVED BY: FSMITH DATE: 2008/01/28	IN/MH	---	METRIC	
	DRAFT WHERE APPLICABLE	MATERIAL NO.	SEE CHART	DOCUMENT NO.	SD-43020-001	SHEET NO.	1 OF 1
	MUST REMAIN WITHIN DIMENSIONS	THIS DRAWING CONTAINS INFORMATION THAT IS PROPRIETARY TO MOLEX INCORPORATED AND SHOULD NOT BE USED WITHOUT WRITTEN PERMISSION					