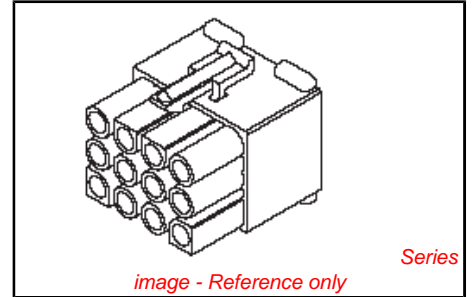


PLEASE CHECK WWW.MOLEX.COM FOR LATEST PART INFORMATION

Part Number: [0039036124](#)
Status: **Active**
Overview: [standard_093](#)
Description: 2.36mm (.093") Diameter Standard .093" Pin and Socket Receptacle Housing With Positive Latch, UL 94V-2, 12 Circuits

Documents:

3D Model	Product Specification PS-3191-003 (PDF)
Drawing (PDF)	Product Specification PS-3191-005 (PDF)
Product Specification PS-3191-001 (PDF)	RoHS Certificate of Compliance (PDF)



Agency Certification

CSA	LR19980
TUV	R72081037
UL	E29179

General

Product Family	Crimp Housings
Series	3191
Comments	Polarized to Mating Part
Overview	standard_093
Product Name	Standard .093"

Physical

Breakaway	No
Circuits (maximum)	12
Circuits Detail	3x4
Color - Resin	Natural
Flammability	94V-2
Gender	Dual
Glow-Wire Compliant	No
Keying to Mating Part	None
Lock to Mating Part	Yes
Material - Resin	Nylon
Number of Rows	3
Packaging Type	Bag
Panel Mount	No
Pitch - Mating Interface (in)	0.264 In
Pitch - Mating Interface (mm)	6.71 mm
Polarized to Mating Part	Yes
Stackable	No
Temperature Range - Operating	-40°C to +105°C

Electrical

Current - Maximum per Contact	7A
-------------------------------	----

Material Info

Old Part Number	3191-12R1
-----------------	-----------

Reference - Drawing Numbers

Packaging Specification	SPK-3191-001
Product Specification	PS-3191-001, PS-3191-003, PS-3191-005, RPS-3191-001, RPS-3191-002
Sales Drawing	SD-3191-12R1*

<p>EU RoHS ELV and RoHS Compliant REACH SVHC Contains SVHC: No Halogen-Free Status Not Reviewed</p>	<p>China RoHS</p>
--	--------------------------

Need more information on product environmental compliance?

Email productcompliance@molex.com
 For a multiple part number RoHS Certificate of Compliance, [click here](#)

Please visit the [Contact Us](#) section for any non-product compliance questions.

Search Parts in this Series
[3191Series](#)

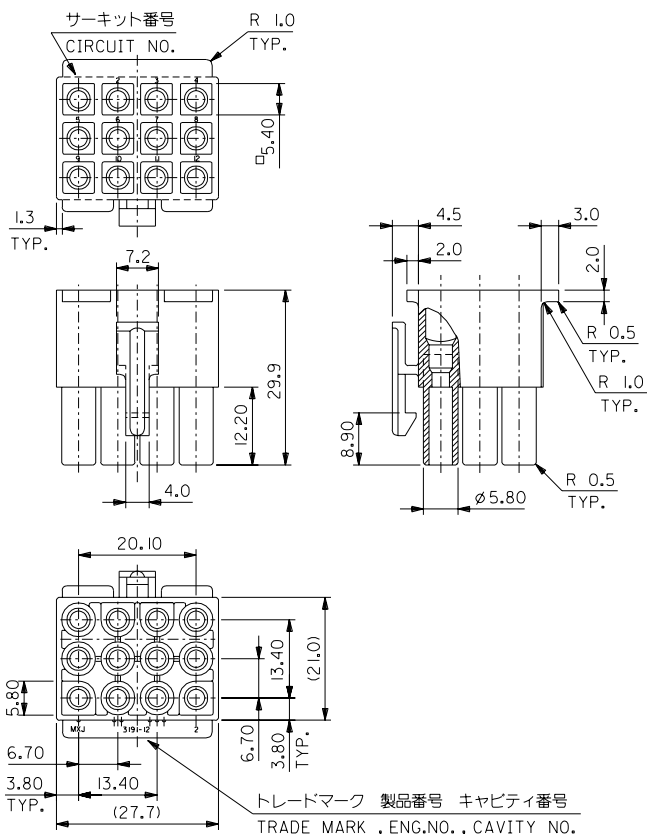
Mates With
[3191](#) Pin and Socket Plug, [5219](#) Vertical PCB Header

Use With
[1189](#) Crimp Terminals, [1190](#) Crimp Terminals, [1380](#) Male Crimp Terminals, [1381](#) Female Crimp Terminals, [1433](#) Crimp Terminals, [1434](#) Male Crimp Terminals, [2605](#), [2606](#), [1973](#), [2151](#), [2273](#), [2870](#), [2871](#), [4272](#), Lin

This document was generated on 05/19/2010

PLEASE CHECK WWW.MOLEX.COM FOR LATEST PART INFORMATION

DWG. NO. SD-3191-12R1-*



注) NOTE.
1. () 内寸法は参考
(DIMENSIONS IN () ARE REFERENCE)

3191-12R1-201	39-03-6125	ナイロン66	NYLON66	94V-0
3191-12R1	39-03-6124	ナイロン66	NYLON66	94V-2
ENG.NO.	EDP.NO.	材料	MATERIAL	NO.

DO NOT SCALE DRAWING		E84NO. DRWN: CHFK: APPR:		E83NO. DRWN: CHFK: APPR:		E82NO. DRWN: CHFK: APPR:		E81NO. DRWN: CHFK: APPR:		REBONO. JC2000-0626 DRWN: K.KOHAMA CHK: T.YAMAGUCHI APPR: M.FUKUSHIMA		MATERIAL 材料 表参照 SEE TABLE		GENERAL TOLERANCES: (UNLESS SPECIFIED) 10 UNDER 未満 10 OVER 以上 30 UNDER 未満 30 OVER 以上		SCALE 1:1 DESIGN UNITS <input checked="" type="checkbox"/> mm <input type="checkbox"/> INCH		DRAWN BY & DATE K.KOHAMA '00/ 3/28 CHECKED BY & DATE T.YAMAGUCHI '00/ 3/31 APPROVED BY & DATE M.FUKUSHIMA '00/ 3/31		DIMENSIONS: <input type="checkbox"/> mm <input type="checkbox"/> INCH <input checked="" type="checkbox"/> mm ONLY		SHT 1 REV	
REV										FINISH 仕上げ		ANGLE 角度		CAD FILENAME S319112.S10		TITLE: 12 CKT. REC. HS'G (.093 DIA. TERM.)		MATERIAL NO. 3191-12R1-*		DRAWING NO. SD-3191-12R1-*		SHEET NO. 1	
WIRE RANGE 適用電線範囲										INS. RANGE 被覆外径		+0.25 +0.25 +0.35 +0.35		+3°		MATERIAL NO. 3191-12R1-*		DRAWING NO. SD-3191-12R1-*		SIZE B		EN-02J(O97) MXJ-54	