

PLEASE CHECK WWW.MOLEX.COM FOR LATEST PART INFORMATION

Part Number: [0357501710](#)
Status: **Active**
Description: Ring Tongue Terminal for 9-14 AWG (2.20~6.70mm²), Stud Size 8 M4, Tin Plating

Documents:

[Drawing \(PDF\)](#) [RoHS Certificate of Compliance \(PDF\)](#)
[Product Specification PS-35750-005 \(PDF\)](#)

General

Product Family	Ring and Spade Terminals
Series	35750
Crimp Quality Equipment	Yes
Mil-Spec	N/A
Product Name	N/A
Type	Ring

Physical

Barrel Type	Open
Insulation	None
Material - Plating Mating	Tin
Packaging Type	Reel
Plating min: Mating (µin)	40
Plating min: Mating (µm)	1
Plating min: Termination (µin)	40
Plating min: Termination (µm)	1
Stud Size	8 (M4)
Temperature Range - Operating	-40°C to +105°C
Termination Interface: Style	Crimp or Compression
Wire Insulation Diameter	5.00mm (.197") max.
Wire Size AWG	10, 12, 14
Wire Size mm ²	2.20 - 6.70

Electrical

Voltage - Maximum	300V AC
-------------------	---------

Material Info

Reference - Drawing Numbers

Product Specification	PS-35750-005
Sales Drawing	SD-35750-17*0

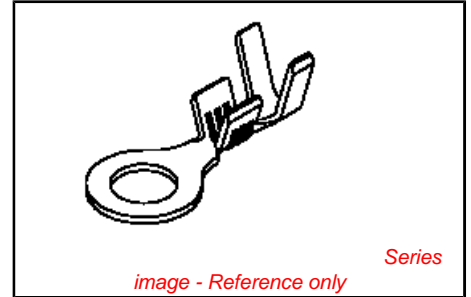


image - Reference only

<p>EU RoHS ELV and RoHS Compliant REACH SVHC Contains SVHC: No Halogen-Free Status Halogen-Free</p>	<p>China RoHS</p>
--	--------------------------

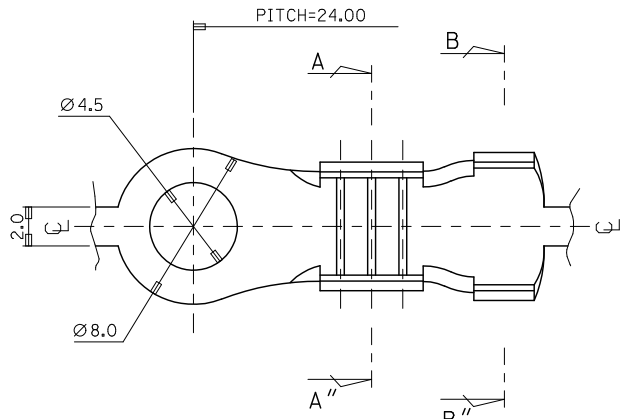
Need more information on product environmental compliance?

Email productcompliance@molex.com
 For a multiple part number RoHS Certificate of Compliance, [click here](#)

Please visit the [Contact Us](#) section for any non-product compliance questions.

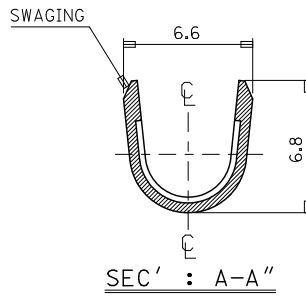
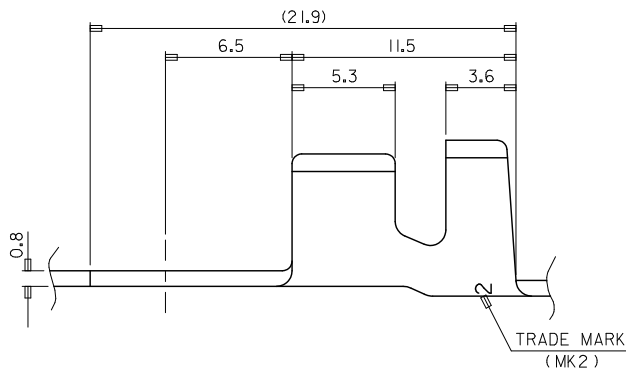
Search Parts in this Series
[35750Series](#)

PLEASE CHECK WWW.MOLEX.COM FOR LATEST PART INFORMATION

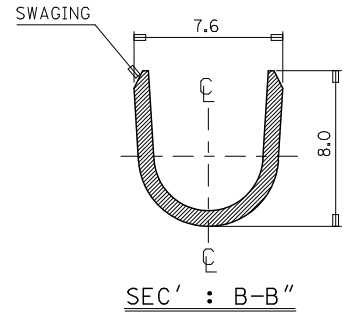


NOTES.

1. MATERIAL : BRASS 0.8 THICKNESS
2. FINISH : 35750-1700 : UNPLATED
35750-1710 : POST PLATED TIN
3. APPLICABLE WIRE : AWG#8~AWG#12[®]
INSULATION RANGE $\phi 5.4$ MAX[®]
4. RECOMMENDED LENGTH OF WIRE STRIP IS 7.0~7.8mm[®]



SEC' : A-A''



SEC' : B-B''

REVISED EC NO: KOR2010-0083 DRWN: HPARK01 2009/12/22 CHYKHYI YANG 2009/12/22 APPR: YUNSIKKIM 2009/12/22 REV DESCRIPTION	QUALITY SYMBOLS	GENERAL TOLERANCES (UNLESS SPECIFIED) <table border="1"> <tr> <td></td> <td>mm</td> <td>INCH</td> </tr> <tr> <td>4 PLACES</td> <td>± 0.3</td> <td>± 0.012</td> </tr> <tr> <td>3 PLACES</td> <td>± 0.4</td> <td>± 0.015</td> </tr> <tr> <td>2 PLACES</td> <td>± 0.5</td> <td>± 0.020</td> </tr> <tr> <td>1 PLACE</td> <td>± 0.8</td> <td>± 0.031</td> </tr> </table> ANGULAR ± 2° DRAFT WHERE APPLICABLE MUST REMAIN WITHIN DIMENSIONS		mm	INCH	4 PLACES	± 0.3	± 0.012	3 PLACES	± 0.4	± 0.015	2 PLACES	± 0.5	± 0.020	1 PLACE	± 0.8	± 0.031	DIMENSION STYLE MM ONLY DRAWN BY JS.KANG DATE 1993/07/08 CHECKED BY BK.CHOI DATE 1993/07/08 APPROVED BY DATE	SCALE 1:1 DESIGN UNITS METRIC THIRD ANGLE PROJECTION	TITLE 4.5 RING TM(LA204)
			mm	INCH																
	4 PLACES		± 0.3	± 0.012																
	3 PLACES		± 0.4	± 0.015																
2 PLACES	± 0.5	± 0.020																		
1 PLACE	± 0.8	± 0.031																		
MATERIAL NO. SEE NOTES DOCUMENT NO. SD-35750-17*0 SHEET NO. 1 OF 01	MOLEX INCORPORATED																			
THIS DRAWING CONTAINS INFORMATION THAT IS PROPRIETARY TO MOLEX INCORPORATED AND SHOULD NOT BE USED WITHOUT WRITTEN PERMISSION																				
SIZE A3																				