

PLEASE CHECK WWW.MOLEX.COM FOR LATEST PART INFORMATION

Part Number: [0355071200](#)
Status: **Active**
Overview: sherlock
Description: 2.00mm (.079") Pitch Sherlock™ Wire-to-Board Housing, Natural, 12 Circuits

Documents:

3D Model	Product Specification PS-35507-002 (PDF)
Drawing (PDF)	RoHS Certificate of Compliance (PDF)
Product Specification PS-35507-001 (PDF)	

Agency Certification

CSA	LR19980
UL	E29179

General

Product Family	Crimp Housings
Series	35507
Overview	sherlock
Product Name	Sherlock™

Physical

Circuits (maximum)	12
Circuits Detail	12
Color - Resin	Natural
Flammability	94V-0
Gender	Female
Glow-Wire Compliant	No
Keying to Mating Part	None
Lock to Mating Part	Yes
Material - Resin	Polyester
Number of Rows	1
Packaging Type	Bag
Panel Mount	No
Pitch - Mating Interface (in)	0.079 In
Pitch - Mating Interface (mm)	2.00 mm
Polarized to Mating Part	Yes
Stackable	No
Temperature Range - Operating	-40°C to +105°C

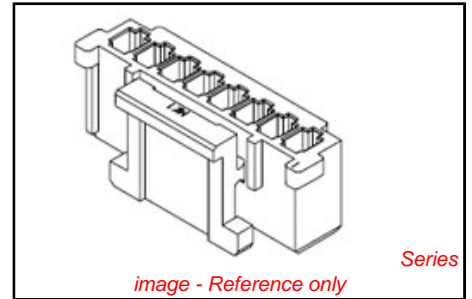
Electrical

Current - Maximum per Contact	2A
-------------------------------	----

Material Info

Reference - Drawing Numbers

Product Specification	PS-35507-001, PS-35507-002, RPS-35507-003, RPS-35507-004, RPS-35507-005, RPS-35507-009, RPS-35507-010, RPS-35507-011
Sales Drawing	SD-35507-001



EU RoHS

ELV and RoHS Compliant
REACH SVHC Contains SVHC: No
Halogen-Free Status
Not Halogen-Free

China RoHS



Need more information on product environmental compliance?

Email productcompliance@molex.com
 For a multiple part number RoHS Certificate of Compliance, [click here](#)

Please visit the [Contact Us](#) section for any non-product compliance questions.

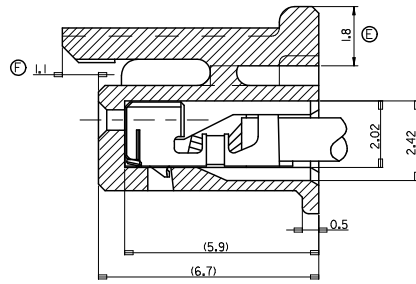
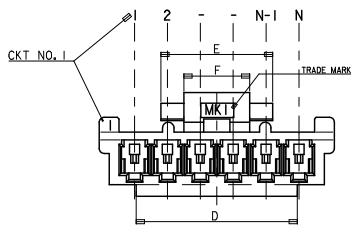
Search Parts in this Series
[35507Series](#)

Mates With
 Sherlock™ Wire-to-Board Header [35362](#) , [35363](#)

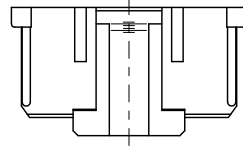
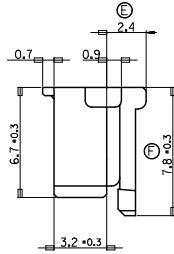
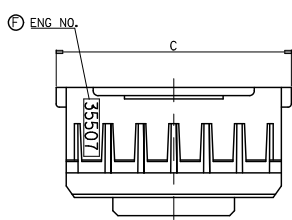
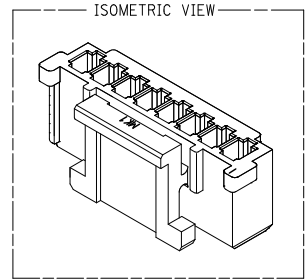
Use With
 2.00mm (.079") Pitch Crimp Terminal [50212](#) , [10440](#)

PLEASE CHECK WWW.MOLEX.COM FOR LATEST PART INFORMATION

10 9 8 7 6 5 4 3 2 1



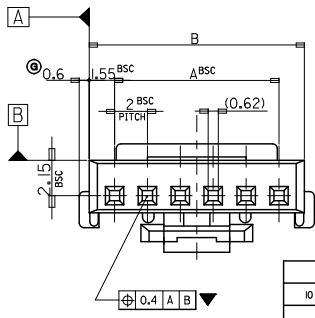
TERMINAL INSERTED DRAWING
SCALE 2:1



NOTES

1. MATERIAL : POLYESTER, UL94V-0
2. FINISH : VARIABLE COLOR (SEE LEGEND)
3. PRODUCT SPECIFICATION NO : PS-35507-001
4. APPLICABLE TERMINAL : 50212-8000
5. MATES WITH : 35362-***, 35363-***

4	4	27.8	32.3	31.1	28	-150*	15
		25.8	30.3	29.1	26	-140*	14
		23.8	28.3	27.1	24	-130*	13
		21.8	26.3	25.1	22	-120*	12
		19.8	24.3	23.1	20	-110*	11
		17.8	22.3	21.1	18	-100*	10
7	7	15.8	20.3	19.1	16	-090*	9
8.0	10.8	13.8	18.3	17.1	14	-080*	8
4	4	11.8	16.3	15.1	12	-070*	7
		9.8	14.3	13.1	10	-060*	6
		7.8	12.3	11.1	8	-050*	5
4/0	6/4	5.8	10.3	9.1	6	35507-040*	4
F	E	D	C	B	A	ENG. NO.	CKT



LEGEND

***0**

CKT NO. _____ COLOR _____

- 0 : NATURAL
- 1 : BLACK
- 2 : RED
- 3 : YELLOW
- 4 : BLUE
- 5 : GREEN

30 over	+0.3
10 over 30 under	±0.25
10 under	±0.2
ANGLE	±3°
GENERAL TOLERANCE	

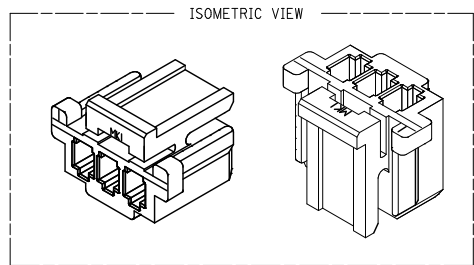
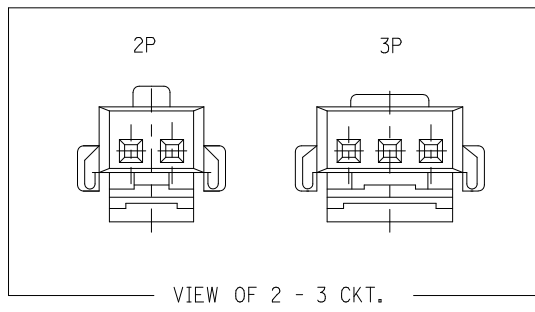
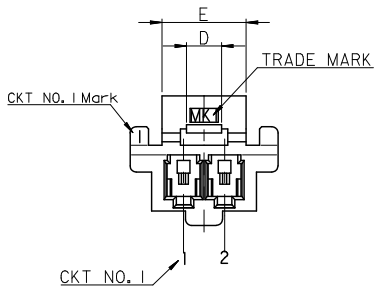
REVISED
EC NO: KOR2008-0029
DRAWN: HLEED5 2009/12/18
CHKD: SKIM 2009/12/18
APPR: YUNS.KKIM 2009/12/21

QUALITY SYMBOLS	GENERAL TOLERANCES (UNLESS SPECIFIED)	
	mm	INCH
$\nabla=1$	4 PLACES ± --- ± ---	
$\nabla=0$	3 PLACES ± --- ± ---	
	2 PLACES ± --- ± ---	
	1 PLACE ± --- ± ---	
	ANGULAR ± --- °	
DRAFT WHERE APPLICABLE MUST REMAIN WITHIN DIMENSIONS		

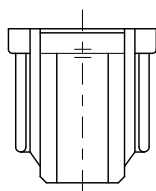
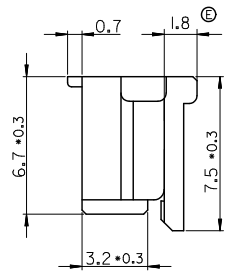
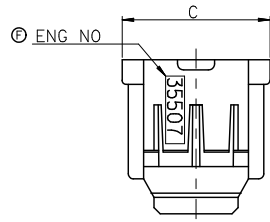
DIMENSION STYLE	
MM ONLY	
DRAWN BY	DATE
YSKIM02	1996/09/11
CHECKED BY	DATE
YSKIM04	1996/09/11
APPROVED BY	DATE
CWLEE	1996/09/12
MATERIAL NO.	SEE TABLE
SIZE	A3

SCALE	1:1	DESIGN UNITS	METRIC	THIRD ANGLE PROJECTION
TITLE 2.0 W-T-B CONN HOUSING 4-15P ONLY				
MOLEX INCORPORATED			SHEET NO. 1 OF 3	
DOCUMENT NO. SD-35507-001				

10 9 8 7 6 5 4 3 2 1

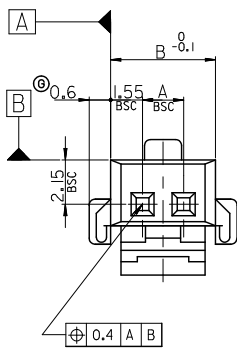


FOR 2 & 3 CKTS.



LEGEND

CKT NO.	**0**	COLOR	0 : NATURAL
			1 : BLACK
			2 : RED
			3 : YELLOW
			4 : BLUE
			5 : GREEN



NOTES

1. MATERIAL : POLYESTER, UL94V-0
2. FINISH : VARIABLE COLOR (SEE LEGEND)
3. PRODUCT SPECIFICATION NO : PS-35507-001
4. APPLICABLE TERMINAL : 50212-8000
5. MATES WITH : 35362-***|*, 35363-***|*

2.5	9.2	7.1	4	-030*	3
L7	7.2	5.1	2	35507-020*	2
D	C	B	A	ENG NO.	CKT

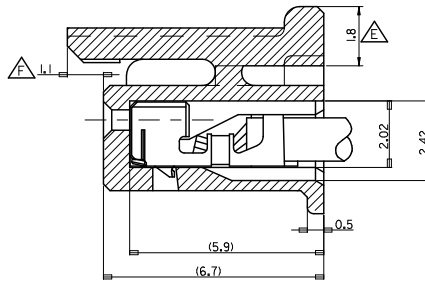
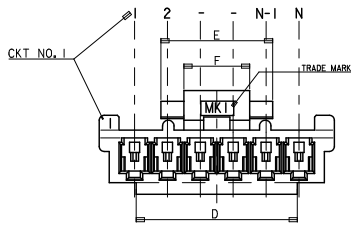
30 over	+0.3
10 over 30 under	±0.25
10 under	±0.2
ANGLE	±3°
GENERAL TOLERANCE	

REVISED	DESCRIPTION
REV 01	2009/12/18
REV 02	2009/12/18
REV 03	2009/12/21

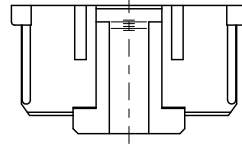
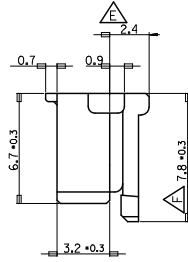
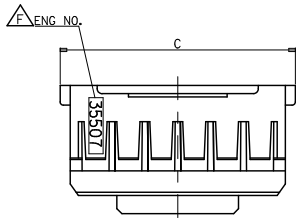
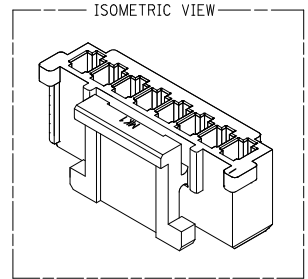
QUALITY SYMBOLS	GENERAL TOLERANCES (UNLESS SPECIFIED)	DIMENSION STYLE
$\nabla = 0$	mm INCH	MM ONLY
$\nabla = 0$	4 PLACES ± --- ± ---	DRAWN BY YSKIM02 DATE 1996/09/11
	3 PLACES ± --- ± ---	CHECKED BY YSKIM04 DATE 1996/09/11
	2 PLACES ± --- ± ---	APPROVED BY CWLEE DATE 1996/09/11
	1 PLACE ± --- ± ---	MATERIAL NO. SEE TABLE
	ANGULAR ± --- °	DOCUMENT NO. SD-35507-001
	DRAFT WHERE APPLICABLE MUST REMAIN WITHIN DIMENSIONS	SHEET NO. 2 OF 3

SCALE 1:1		DESIGN UNITS METRIC		THIRD ANGLE PROJECTION	
TITLE 2.0 W-T-B CONN HOUSING 2 TO 3P ONLY					
MOLEX INCORPORATED				SHEET NO. 2 OF 3	
THIS DRAWING CONTAINS INFORMATION THAT IS PROPRIETARY TO MOLEX INCORPORATED AND SHOULD NOT BE USED WITHOUT WRITTEN PERMISSION					

10 9 8 7 6 5 4 3 2 1



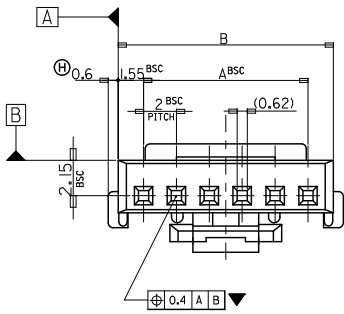
TERMINAL INSERTED DRAWING
SCALE: 8:1



NOTES

1. MATERIAL : POLYESTER, NON GLASS FILLED, UL94V-0
2. FINISH : VARIABLE COLOR (SEE LEGEND)
3. PRODUCT SPECIFICATION : PS-35507-001
4. APPLICABLE TERMINAL : 50212-8000
5. MATES WITH : 35362-***, 35363-***

LEGEND	
CKT. NO.	**0*
COLOR	<ul style="list-style-type: none"> 0 : NATURAL 1 : BLACK 2 : RED 3 : YELLOW 4 : BLUE 5 : GREEN



8.0	10.8	37.8	42.3	41.1	38	35507200*	35507-200*	20
8.0	10.8	35.8	40.3	39.1	36	35507190*	35507-190*	19
8.0	10.8	33.8	38.3	37.1	34	35507180*	35507-180*	18
8.0	10.8	31.8	36.3	35.1	32	35507170*	35507-170*	17
8.0	10.8	29.8	34.3	33.1	30	35507160*	35507-160*	16
F	E	D	C	B	A	MATERIAL NO.	ENG. NO.	CKT

REVISED IEC NO: KOR2008-0029 DRWN: HLED05 2009/12/18 CHYKSKIM APPR: YUNS.KKIM 2009/12/21	QUALITY SYMBOLS	GENERAL TOLERANCES (UNLESS SPECIFIED)	DIMENSION STYLE	SCALE	DESIGN UNITS	THIRD ANGLE PROJECTION
	▽=0 ▽=0	mm INCH 4 PLACES ± --- ± --- 3 PLACES ± --- ± --- 2 PLACES ± --- ± --- 1 PLACE ± --- ± --- ANGULAR ± --- °	MM ONLY	1:1	METRIC	THIRD ANGLE PROJECTION
	DRAFT WHERE APPLICABLE MUST REMAIN WITHIN DIMENSIONS	SEE TABLE	DRAWN BY: YSKIM02 CHECKED BY: YSKIM04 APPROVED BY: CWLEE DATE: 1996/09/11	TITLE: 2.0 W-T-B CONN HOUSING MOLEX INCORPORATED DOCUMENT NO. SD-35507-001 SHEET NO. 3 OF 3		