

PLEASE CHECK WWW.MOLEX.COM FOR LATEST PART INFORMATION

Part Number: [0022053121](#)
Status: **Active**
Description: 2.54mm (.100") Pitch KK® Solid Header, Right Angle, with Friction Lock, 12 Circuits, Tin (Sn) Plating

Documents:

[3D Model](#)
[Drawing \(PDF\)](#)

[Product Specification PS-10-07 \(PDF\)](#)
[RoHS Certificate of Compliance \(PDF\)](#)

Agency Certification

CSA LR19980
UL E29179

General

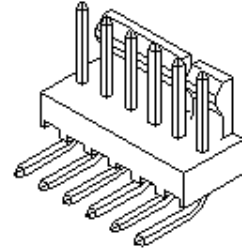
Product Family PCB Headers
Series [7478](#)
Application Wire-to-Board
Product Name KK®

Physical

Breakaway No
Circuits (Loaded) 12
Circuits (maximum) 12
Color - Resin Natural (White)
Durability (mating cycles max) 25
Flammability 94V-0
Glow-Wire Compliant No
Lock to Mating Part Yes
Material - Metal Brass
Material - Plating Mating Tin
Material - Plating Termination Tin
Material - Resin Nylon
Number of Rows 1
Orientation Right Angle
PC Tail Length (in) 0.141 In
PC Tail Length (mm) 3.58 mm
PCB Locator No
PCB Retention None
PCB Thickness Recommended (in) 0.062 In
PCB Thickness Recommended (mm) 1.60 mm
Packaging Type Bag
Pitch - Mating Interface (in) 0.100 In
Pitch - Mating Interface (mm) 2.54 mm
Plating min: Mating (µin) 200
Plating min: Mating (µm) 5
Plating min: Termination (µin) 200
Plating min: Termination (µm) 5
Polarized to Mating Part Yes
Polarized to PCB Yes
Shrouded Partial
Stackable Yes
Temperature Range - Operating 0°C to +75°C
Termination Interface: Style Through Hole

Electrical

Current - Maximum per Contact 4A



*Series
image - Reference only*

EU RoHS

**ELV and RoHS
Compliant**
REACH SVHC
Not Reviewed
**Halogen-Free
Status**

China RoHS



**Need more information on product
environmental compliance?**

Email productcompliance@molex.com
For a multiple part number RoHS Certificate of
Compliance, [click here](#)

Please visit the [Contact Us](#) section for any
non-product compliance questions.

Search Parts in this Series
[7478Series](#)

Mates With
[2695](#) , [6471](#) , [7880](#) , [4455](#) , [7720](#)

Voltage - Maximum	250V
-------------------	------

Solder Process Data

Duration at Max. Process Temperature (seconds)	5
Lead-free Process Capability	Wave Capable (TH only)
Max. Cycles at Max. Process Temperature	1
Process Temperature max. C	235

Material Info

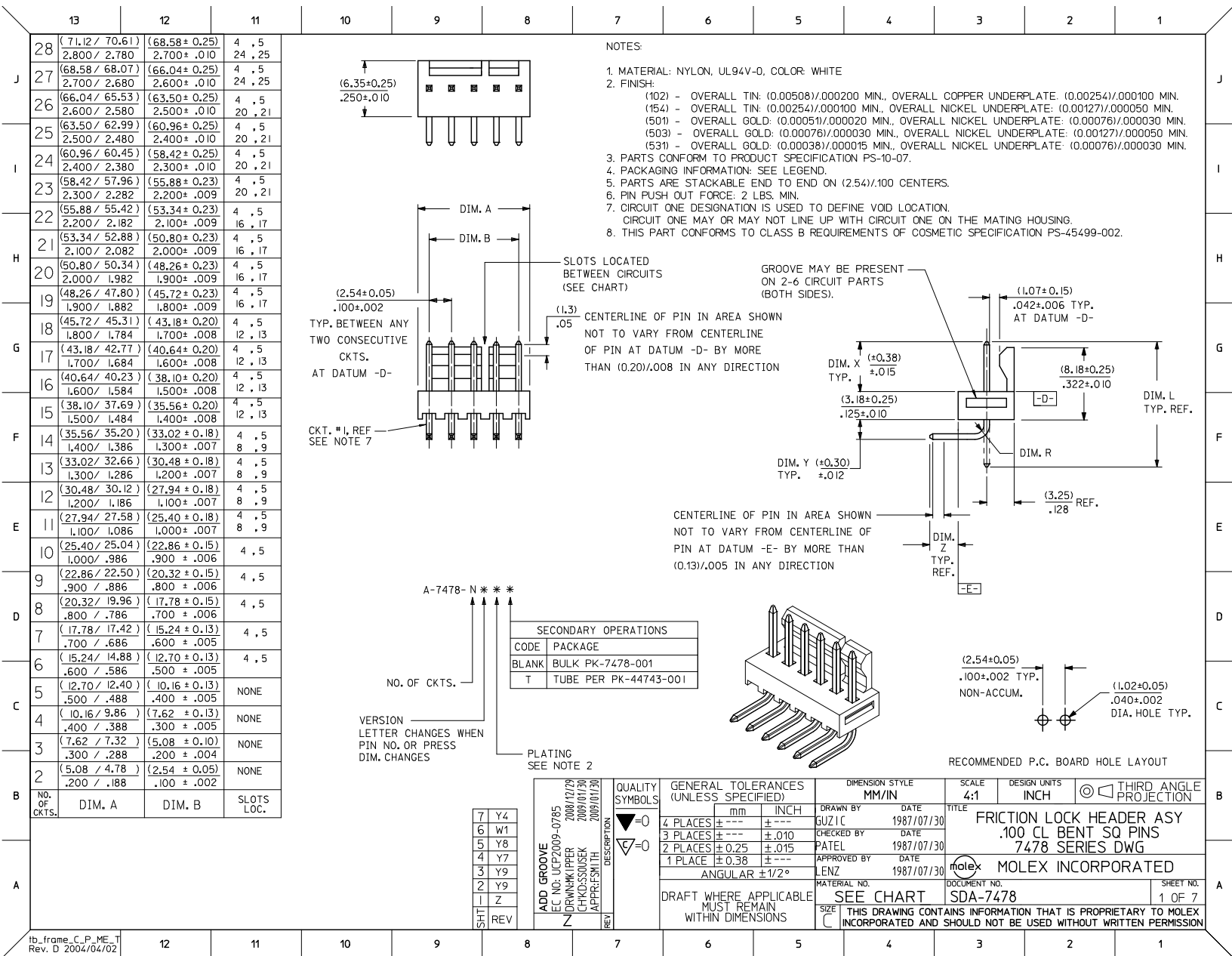
Old Part Number	A-7478-12A102
-----------------	---------------

Reference - Drawing Numbers

Product Specification	PS-10-07
Sales Drawing	SDA-7478

This document was generated on 04/09/2010

PLEASE CHECK WWW.MOLEX.COM FOR LATEST PART INFORMATION



	13	12	11	10	9	8	7	6	5	4	3	2	1	
	A-7478-NA102		A-7478-NA501		A-7478-NA501T		A-7478-NA102T							
J	PART NO.	ENG. NO.	PART NO.	ENG. NO.	PART NO.	ENG. NO.	PART NO.	ENG. NO.	PART NO.	ENG. NO.	PART NO.	ENG. NO.	J	
	22-05-3021	A-7478-2A102	22-12-2024	A-7478-2A501	50-29-1710	A-7478-2A501T	50-34-8500	A-7478-2A102T						
	22-05-3031	A-7478-3A102	22-12-2034	A-7478-3A501	50-29-1711	A-7478-3A501T	50-34-8501	A-7478-3A102T						
	22-05-3041	A-7478-4A102	22-12-2044	A-7478-4A501	50-29-1705	A-7478-4A501T	50-34-8502	A-7478-4A102T						
I	22-05-3051	A-7478-5A102	22-12-2054	A-7478-5A501	50-29-1712	A-7478-5A501T								
	22-05-3061	A-7478-6A102	22-12-2064	A-7478-6A501	50-29-1713	A-7478-6A501T								
	22-05-3071	A-7478-7A102	22-12-2074	A-7478-7A501	50-29-1714	A-7478-7A501T								
	22-05-3081	A-7478-8A102	22-12-2084	A-7478-8A501	50-29-1715	A-7478-8A501T								
	22-05-3091	A-7478-9A102	22-12-2094	A-7478-9A501	50-29-1716	A-7478-9A501T								
H	22-05-3101	A-7478-10A102	22-12-2104	A-7478-10A501	50-29-1717	A-7478-10A501T							H	
	22-05-3111	A-7478-11A102	22-12-2114	A-7478-11A501	50-29-1718	A-7478-11A501T								
	22-05-3121	A-7478-12A102	22-12-2124	A-7478-12A501	50-29-1719	A-7478-12A501T								
	22-05-3131	A-7478-13A102	22-12-2134	A-7478-13A501	50-29-1720	A-7478-13A501T								
	22-05-3141	A-7478-14A102	22-12-2144	A-7478-14A501	50-29-1721	A-7478-14A501T								
	22-05-3151	A-7478-15A102	22-12-2154	A-7478-15A501	50-29-1722	A-7478-15A501T								
G	22-05-3161	A-7478-16A102	22-12-2164	A-7478-16A501	50-29-1723	A-7478-16A501T							G	
	22-05-3171	A-7478-17A102	22-12-2174	A-7478-17A501	50-29-1724	A-7478-17A501T								
	22-05-3181	A-7478-18A102	22-12-2184	A-7478-18A501	50-29-1725	A-7478-18A501T								
	22-05-3191	A-7478-19A102	22-12-2194	A-7478-19A501	50-29-1726	A-7478-19A501T								
	22-05-3201	A-7478-20A102	22-12-2204	A-7478-20A501	50-29-1727	A-7478-20A501T								
F	22-05-3211	A-7478-21A102	22-12-2214	A-7478-21A501	50-29-1728	A-7478-21A501T							F	
	22-05-3221	A-7478-22A102	22-12-2224	A-7478-22A501	50-29-1729	A-7478-22A501T								
	22-05-3231	A-7478-23A102	22-12-2234	A-7478-23A501	50-29-1730	A-7478-23A501T								
	22-05-3241	A-7478-24A102	22-12-2244	A-7478-24A501	50-29-1731	A-7478-24A501T								
	22-05-3251	A-7478-25A102	22-12-2254	A-7478-25A501	50-29-1732	A-7478-25A501T								
	22-05-3261	A-7478-26A102	22-12-2264	A-7478-26A501	50-29-1733	A-7478-26A501T								
E	22-05-3271	A-7478-27A102	22-12-2274	A-7478-27A501	50-29-1734	A-7478-27A501T							E	
	22-05-3281	A-7478-28A102	22-12-2284	A-7478-28A501	50-29-1735	A-7478-28A501T								
D													D	
C													C	
B													B	
A													A	
<div><div><div><div><div>ADD PINS</div><div>EEC NO: UCP2006-1815</div><div>DRAWN BY: CHIKOSELHAG</div><div>APPROVED BY: Y9</div><div>2006/02/06</div><div>2006/02/06</div><div>2006/02/09</div></div><div>DESCRIPTION</div><div>REV</div></div><div><div>QUALITY SYMBOLS</div><div>▽=0</div><div>▽=0</div></div><div><div>GENERAL TOLERANCES (UNLESS SPECIFIED)</div><div><div><div>mm</div><div>INCH</div></div><div>4 PLACES ±--- ±---</div><div>3 PLACES ±--- ±---</div><div>2 PLACES ±--- ±---</div><div>1 PLACE ±--- ±---</div><div>ANGULAR ±----</div></div><div><div>DRAFT WHERE APPLICABLE</div><div>MUST REMAIN</div><div>WITHIN DIMENSIONS</div></div></div><div><div>DIMENSION STYLE</div><div>IN/MM</div><div><div>DRAWN BY</div><div>DATE</div></div><div><div>CHECKED BY</div><div>DATE</div></div><div><div>APPROVED BY</div><div>DATE</div></div><div><div>MATERIAL NO.</div><div>SDA-7478</div></div><div><div>DOCUMENT NO.</div><div>SHEET NO.</div></div></div><div><div>SCALE</div><div>---</div></div><div><div>DESIGN UNITS</div><div>INCH</div></div><div><div>THIRD ANGLE PROJECTION</div></div><div><div>FRICTION LOCK HEADER ASY</div><div>.100 CL BENT SQ PINS</div><div>7478 SERIES DWG.</div><div>MOLEX INCORPORATED</div></div><div><div>3 OF 7</div></div><div><div>THIS DRAWING CONTAINS INFORMATION THAT IS PROPRIETARY TO MOLEX INCORPORATED AND SHOULD NOT BE USED WITHOUT WRITTEN PERMISSION</div></div></div></div>														
1b_frame_C.P.M.E.T Rev. D 2004/04/02	12	11	10	9	8	7	6	5	4	3	2	1		